



**4<sup>th</sup> Malaysia Statistics Conference – MYSTATS 2016**  
**Sasana Kijang, Kuala Lumpur (15 Nov. 2016)**  
**“Strengthening Statistical Usage for Decisions and Innovation”**

**Session 1b(i): Usage of Statistics and Application of Statistical Science by Official Authorities**

# **THE WAY FORWARD FOR HEALTH STATISTICS IN MOH MALAYSIA**



# Outline

1. Statistics in MoH Malaysia
2. Malaysian Health Data Warehouse (MyHDW)
3. Geographic Information System (GIS)
4. Way Forward

# (I) STATISTICS IN MOH MALAYSIA

# I. Statistics in MoH Malaysia

“A nation working together  
for better health”

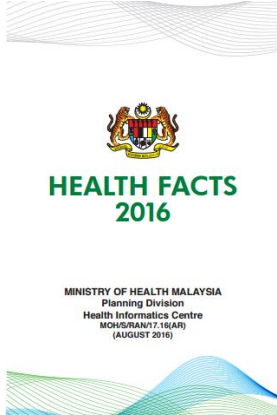
Enable evidence-based decision  
making and planning

## Role of MoH:

- as leading agency of health in Malaysia;
- provides leadership on matters relating to health;
- set direction for health care development in the country;
- lay the policy and the direction of health services in the country;
- enforce regulations and be the regulator.

## Role of Health Informatics Centre (HIC):

*planning and managing integrated health information system in MoH.*



HEALTH FACTS  
2016

MINISTRY OF HEALTH MALAYSIA  
Planning Division  
Health Informatics Centre  
MOH/S/IRAN/7.16(AIR)  
(AUGUST 2016)

Government		
Ministry of Health	NO.	OFFICIAL BEDS
Hospitals	143	41,389
- Hospitals	134	36,447
- Special Medical Institutions <sup>1</sup>	9	4,942

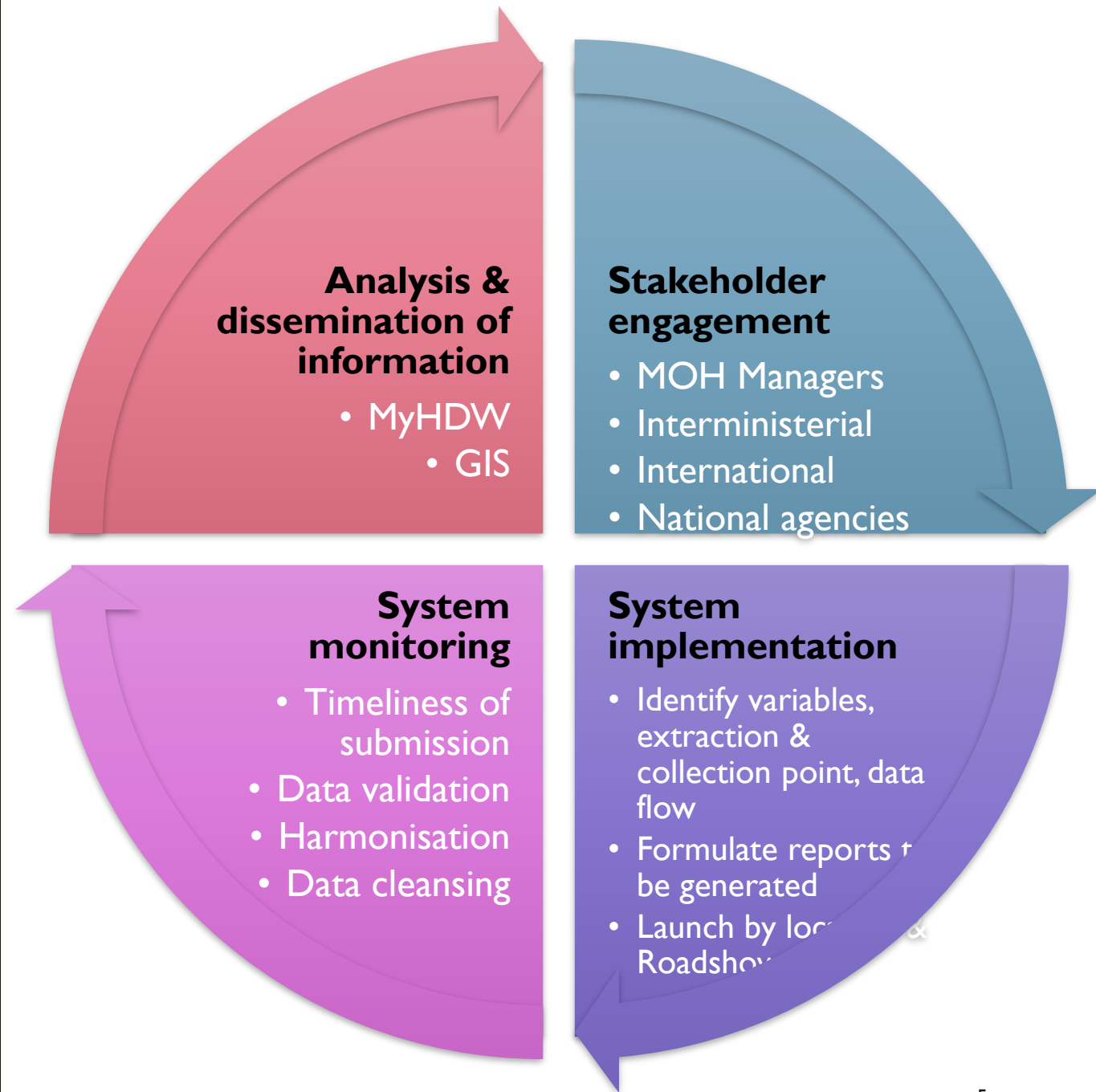
  

	NO.	TEAMS
Health Clinics		
- Health Clinics <sup>2</sup>	1,061	-
- Community Clinics (Klinik Desa)	1,808	-
- Mobile Health Clinics (Booms)	-	203
- Flying Doctor Services (Booms)	6	12

<sup>1</sup> Refers to one Rehabilitation Hospital, one Women & Children Hospital, one Leprosy, one Respiratory, one Cancer and four Psychiatric Institutions.  
<sup>2</sup> Health Clinics include Maternal & Child Health Clinics.

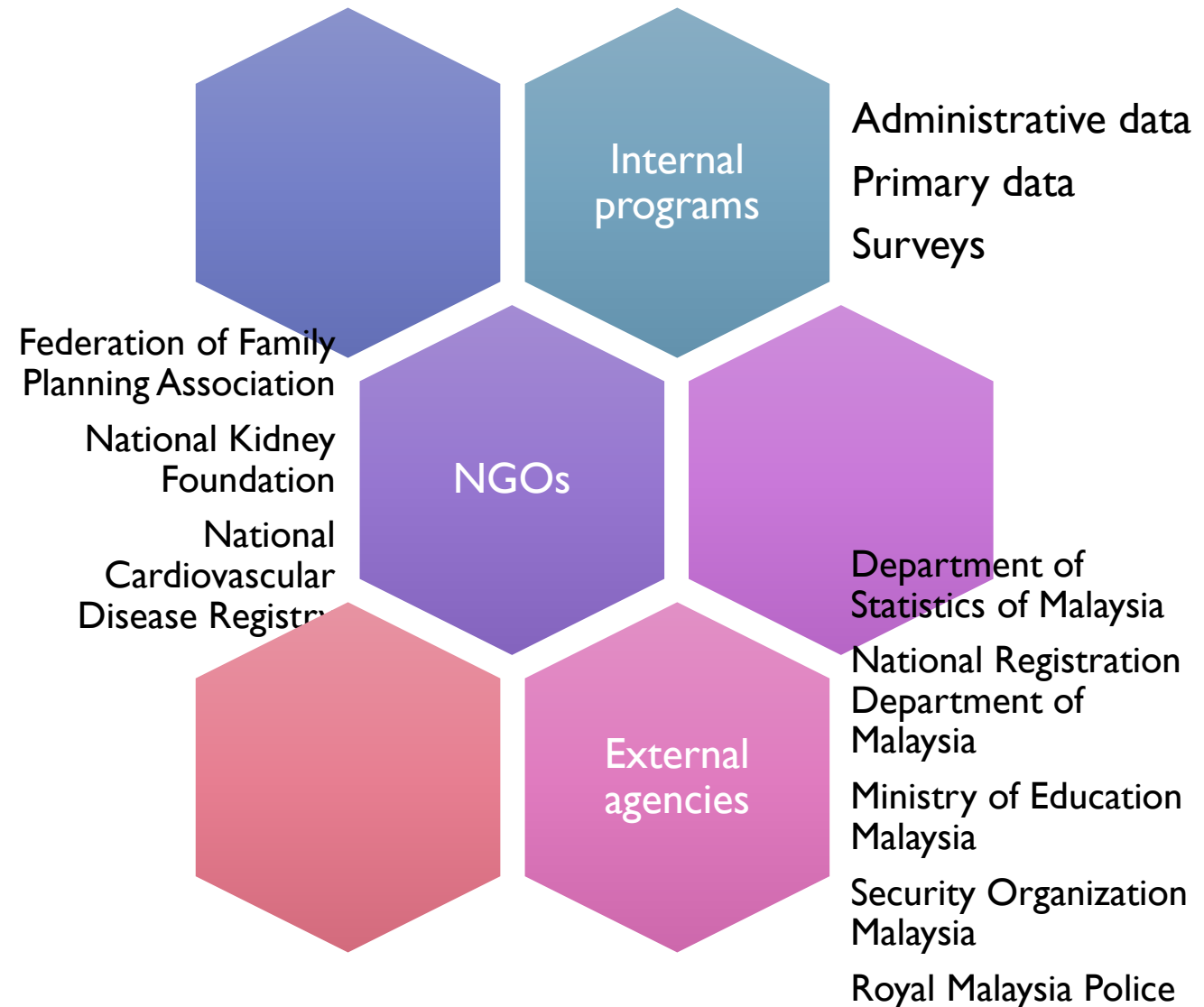
# Managing electronic Health Information Management Systems (HIMS)

A cycle



# Data sources in generating MoH Statistics

Engagement  
Collaboration  
Harmonisation



An iceberg floating in the ocean. The small tip above the water is labeled 'Structured data'. The much larger part of the iceberg submerged below the water is labeled 'Unstructured data'. Inside the submerged part, the following text is listed: 'Narrative text', 'Images (X-ray, CT, MRI)', 'Patterns (ECG)', and 'Audio'.

**Structured data**

**Unstructured data**

Narrative text  
Images (X-ray, CT, MRI)  
Patterns (ECG)  
Audio

Health Information  
Management  
Systems (HIMS)

Patient registries

Oral Health

Pharmaceutical

Rural  
Environmental and  
Sanitation

Food Safety  
Information  
System

Family Health and  
Family Planning

Communicable  
Disease Control  
Information  
System (e-Notis),

Blood Transfusion

Private Hospital

International Entry  
point

Health Facility

Non-MoH  
Hospital  
Information  
System

Health Human  
Resource

MORE

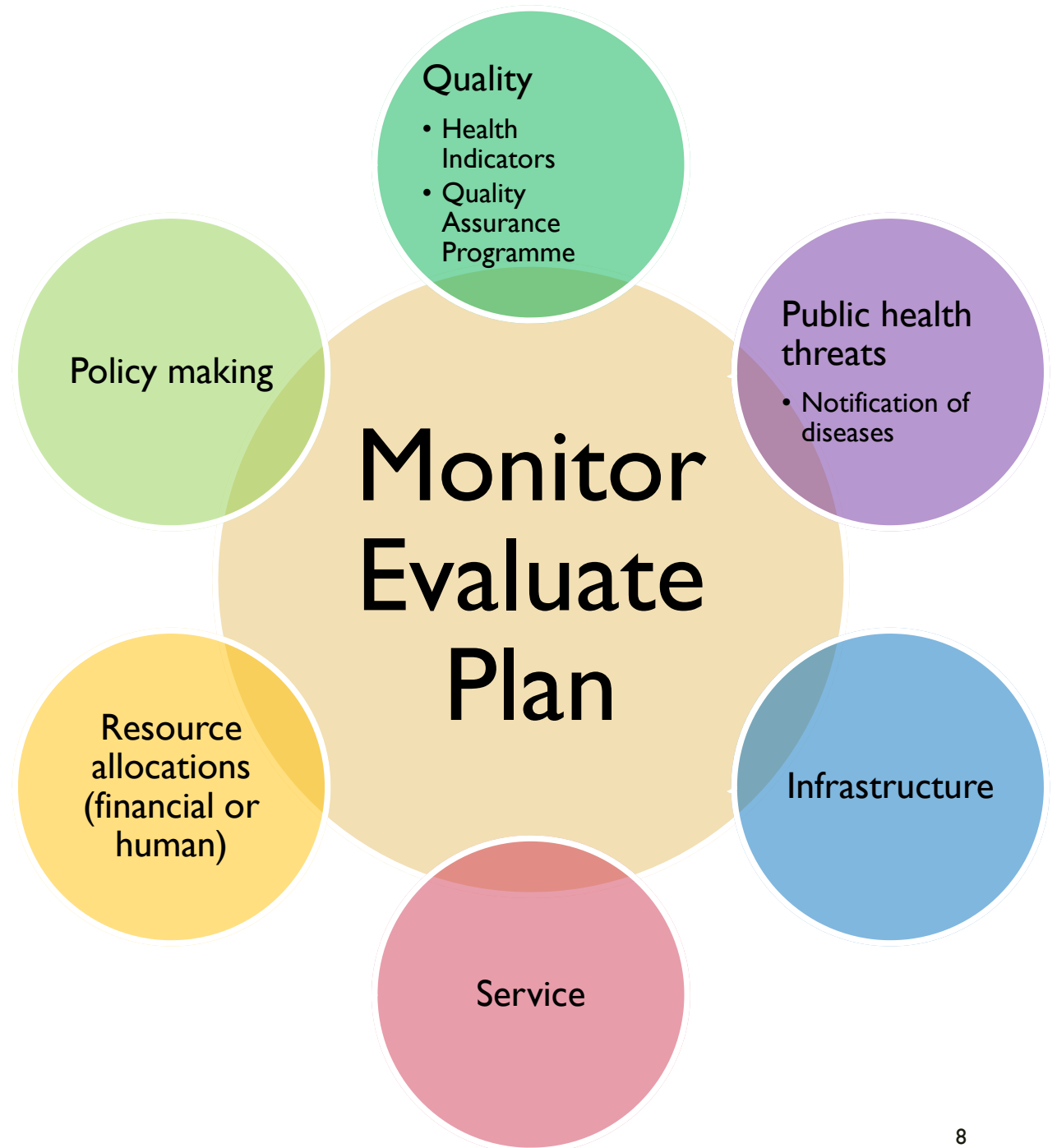
# Data and Information usage

Data

Information

Knowledge

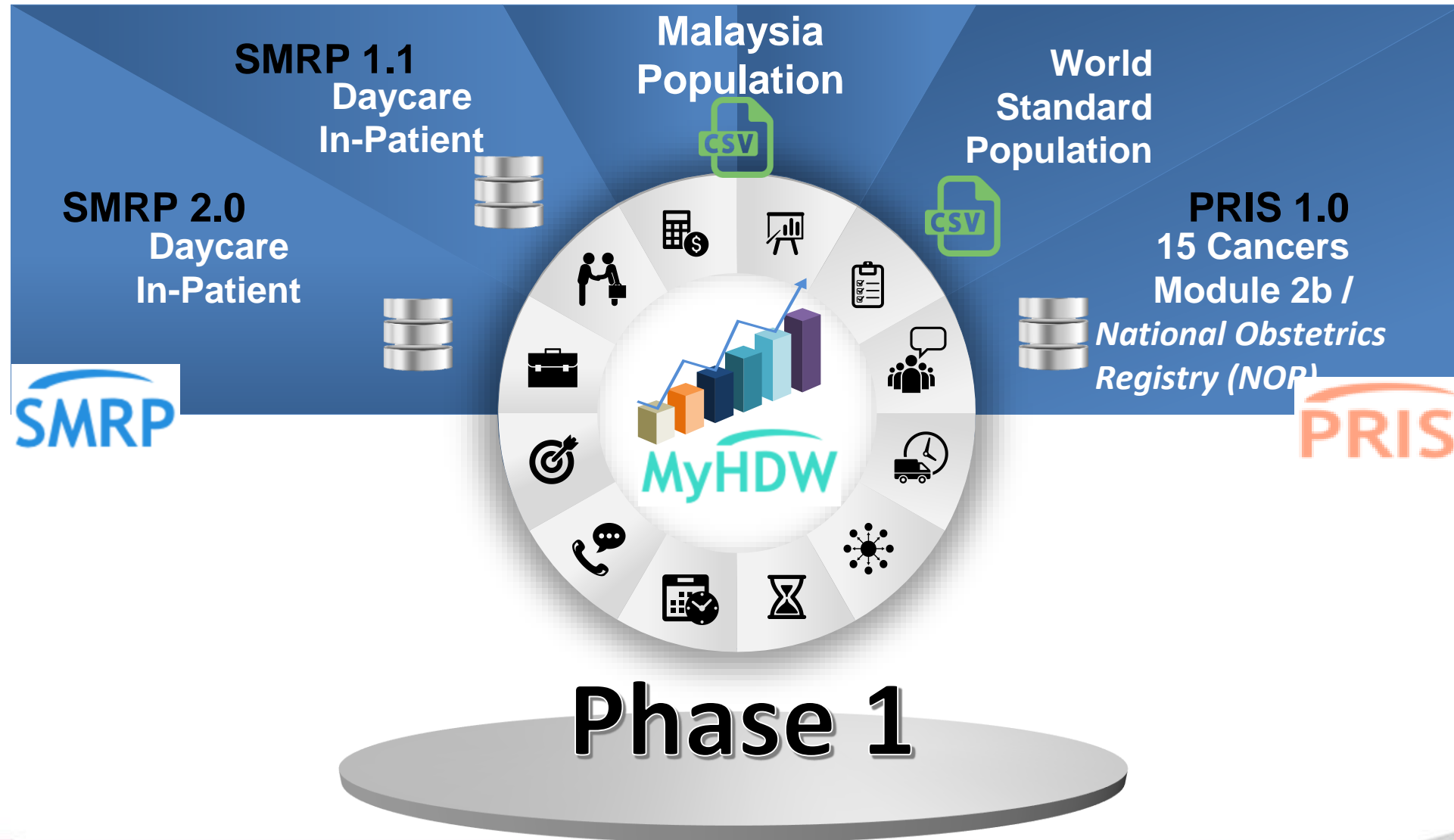
Wisdom





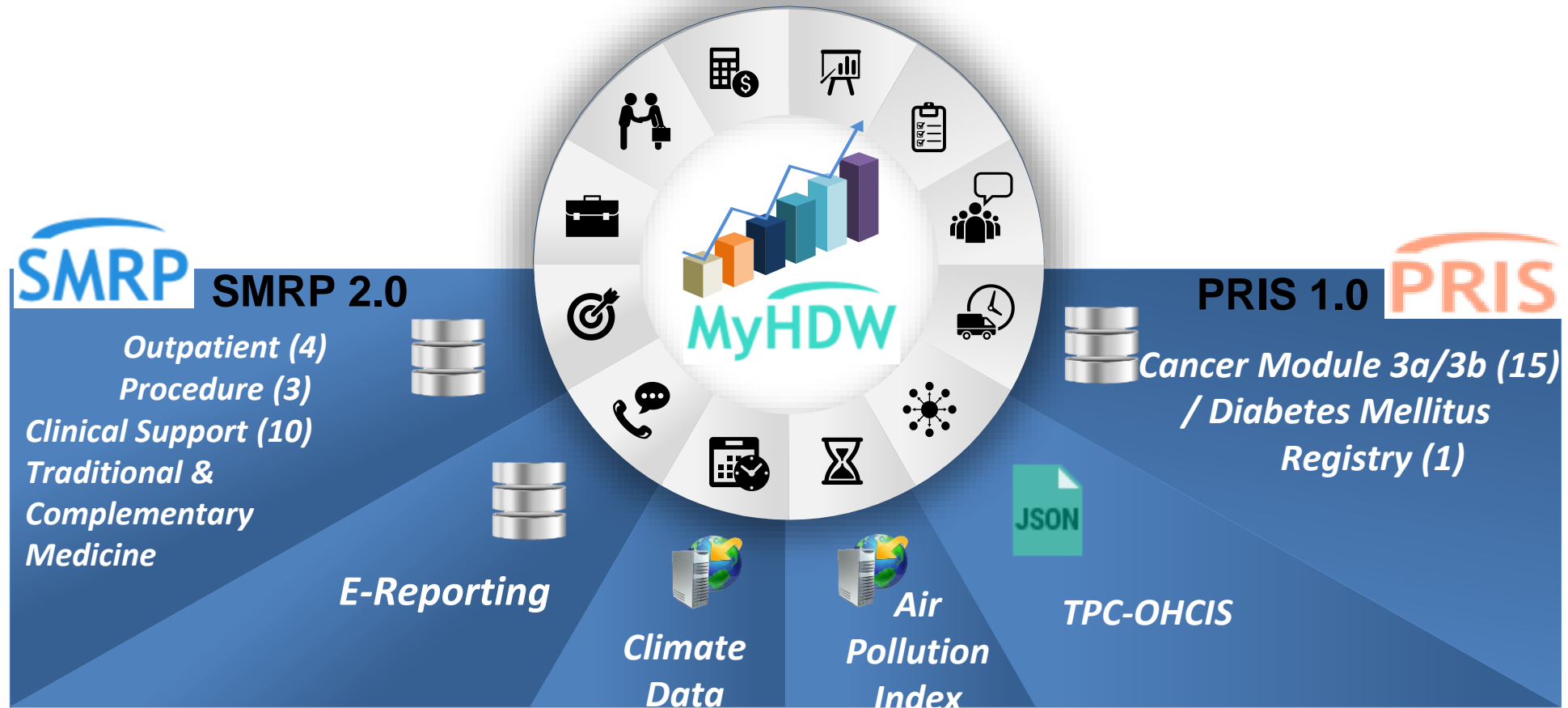
# (2) MALAYSIAN HEALTH DATA WAREHOUSE (MyHDW)

# MyHDW Phase 1 Data Source



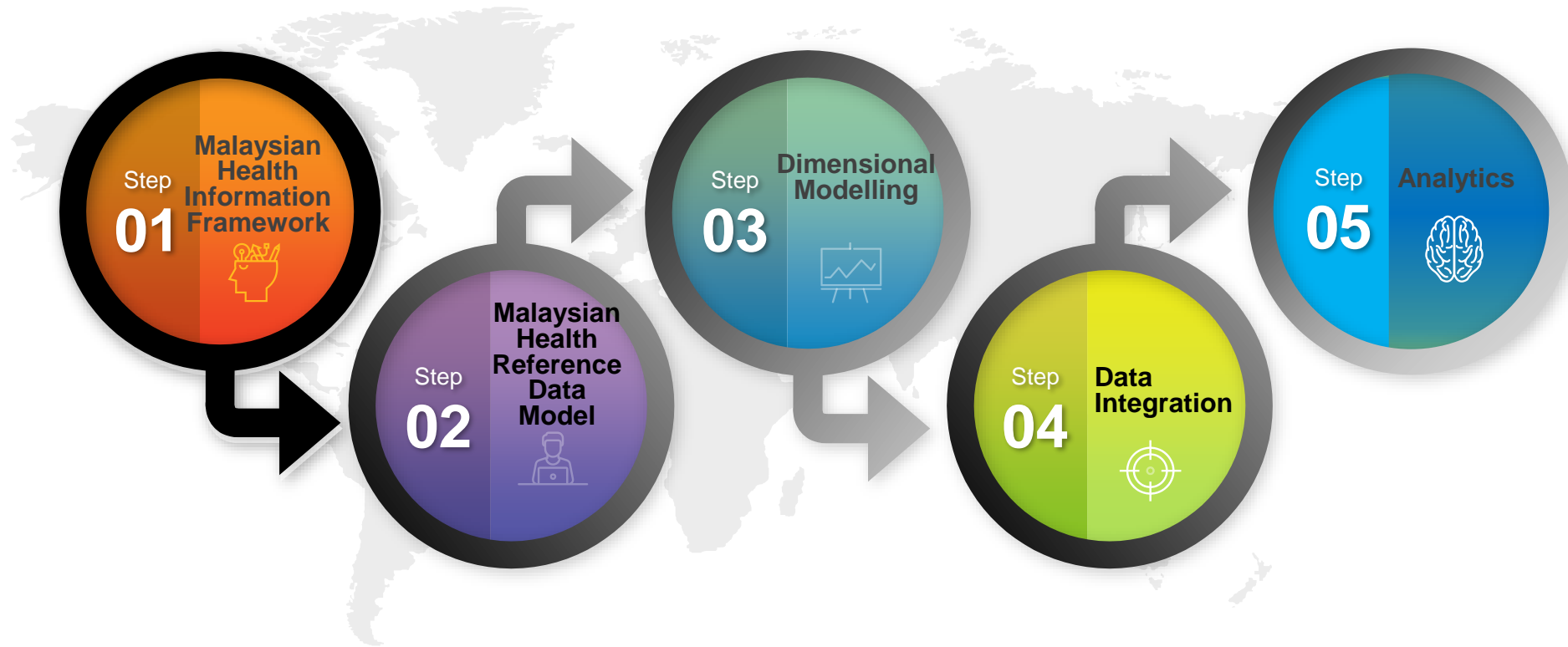
# MyHDW Phase 2 Data Source

## Phase 2

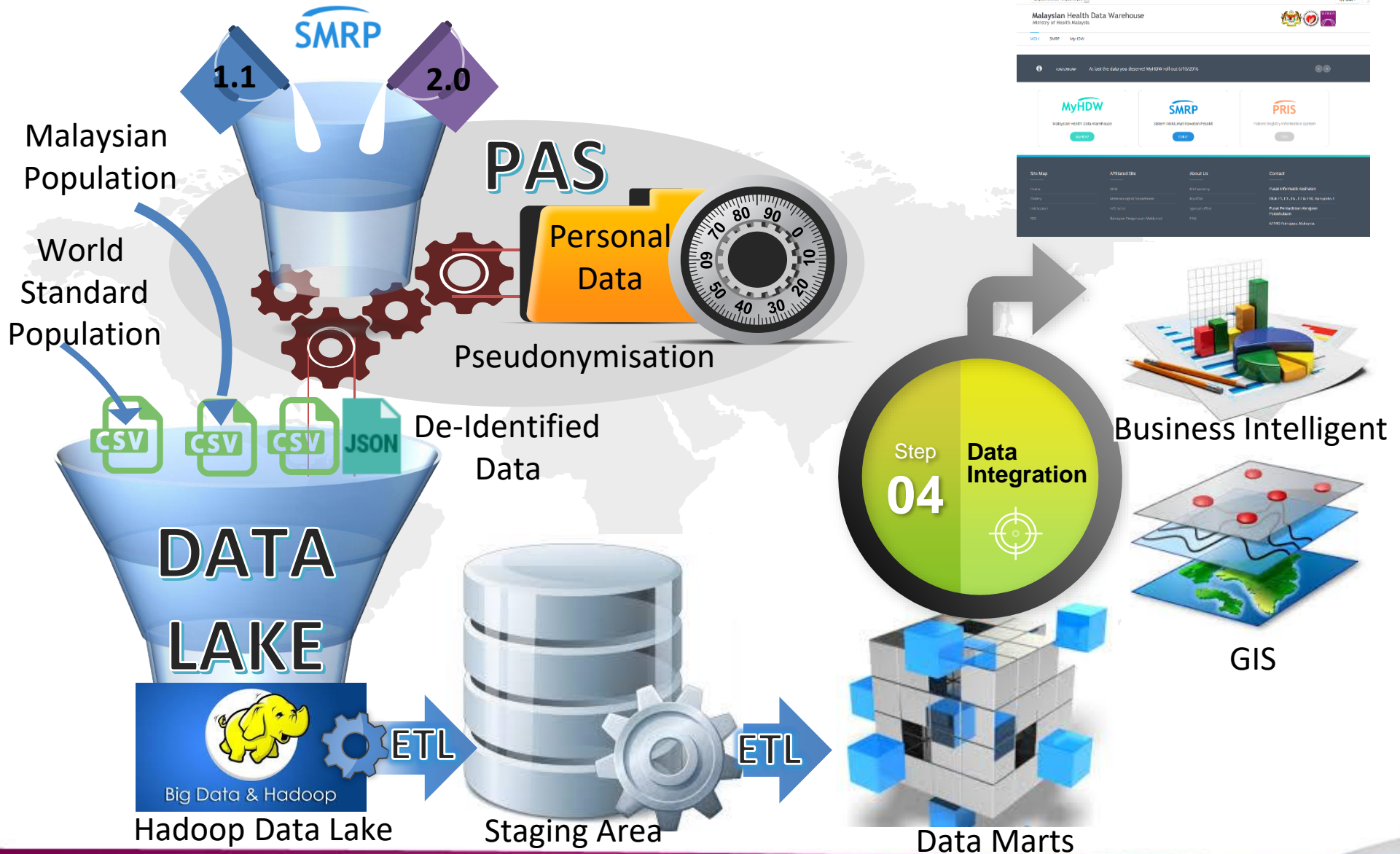




# MyHDW Methodology

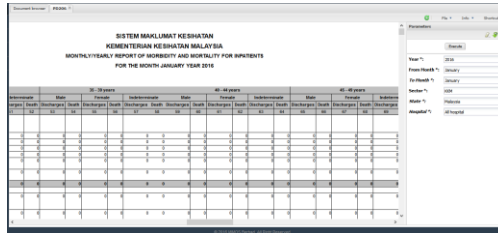


# MyHDW Data Integration

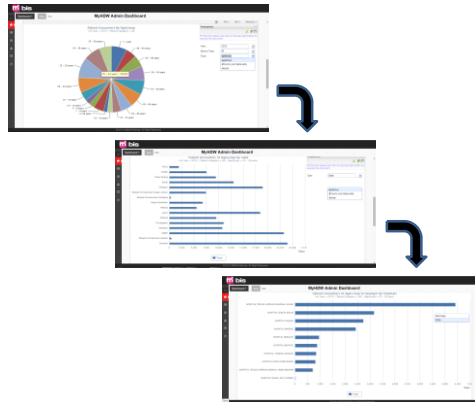




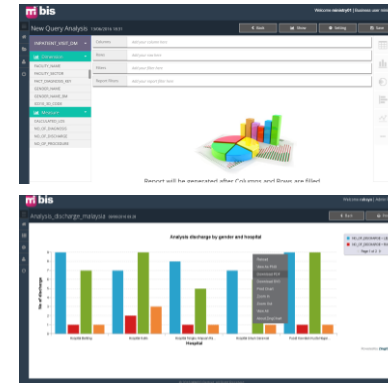
# MyHDW Analytics



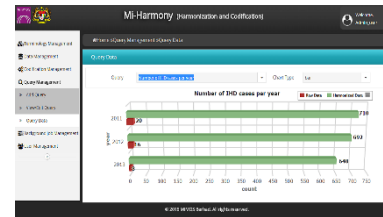
Fixed Format Report



Dashboard



Ad-hoc Query



Codification and Harmonisation



Statistical and Predictive Analytics





# The Value



01



Quality of the Data

- Source of truth
- Auto validation rules

02



Security

- 2 Factor Authentication, Access Control Matrix
- Data Anonymisation and De-Identification

03



Governance

- Data and Information Governance Committee

04



Independent KPI Generation

- Monitoring & Evaluation
- Evidence-based decision making and planning

05



Big Data Analytics

- Predictive Analysis
- Preserve the granularity of data sources

06



Comprehensive National Health Data

- Ready to provide information to external systems (without losing confidentiality) e.g. IARC
- Electronic reporting for Open Data

07



Timely

- Right Time – 24 Hours / Every Month
- Web Base

08



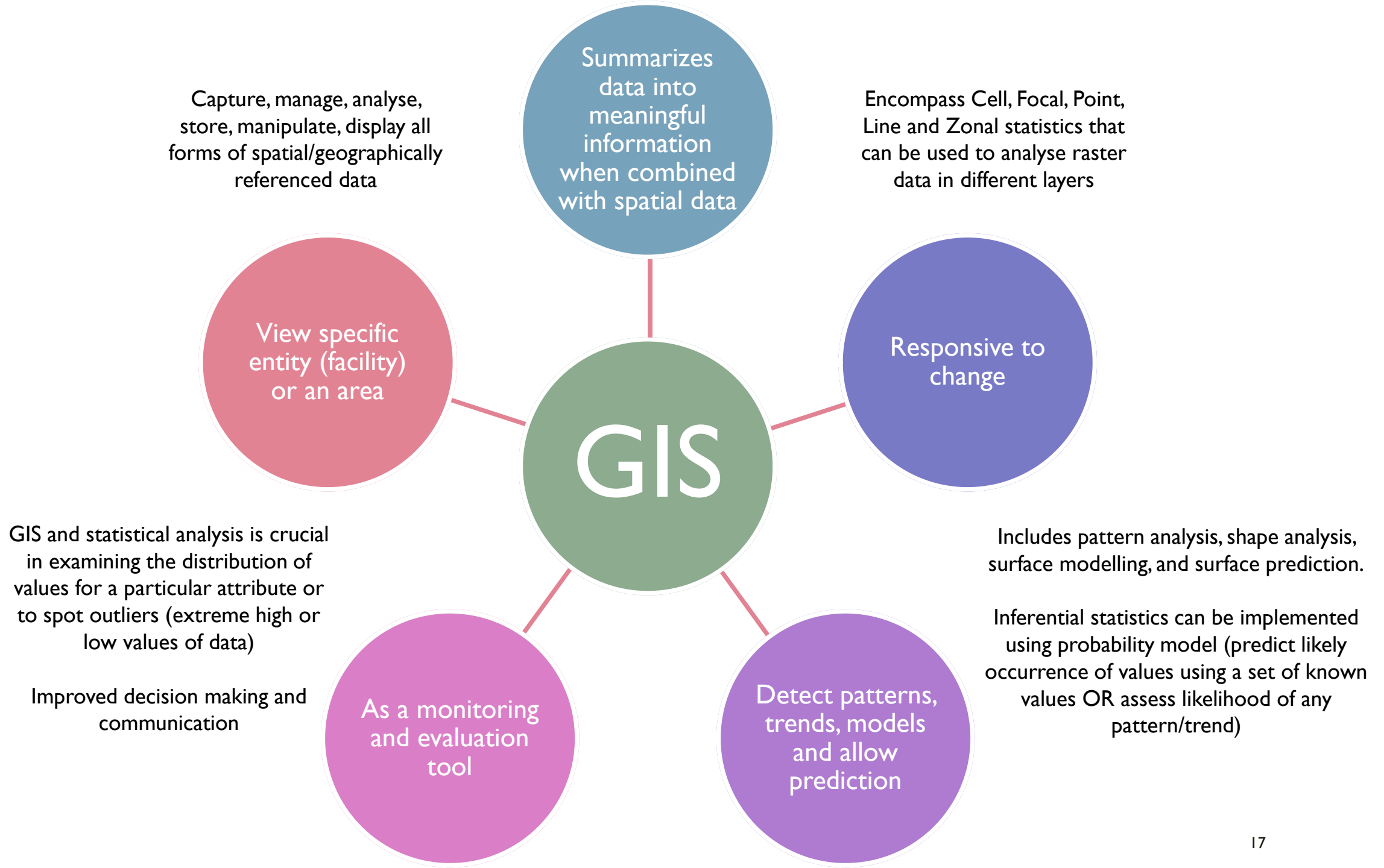
Cost Saving

- Centralised system
- Data co-related
- 1/3 savings on development cost

# (3) GEOGRAPHIC INFORMATION SYSTEM (GIS)

Within Malaysian Health Data Warehouse (MyHDW)





# (4) WAY FORWARD

# MoH Way Forward

## Near future:

Prepare/develop Environmental Data for medical research for Malaysian Meteorological Department (MetMalaysia) and Department of Environment Malaysia.



# Challenges

Real time vs. right time

Accuracy

Interoperability

Granular data

# Future possibilities

Sharing of data across government  
agencies

A comprehensive data warehouse  
with seamless information flow  
between different agencies

Build once, use many



# THANK YOU

**Dr. 'Ismat Mohd Sulaiman**  
Health Informatics Centre, Planning Division  
Ministry of Health Malaysia  
[drismat@moh.gov.my](mailto:drismat@moh.gov.my)  
<https://my.linkedin.com/in/drismatmd>

