



An
Phríomh-Oifig
Staidrimh

Central
Statistics
Office

Forum Session of Malaysia Statistics Conference 2021

Dr. Kevin McCormack

20 October 2021



An
Phríomh-Oifig
Staidrimh

Central
Statistics
Office

First Session (1):

Experiences and challenges
faced in the early stage
during the movement
restrictions required to break
the COVID-19 chain?

First Lock Down – March to September 2020

- The government shut all schools, colleges, childcare facilities and cultural institutions.
- All large gatherings were cancelled, including St Patrick's Day festivities. almost all businesses, venues and amenities were shut.
- The first stay-at-home order banned all non-essential travel and contact with other people.
- The elderly and those with certain illnesses were told to cocoon.
- People were made to keep apart in public.
- The government passed an emergency act giving the state power to detain people, restrict travel and keep people in their homes to control the virus's spread..



Second Lock Down – December 2020 to May 2021

- There was another surge in late December 2020 and on Christmas Eve, another statewide lockdown was imposed.
- Vaccinations began on 29 December 2020.
- In February 2021, the government imposed testing and quarantine rules on all incoming travelers for the first time.
- Schools re-opened in March.
- The lockdown began to be gradually lifted from May, although indoor hospitality remained shut.
- In July and indoor hospitality reopened under strict guidelines, while vaccinations ramped up.

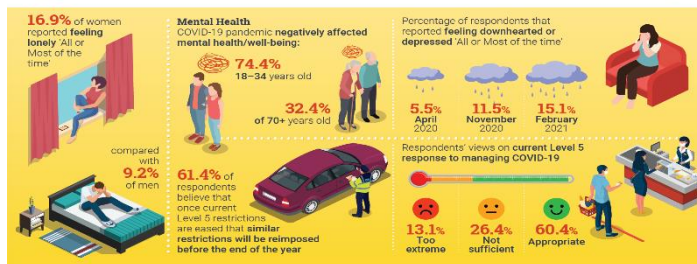


CSO – Pulse Surveys



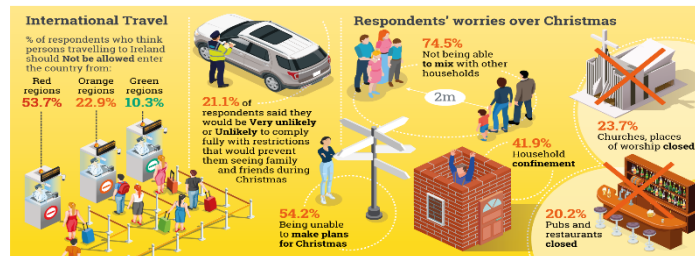
Central Statistics Office

Social Impact of COVID-19 Survey February 2021 Well-being



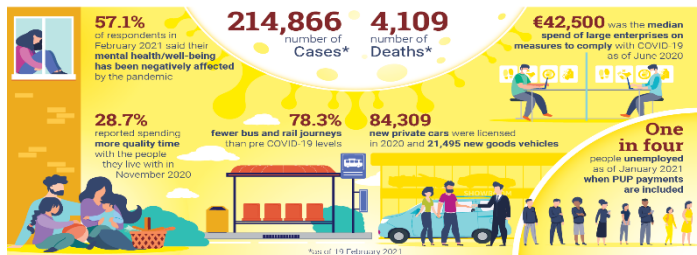
Central Statistics Office

Social Impact of COVID-19 Survey November 2020 Perceptions and Expectations around Christmas and International Travel



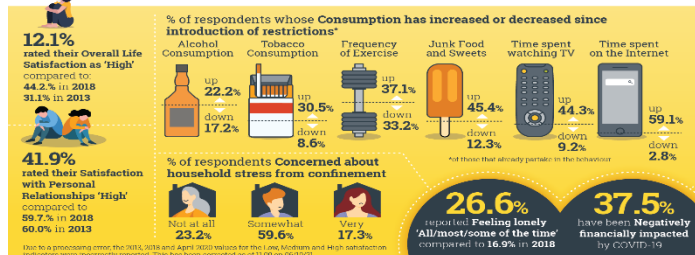
Central Statistics Office

COVID-19: One Year On



Central Statistics Office

Social Impact of COVID-19 Survey April 2020



www.cso.ie



**An
Phríomh-Oifig
Staidrimh**

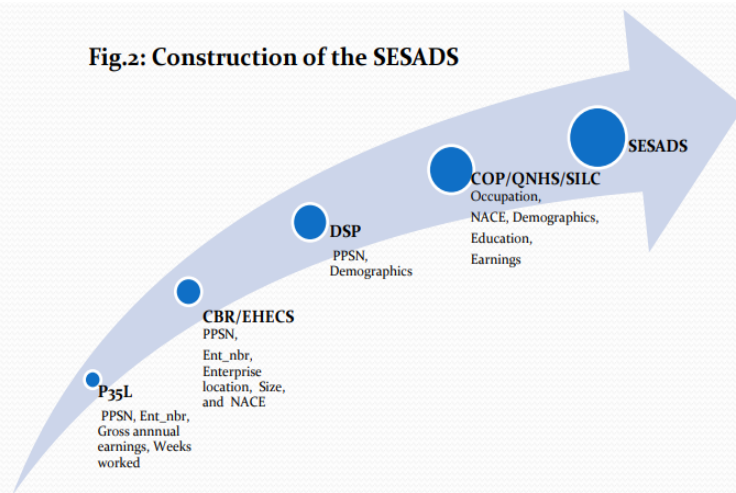
Central
Statistics
Office

SECOND SESSION (2)

Some agencies/ researchers have chosen administrative data as an alternative/ proxy indicator to data that was not available during the MCO.

Structure of Earnings Survey – Administrative Data Project - 2017

Fig.2: Construction of the SESADS



Unique Identifiers:

- PPS No. (Personal Public Service No.) - employees
- Ent_nbr (Enterprise Number) - employers

SESADS contains for all employees in the Ireland, Gross Annual/Weekly Earnings classified by:

NACE, Gender, Enterprise Size group, Public/Private sector, Weeks worked, Occupation, Area of residence, Education, Age, Nationality.



Surveys delayed and data collection mode change

Delayed

- Census – 2021
- Household Budget Survey – 2020/21

Mode change to exclusively phone interview

- Labour Force Survey



Labour Market Insight Bulletin -Q2 2021



Central
Statistics
Office

Impact of Selected COVID-19 Income Supports on Employees

Insights from Real Time Administrative Sources - Series 1

This bulletin is part of a series of outputs designed to provide high-level supplementary labour market analysis to users alongside the standard labour market outputs and metrics.

The data used is sourced from administrative datasets, namely Revenue's employee level tax data. This bulletin is specifically designed to complement the standard Earnings & Labour Costs (ELC) results for Q2 2021.

