

### KEY HIGHLIGHTS

- The **unemployment rate spiked to 5.0 per cent** as the unemployed persons went up 48.8 per cent as compared to a year ago to 778.8 thousand persons. The closure of operations for most of businesses during Movement Control Order (MCO) which has been extended to April 2020 has impacted loss of employment and jobseekers could hardly find jobs.
- The **working population decreased 156.4 thousand persons (-1.0%) year on year to 14.93 million persons**. The most affected employed persons were in the Manufacturing and Services sectors namely accommodation and food & beverage; arts, entertainment & recreation and other services such as beauty centres and salons.
- **Own account workers accounted for 2.59 million persons** largely comprised of traders/ small traders (farmer's market/ night markets/ caterings/ stalls/ freelancers) smallholders, tour operators including umrah & tour operators and others. These group of workers were exposed to the risk of job and income losses following the MCO.
- The **number of labour force in April 2020 recorded a marginal growth of 0.6 per cent** (+99.1 thousand persons) to 15.71 million persons, the lowest growth since September 2014. Month-on-month comparison, the number of labour force decreased 0.8 per cent (-130.7 thousand persons) as against March 2020.
- Thus, the **labour force participation rate (LFPR) in April 2020 declined 0.5 percentage points to 68.1 per cent**. The last time Malaysia posted LFPR at 68.1 per cent was in December 2017.
- **Outside labour force increased by 160.7 thousand persons (2.2%)** to 7.35 million persons as compared to the same month of the previous year. Reasons of being outside of labour force were mainly due to housework/ family responsibilities (43.3%) and schooling (40.2%).
- MCO has affected 4.87 million employed persons who were not working in April 2020. However, this group of people was not categorised as unemployed as they have work to return to.

- It is expected that the labor market position will continue to be effected in May 2020. In line with the measures taken by the Government including the implementation of the Conditional MCO (CMCO) and the implementation of the Pakej Rangsangan Ekonomi Prihatin Rakyat (PRIHATIN) and Pelan Jana Semula Ekonomi Negara (PENJANA), it is expected that business operations and the labour market gradually recover starting June 2020.

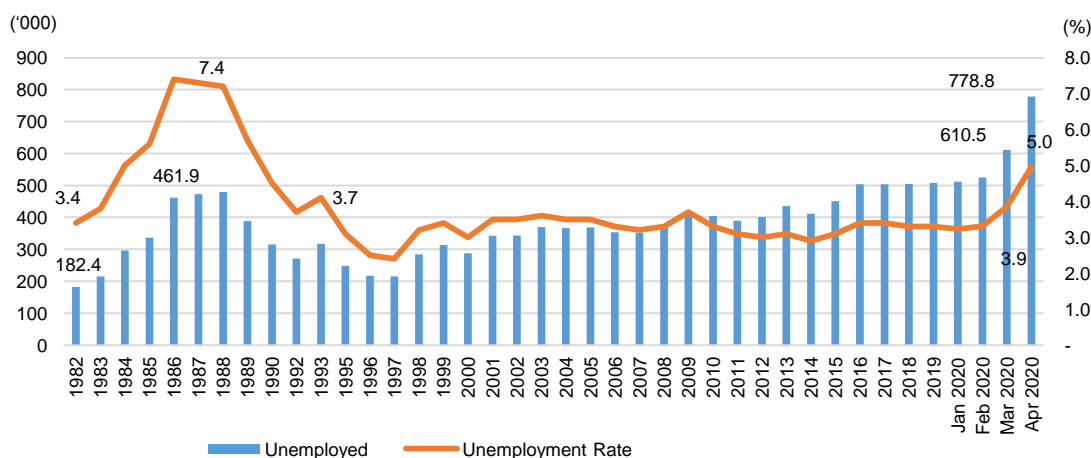
## IMPACT OF COVID-19 CONTINUES TO PRESSURE THE LABOUR MARKET IN APRIL 2020

### Unemployment spiked

The **unemployment rate spiked to 5.0 per cent** (March 2020: 3.9%) as the unemployed persons went up 48.8 per cent as compared to a year ago to 778.8 thousand persons. The closure of operations for most of businesses during MCO which has been extended to April 2020 has impacted loss of employment and jobseekers could hardly find jobs. (**Chart 1**)

The **inactive unemployed** increased 161.2 thousand persons (102.2%) year on year to 319.0 thousand persons in April 2020 as they believed there were no jobs available in the market. In addition, the **actively unemployed** for less than three months rose significantly by 57.2 per cent (+85.8 thousand persons) to 235.9 thousand persons as compared to the same month of previous year.

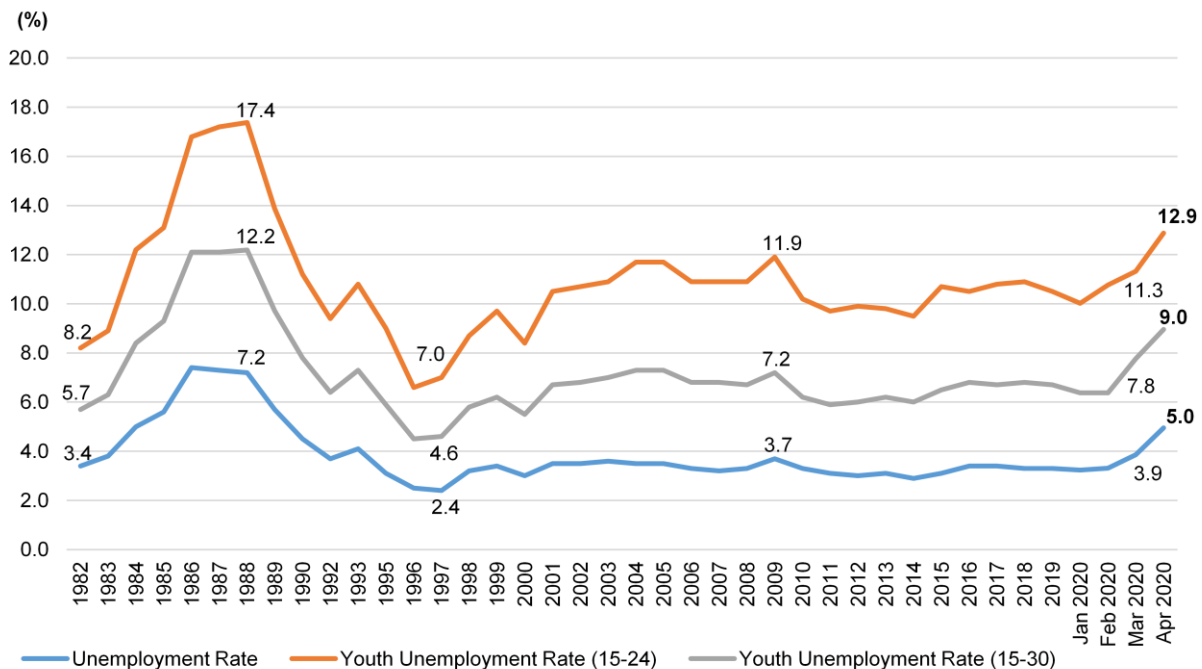
**Chart 1: Unemployment, Malaysia, 1982-2019 and January-April 2020**



From the perspective of age group, the **adult unemployment rate for aged 25 years and over**, increased by 1.0 percentage points from 2.4 per cent (March 2020) to 3.4 per cent in April 2020. Similarly, the **unemployment rate for adult aged 31 years and over** stepped up from 1.5 per cent to 2.5 per cent during the same period.

As for **youth unemployment rate aged 15 to 24 years**, increased to 12.9 per cent in April 2020 (March 2020: 11.3%) while the **unemployment rate for youth aged 15 to 30 years** recorded an increase from 7.8 per cent (March 2020) to 9.0 per cent in April 2020. **(Chart 2)**

**Chart 2: Youth unemployment rate, Malaysia, 1982-2019 and January-April 2020**



MCO has affected 4.87 million employed persons who were not working in April 2020. However, this group of people was not categorised as unemployed as they have work to return to. If this number is adjusted as unemployed, the unemployment rate for April 2020 would be much higher.

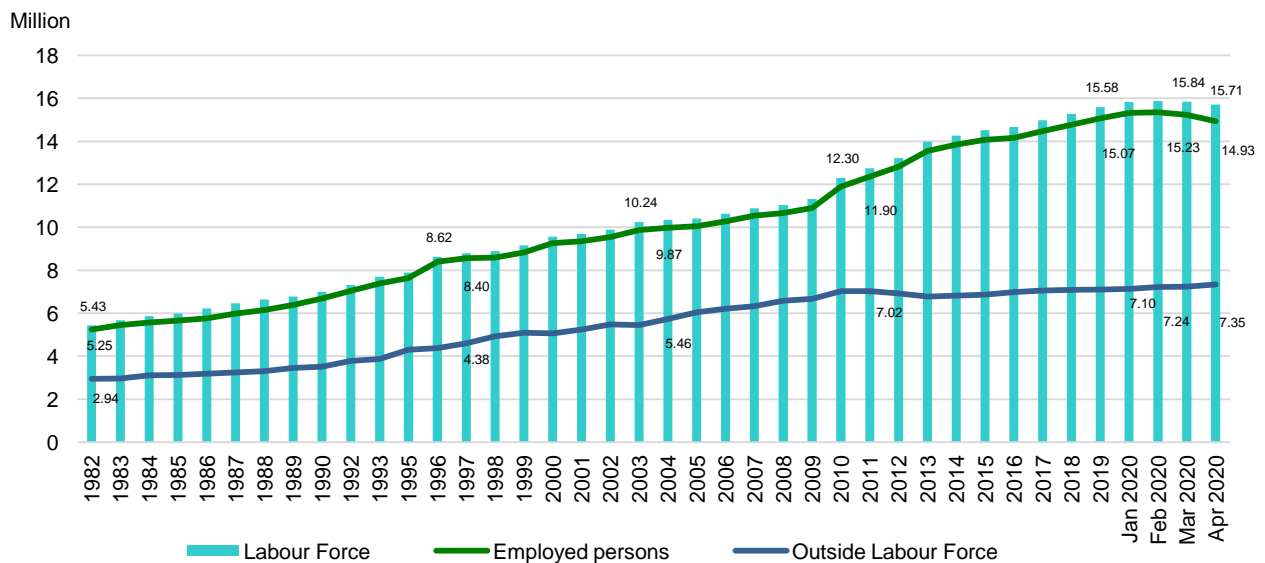
To recap the series of Malaysia’s unemployment rate since 1982, the highest rate was recorded at 7.4 per cent in 1986 following the economic downturn during the year. In terms of number, the unemployed persons in 1986 was 461.9 thousand persons.

### Unprecedented drop in working population

The number of working population starting to decrease since March 2020 as MCO Phase 1 took effect on March 18, 2020. Labour demand statistics in first quarter of 2020 has indicated initial signal of softer labour demand with slower growth of filled jobs and decreased in jobs vacancies. Prolonged MCO until April 2020 has made it hard for businesses to sustain and subsequently impacted the labour market.

In April 2020, the **working population decreased 156.4 thousand persons (-1.0%) year on year to 14.93 million persons**. The most affected employed persons were in the Manufacturing and Services sectors namely accommodation and food & beverage; arts, entertainment & recreation and other services such as beauty centres and salons. Month-on-month, the number of working population decreased 299.0 thousand (-2.0%) as compared to previous month (March 2020: 15.23 million persons). **(Chart 3)**

**Chart 3: Labour force, employed persons and outside labour force, Malaysia, 1982-2019 and January-April 2020**



Realising the negative effect of MCO to the Malaysia’s businesses and labour market, the Government has taken initiatives to implement Prihatin Rakyat Economic Stimulus Package (PRIHATIN). According to the Ministry of Finance, as at April 30, 2020, under Wage Subsidy Program, a total of 235,658 employers was approved with allocation of RM1.932 billion. This has positively impacted the labour market in retaining 1.703 million workers. As at June 5, 2020, number of employees who will benefit from this programme increased further to 2.3 million persons with an approved allocation of RM4.0 billion to 293,033 employers.

**As for own account workers, there were 2.59 million persons in April 2020.** These group of workers which largely comprised of traders/ small traders (farmer’s market/ night markets/ caterings/ freelancers), were exposed to the risk of job and income losses following the MCO. Special PRIHATIN Grant (SPG) of RM3,000 has been introduced by the Government in May 2020 to assist Small Medium Enterprise (SMEs) with their cash flow. This programme is expected to benefit nearly 700,000 SMEs which also consist of own account workers.

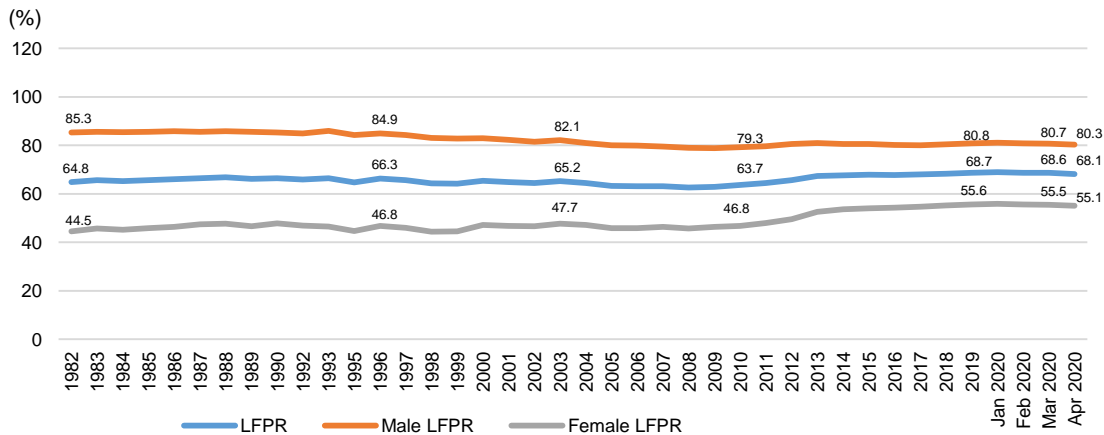
## Labour force participation rate declined

The number of labour force in April 2020 recorded a marginal growth of **0.6 per cent** (+99.1 thousand persons) to 15.71 million persons, the lowest growth since September 2014. Month-on-month, the number of labour force decreased 0.8 per cent (-130.7 thousand persons) as against March 2020.

Thus, the **labour force participation rate (LFPR) in April 2020 declined 0.5 percentage points to 68.1 per cent**. The decrease of LFPR during the month was due to outflows from labour force to being out of the labour force. The last time Malaysia posted LFPR at 68.1 per cent was in December 2017.

In average, male LFPR was always above 80.0 per cent. In April 2020, male LFPR was 80.3 per cent, decreased 0.4 percentage points as against March 2020 (80.7%). Likewise, female LFPR also posted a decline of 0.4 percentage points to 55.1 per cent (March 2020: 55.5%). **(Chart 4)**

**Chart 4: Labour force participation rate by sex, Malaysia, 1982-2019 and January-April 2020**



## Number of outside labour force growing

In April 2020, **outside labour force posted inflows of 160.7 thousand persons (2.2%) to 7.35 million persons** as compared to the same month of the previous year. It was observed that reasons of being outside of labour force due to housework/ family responsibilities (43.3%) was increased during the month. The reasons of schooling was the second highest at 40.2 per cent. **(Chart 3)**

## LOOKING AHEAD

Malaysia's labour market in May 2020 is expected to be further affected following the Conditional MCO (CMCO) starting May 5, 2020 as businesses were still not fully in operation. During this period, companies will have the tendency to reduce the size of their employees to ease the burden of the operating costs following declined in their business revenue. Recovery MCO (RMCO) which was kicked off on June 10, 2020 has allowed more businesses to operate and logistics movement. This situation will spur businesses and steer the improvement of job market, especially in the travel and tourism related industries.

**Jadual 1a: Indikator Utama Tenaga Buruh, Malaysia, Januari 2010 - April 2020**

*Table 1a: Time Series Principal Indicator of Labour Force, Malaysia, January 2010 - April 2020*

Tahun Year	Bulan Month	Tenaga Buruh Labour Force (‘000)	Bekerja Employed (‘000)	Penganggur Unemployed (‘000)	Luar Tenaga Buruh Outside Labour Force (‘000)	Kadar Penyertaan Tenaga Buruh Labour Force Participation (%)	Kadar Pengangguran Unemployment Rate (%)
2010	Jan.	12,367.9	11,931.2	436.7	6,927.5	64.1	3.5
	Feb.	12,059.8	11,632.3	427.4	7,225.1	62.5	3.5
	Mac	12,324.2	11,895.9	428.3	6,993.0	63.8	3.5
	Apr.	12,512.0	12,133.5	378.5	6,894.5	64.5	3.0
	Mei	12,197.6	11,798.9	398.7	7,186.0	62.9	3.3
	Jun	12,331.8	11,882.2	449.6	7,065.0	63.6	3.6
	Jul.	12,516.2	12,099.5	416.7	6,900.5	64.5	3.3
	Ogos	12,320.9	11,936.5	384.3	7,157.9	63.3	3.1
	Sept.	12,289.9	11,912.1	377.8	7,194.4	63.1	3.1
	Okt.	12,689.5	12,342.6	346.8	6,846.7	65.0	2.7
	Nov.	12,277.5	11,874.1	403.4	7,298.3	62.7	3.3
	Dis.	12,822.3	12,418.3	404.1	6,722.3	65.6	3.2
2011	Jan.	12,804.2	12,376.0	428.2	6,881.6	65.0	3.3
	Feb.	12,618.9	12,245.3	373.6	7,110.3	64.0	3.0
	Mac	12,862.2	12,491.8	370.4	6,940.1	65.0	2.9
	Apr.	12,921.7	12,537.1	384.6	6,930.6	65.1	3.0
	Mei	12,726.6	12,330.3	396.3	7,133.2	64.1	3.1
	Jun	12,782.7	12,372.6	410.1	7,073.7	64.4	3.2
	Jul.	12,967.4	12,581.5	385.9	6,920.5	65.2	3.0
	Ogos	12,887.9	12,486.7	401.2	7,038.6	64.7	3.1
	Sept.	12,875.9	12,456.9	419.0	7,032.2	64.7	3.3
	Okt.	12,938.2	12,550.1	388.1	7,045.7	64.7	3.0
	Nov.	12,722.4	12,323.7	398.7	7,245.7	63.7	3.1
	Dis.	13,092.1	12,687.2	404.9	6,997.3	65.2	3.1
2012	Jan.	13,191.6	12,781.3	410.4	6,878.5	65.7	3.1
	Feb.	13,054.5	12,645.6	408.9	7,042.3	65.0	3.1
	Mac	13,295.4	12,893.8	401.6	6,897.3	65.8	3.0
	Apr.	13,331.8	12,936.9	394.8	6,851.3	66.1	3.0
	Mei	13,245.6	12,861.2	384.4	6,952.9	65.6	2.9
	Jun	13,232.5	12,811.4	421.0	7,013.7	65.4	3.2
	Jul.	13,511.7	13,093.3	418.4	6,777.3	66.6	3.1
	Ogos	13,313.6	12,963.4	350.2	7,039.9	65.4	2.6
	Sept.	13,408.5	12,984.5	424.0	6,993.2	65.7	3.2
	Okt.	13,341.4	12,908.9	432.6	7,056.2	65.4	3.2
	Nov.	13,429.2	13,044.6	384.6	7,094.6	65.4	2.9
	Dis.	13,538.6	13,114.3	424.3	7,060.6	65.7	3.1
2013	Jan.	13,569.6	13,109.8	459.8	7,035.5	65.9	3.4
	Feb.	13,598.8	13,195.9	402.9	7,119.8	65.6	3.0
	Mac	13,684.4	13,241.7	442.6	7,116.7	65.8	3.2
	Apr.	13,835.7	13,422.9	412.8	6,922.7	66.7	3.0
	Mei	13,815.3	13,368.9	446.4	7,005.6	66.4	3.2
	Jun	14,217.1	13,816.9	400.2	6,668.6	68.1	2.8
	Jul.	14,194.6	13,763.0	431.6	6,655.9	68.1	3.0
	Ogos	14,176.6	13,734.2	442.4	6,689.8	67.9	3.1
	Sept.	14,309.4	13,859.5	449.9	6,557.3	68.6	3.1
	Okt.	14,169.2	13,699.1	470.1	6,746.3	67.7	3.3
	Nov.	14,220.9	13,730.4	490.5	6,716.2	67.9	3.4
	Dis.	14,276.5	13,836.2	440.3	6,724.3	68.0	3.1
2014	Jan.	14,244.4	13,775.9	468.5	6,734.7	67.9	3.3
	Feb.	14,249.9	13,788.0	462.0	6,808.7	67.7	3.2
	Mac	14,198.4	13,768.3	430.1	6,956.1	67.1	3.0
	Apr.	14,206.7	13,793.2	413.5	6,849.4	67.5	2.9
	Mei	14,430.2	14,023.0	407.2	6,693.2	68.3	2.8
	Jun	14,373.4	13,967.0	406.4	6,826.6	67.8	2.8
	Jul.	14,333.4	13,935.8	397.6	6,846.2	67.7	2.8
	Ogos	14,266.3	13,881.4	384.9	6,934.1	67.3	2.7
	Sept.	14,440.2	14,058.4	381.8	6,763.7	68.1	2.6
	Okt.	14,403.1	14,023.3	379.9	6,926.7	67.5	2.6
	Nov.	14,404.1	14,025.4	378.7	6,887.1	67.7	2.6
	Dis.	14,512.0	14,060.2	451.7	6,784.8	68.1	3.1
2015	Jan.	14,442.0	13,991.8	450.3	6,923.7	67.6	3.1
	Feb.	14,554.7	14,092.9	461.8	6,847.8	68.0	3.2
	Mac	14,601.2	14,160.5	440.7	6,839.3	68.1	3.0
	Apr.	14,569.5	14,136.2	433.3	6,890.2	67.9	3.0
	Mei	14,575.0	14,126.7	448.3	6,933.5	67.8	3.1
	Jun	14,609.9	14,146.7	463.2	6,896.2	67.9	3.2
	Jul.	14,579.1	14,106.2	472.9	6,937.7	67.8	3.2
	Ogos	14,685.1	14,214.6	470.5	6,871.5	68.1	3.2
	Sept.	14,642.0	14,151.7	490.3	6,925.4	67.9	3.3
	Okt.	14,665.9	14,184.7	481.3	6,894.8	68.0	3.3
	Nov.	14,687.2	14,215.7	471.5	6,945.0	67.9	3.2
	Dis.	14,690.0	14,185.7	504.3	6,945.3	67.9	3.4

**Jadual 1a: Indikator Utama Tenaga Buruh, Malaysia, Januari 2010 - April 2020 (Samb.)**

*Table 1a: Time Series Principal Indicator of Labour Force, Malaysia, January 2010 - April 2020 (Cont.)*

Tahun Year	Bulan Month	Tenaga Buruh Labour Force ( <sup>'000</sup> )	Bekerja Employed ( <sup>'000</sup> )	Penganggur Unemployed ( <sup>'000</sup> )	Luar Tenaga Buruh Outside Labour Force ( <sup>'000</sup> )	Kadar Penyertaan Tenaga Buruh Labour Force Participation (%)	Kadar Pengangguran Unemployment Rate (%)	Kadar Pengangguran (Pelarasan Musim) Unemployment Rate (Seasonally Adjusted) (%)
2016	Jan.	14,652.0	14,150.5	501.5	6,984.2	67.7	3.4	3.2
	Feb.	14,703.3	14,196.9	506.4	7,063.1	67.6	3.4	3.2
	Mac	14,710.1	14,200.7	509.5	6,964.0	67.9	3.5	3.5
	Apr.	14,675.3	14,163.7	511.5	7,012.5	67.7	3.5	3.6
	Mei	14,705.0	14,200.2	504.8	7,021.1	67.7	3.4	3.4
	Jun	14,720.1	14,218.4	501.8	7,036.5	67.7	3.4	3.5
	Jul.	14,729.0	14,212.8	516.2	7,008.4	67.8	3.5	3.5
	Ogos	14,822.2	14,306.9	515.2	7,053.3	67.8	3.5	3.6
	Sept.	14,762.2	14,249.6	512.6	7,084.3	67.6	3.5	3.6
	Okt.	14,765.1	14,253.4	511.7	7,071.1	67.6	3.5	3.5
	Nov.	14,827.9	14,317.2	510.7	7,081.8	67.7	3.4	3.6
	Dis.	14,788.9	14,276.7	512.2	7,072.8	67.6	3.5	3.5
2017	Jan.	14,880.9	14,366.8	514.1	7,090.4	67.7	3.5	3.3
	Feb.	14,916.7	14,401.8	514.8	7,086.9	67.8	3.5	3.4
	Mac	14,932.5	14,421.7	510.8	7,121.8	67.7	3.4	3.3
	Apr.	14,941.5	14,429.6	511.9	7,122.5	67.7	3.4	3.4
	Mei	14,961.9	14,454.4	507.5	7,120.8	67.8	3.4	3.4
	Jun	15,027.6	14,519.9	507.7	7,141.1	67.8	3.4	3.4
	Jul.	15,016.4	14,497.4	519.0	7,150.4	67.7	3.5	3.5
	Ogos	15,030.2	14,513.4	516.9	7,138.4	67.8	3.4	3.4
	Sept.	15,058.8	14,544.3	514.5	7,122.1	67.9	3.4	3.5
	Okt.	15,090.4	14,581.7	508.8	7,117.7	68.0	3.4	3.5
	Nov.	15,084.0	14,578.9	505.1	7,121.4	67.9	3.3	3.4
	Dis.	15,145.9	14,640.1	505.8	7,084.1	68.1	3.3	3.3
2018	Jan.	15,187.0	14,670.5	516.5	7,074.8	68.2	3.4	3.3
	Feb.	15,230.0	14,721.5	508.5	7,112.3	68.2	3.3	3.2
	Mac	15,241.2	14,732.5	508.7	7,115.0	68.2	3.3	3.3
	Apr.	15,313.1	14,803.1	510.0	7,130.9	68.2	3.3	3.3
	Mei	15,357.5	14,852.6	504.8	7,097.1	68.4	3.3	3.3
	Jun	15,379.0	14,863.2	515.8	7,062.2	68.5	3.4	3.4
	Jul.	15,401.0	14,882.4	518.6	7,044.5	68.6	3.4	3.4
	Ogos	15,421.4	14,896.5	525.0	7,133.9	68.4	3.4	3.4
	Sept.	15,442.9	14,926.5	516.4	7,096.8	68.5	3.3	3.3
	Okt.	15,450.0	14,937.1	512.9	7,093.7	68.5	3.3	3.3
	Nov.	15,457.5	14,941.3	516.2	7,151.2	68.4	3.3	3.4
	Dis.	15,500.1	14,986.0	514.2	7,120.1	68.5	3.3	3.3
2019	Jan.	15,508.5	14,992.8	515.6	7,095.9	68.6	3.3	3.2
	Feb.	15,543.2	15,026.8	516.4	7,145.9	68.5	3.3	3.3
	Mac	15,556.6	15,035.2	521.3	7,169.4	68.5	3.4	3.4
	Apr.	15,613.1	15,089.8	523.3	7,184.4	68.5	3.4	3.4
	Mei	15,642.3	15,122.5	519.8	7,190.0	68.5	3.3	3.3
	Jun	15,655.9	15,134.6	521.4	7,156.7	68.6	3.3	3.3
	Jul.	15,704.6	15,179.8	524.8	7,207.7	68.5	3.3	3.3
	Ogos	15,706.0	15,185.8	520.2	7,172.4	68.6	3.3	3.3
	Sept.	15,751.2	15,229.9	521.4	7,159.8	68.7	3.3	3.3
	Okt.	15,777.7	15,265.6	512.1	7,175.0	68.7	3.2	3.2
	Nov.	15,828.9	15,315.0	513.9	7,174.2	68.8	3.2	3.3
	Dis.	15,803.0	15,286.0	517.0	7,129.8	68.9	3.3	3.3
2020	Jan.	15,829.3	15,317.6	511.7	7,128.9	68.9	3.2	3.2
	Feb.	15,869.8	15,344.5	525.2	7,224.0	68.7	3.3	3.3
	Mac	15,842.9	15,232.4	610.5	7,239.8	68.6	3.9	3.9
	Apr.	15,712.2	14,933.4	778.8	7,345.1	68.1	5.0	5.0



**Jadual 1b: Indikator Utama Tenaga Buruh, Malaysia - Perubahan peratusan dari tahun sebelumnya, Januari 2010 - April 2020**

*Table 1b: Time Series Principal Indicator of Labour Force, Malaysia - Percentage change year-on-year, January 2010 - April 2020*

Tahun Year	Bulan Month	Tenaga Buruh Labour Force	Bekerja Employed	Penganggur Unemployed	Luar Tenaga Buruh Outside Labour Force	Kadar Penyertaan Tenaga Buruh Labour Force Participation	Kadar Pengangguran Unemployment Rate
2011	Januari	3.5	3.7	(2.0)	(0.7)	1.5	(5.4)
	Februari	4.5	5.1	(13.5)	(1.6)	2.3	(18.0)
	Mac	4.3	4.9	(14.5)	(0.8)	1.8	(18.8)
	April	3.2	3.3	1.6	0.5	1.0	(1.6)
	Mei	4.2	4.4	(0.6)	(0.7)	1.8	(4.8)
	Jun	3.6	4.0	(9.2)	0.1	1.2	(12.8)
	Julai	3.5	3.9	(7.7)	0.3	1.1	(11.2)
	Ogos	4.5	4.5	4.3	(1.7)	2.2	0.4
	September	4.7	4.5	10.3	(2.3)	2.5	5.7
	Oktober	1.9	1.7	11.3	2.9	(0.3)	9.3
	November	3.6	3.7	(1.2)	(0.7)	1.6	(4.7)
	Disember	2.1	2.1	0.2	4.0	(0.7)	(1.9)
2012	Januari	3.0	3.2	(4.2)	(0.0)	1.0	(7.2)
	Februari	3.4	3.2	9.0	(1.0)	1.5	5.6
	Mac	3.3	3.2	8.1	(0.6)	1.4	4.8
	April	3.1	3.1	2.6	(1.1)	1.5	(0.5)
	Mei	4.0	4.2	(3.1)	(2.6)	2.3	(7.1)
	Jun	3.5	3.5	2.6	(0.9)	1.5	(0.8)
	Julai	4.1	4.0	8.1	(2.1)	2.1	4.0
	Ogos	3.2	3.7	(13.6)	0.0	1.1	(16.8)
	September	4.1	4.1	1.2	(0.6)	1.6	(2.9)
	Oktober	3.1	2.8	10.8	0.2	1.0	7.8
	November	5.4	5.7	(3.6)	(2.1)	2.7	(9.0)
	Disember	3.4	3.3	4.7	0.9	0.8	1.3
2013	Januari	2.8	2.5	11.4	2.3	0.2	8.6
	Februari	4.1	4.3	(1.5)	1.1	1.0	(5.6)
	Mac	2.9	2.7	9.7	3.1	(0.1)	6.9
	April	3.7	3.7	4.5	1.0	0.9	0.7
	Mei	4.2	3.9	15.0	0.8	1.2	10.8
	Jun	7.2	7.6	(5.1)	(5.0)	4.1	(12.2)
	Julai	4.9	5.0	3.1	(1.8)	2.2	(1.8)
	Ogos	6.3	5.8	23.4	(5.1)	3.8	17.1
	September	6.5	6.5	5.9	(6.4)	4.2	(0.6)
	Oktober	6.0	5.9	8.3	(4.5)	3.5	2.3
	November	5.7	5.1	24.3	(5.5)	3.7	18.6
	Disember	5.3	5.4	3.7	(4.9)	3.4	(1.6)
2014	Januari	4.9	5.0	1.9	(4.4)	3.1	(3.0)
	Februari	4.7	4.4	13.7	(4.5)	3.0	9.0
	Mac	3.7	3.9	(2.9)	(2.3)	2.0	(6.6)
	April	2.6	2.7	0.2	(1.1)	1.2	(2.5)
	Mei	4.4	4.8	(9.2)	(4.6)	2.9	(13.5)
	Jun	1.1	1.1	1.5	2.3	(0.4)	0.4
	Julai	1.0	1.2	(8.2)	2.8	(0.6)	(9.2)
	Ogos	0.6	1.1	(13.9)	3.6	(1.0)	(14.6)
	September	0.9	1.4	(16.4)	3.1	(0.7)	(17.3)
	Oktober	1.6	2.3	(21.3)	2.6	(0.3)	(22.9)
	November	1.3	2.1	(25.9)	2.5	(0.4)	(27.2)
	Disember	1.6	1.6	2.6	0.9	0.2	0.9
2015	Januari	1.4	1.6	(4.0)	2.8	(0.4)	(5.9)
	Februari	2.1	2.2	(0.0)	0.6	0.5	(1.3)
	Mac	2.8	2.8	2.4	(1.7)	1.5	(1.0)
	April	2.5	2.5	4.7	0.6	0.6	3.0
	Mei	1.0	0.7	9.6	3.5	(0.8)	9.4
	Jun	1.6	1.3	13.1	1.0	0.1	12.4
	Julai	1.7	1.2	17.3	1.3	0.2	14.3
	Ogos	2.9	2.4	20.1	(0.9)	1.2	17.1
	September	1.4	0.7	25.0	2.4	(0.3)	22.2
	Oktober	1.8	1.1	23.7	(0.5)	0.7	22.4
	November	1.9	1.3	21.9	0.8	0.4	19.7
	Disember	1.2	0.9	11.0	2.3	(0.4)	8.8
2016	Januari	1.5	1.1	11.4	0.9	0.1	9.7
	Februari	1.0	0.7	9.7	3.1	(0.6)	6.3
	Mac	0.7	0.3	15.6	1.8	(0.3)	16.7
	April	0.7	0.2	18.0	1.8	(0.3)	16.7
	Mei	0.9	0.5	12.6	1.3	(0.1)	9.7
	Jun	0.8	0.5	8.3	2.0	(0.3)	6.3
	Julai	1.0	0.8	9.2	1.0	-	9.4
	Ogos	0.9	0.6	9.5	2.6	(0.4)	9.4
	September	0.8	0.7	4.5	2.3	(0.4)	6.1
	Oktober	0.7	0.5	6.3	2.6	(0.6)	6.1
	November	1.0	0.7	8.3	2.0	(0.3)	6.3
	Disember	0.7	0.6	1.6	1.8	(0.4)	2.9

**Jadual 1b: Indikator Utama Tenaga Buruh, Malaysia - Peratus perubahan tahun ke tahun, Januari 2010 - April 2020 (Samb.)**

*Table 1b: Time Series Principal Indicator of Labour Force, Malaysia - Percentage change year-on-year, January 2010 - April 2020 (Cont.)*

Tahun Year	Bulan Month	Tenaga Buruh Labour Force	Bekerja Employed	Penganggur Unemployed	Luar Tenaga Buruh Outside Labour Force	Kadar Penyertaan Tenaga Buruh Labour Force Participation	Kadar Pengangguran Unemployment Rate	Kadar Pengangguran (Pelarasan Musim) Unemployment Rate (Seasonally Adjusted)
2017	Januari	1.6	1.5	2.5	1.5	-	0.1	0.1
	Februari	1.5	1.4	1.7	0.3	0.2	0.1	0.2
	Mac	1.5	1.6	0.3	2.3	(0.2)	(0.1)	(0.2)
	April	1.8	1.9	0.1	1.6	-	(0.1)	(0.2)
	Mei	1.7	1.8	0.5	1.4	0.1	-	-
	Jun	2.1	2.1	1.2	1.5	0.1	-	(0.1)
	Julai	2.0	2.0	0.5	2.0	(0.1)	-	-
	Ogos	1.4	1.4	0.3	1.2	-	(0.1)	(0.2)
	September	2.0	2.1	0.4	0.5	0.3	(0.1)	(0.1)
	Oktober	2.2	2.3	(0.6)	0.7	0.4	(0.1)	-
	November	1.7	1.8	(1.1)	0.6	0.2	(0.1)	(0.2)
	Disember	2.4	2.5	(1.2)	0.2	0.5	(0.2)	(0.2)
2018	Januari	2.1	2.1	0.5	(0.2)	0.5	(0.1)	-
	Februari	2.1	2.2	(1.2)	0.4	0.4	(0.2)	(0.2)
	Mac	2.1	2.2	(0.4)	(0.1)	0.5	(0.1)	-
	April	2.5	2.6	(0.4)	0.1	0.5	(0.1)	(0.1)
	Mei	2.6	2.8	(0.5)	(0.3)	0.6	(0.1)	(0.1)
	Jun	2.3	2.4	1.6	(1.1)	0.7	-	-
	Julai	2.6	2.7	(0.1)	(1.5)	0.9	(0.1)	(0.1)
	Ogos	2.6	2.6	1.6	(0.1)	0.6	-	-
	September	2.6	2.6	0.4	(0.4)	0.6	(0.1)	(0.2)
	Oktober	2.4	2.4	0.8	(0.3)	0.5	(0.1)	(0.2)
	November	2.5	2.5	2.2	0.4	0.5	-	-
	Disember	2.3	2.4	1.7	0.5	0.4	-	-
2019	Januari	2.1	2.2	(0.2)	0.3	0.4	(0.1)	(0.1)
	Februari	2.1	2.1	1.6	0.5	0.3	-	0.1
	Mac	2.1	2.1	2.5	0.8	0.3	0.1	0.1
	April	2.0	1.9	2.6	0.7	0.3	0.1	0.1
	Mei	1.9	1.8	3.0	1.3	0.1	-	-
	Jun	1.8	1.8	1.1	1.3	0.1	(0.1)	(0.1)
	Julai	2.0	2.0	1.2	2.3	(0.1)	(0.1)	(0.1)
	Ogos	1.8	1.9	(0.9)	0.5	0.2	(0.1)	(0.1)
	September	2.0	2.0	1.0	0.9	0.2	-	-
	Oktober	2.1	2.2	(0.2)	1.1	0.2	(0.1)	(0.1)
	November	2.4	2.5	(0.4)	0.3	0.4	(0.1)	(0.1)
	Disember	2.0	2.0	0.5	0.1	0.4	-	-
2020	Januari	2.1	2.2	(0.8)	0.5	0.3	(0.1)	-
	Februari	2.1	2.1	1.7	1.1	0.2	-	-
	Mac	1.8	1.3	17.1	1.0	0.2	0.5	0.5
	April	0.6	(1.0)	48.8	2.2	(0.3)	1.6	1.6

**Jadual 2: Statistik utama tenaga buruh, Malaysia, 1982–2019**  
 Table 2: Principal statistics of labour force, Malaysia, 1982–2019

Tahun Year	('000)					(%)	
	Tenaga buruh Labour force	Bekerja Employed	Bekerja kurang dari 30 jam Working less than 30 hours	Penganggur Unemployed	Luar tenaga buruh Outside labour force	Kadar penyertaan tenaga buruh Labour force participation rate	Kadar pengangguran Unemployment rate
1982	5,431.4	5,249.0	401.9	182.4	2,944.6	64.8	3.4
1983	5,671.8	5,457.0	520.9	214.9	2,969.4	65.6	3.8
1984	5,862.5	5,566.7	661.6	295.8	3,119.6	65.3	5.0
1985	5,990.1	5,653.4	696.5	336.8	3,124.9	65.7	5.6
1986	6,222.1	5,760.1	789.5	461.9	3,188.3	66.1	7.4
1987	6,456.8	5,983.9	750.6	472.9	3,246.1	66.5	7.3
1988	6,637.0	6,157.2	860.6	479.8	3,301.5	66.8	7.2
1989	6,779.4	6,390.9	665.6	388.5	3,463.5	66.2	5.7
1990	7,000.2	6,685.0	599.1	315.2	3,519.7	66.5	4.5
1992	7,319.0	7,047.8	515.0	271.2	3,783.6	65.9	3.7
1993	7,700.1	7,383.4	653.3	316.8	3,874.9	66.5	4.1
1995	7,893.1	7,645.0	482.4	248.1	4,297.7	64.7	3.1
1996	8,616.0	8,399.3	556.8	216.8	4,379.0	66.3	2.5
1997	8,784.0	8,569.2	509.8	214.9	4,605.1	65.6	2.4
1998	8,883.6	8,599.6	486.9	284.0	4,934.0	64.3	3.2
1999	9,151.5	8,837.8	464.7	313.7	5,098.4	64.2	3.4
2000	9,556.1	9,269.2	491.4	286.9	5,065.1	65.4	3.0
2001	9,699.4	9,357.0	525.0	342.4	5,239.9	64.9	3.5
2002	9,886.2	9,542.6	516.7	343.5	5,473.8	64.4	3.5
2003	10,239.6	9,869.7	529.0	369.8	5,458.6	65.2	3.6
2004	10,346.2	9,979.5	599.3	366.6	5,730.5	64.4	3.5
2005	10,413.4	10,045.4	484.4	368.1	6,048.2	63.3	3.5
2006	10,628.9	10,275.4	471.9	353.6	6,205.1	63.1	3.3
2007	10,889.5	10,538.1	511.3	351.4	6,330.1	63.2	3.2
2008	11,028.1	10,659.6	470.7	368.5	6,575.7	62.6	3.3
2009	11,315.3	10,897.3	478.7	418.0	6,665.7	62.9	3.7
2010	12,303.9	11,899.5	503.0	404.4	7,023.0	63.7	3.3
2011	12,740.7	12,351.5	520.6	389.2	7,023.3	64.5	3.1
2012	13,221.7	12,820.5	589.3	401.2	6,927.4	65.6	3.0
2013	13,980.5	13,545.4	645.8	435.1	6,781.2	67.3	3.1
2014	14,263.6	13,852.6	534.8	411.1	6,821.0	67.6	2.9
2015	14,518.0	14,067.7	580.3	450.3	6,869.9	67.9	3.1
2016	14,667.8	14,163.7	502.8	504.1	6,987.6	67.7	3.4
2017	14,980.1	14,476.8	413.5	503.3	7,065.0	68.0	3.4
2018	15,280.3	14,776.0	437.5	504.3	7,094.4	68.3	3.3
2019	15,581.6	15,073.4	337.6	508.2	7,103.5	68.7	3.3

**Jadual 2a: Statistik utama tenaga buruh mengikut jantina, Malaysia, 1982–2019**

Table 2a: Principal statistics of labour force by sex, Malaysia, 1982–2019

**Lelaki/Male**

Tahun Year	('000)					(%)	
	Tenaga buruh <i>Labour force</i>	Bekerja <i>Employed</i>	Bekerja kurang dari 30 jam <i>Working less than 30 hours</i>	Penganggur <i>Unemployed</i>	Luar tenaga buruh <i>Outside labour force</i>	Kadar penyertaan tenaga buruh <i>Labour force participation rate</i>	Kadar pengangguran <i>Unemployment rate</i>
1982	3,562.3	3,465.3	199.4	97.0	611.5	85.3	2.7
1983	3,693.1	3,570.4	272.1	122.6	620.8	85.6	3.3
1984	3,832.2	3,662.6	346.2	169.6	654.9	85.4	4.4
1985	3,896.7	3,700.5	374.1	196.1	657.7	85.6	5.0
1986	4,037.7	3,753.5	440.6	284.2	666.0	85.8	7.0
1987	4,151.3	3,868.0	395.8	283.3	697.3	85.6	6.8
1988	4,268.7	3,984.0	471.4	284.7	700.6	85.9	6.7
1989	4,389.1	4,155.3	355.1	233.7	737.5	85.6	5.3
1990	4,489.8	4,310.7	303.5	179.1	775.1	85.3	4.0
1992	4,716.5	4,554.2	249.2	162.3	841.4	84.9	3.4
1993	5,043.3	4,853.8	355.0	189.5	820.6	86.0	3.8
1995	5,203.1	5,056.6	249.4	146.5	967.0	84.3	2.8
1996	5,653.9	5,514.2	280.9	139.6	1,006.1	84.9	2.5
1997	5,787.3	5,657.7	248.5	129.6	1,080.8	84.3	2.2
1998	5,904.2	5,718.9	259.1	185.3	1,196.8	83.1	3.1
1999	6,063.5	5,851.2	239.5	212.3	1,261.1	82.8	3.5
2000	6,156.2	5,973.5	252.1	182.7	1,257.1	83.0	3.0
2001	6,268.3	6,055.9	266.6	212.3	1,344.0	82.3	3.4
2002	6,352.3	6,141.8	257.0	210.5	1,438.4	81.5	3.3
2003	6,559.4	6,323.6	268.6	235.8	1,428.4	82.1	3.6
2004	6,615.1	6,390.4	310.2	224.7	1,563.7	80.9	3.4
2005	6,700.9	6,470.5	256.5	230.4	1,677.1	80.0	3.4
2006	6,843.5	6,618.6	253.8	224.9	1,719.6	79.9	3.3
2007	6,963.5	6,747.1	264.3	216.4	1,794.4	79.5	3.1
2008	7,074.6	6,851.1	251.1	223.5	1,881.1	79.0	3.2
2009	7,218.1	6,955.7	249.4	262.4	1,926.9	78.9	3.6
2010	7,955.5	7,707.8	260.3	247.7	2,071.7	79.3	3.1
2011	8,172.4	7,934.8	267.1	237.6	2,079.7	79.7	2.9
2012	8,419.0	8,169.5	280.9	249.6	2,036.7	80.5	3.0
2013	8,739.4	8,484.6	299.7	254.8	2,056.3	81.0	2.9
2014	8,823.2	8,587.5	209.6	235.7	2,126.2	80.6	2.7
2015	8,952.8	8,691.0	243.9	261.8	2,148.7	80.6	2.9
2016	9,012.1	8,729.7	215.2	282.4	2,229.7	80.2	3.1
2017	9,213.5	8,913.4	172.9	300.1	2,294.6	80.1	3.3
2018	9,330.2	9,041.8	172.6	288.4	2,271.3	80.4	3.1
2019	9,503.5	9,202.4	137.6	301.1	2,253.5	80.8	3.2

**Jadual 2b: Statistik utama tenaga buruh mengikut jantina, Malaysia, 1982–2019**

Table 2b: Principal statistics of labour force by sex, Malaysia, 1982–2019

**Perempuan/Female**

Tahun Year	('000)					(%)	
	Tenaga buruh Labour force	Bekerja Employed	Bekerja kurang dari 30 jam Working less than 30 hours	Penganggur Unemployed	Luar tenaga buruh Outside labour force	Kadar penyertaan tenaga buruh Labour force participation rate	Kadar pengangguran Unemployment rate
1982	1,869.1	1,783.7	202.5	85.4	2,333.1	44.5	4.6
1983	1,978.8	1,886.5	248.8	92.2	2,348.6	45.7	4.7
1984	2,030.3	1,904.1	315.4	126.2	2,464.7	45.2	6.2
1985	2,093.5	1,952.8	322.4	140.6	2,467.3	45.9	6.7
1986	2,184.3	2,006.6	348.9	177.7	2,522.3	46.4	8.1
1987	2,305.5	2,115.9	354.8	189.6	2,548.9	47.5	8.2
1988	2,368.4	2,173.2	389.2	195.1	2,600.9	47.7	8.2
1989	2,390.3	2,235.5	310.5	154.8	2,726.0	46.7	6.5
1990	2,510.3	2,374.3	295.6	136.1	2,744.6	47.8	5.4
1992	2,602.5	2,493.6	265.9	108.9	2,942.2	46.9	4.2
1993	2,656.9	2,529.6	298.3	127.3	3,054.4	46.5	4.8
1995	2,690.0	2,588.4	233.1	101.6	3,330.7	44.7	3.8
1996	2,962.1	2,885.0	275.9	77.1	3,372.9	46.8	2.6
1997	2,996.7	2,911.5	261.3	85.3	3,524.3	46.0	2.8
1998	2,979.4	2,880.7	227.8	98.7	3,737.2	44.4	3.3
1999	3,088.0	2,986.5	225.2	101.4	3,837.4	44.6	3.3
2000	3,399.9	3,295.7	239.3	104.2	3,807.9	47.2	3.1
2001	3,431.1	3,301.1	258.5	130.1	3,895.9	46.8	3.8
2002	3,533.9	3,400.8	259.7	133.1	4,035.4	46.7	3.8
2003	3,680.1	3,546.1	260.4	134.0	4,030.1	47.7	3.6
2004	3,731.1	3,589.1	289.3	142.0	4,166.9	47.2	3.8
2005	3,712.5	3,574.8	227.8	137.7	4,371.1	45.9	3.7
2006	3,785.4	3,656.8	218.1	128.7	4,485.5	45.8	3.4
2007	3,926.0	3,791.0	247.0	135.0	4,535.7	46.4	3.4
2008	3,953.5	3,808.5	219.6	145.0	4,694.6	45.7	3.7
2009	4,097.2	3,941.6	229.3	155.6	4,738.8	46.4	3.8
2010	4,348.4	4,191.7	242.7	156.8	4,951.2	46.8	3.6
2011	4,568.3	4,416.7	253.4	151.6	4,943.6	48.0	3.3
2012	4,802.6	4,651.0	308.4	151.6	4,890.7	49.5	3.2
2013	5,241.1	5,060.8	346.1	180.3	4,724.9	52.6	3.4
2014	5,440.4	5,265.1	325.2	175.4	4,694.9	53.7	3.2
2015	5,565.1	5,376.7	336.4	188.5	4,721.2	54.1	3.4
2016	5,655.7	5,434.0	287.7	221.7	4,757.9	54.3	3.9
2017	5,766.5	5,563.3	240.6	203.2	4,770.5	54.7	3.5
2018	5,950.1	5,734.2	264.9	215.9	4,823.2	55.2	3.6
2019	6,078.1	5,871.0	200.0	207.1	4,850.1	55.6	3.4

**Jadual 3: Penduduk bekerja mengikut industri, Malaysia, 2010-2019**

Table 3: Employed persons by industry, Malaysia, 2010-2019

	('000)									
Industri/ Industry	2010	2011	2012	2013	2014	2015	2016	2017	2018	2019
A	1,614.9	1,421.7	1,628.2	1,758.9	1,694.2	1,753.9	1,609.9	1,635.0	1,570.3	1,541.1
B	57.2	73.5	80.8	87.9	84.7	104.4	96.3	97.2	90.8	91.0
C	2,108.5	2,244.0	2,263.7	2,315.8	2,372.5	2,322.7	2,390.6	2,513.3	2,499.9	2,681.5
D	55.5	51.0	61.9	61.5	65.6	61.7	77.9	62.2	68.8	71.4
E	66.7	71.9	81.0	83.7	81.2	72.1	76.4	81.0	88.6	88.8
F	1,082.7	1,151.5	1,174.7	1,292.1	1,277.7	1,309.9	1,251.7	1,258.9	1,257.8	1,276.4
G	1,887.8	2,005.4	2,125.6	2,261.4	2,324.4	2,361.4	2,428.5	2,485.4	2,544.6	2,594.5
H	554.7	604.0	624.3	626.5	598.2	615.0	630.4	658.2	697.9	667.6
I	856.7	951.1	965.1	1,041.5	1,149.3	1,150.8	1,260.7	1,323.2	1,473.4	1,549.7
J	178.9	206.5	208.8	194.1	213.2	214.2	208.7	220.3	216.4	213.9
K	323.4	319.3	322.1	318.9	329.1	354.4	346.9	369.0	338.6	335.1
L	58.5	61.2	68.9	72.7	79.7	71.2	82.4	84.5	97.2	92.1
M	285.6	328.4	307.3	306.8	328.8	359.3	361.8	348.1	367.7	385.7
N	359.2	448.0	532.2	566.9	654.3	634.8	657.0	677.2	747.6	806.2
O	787.7	750.2	696.4	761.4	741.7	751.0	748.2	742.2	720.2	737.1
P	779.3	782.3	784.9	816.6	871.4	899.0	928.7	880.3	988.7	962.3
Q	280.0	384.1	414.3	490.0	532.9	573.1	570.3	588.0	551.2	527.7
R	91.6	87.5	84.8	79.4	94.1	81.7	80.9	84.3	85.6	79.0
S	182.9	181.8	190.5	192.4	199.1	233.1	230.8	260.1	264.8	266.1
T	285.4	225.8	202.7	214.8	159.1	142.3	124.7	106.9	103.9	104.3

**Nota/Note :**

<sup>1</sup> Industri dikelaskan mengikut "Piawaian Klasifikasi Industri Malaysia (MSIC) 2008". Keterangan kategori industri adalah seperti berikut:

Industry is classified according to the "Malaysia Standard Industrial Classification (MSIC) 2008". Category of industry are as follows:

**Pertanian,**

Agriculture, forestry and fishing

**B Perlombongan dan pengkuarian**

Mining and quarrying

**Pembuata**

Manufacturing

**D Bekalan elektrik, gas, wap dan pendingin udara**

Electricity, gas, steam and air conditioning supply

**E Bekalan air; pembentungan, pengurusan sisa dan aktiviti pemulhan**

Water supply; sewerage, waste management and remediation activities

**F Pembinaan**

Construction

**G Perdagangan borong dan runcit, pembalkan kenderaan bermotor dan motosikal**

Wholes

**H Pengangkutan dan penyimpanan**

Transportation and storage

**I Penginapan dan aktiviti perkhidmatan makanan dan minuman**

Accommodation and food service activities

**J Maklumat dan komunikasi**

Information and communication

**K Aktiviti kewangan dan insurans/takaful**

Financial and insurance/takaful activities

**L Aktiviti hartanah**

Real estate activities

**M Aktiviti profesional, saintifik dan teknikal**

Professional, scientific and technical activities

**N Aktiviti pentadbiran dan khidmat sokongan**

Administrative and support service activities

**O Pentadbiran awam dan pertahanan; aktiviti keselamatan sosial wajib**

Public administration and defence; compulsory social security

**P Pendidikan**

Education

**Q Aktiviti kesihatan kemanusiaan dan kerja sosial**

Human health and social work activities

**R Kesenian, hiburan dan rekreasi**

Arts, entertainment and recreation

**S Aktiviti perkhidmatan lain**

Others service activities

**T Aktiviti isi rumah sebagai majikan**

Activities of households as employers

<sup>2</sup> Jumlah termasuk 'Aktiviti badan dan pertubuhan luar wilayah'

Total includes 'Activities of extraterritorial organizations and bodies'

**Jadual 4: Penduduk bekerja mengikut pekerjaan, Malaysia, 2011-2015**

Table 4: Employed persons by occupation, Malaysia, 2011-2015

('000)

Tahun Year	Jumlah Total	Pekerjaan Occupation								
		1	2	3	4	5	6	7	8	9
2011 <sup>f</sup>	<b>12,351.5</b>	692.4	1,221.0	1,306.3	1,180.3	2,503.2	1,011.8	1,345.8	1,570.2	1,520.4
2012 <sup>f</sup>	<b>12,820.5</b>	684.4	1,244.0	1,283.4	1,168.8	2,640.7	1,184.1	1,428.5	1,576.8	1,609.8
2013 <sup>f</sup>	<b>13,545.4</b>	695.5	1,284.7	1,292.6	1,190.7	2,911.0	1,180.2	1,492.1	1,694.4	1,804.0
2014 <sup>f</sup>	<b>13,852.6</b>	664.4	1,376.5	1,367.2	1,237.8	3,169.3	1,002.4	1,555.1	1,659.1	1,820.8
2015	<b>14,067.7</b>	718.6	1,462.0	1,406.9	1,241.1	3,188.9	940.3	1,578.8	1,585.2	1,945.9

Nota/Note:

<sup>1</sup> Pekerjaan dikelaskan mengikut klasifikasi "Piawai Pengelasan Pekerjaan, Malaysia (MASCO) 2008". Kategori pekerjaan adalah seperti berikut:

Occupation is classified according to the "Malaysia Standard Classification of Occupations (MASCO) 2008". Category of occupation are as follows:

<b>1</b>	<b>Pengurus</b> <i>Managers</i>	<b>6</b>	<b>Pekerja mahir pertanian, perhutanan dan perikanan</b> <i>Skilled agricultural, forestry and fishery workers</i>
<b>2</b>	<b>Profesional</b> <i>Professionals</i>	<b>7</b>	<b>Pekerja kemahiran dan pekerja pertukangan yang berkaitan</b> <i>Craft and related trades workers</i>
<b>3</b>	<b>Juruteknik dan profesional bersekutu</b> <i>Technicians and associate professionals</i>	<b>8</b>	<b>Operator loji dan mesin serta pemasang</b> <i>Plant and machine-operators and assemblers</i>
<b>4</b>	<b>Pekerja sokongan perkeranian</b> <i>Clerical support workers</i>	<b>9</b>	<b>Pekerjaan asas</b> <i>Elementary occupations</i>
<b>5</b>	<b>Pekerja perkhidmatan dan jualan</b> <i>Service and sales workers</i>		

<sup>f</sup> Statistik 2011-2014 dikemaskini berdasarkan anggaran penduduk semasa tahun berkenaan.

The 2011-2014 statistics were updated based on the population estimates of the respective years.

Jadual 4: Penduduk bekerja mengikut pekerjaan, Malaysia, 2016 - 2019 (samb.)

Table 4: Employed persons by occupation, Malaysia, 2016 - 2019 (cont'd)

Tahun Year	Jumlah Total	Pekerjaan Occupation								
		1	2	3	4	5	6	7	8	9
2016	14,163.7	658.5	1,755.2	1,453.5	1,163.8	3,176.3	872.0	1,570.3	1,669.8	1,844.2
2017	14,476.8	690.3	1,771.6	1,522.9	1,236.5	3,212.6	898.9	1,517.1	1,766.5	1,860.4
2018	14,776.0	660.5	1,824.4	1,536.7	1,247.7	3,422.8	921.9	1,545.5	1,787.9	1,828.7
2019	15,073.4	694.5	1,883.5	1,573.9	1,272.1	3,411.6	932.8	1,577.1	1,865.4	1,862.5

Nota/Note:

<sup>1</sup> Pekerjaan dikelaskan mengikut klasifikasi "Piawai Pengelasan Pekerjaan, Malaysia (MASCO) 2013". Kategori pekerjaan adalah seperti berikut:

Occupation is classified according to the "Malaysia Standard Classification of Occupations (MASCO) 2013". Category of occupation are as follows:

- |  |   |
|--|---|
| <p><b>1</b> <b>Pengurus</b><br/><i>Managers</i></p> <p><b>2</b> <b>Profesional</b><br/><i>Professionals</i></p> <p><b>3</b> <b>Juruteknik dan profesional bersekutu</b><br/><i>Technicians and associate professionals</i></p> <p><b>4</b> <b>Pekerja sokongan perkeranian</b><br/><i>Clerical support workers</i></p> <p><b>5</b> <b>Pekerja perkhidmatan dan jualan</b><br/><i>Service and sales workers</i></p> | <p><b>6</b> <b>Pekerja mahir pertanian, perhutanan, penternakan dan perikanan</b><br/><i>Skilled agricultural, forestry, livestock and fishery workers</i></p> <p><b>7</b> <b>Pekerja kemahiran dan pekerja pertukangan yang berkaitan</b><br/><i>Craft and related trades workers</i></p> <p><b>8</b> <b>Operator mesin dan loji, dan pemasang</b><br/><i>Plant and machine-operators and assemblers</i></p> <p><b>9</b> <b>Pekerja asas</b><br/><i>Elementary occupations</i></p> |
|--|---|