



**PRIME MINISTER'S DEPARTMENT  
DEPARTMENT OF STATISTICS MALAYSIA**

**PRESS RELEASE  
CURRENT POPULATION ESTIMATES, MALAYSIA, 2022**

**POPULATION SIZE AND ANNUAL POPULATION GROWTH RATE**

The total population of Malaysia in 2022 is estimated at 32.7 million as compared to 32.6 million in 2021 with an annual population growth rate of 0.2 percent. The decline in population growth rate is due to the lower number of Non-Citizens from 2.6 million (2021) to 2.4 million (2022).

This is in line with the restriction in international travel by countries during the spread of the COVID-19 pandemic worldwide in 2020 and 2021. The Citizens population increased from 30.0 million in 2021 to 30.2 million in 2022 with the growth rate decreasing from 0.8 per cent to 0.7 per cent over the same period.

**Table 1: No. of population and annual population growth rate by state, 2021-2022**

State	2021		2022 <sup>a</sup>	
	No. of population (Million)	Growth rate (%)	No. of population (Million)	Growth rate (%)
Johor	4.0	0.3	4.0	0.1
Kedah	2.2	0.9	2.2	0.9
Kelantan	1.8	1.1	1.8	0.9
Melaka	1.0	0.6	1.0	0.3
N.Sembilan	1.2	0.3	1.2	0.4
Pahang	1.6	0.6	1.6	0.7
Perak	2.5	0.8	2.5	0.2
Perlis	0.3	0.9	0.3	0.8
Pulau Pinang	1.7	-0.0	1.7	-0.1
Sabah	3.4	-0.2	3.4	-0.6
Sarawak	2.5	0.5	2.5	0.2
Selangor	7.0	0.3	7.0	0.3
Terengganu	1.2	1.8	1.2	1.4
W.P. Kuala Lumpur	2.0	-0.9	1.9	-1.0
W.P. Labuan	0.1	0.9	0.1	0.9
W.P. Putrajaya	0.1	5.4	0.1	4.3

<sup>a</sup> Estimates

## **POPULATION BY SEX**

### **Males outnumbered females**

In 2022, the male population exceeds the female population at 17.0 million and 15.7 million respectively. The gender ratio for overall population is 109 males for every 100 females. For the period 2021-2022, the gender ratio for Citizens remains at 103 and Non-Citizens 227 males for every 100 females respectively. The higher ratio of males is attributed to the higher number of males for non citizens.

## **AGE STRUCTURE**

### **The Older age population in Malaysia is increasing every year**

The composition of the population aged 0-14 years (young age) in 2022 decreased to 23.2 percent as compared to 23.6 percent in 2021. Meanwhile, the composition of the population aged 15-64 years (working age) increased from 69.4 percent in 2021 to 69.5 percent in 2022. The decline in this working age group is due to the composition of male foreign workers for Non-citizens. The percentage of the population aged 65 and over (old age) increased from 7.0 percent to 7.3 percent for the same period. Based on the United Nations definition, Malaysia has become an ageing society. In addition, the median age also increased from 30.1 years in 2021 to 30.4 years in 2022.

## **MAJOR ETHNIC GROUP COMPOSITION**

Of the 30.2 million citizens, the composition of Bumiputera increased by 0.3 percentage points to 69.9 percent in 2022 as compared to 69.6 percent in 2021. However, the composition of the Chinese and Indian population decreased to 22.8 percent (2021: 23.0%) and 6.6 percent (2021: 6.7%) respectively. Others remained at 0.7 percent.

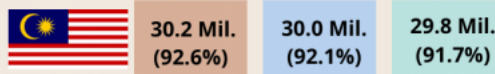
## **POPULATION BY STATE**

The three states with the highest population composition in 2022 are Selangor (21.6%), followed by Johor (12.3%) and Sabah (10.4%). On the other hand, W.P. Labuan and W.P. Putrajaya recorded the lowest population composition at 0.3 percent and 0.4 percent respectively. However, W. P. Putrajaya recorded the highest annual population growth rate for the period 2021-2022 which is 4.3 percent. For the first time, the population of Melaka surpassed 1.0 million mark in 2021.

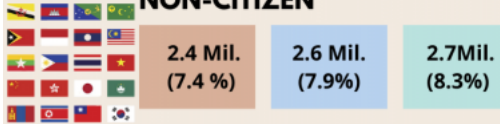
On average, Malaysia has a population density of 99 people per square kilometer. W.P Kuala Lumpur has the highest population density with 8,045 people per square kilometer, followed by W.P. Putrajaya (2,418) and Penang (1,656). Meanwhile, Sarawak has the lowest population density with 20 people per square kilometer, followed by Pahang (45) and Sabah (46).

## CURRENT POPULATION ESTIMATES, MALAYSIA 2022

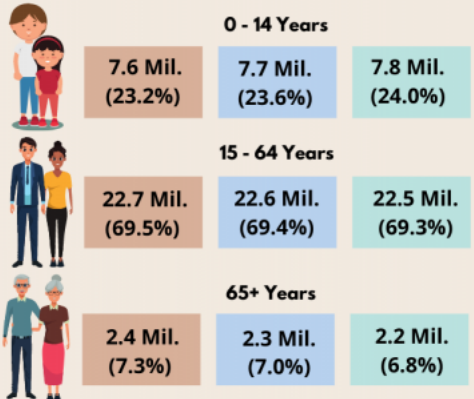
### CITIZEN



### NON-CITIZEN

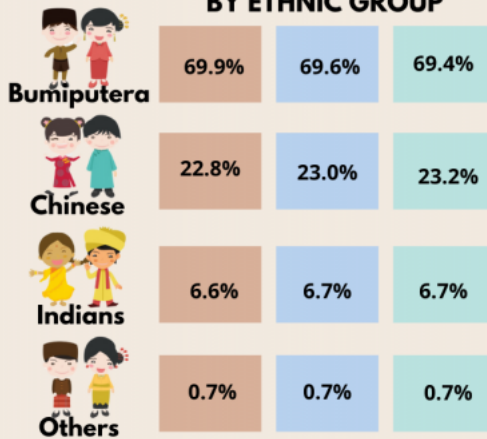


### POPULATION BY AGE GROUP



Median age increased from 30.4 years in 2022

### PERCENTAGE OF CITIZEN BY ETHNIC GROUP



Note:

<sup>e</sup> Estimates

The added total may differ due to rounding



2022<sup>e</sup>  
2021  
2020

### MALAYSIA

32.7 Mil.  
32.6 Mil. 32.4 Mil.

### ANNUAL POPULATION GROWTH RATE

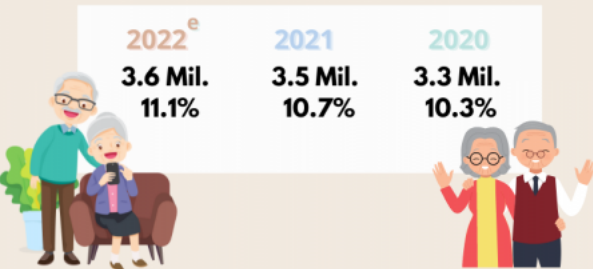
0.2%



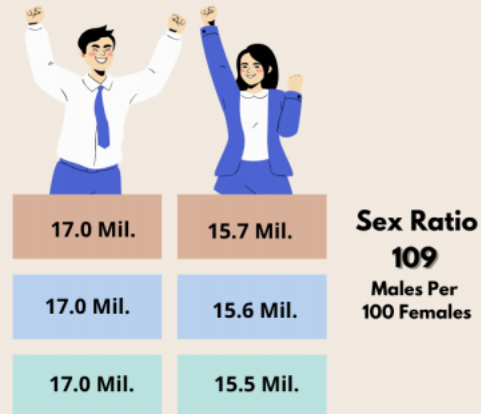
### POPULATION OF MALAYSIA



### POPULATION AGED 60 YEARS AND OVER



### POPULATION BY SEX



Source : Current Population Estimates, Malaysia 2022  
Department of Statistics Malaysia (DOSM)

\*Notes:

e Estimates

The added total may differ due to rounding

**Released By:**

**THE OFFICE OF CHIEF STATISTICIAN MALAYSIA  
DEPARTMENT OF STATISTICS MALAYSIA**

**29 July 2022**

**Contact person:**

**Mohd Yusrizal Ab Razak**

Public Relation Officer

Strategic Communication and International Division

Department of Statistics, Malaysia

Tel : +603-8885 7942

Fax : +603-8888 9248

Email : yusrizal.razak[at]dosm.gov.my