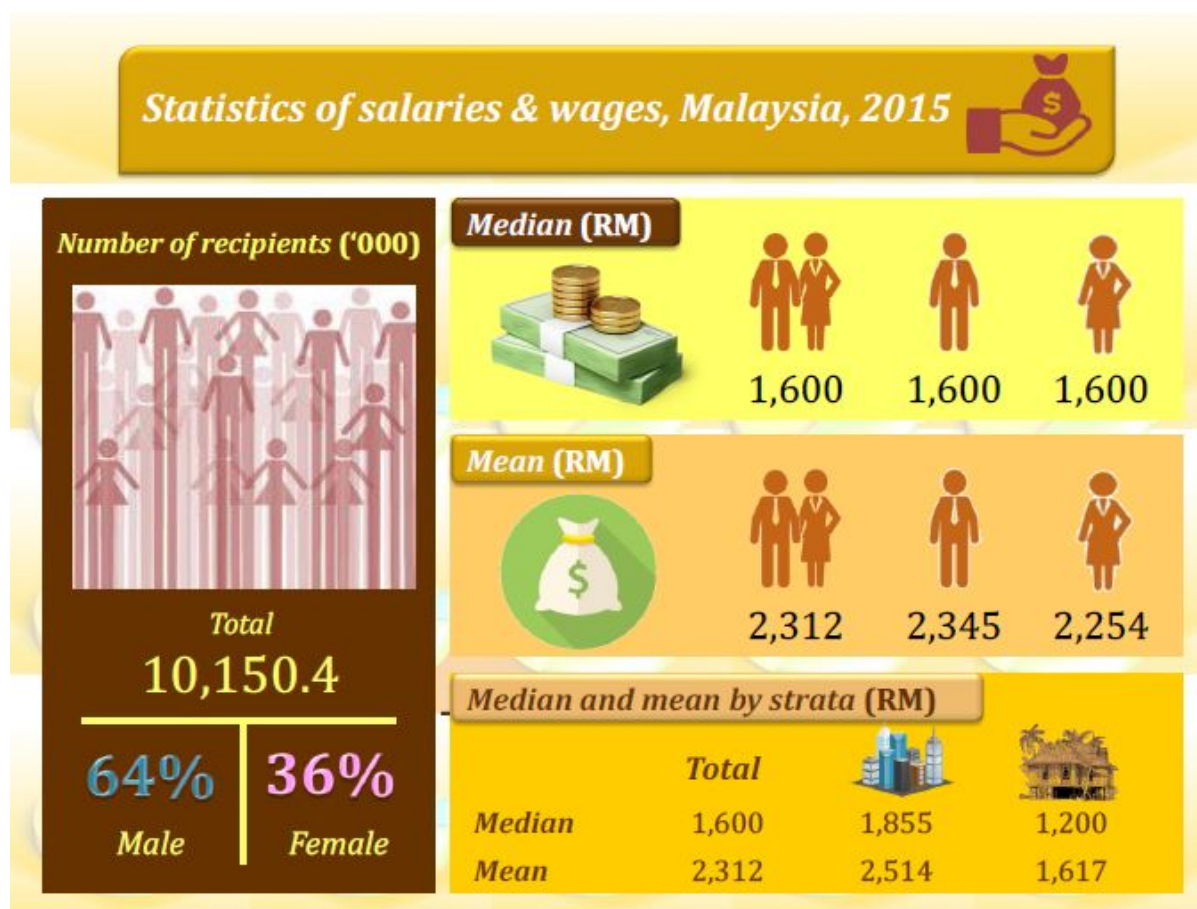




PRESS RELEASE
SALARIES & WAGES SURVEY REPORT, MALAYSIA, 2015

Chart 1: Statistics of salaries & wages, Malaysia, 2015



The Salaries & Wages Survey is conducted by the Department of Statistics, Malaysia every year through household approach to obtain information of monthly salaries & wages for paid employees in the public and private sectors from the principal occupation. Salaries & Wages Survey is carried out with probability sampling via personal interview comprising citizens and non-citizens in urban and rural areas for every state in Malaysia. Paid employee is defined in this survey as a person who works for at least six hours a day or 20 days a month. The total number of paid employees in 2015 is 10.2 million persons.

KEY FINDINGS

Salaries & Wages Survey Report is an annual publication which presents the main indicators of salaries & wages which are the median and mean monthly salaries & wages by demographic and socioeconomic characteristics namely sex, age group, educational attainment, highest certificate obtained, urban and rural strata, state, occupation and industry.

Median and mean monthly salaries & wages of employees

The median monthly salaries & wages received in 2015 increased 6.5 per cent to RM1,600 compared to RM1,500 in 2014. Meanwhile, the mean monthly salaries & wages increased to RM2,312 compared with RM2,193 in the previous year with the annual growth rate of 5.3 per cent.

Table 1: Median and mean monthly salaries & wages of employees, Malaysia, 2014^r - 2015

| Year | Number of Recipients ('000) | Median (RM) | Mean (RM) |
|-------------------|-----------------------------|-------------|-----------|
| 2014 ^r | 10,146.6 | 1,500 | 2,193 |
| 2015 | 10,150.4 | 1,600 | 2,312 |




CAGR (%) 6.5 CAGR (%) 5.3

^r Updated
CAGR Compounded annual growth rate (%)

Monthly salaries & wages of employees by sex

In 2015, the median monthly salaries & wages for male and female employees were unchanged at RM1,600. The median monthly salaries & wages for both male and female increased 5.7 per cent and 6.5 per cent respectively, compared to the previous year. The mean monthly salaries & wages for male employees (RM2,345) was higher than female employees (RM2,254).

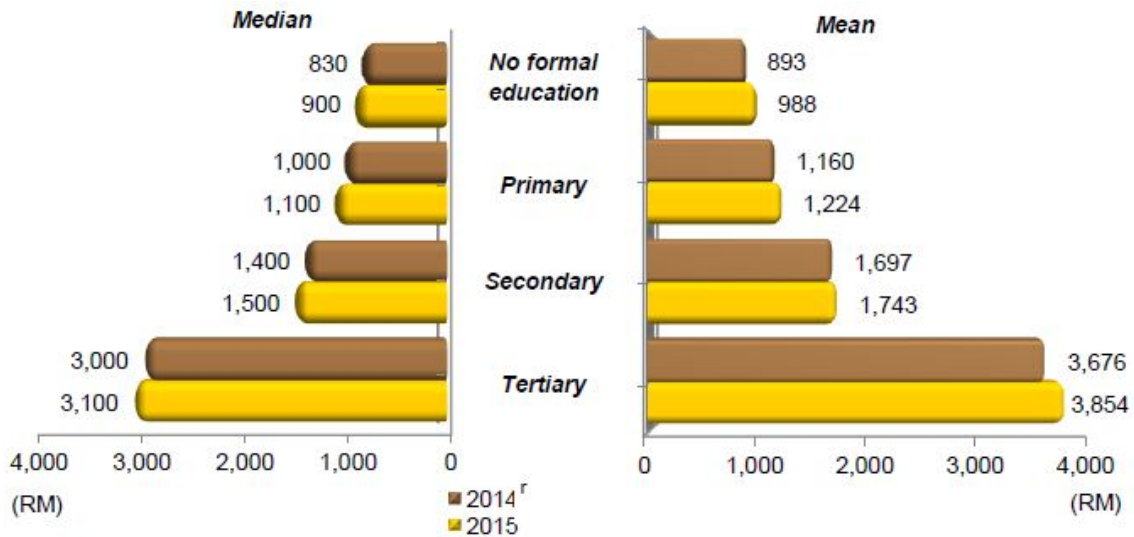
Table 2: Median and mean monthly salaries & wages of employees by sex, Malaysia, 2014^r - 2015

| Sex | 2014 ^r | | 2015 | | CAGR | |
|---|-------------------|-----------|-------------|-----------|------------|----------|
| | Median (RM) | Mean (RM) | Median (RM) | Mean (RM) | Median (%) | Mean (%) |
|  | 1,500 | 2,193 | 1,600 | 2,312 | 6.5 | 5.3 |
|  | 1,511 | 2,232 | 1,600 | 2,345 | 5.7 | 4.9 |
|  | 1,500 | 2,125 | 1,600 | 2,254 | 6.5 | 5.9 |

Monthly salaries & wages of employees by educational attainment

The monthly salaries & wages of the employees with tertiary education was two times higher than that of employees with secondary education in 2014 and 2015. In 2015, the median monthly salaries & wages of employees with tertiary education was RM3,100 compared to employees with secondary education of RM1,500. Meanwhile, the mean monthly salaries & wages of employees with tertiary education was RM3,854 and secondary RM1,743. Employees with primary education recorded the median monthly salaries & wages of RM1,100 and mean RM1,224.

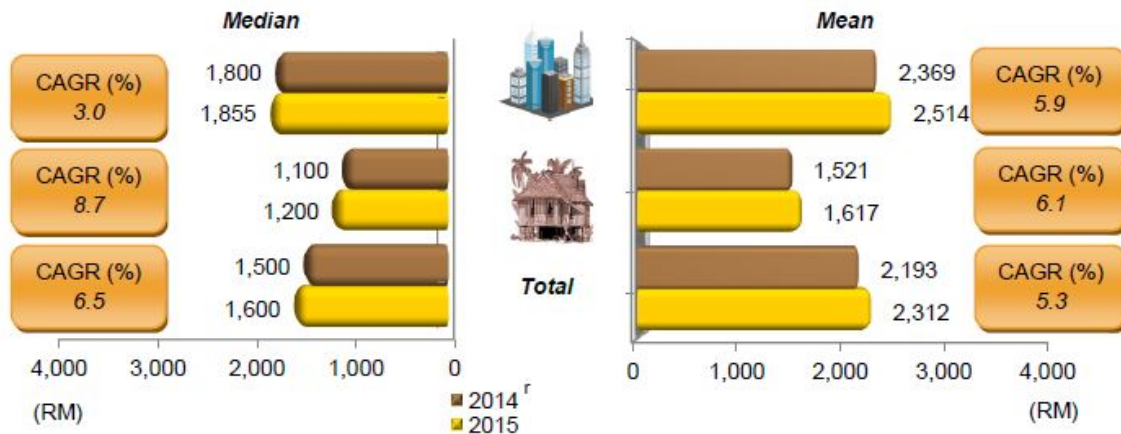
Chart 2: Median and mean monthly salaries & wages of employees by educational attainment, Malaysia, 2014^r - 2015



Monthly salaries & wages of employees by strata

In 2015, the monthly salaries & wages of employees in the urban area was higher compared to rural area. However, in terms of growth, the monthly salaries & wages in the rural area was higher than the urban area. The median monthly salaries & wages of employees in the urban area rose 3.0 per cent to RM1,855. While the rural area grew 8.7 per cent to RM1,200. The mean monthly salaries & wages of employees also recorded an increase of 5.9 per cent in the urban area and 6.1 per cent in the rural area.

Chart 3: Median and mean monthly salaries & wages of employees by strata, Malaysia, 2014^r - 2015



The detailed information regarding this report can be accessed through [eStatistik](#) application in the website of Department of Statistics Malaysia at www.dosm.gov.my.

Released By:

**THE OFFICE OF CHIEF STATISTICIAN MALAYSIA
DEPARTMENT OF STATISTICS, MALAYSIA**
27 May 2016

Contact person:

Ho Mei Kei
Public Relation Officer
Corporate and User Services Division
Department of Statistics, Malaysia
Tel : +603-8885 7942
Fax : +603-8888 9248
Email : mkho[at]stats.gov.my