



DEPARTMENT OF STATISTICS MALAYSIA

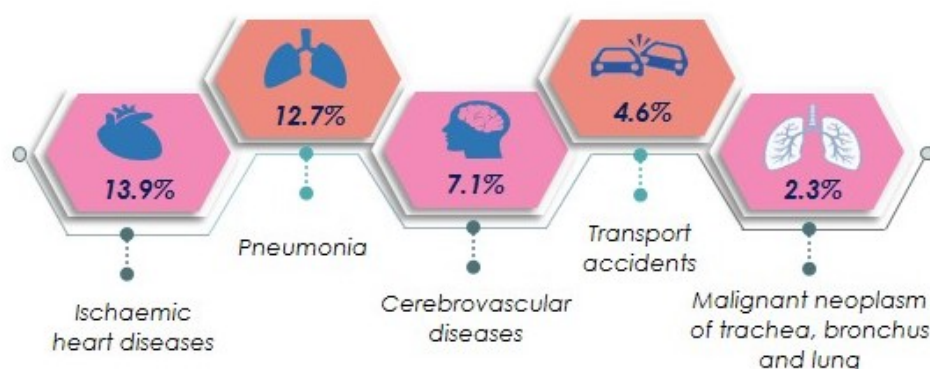
PRESS RELEASE

STATISTICS ON CAUSES OF DEATH, MALAYSIA, 2018

i. Principal Causes of Death

Ischaemic heart diseases remains as the principal causes of death

In 2017, the per cent of deaths caused by Ischaemic heart diseases was 13.9 per cent, followed by Pneumonia (12.7%), Cerebrovascular diseases (7.1%), Transport accidents (4.6%) and Malignant neoplasm of trachea, bronchus and lung (2.3%).



ii. Principal Causes of Death by Sex

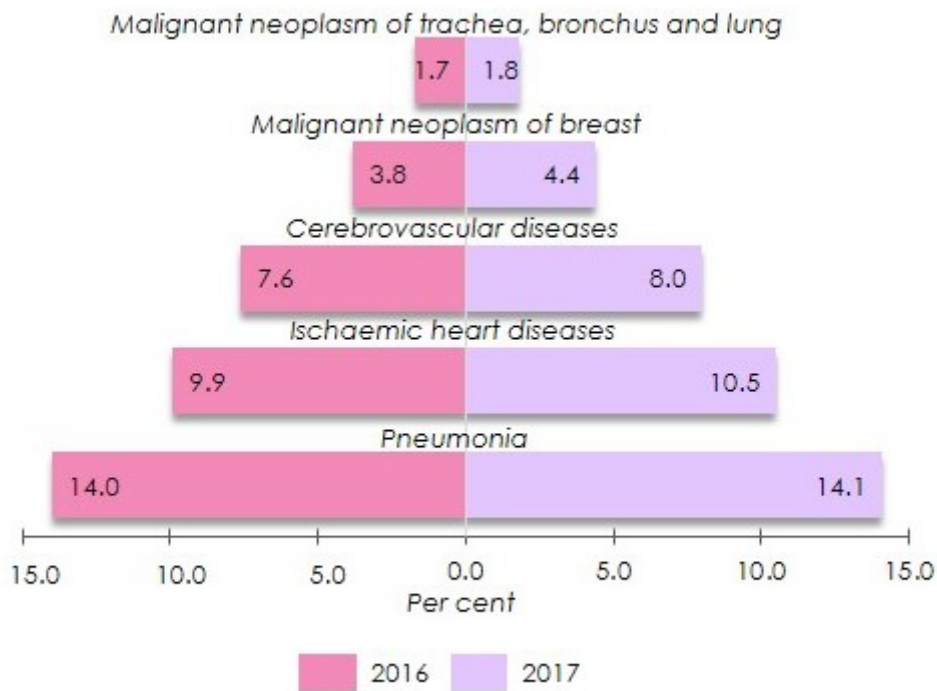
• The five principal causes of death for males unchanged

Ischaemic heart diseases recorded the highest percentage of 16.0 per cent, followed by Pneumonia (11.8%), Transport accidents (6.5%), Cerebrovascular diseases (6.4%) and Malignant neoplasm of trachea, bronchus & lung (2.7%).



- **Malignant neoplasm of breast recorded the highest change in percentage points for female**

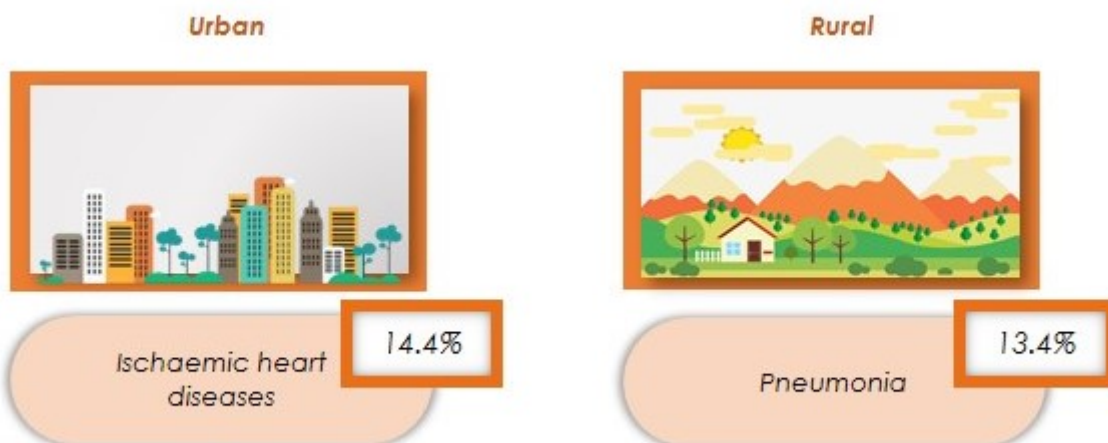
Malignant neoplasm of breast for female recorded the highest changes of 0.6 percentage points from 3.8 per cent (2016) to 4.4 per cent (2017).



iii. Causes of Death by Stratum

Ischaemic heart diseases and pneumonia are the principal causes of death by stratum

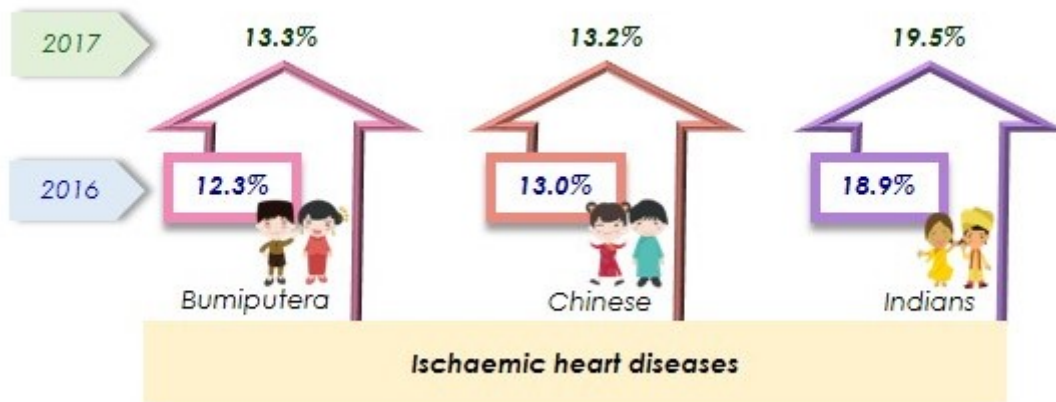
The principal causes of death in urban areas was Ischaemic heart diseases (14.4%) while Pneumonia (13.4%) was the principal causes of death in rural areas.



iv. Causes of Death by Major Ethnic Group

Ischaemic heart diseases is the principal causes of death for all major ethnic groups

Bumiputera recorded the highest increase of 1.0 percentage point from 12.3 per cent (2016) to 13.3 per cent (2017).

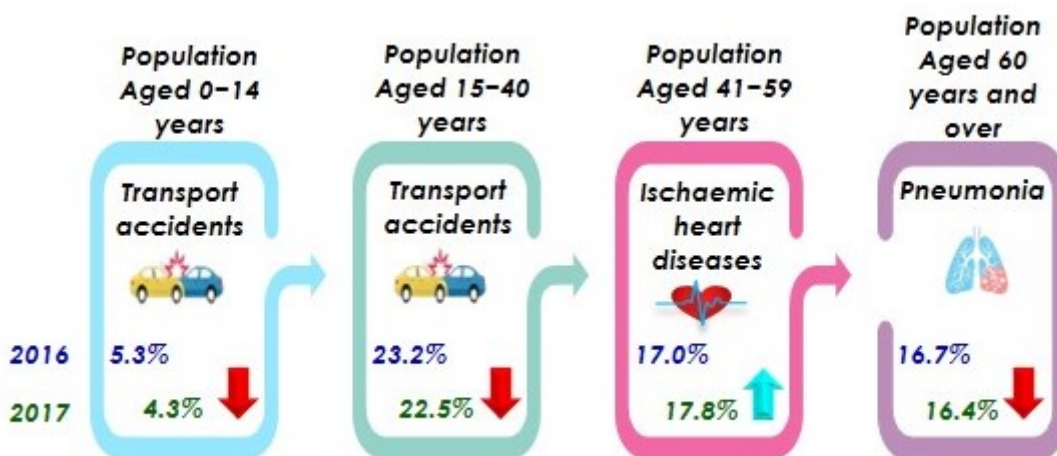


v. Causes of Death by Selected Age group

- Population aged 15 - 40 years

Transport accidents was the principal causes of death for the youth

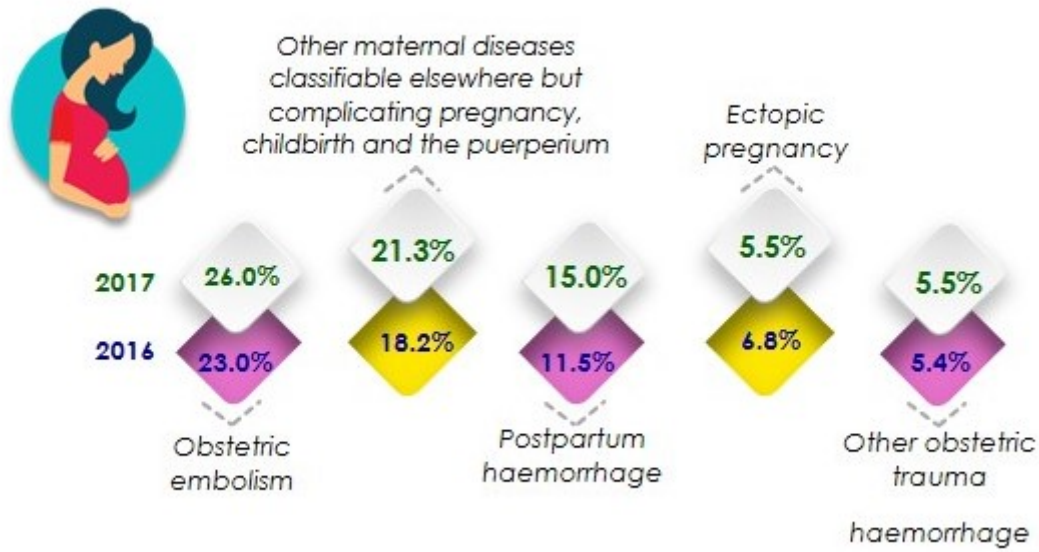
Transport accidents was the principal causes of death for population aged 15-40 years in 2017. The percentage of deaths caused by Transport accidents in 2017 was 22.5 per cent, declined 0.7 percentage points as compared to 2016.



vi. Principal Causes of Maternal Death

Obstetric embolism remains the principal causes of maternal death

Obstetric embolism was the main principal causes of death for maternal death. In 2017, the percentage of deaths caused by Obstetric embolism were 26.0 per cent.





ISCHAEMIC HEART DISEASES 2017

remained as principal causes of death

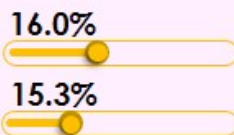
Causes of death due to Ischaemic heart diseases has increased



37 deaths per day due to Ischaemic heart diseases as compared to 24 deaths in 2007

Highest percentage increase for causes of death

Male



Ischaemic heart diseases

increased **0.7** percentage points as compared to 2016

Female



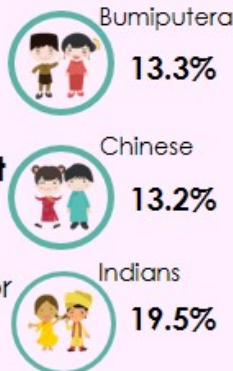
Malignant neoplasm of breast

increased **0.6** percentage points as compared to 2016



Ischaemic heart diseases

is the principal causes of death for major ethnic groups



Transport accidents is the principal causes of death for the youth (15-40 years)



26.0%
Obstetric embolism is the principal causes of maternal death

Note: The analysis is based on medically certified causes of death

Source: Statistics on Causes of Death, Malaysia, 2018

Released By:

**DATO' SRI DR. MOHD UZIR MAHIDIN
CHIEF STATISTICIAN MALAYSIA
DEPARTMENT OF STATISTICS, MALAYSIA**

31 October 2018

Contact person:

Ho Mei Kei
Public Relation Officer
Strategic Communication and International Division
Department of Statistics, Malaysia
Tel : +603-8885 7942
Fax : +603-8888 9248
Email : mkho[at]dosm.gov.my