



DEPARTMENT OF STATISTICS MALAYSIA

PRESS RELEASE

DEMOGRAPHIC STATISTICS THIRD QUARTER 2019, MALAYSIA

Department of Statistics Malaysia  
<https://www.dosm.gov.my>

@StatsMalaysia

WRC 2019

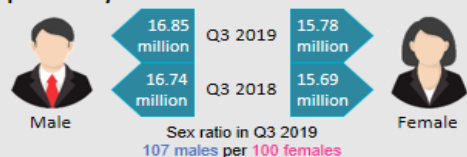
75

DEMOGRAPHIC STATISTICS, MALAYSIA  
 THIRD QUARTER 2019

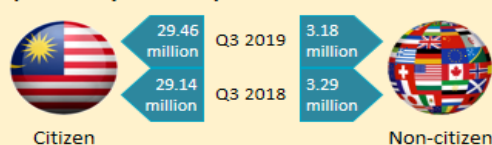
POPULATION

Malaysia's population for the **third quarter 2019** was estimated at **32.63 million**, increased by **0.6 per cent** as compared to the third quarter 2018 (32.43 million).

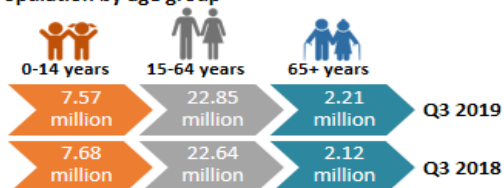
Population by sex



Population by citizenship



Population by age group



LIVE BIRTHS

**124,150 live births** were recorded in the **third quarter 2019**, decreased by **3.0 per cent** as compared to the third quarter 2018 (127,956).

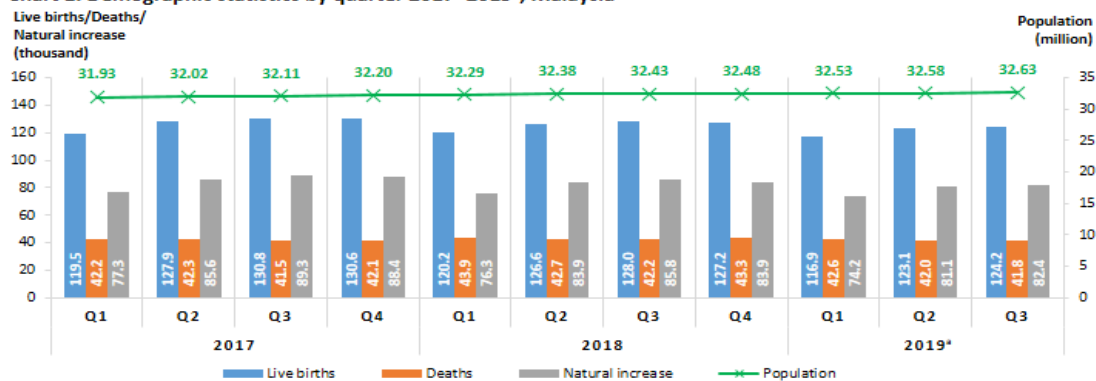


DEATHS

**41,772 deaths** were recorded in the **third quarter 2019**, decreased by **0.9 per cent** as compared to the third quarter 2018 (42,156).



Chart 1: Demographic statistics by quarter 2017–2019<sup>a</sup>, Malaysia



Source: Demographic Statistics Third Quarter 2019, Malaysia  
 Department of Statistics Malaysia

**Exhibit 1: Demographic statistics by state, third quarter 2019<sup>P</sup>, Malaysia**

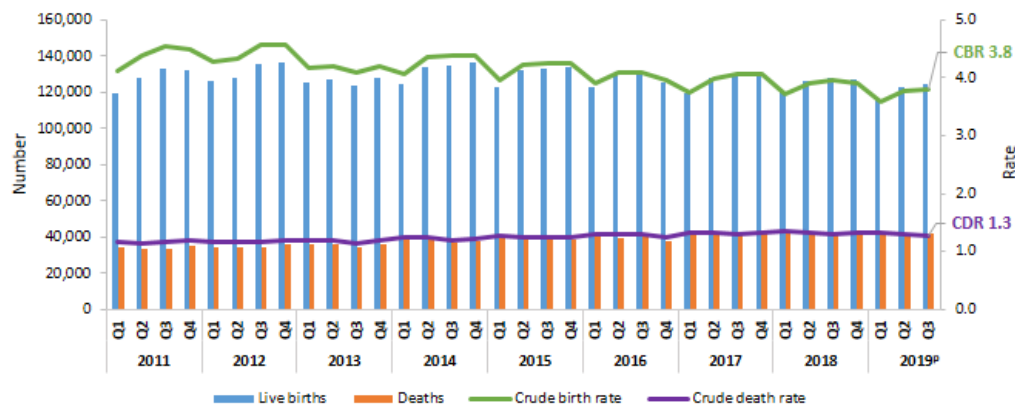
State	Population	Live Births	Deaths
Johor	3,768.2*	15,031	5,617
Negeri Sembilan	1,132.1*	4,479	1,766
Pulau Pinang	1,777.6*	5,180	2,682
Terengganu	1,250.1*	6,847	1,658
Kedah	2,185.0*	8,864	3,590
Pahang	1,677.1*	6,643	2,224
Sabah	3,904.7*	13,401	2,773
W.P. Kuala Lumpur	1,778.4*	6,575	2,335
Kelantan	1,892.0*	9,519	2,660
Perak	2,514.3*	8,369	4,563
Sarawak	2,818.1*	9,290	3,309
W.P. Labuan	99.4*	427	54
Melaka	932.7*	3,654	1,374
Perlis	254.6*	1,060	501
Selangor	6,541.9*	24,246	6,609
W.P. Putrajaya	105.4*	565	57

Legend: Population (Group of people icon), Live Births (Baby icon), Deaths (Coffin icon). Note: \* thousand

**Table 1: Number and percentage change of live births and deaths, 2018 & 2019<sup>P</sup>, Malaysia**

Indicator	Month	2018		2019 <sup>P</sup>	
		Number	Year-on-year change (%)	Number	Year-on-year change (%)
Live births	July	42,355	-1.4	40,971	-3.3
	August	42,653	-2.3	39,725	-6.9
	September	42,948	-2.7	43,454	1.2
	July-September	127,956	-2.1	124,150	-3.0
Deaths	July	14,461	2.1	14,429	-0.2
	August	14,278	9.1	13,852	-0.3
	September	13,417	-0.1	13,491	0.6
	July-September	42,156	3.6	41,772	-0.9

**Chart 2: Live births and deaths (number and rate) by quarter, 2011–2019<sup>P</sup>, Malaysia**



Notes:  
<sup>P</sup> Preliminary.  
 \* The number of live births and deaths refer to preliminary figures. Total population refers to estimates.  
 • Quarterly period: Q1=January–March; Q2=April–June; Q3=July–September; Q4=October–December.  
 • The difference is due to rounding.

**Released By:**

**DATO' SRI DR. MOHD UZIR MAHIDIN  
CHIEF STATISTICIAN MALAYSIA  
DEPARTMENT OF STATISTICS, MALAYSIA**

 [DrUzir\\_Mahidin](#)   [Dr\\_Uzir](#)

**14 November 2019**

**Contact person:**

Rohaida binti Mohamad  
Public Relation Officer  
Strategic Communication and International Division  
Department of Statistics, Malaysia

**Tel** : +603-8885 7942

**Fax** : +603-8888 9248

**Email** : rohaida.mohamad[at]dosm.gov.my