



DEPARTMENT OF STATISTICS MALAYSIA

PRESS RELEASE

Value of gross output of economic sectors covered in reference year 2017 recorded an annual growth rate of 6.5 per cent compared to 2015

Introduction

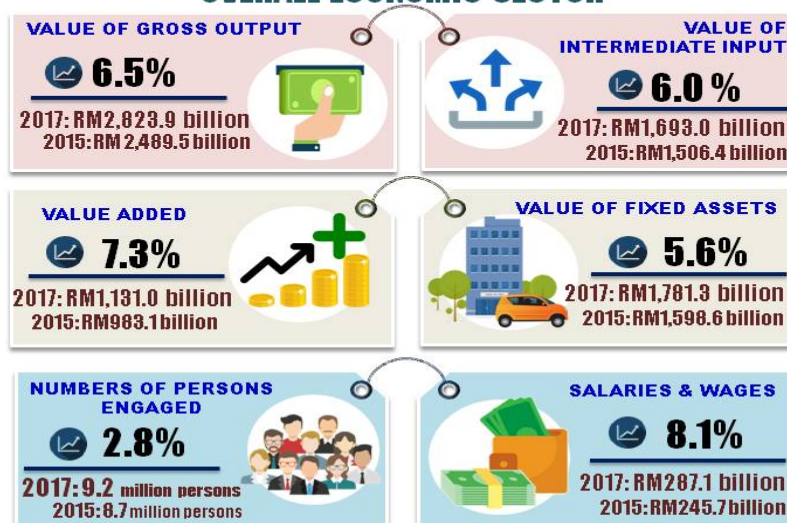
This report presents statistics obtained from the Annual Economic Survey conducted in 2018 for reference year 2017. It comprises of Agriculture, Mining & quarrying, Manufacturing, Construction and Services.

Overall Performance

Annual Economic Survey 2018 reference 2017 reveals that the value of gross output registered an annual growth of 6.5 per cent amounting to RM2,823.9 billion compared to RM2,489.5 billion in 2015. Value added also increased 7.3 per cent per year from RM983.1 billion to RM1,131.0 billion within the same period. The number of persons engaged recorded were 9.2 million persons in 2017 as against 8.7 million in 2015 with salaries & wages paid of RM287.1 billion.



MAIN FINDINGS OVERALL ECONOMIC SECTOR



Annual growth rate 2015-2017

Value of Gross Output

Value of gross output generated in 2017 was RM2,823.9 billion with the highest value recorded by Manufacturing sector of RM1,275.7 billion (45.2%). This was followed by Services (RM1,111.8 billion; 39.4%) and Construction (RM204.4 billion; 7.2%).

Value Added

In 2017, value added recorded was RM1,131.0 billion, an increase of 7.3 per cent annually compared to RM983.1 billion in 2015. Services sector contributed the highest value added of RM596.6 billion with 52.8 per cent contribution followed by Manufacturing (RM294.0 billion; 26.0%) and Mining & quarrying (RM119.8 billion; 10.6%).

Number of Persons Engaged

Number of persons engaged was 9.2 million persons, an increase of 2.8 per cent annually compared to 8.7 million persons in 2015. Services sector provided the highest job opportunities with 5.2 million persons (56.0%), followed by Manufacturing sector with 2.2 million persons (24.0%) and Construction sector with 1.3 million persons (14.4%).

Salaries & Wages




Total salaries & wages disbursed in 2017 was RM287.1 billion, registering an annual growth rate of 8.1 per cent within 2015 and 2017. Services sector paid the highest salaries & wages with RM156.1 billion (54.4%), followed by Manufacturing sector with RM74.9 billion (26.1%) and Construction sector with RM39.2 billion (13.7%).

*Notes:

This data is a preliminary figure. The data will be updated based on the latest available figures and will be published in the final publication.

Released By:

DATO' SRI DR. MOHD UZIR MAHIDIN
CHIEF STATISTICIAN MALAYSIA
DEPARTMENT OF STATISTICS, MALAYSIA

 [DrUzir_Mahidin](#)   [Dr_Uzir](#)

31 January 2019

Contact person:

Ho Mei Kei
Public Relation Officer
Strategic Communication and International Division
Department of Statistics, Malaysia
Tel : +603-8885 7942
Fax : +603-8888 9248
Email : mkho[at]dosm.gov.my