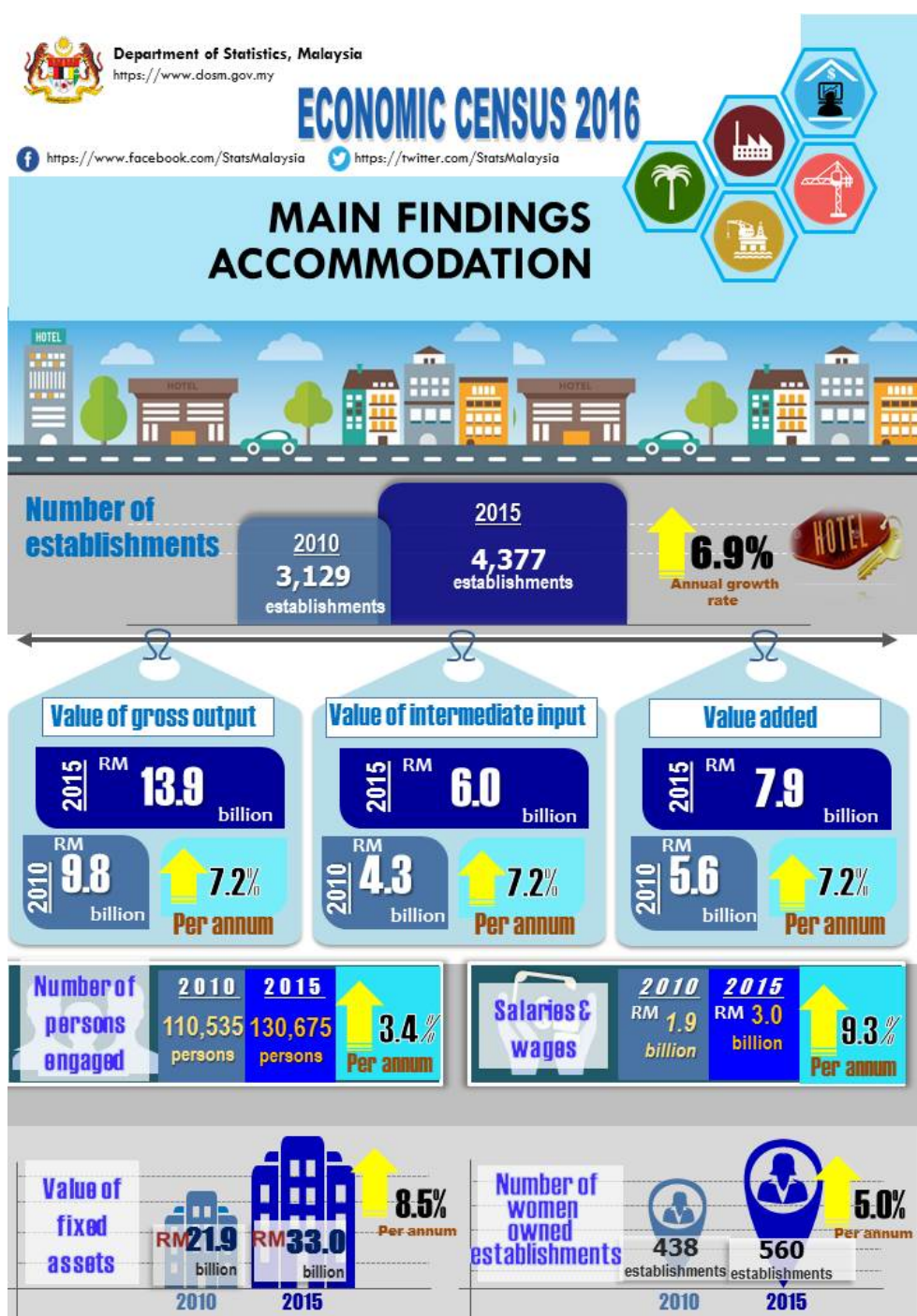




DEPARTMENT OF STATISTICS MALAYSIA

PRESS RELEASE

ECONOMIC CENSUS 2016 - ACCOMMODATION SERVICES



INTRODUCTION

This publication presents statistics on accommodation services obtained from the Economic Census 2016 for reference year 2015. Accommodation services which encompasses hotels (including resort hotels), apartment hotels, budget hotels, chalets and rest house, guest house, hostel, bed & breakfast and camping grounds.

PERFORMANCE OF ACCOMMODATION SERVICES

The results of the census showed that total number of accommodation establishments increased to 4,377 compared to 3,129 establishments in 2010. This represents an increase of 6.9 per cent per annum.

Value of gross output generated amounted to RM13.9 billion compared to RM9.8 billion in 2010. This number registered an increase 7.2 per cent per annum. In line with value of gross output, the value added recorded an increased of 7.2 per cent per annually posted at RM7.9 billion.

Number of persons engaged in accommodation services was 130,765 persons, representing a growth of 3.4 per cent compared to 2010. The accommodation industry engaged 121,963 persons with percentage share 93.3 per cent of paid full-time employees. In addition, there were 5,706 persons (4.4%) categorised as part-time employees while 3,006 persons (2.3%) are working proprietors and unpaid family workers. Total salaries & wages paid to employees in 2015 was RM3.0 billion compared to RM1.9 billion in 2010. This number recorded an increase of 9.3 per cent per annum.

WOMEN-OWNED ESTABLISHMENTS

In 2015, there were 560 women-owned establishments in accommodation services which comprised of 12.8 per cent from the total establishments with annual growth rate 5.0 per cent.

Released By:

**THE OFFICE OF CHIEF STATISTICIAN MALAYSIA
DEPARTMENT OF STATISTICS, MALAYSIA
31 July 2017**

Contact person:

Ho Mei Kei
Public Relation Officer
Corporate and User Services Division
Department of Statistics, Malaysia
Tel : +603-8885 7942
Fax : +603-8888 9248
Email : mkho[at]stats.gov.my