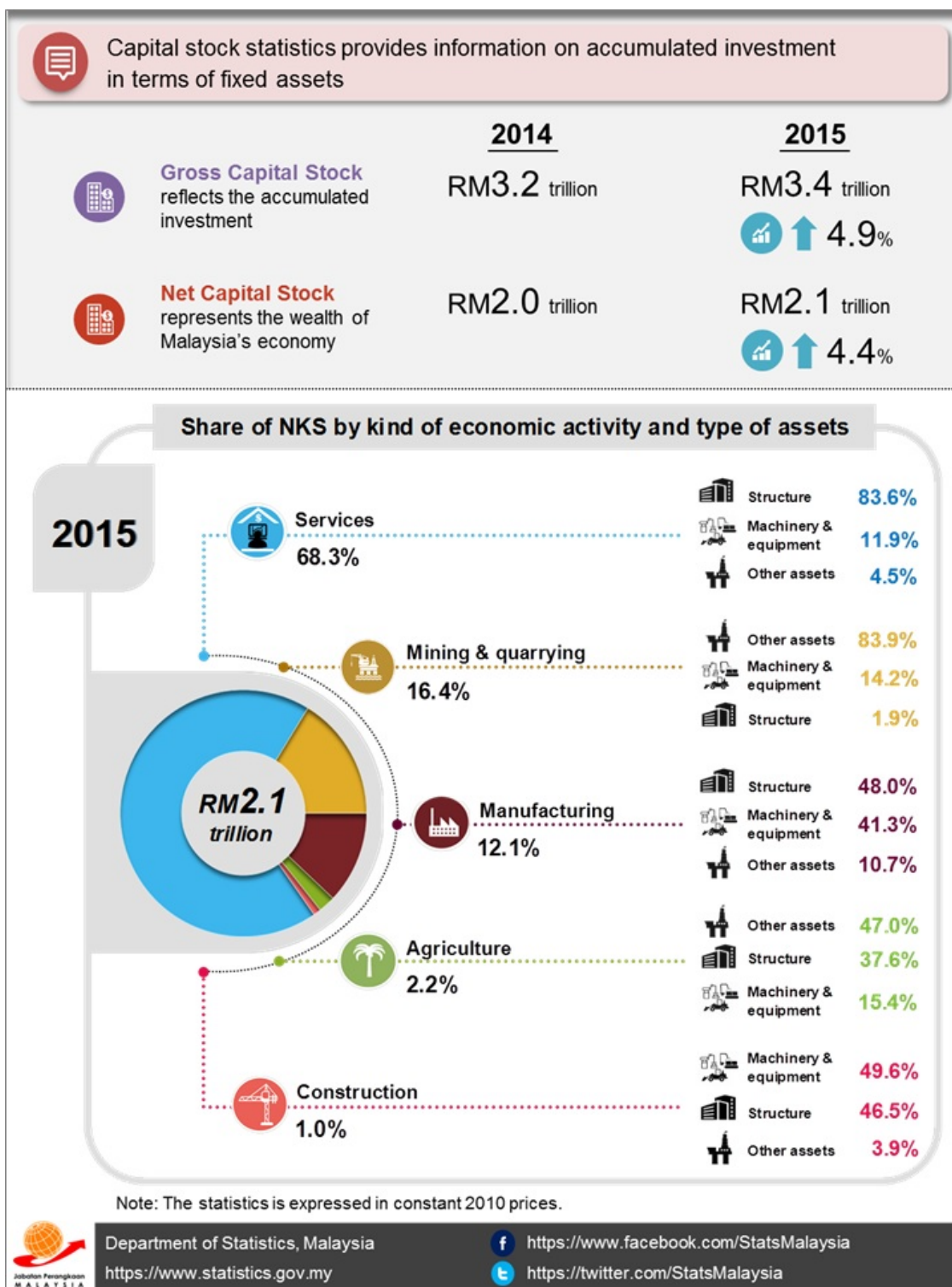


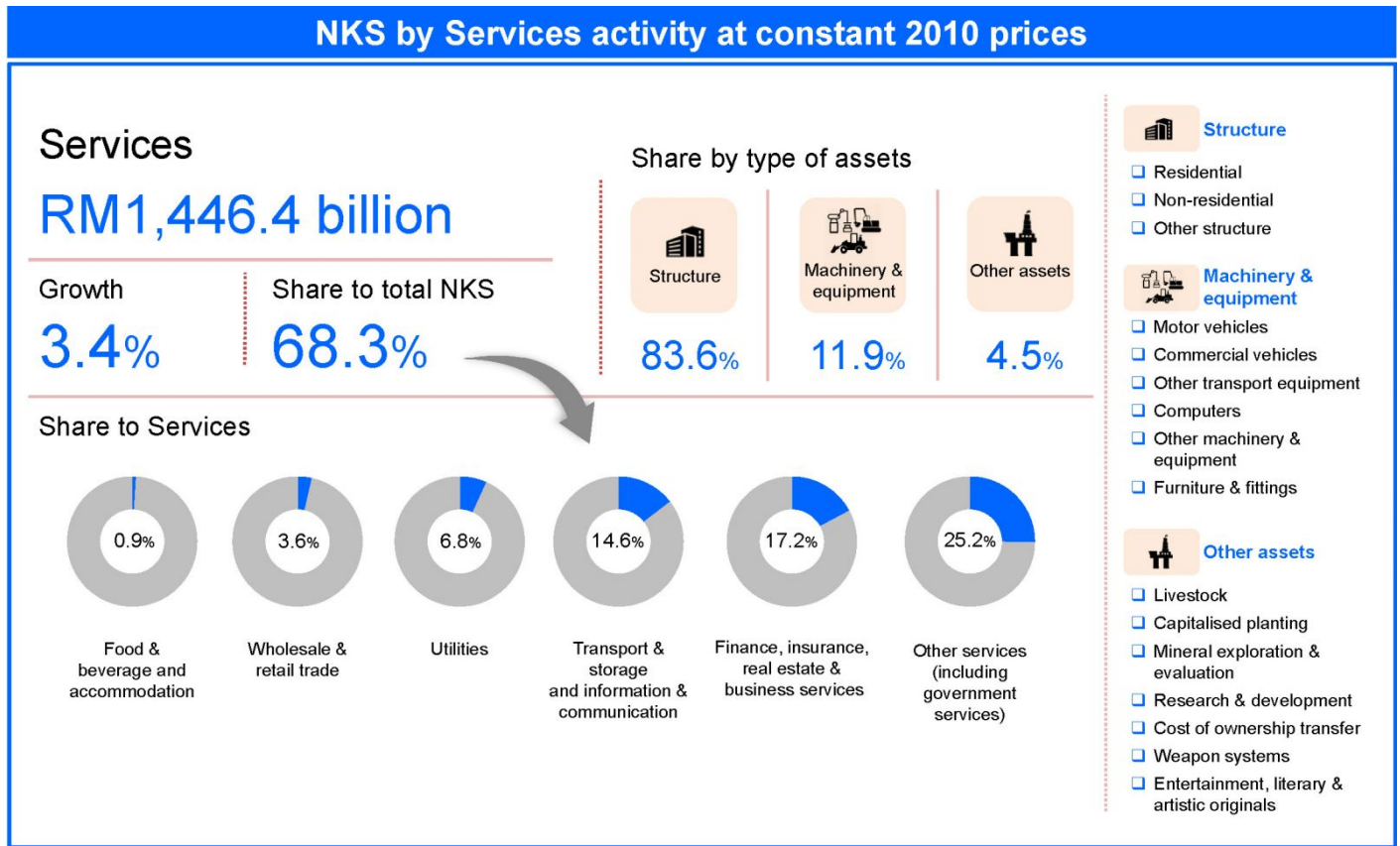


PRESS RELEASE

THE NATION'S NET FIXED ASSETS ROSE RM2.1 TRILLION IN 2015



Net Capital Stock (NKS) which represents the nation's economic wealth in terms of fixed assets expanded to RM2.1 trillion with a growth of 4.4 per cent. Services continued to drive capital stock with a share of 68.3 per cent. By type of assets, structure remains as the main contributor to the Services with a share of 83.6 per cent followed by machinery & equipment (11.9%).



Released By:

**THE OFFICE OF CHIEF STATISTICIAN MALAYSIA
DEPARTMENT OF STATISTICS, MALAYSIA
09 December 2016**

Contact person:

Ho Mei Kei
Public Relation Officer
Corporate and User Services Division
Department of Statistics, Malaysia
Tel : +603-8885 7942
Fax : +603-8888 9248
Email : mkho[at]stats.gov.my