

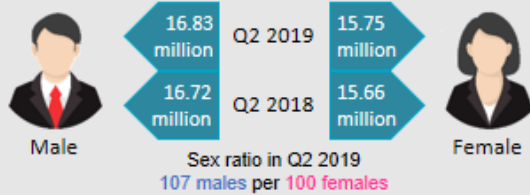


## DEMOGRAPHIC STATISTICS, MALAYSIA SECOND QUARTER 2019

### POPULATION

Malaysia's population for the **second quarter 2019** was estimated at **32.58 million**, **increased by 0.6 per cent** as compared to the second quarter 2018 (32.38 million).

#### Population by sex

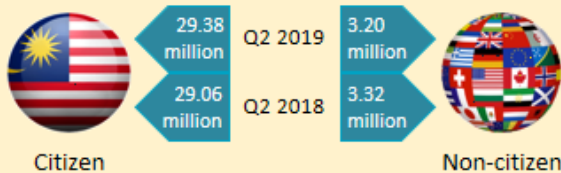


### LIVE BIRTHS

**123,102 live births** were recorded in the **second quarter 2019**, **decreased by 1.7 per cent** as compared to the second quarter 2018 (125,253).

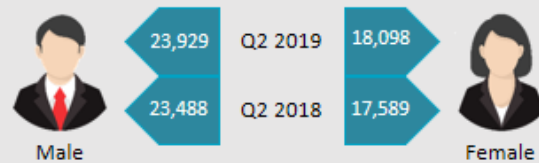


#### Population by citizenship



### DEATHS

**42,027 deaths** were recorded in the **second quarter 2019**, **increased by 2.3 per cent** as compared to the second quarter 2018 (41,077).



#### Population by age group

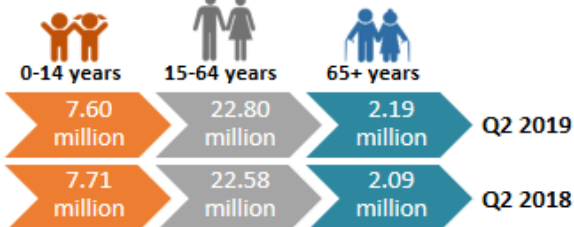
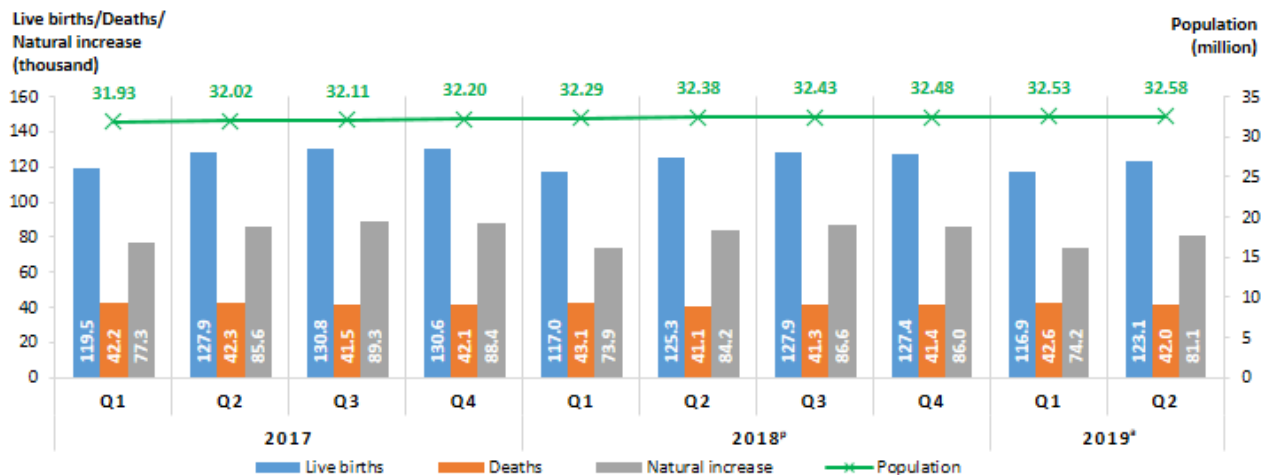


Chart 1: Demographic statistics by quarter 2017–2019<sup>a</sup>, Malaysia



Source: Demographic Statistics Second Quarter 2019, Malaysia  
 Department of Statistics Malaysia

Exhibit 1: Demographic statistics by state, second quarter 2019<sup>a</sup>, Malaysia

State	Population	Live Births	Deaths
Johor	3,764.3*	15,016	5,320
Negeri Sembilan	1,130.3*	4,354	1,744
Pulau Pinang	1,774.6*	5,071	2,738
Terengganu	1,245.7*	6,930	1,811
Kedah	2,180.6*	8,648	3,527
Pahang	1,674.6*	6,504	2,261
Sabah	3,903.4*	13,111	2,734
W.P. Kuala Lumpur	1,780.7*	6,634	2,287
Kelantan	1,885.7*	9,563	2,860
Perak	2,512.1*	8,432	4,699
Sarawak	2,812.8*	8,764	3,375
W.P. Labuan	99.3*	418	104
Melaka	930.7*	3,530	1,302
Perlis	254.4*	1,019	470
Selangor	6,528.4*	24,542	6,741
W.P. Putrajaya	103.8*	566	54

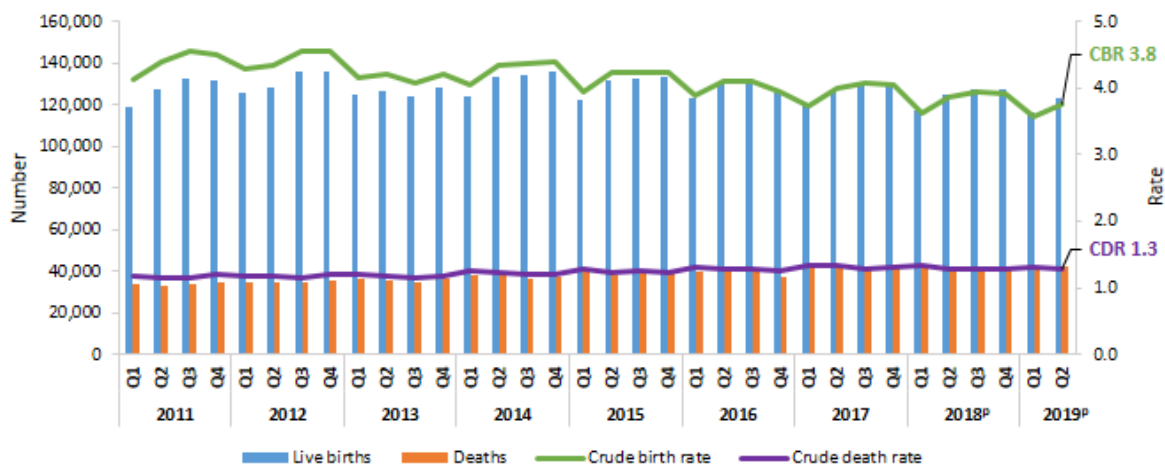
Legend: Population Live Births Deaths

Note: \* thousand

Table 1: Number and percentage change of live births and deaths, 2018<sup>p</sup> & 2019<sup>p</sup>, Malaysia

Indicator		2018 <sup>p</sup>		2019 <sup>p</sup>	
		Number	Year-on-year change (%)	Number	Year-on-year change (%)
Live births	April	41,316	-4.6	39,612	-4.1
	May	42,135	-2.4	41,532	-1.4
	June	41,802	0.9	41,958	0.4
	April-June	125,253	-2.1	123,102	-1.7
Deaths	April	13,756	3.8	13,692	-0.5
	May	13,882	-1.4	14,000	0.9
	June	13,439	-6.2	14,335	6.7
	April-June	41,077	-1.4	42,027	2.3

Chart 2: Live births and deaths (number and rate) by quarter, 2011–2019<sup>p</sup>, Malaysia






Notes:

- <sup>a</sup> Preliminary.
- <sup>p</sup> The number of live births and deaths refer to preliminary figures. Total population refers to estimates.
- Births and deaths statistics 2018 will be finalised after 24<sup>th</sup> October 2019 and will be published in Vital Statistics, Malaysia, 2019 report.
- Quarterly period: Q1=January–March; Q2=April–June; Q3=July–September; Q4=October–December.
- The difference is due to rounding.

Source: Demographic Statistics Second Quarter 2019, Malaysia  
Department of Statistics Malaysia

**Released By:**

**DATO' SRI DR. MOHD UZIR MAHIDIN  
CHIEF STATISTICIAN MALAYSIA  
DEPARTMENT OF STATISTICS, MALAYSIA**

 [DrUzir\\_Mahidin](#)   [Dr\\_Uzir](#)

**15 August 2019**

**Contact person:**

Rohaida binti Mohamad  
Public Relation Officer  
Strategic Communication and International Division  
Department of Statistics, Malaysia  
**Tel** : +603-8885 7942  
**Fax** : +603-8888 9248  
**Email** : rohaida.mohamad[at]dosm.gov.my