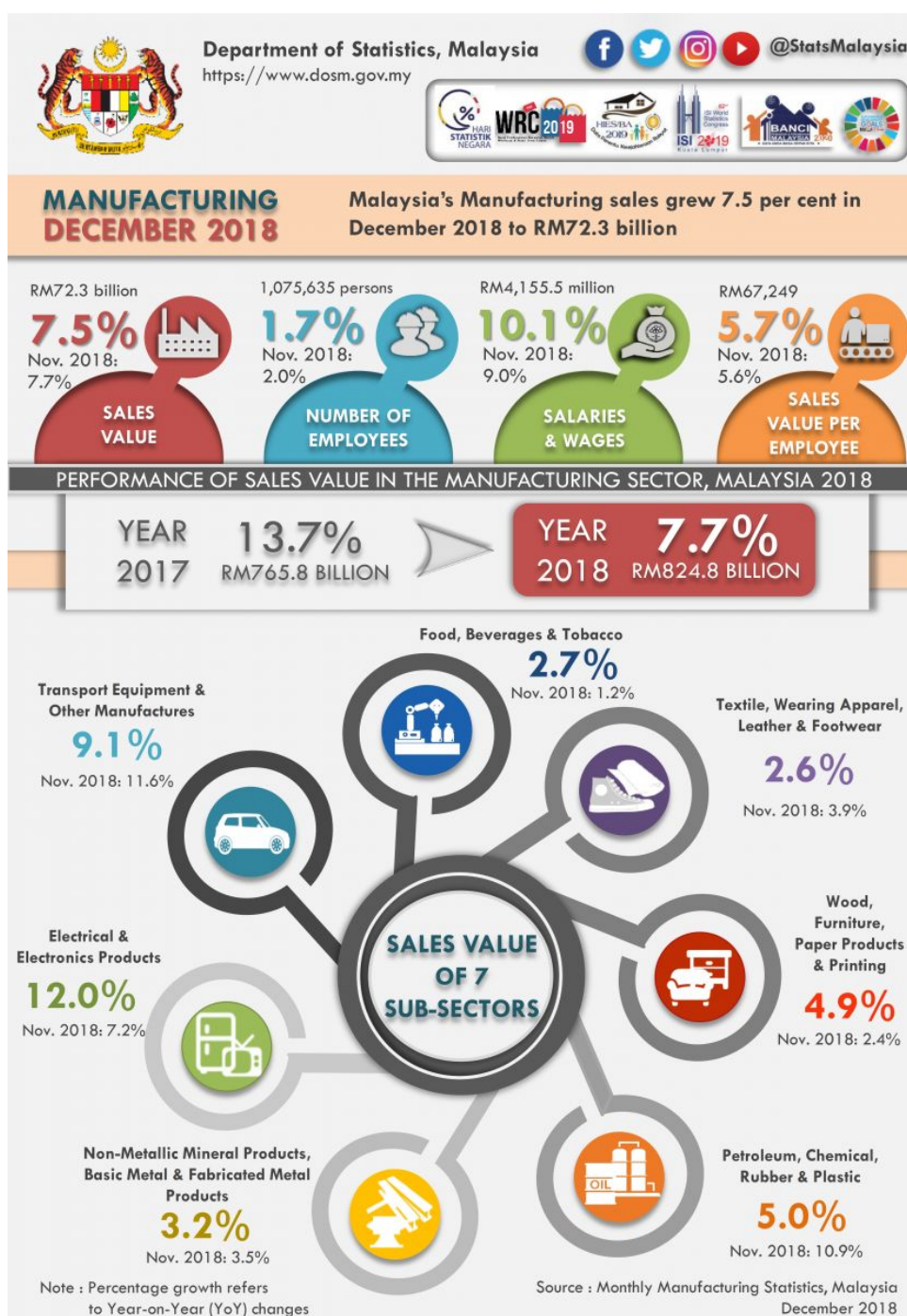




DEPARTMENT OF STATISTICS MALAYSIA

PRESS RELEASE

MONTHLY MANUFACTURING STATISTICS, MALAYSIA
DECEMBER 2018*



HIGHLIGHTS

Malaysia's Manufacturing sales grew 7.5 per cent in December 2018 to RM72.3 billion

Malaysia's December 2018 Manufacturing sales posted an increase of **7.5 per cent**, rising to **RM72.3 billion** as compared to RM67.3 billion reported a year ago. The growth was supported by the increase in Electrical and Electronics Products (**12.0%**), Transport Equipment & Other Manufactures Products (**9.1%**) and Petroleum, Chemical, Rubber and Plastic Products (**5.0%**).

Total employees engaged in the Manufacturing sector in December 2018 was **1,075,635 persons**, an increase of **1.7 per cent** or **18,044 persons** as compared to 1,057,591 persons in December 2017.

Salaries & wages paid rose **10.1 per cent** or **RM381.5 million** to record **RM4,155.5 million**, thus registering an average salaries & wages per employee of **RM3,863** in December 2018.

Sales value per employee grew by **5.7 per cent** to record **RM67,249** as compared with the same month of the previous year.

Overall 2018, the sales value of the Manufacturing sector registered an increase of **7.7 per cent** to **RM824.8 billion**. The number of employees engaged during the period, went up by **1.7 per cent** to register **1,075,635 persons**. Cumulatively, sales value per employee during the reference period rose by **5.9 per cent** to record **RM766,840**.

*Notes:

Data for December 2018 is **provisional**. The data will be updated based on the latest available figures and subsequently published in the January 2019 publication.

Released By:

DATO' SRI DR. MOHD UZIR MAHIDIN
CHIEF STATISTICIAN MALAYSIA
DEPARTMENT OF STATISTICS MALAYSIA

 [DrUzir_Mahidin](#)  [dr_uzir](#) 

11 FEBRUARY 2019

Contact person:

Ho Mei Kei
Public Relation Officer
Strategic Communication and International Division
Department of Statistics, Malaysia
Tel : +603-8885 7942
Fax : +603-8888 9248
Email : mkho[at]dosm.gov.my