



DEPARTMENT OF STATISTICS MALAYSIA

PRESS RELEASE

MYSEEA PSUT WATER ACCOUNT, 2015

Malaysia registered total water abstraction of 14,791 millions of cubic metres

The total water abstraction from natural resources in 2015 recorded 14,791 millions of cubic metres which includes 14,678 millions of cubic metres (99.2%) from inland water resources and other sources of 113 millions of cubic metres (0.8%).

Domestic production of abstracted water by Water supply & sewerage sector for distribution dominated the supply in the economy with a value of 3,790 millions of cubic metres (99.3%) as compared to imports which registered a value of 25 millions of cubic metres. Total supply and use of abstracted water for distribution and own use in the Malaysia's economy for 2015 registered 3,815 millions of cubic metres and 8,590 millions of cubic metres respectively.

Agriculture was the largest supply of abstracted water for own use of 6,194 millions of cubic metres (72.2%); followed by Electricity, gas, steam & air conditioning supply, 1,969 millions of cubic metres (23.0%); Water supply & sewerage, 277 millions of cubic metres (3.2%); and Manufacturing, 80 millions of cubic metres (1.0%).

Abstracted water used domestically recorded 14,501 millions of cubic metres (98.0%) against exports of 290 millions of cubic metres. The abstracted water used in the economy consists of two categories namely distributed water and own use which recorded 3,815 millions of cubic metres (26.4%) and 8,590 millions of cubic metres (59.1%) respectively. The rest is Non Revenue Water of 2,096 millions of cubic metres (14.5%).

Use of distributed water in economic sectors and households registered 1,487 millions of cubic metres and 2,328 millions of cubic metres respectively. Other services was the main user of distributed water in economic sectors with 812 millions of cubic metres; followed by Manufacturing, 510 millions of cubic metres; and Agriculture, 75 millions of cubic metres.



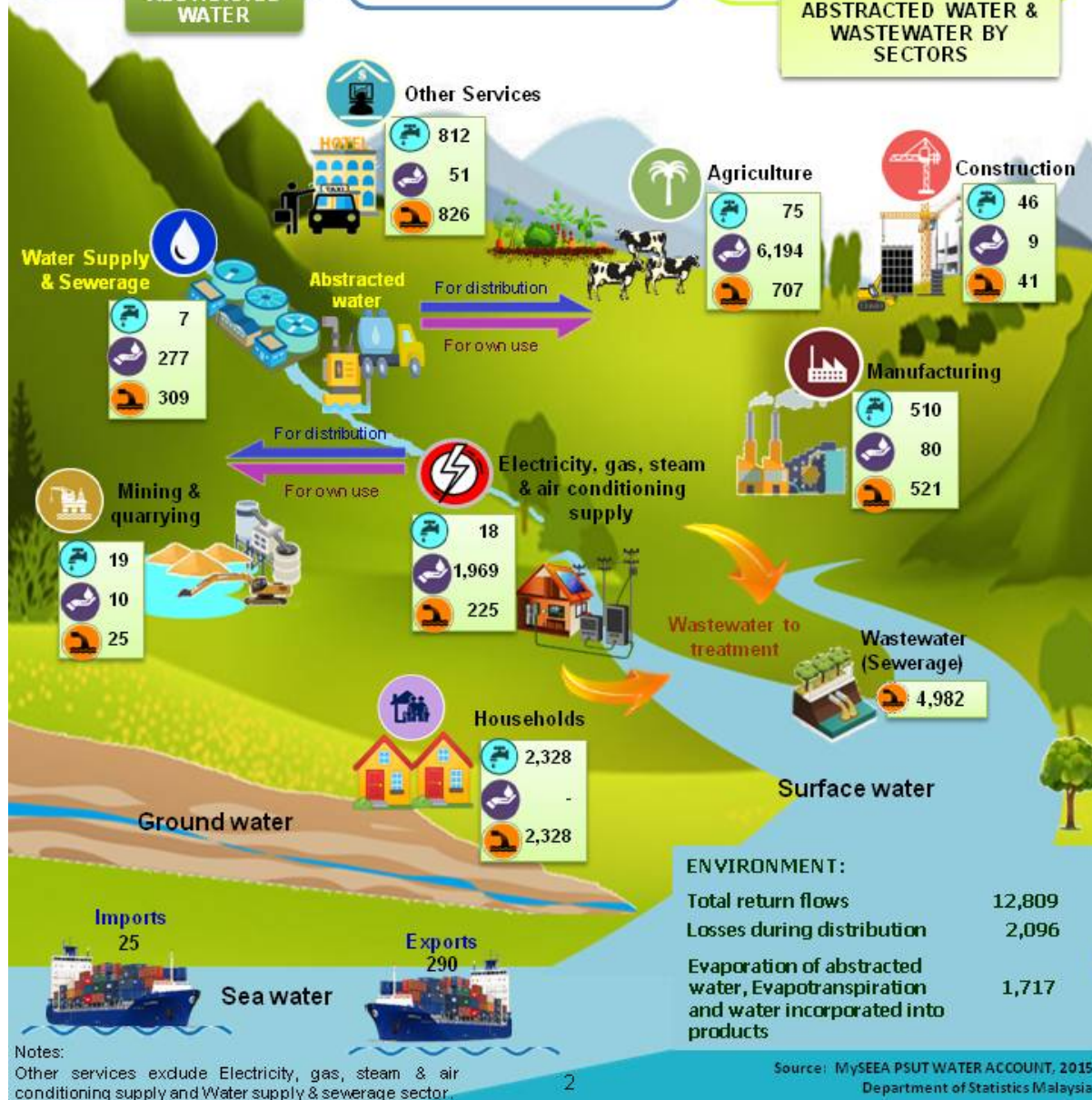
MySEEA PSUT WATER ACCOUNT, 2015

(Millions of cubic metres (m³))

SOURCES OF ABSTRACTED WATER	
• Surface Water	14,586
• Ground Water	92
• Sea Water	113

ABSTRACTED WATER	
• For distribution	3,815
Domestic	3,790
Imports	25
• For own use	8,590
• Exports	290
• Losses	2,096

ABSTRACTED WATER & WASTEWATER BY SECTORS	
• Distributed water	3,815
• Own use	8,590
• Wastewater to treatment	4,982



Notes: Other services exclude Electricity, gas, steam & air conditioning supply and Water supply & sewerage sector.

Released By:

**DATO' SRI DR. MOHD UZIR MAHIDIN
CHIEF STATISTICIAN MALAYSIA
DEPARTMENT OF STATISTICS, MALAYSIA**

 [DrUzir_Mahidin](#)   [Dr_Uzir](#)

17 June 2020

Contact person:

Mohd Yusrizal bin Ab. Razak
Public Relation Officer
Strategic Communication and International Division
Department of Statistics, Malaysia
Tel : +603-8885 7942
Fax : +603-8888 9248
E-mail : yusrizal.razak[at]dosm.gov.my