

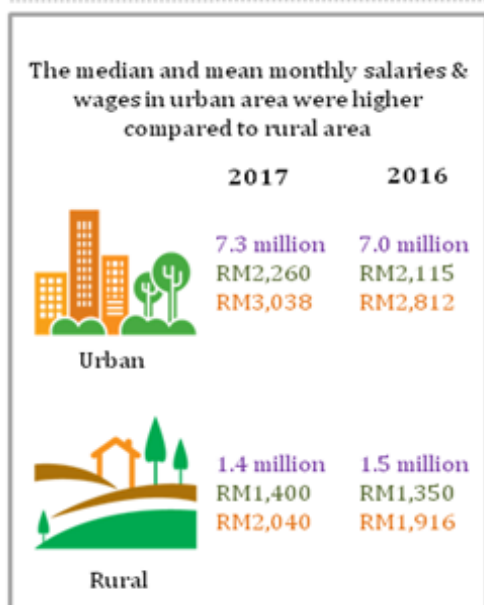
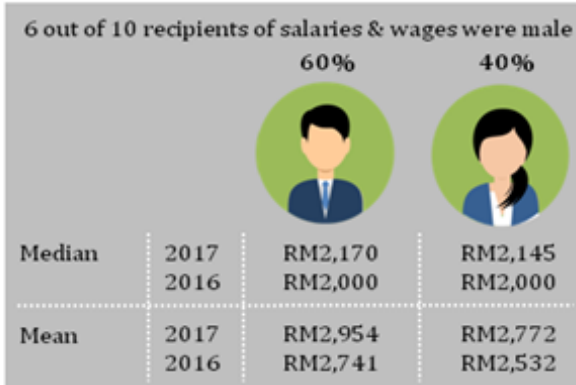
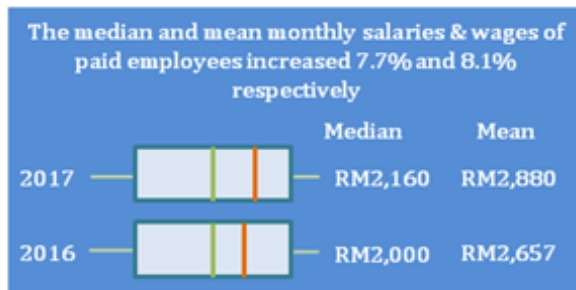


DEPARTMENT OF STATISTICS MALAYSIA

PRESS RELEASE

SALARIES & WAGES SURVEY REPORT, MALAYSIA, 2017

PRINCIPAL STATISTICS OF SALARIES & WAGES FOR CITIZENS MALAYSIA, 2017



The median and mean monthly salaries and wages for both employees with primary education and no formal education recorded a double digit growth rate



■ Recipients of salaries & wages

■ Median

■ Mean

## INTRODUCTION

The Salaries & Wages Survey is conducted by the Department of Statistics, Malaysia (DOSM) every year through household approach to collect information of monthly salaries & wages from the principal occupation of paid employees. Salaries & Wages Survey is carried out using probability sampling covering all states in Malaysia. Paid employee is defined in this survey as a person who works for at least six hours a day or at least 20 days a month. The total number of paid employees in 2017 was 8.7 million persons.

Salaries & Wages Survey Report is an annual publication which presents the principal statistics of salaries & wages for Malaysian that are the median and mean monthly salaries & wages by demographic and socioeconomic characteristics namely sex, age group, ethnic group, educational attainment, highest certificate obtained, strata, state, occupation and industry.

### **MEDIAN MONTHLY SALARIES & WAGES RECEIVED BY EMPLOYEES IN 2017 ROSE 7.7 PER CENT WHILE MEAN MONTHLY SALARIES & WAGES INCREASED 8.1 PER CENT**

The value of median monthly salaries & wages received by employees rose 7.7 per cent per annum to RM2,160 from RM2,000 in 2016. Meanwhile, the mean monthly salaries & wages increased to RM2,880 as compared to RM2,657 in the previous year with the growth rate of 8.1 per cent. [Table 1]

**Table 1:  
Median and mean monthly salaries & wages of employees, Malaysia, 2016–2017**

Year	Number of Recipients ('000)	Median (RM)	Mean (RM)
2016	8,424.1	2,000	2,657
2017	8,664.7	2,160	2,880



CAGR (%) for Median: 7.7  
CAGR (%) for Mean: 8.1

Note: CAGR refers to compounded annual growth rate

## MONTHLY SALARIES & WAGES OF EMPLOYEES BY SEX

Median monthly salaries & wages for both male and female employees posted high growth of 8.2 per cent and 7.0 per cent respectively. In terms of mean monthly salaries & wages, female employees recorded a higher growth of 9.1 per cent while male employees at 7.5 per cent. [Exhibit 1]

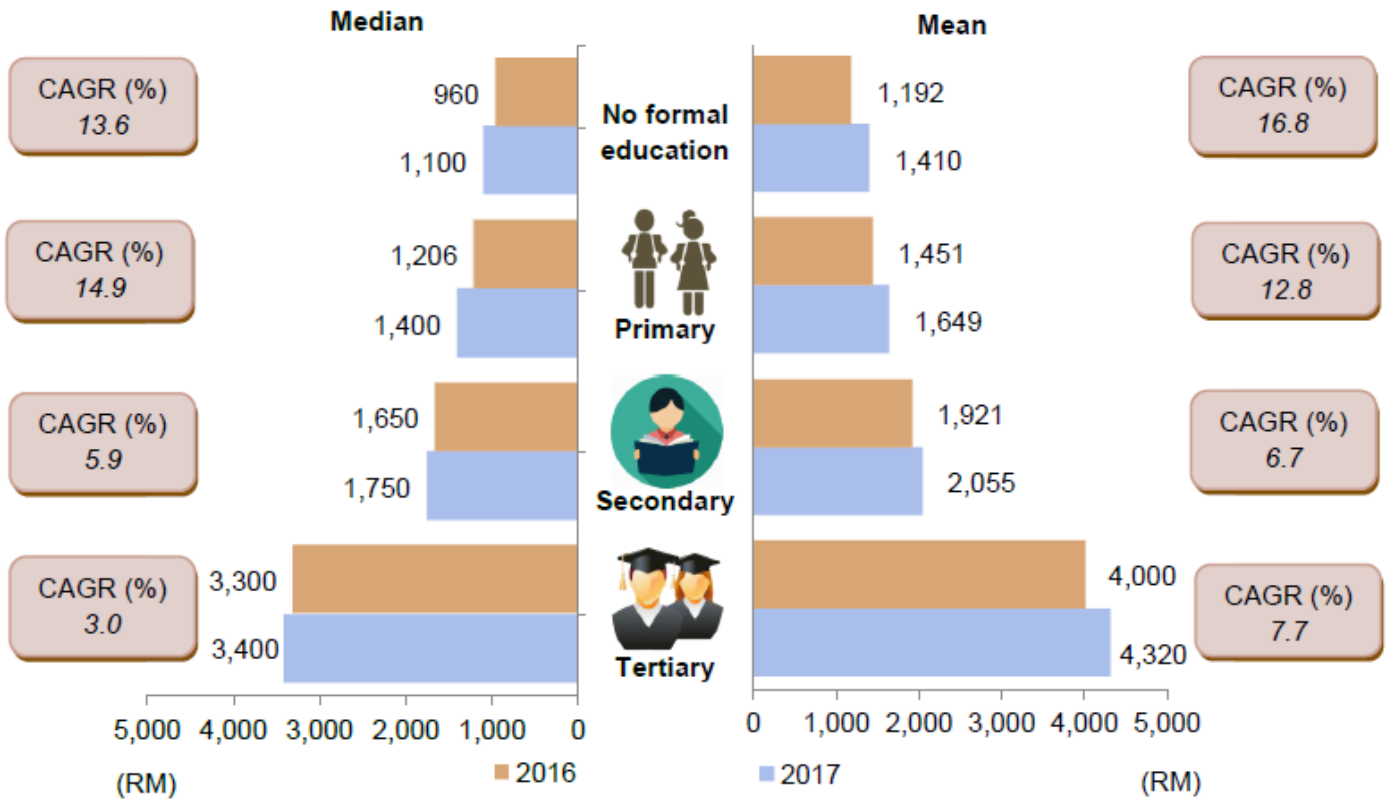
**Exhibit 1:  
Median and mean monthly salaries & wages of employees by sex, Malaysia  
2016–2017**

Sex	2016		2017		CAGR	
	Median (RM)	Mean	Median (RM)	Mean	Median (%)	Mean
Total	2,000	2,657	2,160	2,880	7.7	8.1
	2,000	2,741	2,170	2,954	8.2	7.5
	2,000	2,532	2,145	2,772	7.0	9.1

## MONTHLY SALARIES & WAGES OF EMPLOYEES BY EDUCATIONAL ATTAINMENT

The value of median and mean monthly salaries and wages for employees with tertiary education remained high, grew 3.0 per cent and 7.7 per cent respectively. [Chart 1]

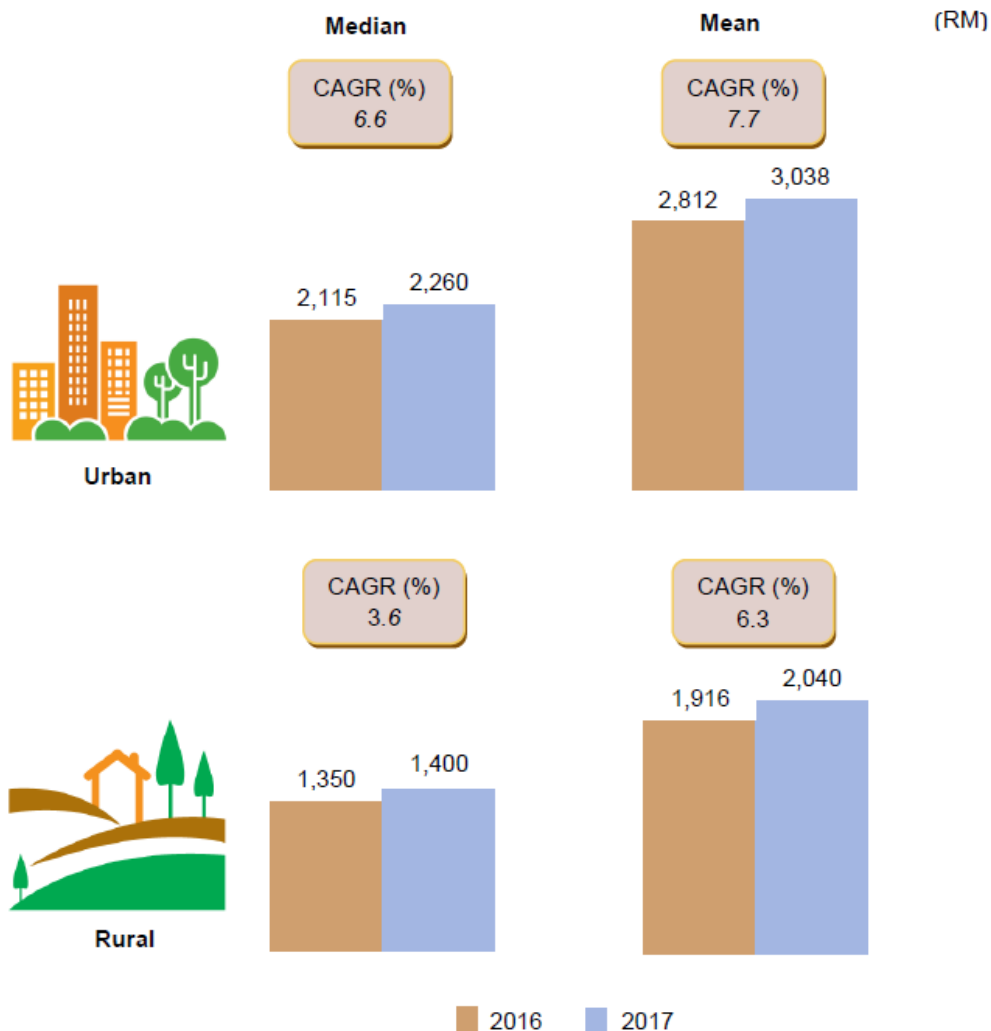
**Chart 1:**  
**Median and mean monthly salaries & wages of employees by educational attainment, Malaysia, 2016–2017**



## MONTHLY SALARIES & WAGES OF EMPLOYEES BY STRATA

In 2017, the growth rate for median monthly salaries & wages of employees in the urban area increased by 6.6 per cent per annum to RM2,260. Meanwhile, the median monthly salaries & wages for employees in the rural area grew 3.6 per cent. The growth of mean monthly salaries & wages of employees in both urban and rural areas were higher at 7.7 per cent and 6.3 per cent respectively. [Chart 2]

**Chart 2:**  
**Median and mean monthly salaries & wages of employees by strata, Malaysia**  
**2016–2017**



Detailed information regarding this report can be accessed through the eStatistik application in the Department of Statistics, Malaysia website, [www.dosm.gov.my](http://www.dosm.gov.my).

### Released By:

**THE OFFICE OF CHIEF STATISTICIAN MALAYSIA**  
**DEPARTMENT OF STATISTICS, MALAYSIA**  
**8 May 2018**

### Contact person:

Ho Mei Kei  
Public Relation Officer  
Strategic Communication & International Division  
Department of Statistics, Malaysia  
**Tel** : +603-8885 7942  
**Fax** : +603-8888 9248  
**Email** : mkho[at]dosm.gov.my