



DEPARTMENT OF STATISTICS MALAYSIA

PRESS RELEASE

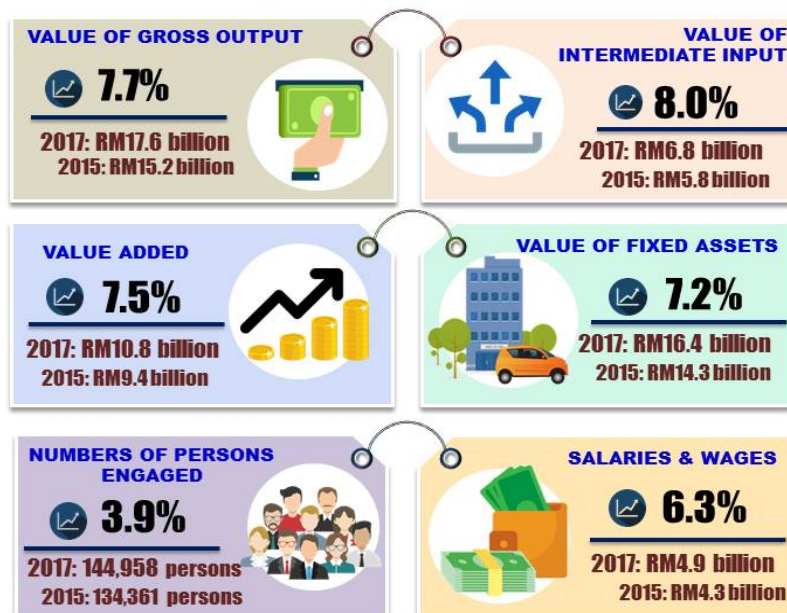
ANNUAL ECONOMIC STATISTICS 2018
EDUCATION SERVICES

INTRODUCTION

This publication presents statistics on the education services which obtained from the Annual Economic Survey 2018 for reference year 2017. Education services comprise of primary education, secondary education, college and university education and other education. The main statistics such as the value of gross output, value of intermediate input, value added, number of persons engaged, salaries & wages paid as well as value of fixed assets owned is also presented in this publication.



MAIN FINDINGS



Annual growth rate 2015-2017



PERFORMANCE OF EDUCATION SERVICES

The education services recorded gross output value of RM17.6 billion in 2017 compared to RM15.2 billion in 2015 with the annual growth rate value of 7.7 per cent per annum. The value of intermediate input increased by RM1.0 billion to record RM6.8 billion with the average annual growth rate of 8.0 per cent, thus resulting a value added of RM10.8 billion for the year 2017. The number of persons engaged in this sector also reported an increase of 3.9 per cent to 144,958 persons as compared to 134,361 persons in 2015. Meanwhile, the salaries & wages paid in 2017 amounted to RM4.9 billion compared to RM4.3 billion in 2015.

VALUE OF GROSS OUTPUT

In the period of 2015 to 2017, the gross output value of education services increased 7.7 per cent per annum. College and university education was the largest contributor of gross output value with RM10.4 billion (59.0%) in Annual Economic Survey 2018. The second largest contributor was other education with RM3.5 billion (19.8%) followed by secondary education with RM1.9 billion (11.1%) and primary education with RM1.8 billion (10.1%).

VALUE ADDED




The total value added recorded in education services for 2017 is RM10.8 billion with annual growth rate of 7.5 per cent per annum within the period of two years. College and university education recorded the highest value added in 2017 which amounted to RM6.5 billion (2015: RM5.7 billion). This was followed by the other education of RM1.9 billion (2015: RM1.7 billion) and secondary education of RM1.3 billion (2015: RM1.1 billion).

NUMBER OF PERSONS ENGAGED

The number of persons engaged in this sector also reported an increase of 3.9 per cent to 144,958 persons as compared to 134,361 persons in 2015. Meanwhile, the salaries & wages paid in 2017 amounted to RM4.9 billion compared to RM4.3 billion in 2015. Paid full-time employees recorded a total of 126,751 persons with percentage share of 87.4 per cent, as against to paid part-time employees (7,318 persons; 5.1%) and working owners & unpaid family workers (10,889 persons; 7.5%).

Released By:

DATO' SRI DR. MOHD UZIR MAHIDIN
CHIEF STATISTICIAN MALAYSIA
DEPARTMENT OF STATISTICS, MALAYSIA

 [DrUzir_Mahidin](#)   [Dr_Uzir](#)

27 March 2019

Contact person:

Ho Mei Kei
Public Relation Officer
Strategic Communication and International Division
Department of Statistics, Malaysia
Tel : +603-8885 7942
Fax : +603-8888 9248
Email : mkho[at]dosm.gov.my