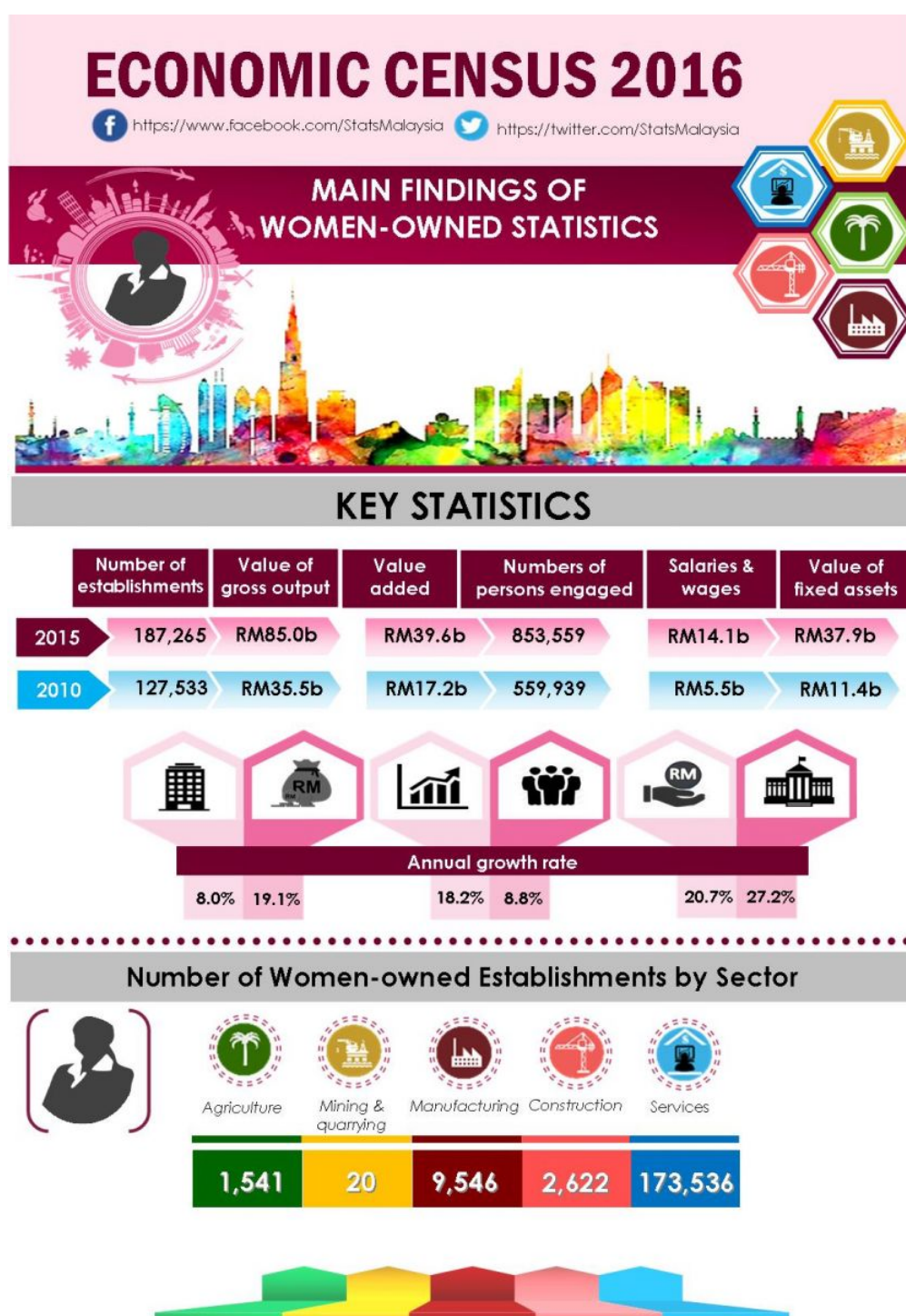




DEPARTMENT OF STATISTICS MALAYSIA

PRESS RELEASE

THE PARTICIPATION OF WOMEN IN BUSINESS IS GROWING IN 2015 WITH AN ANNUAL GROWTH RATE OF 8.0 PERCENT.



WOMEN-OWNED ESTABLISHMENTS PERFORMANCE

The census showed that there were 187,265 Women-owned establishments which contributed 20.3 per cent to the total economic sector in 2015. Value of gross output and value added generated by Women-owned establishments amounted to RM85.0 billion (3.4%) and RM39.6 billion (4.0%) respectively. Number of persons engaged for Women-owned establishments were 853,559 (9.8%) persons with salaries & wages paid of RM14.1 billion (5.7%). The value of fixed assets for Women-owned establishments were recorded at RM37.9 billion or 2.4 per cent.

NUMBER OF ESTABLISHMENTS

In 2015, there were 187,265 Women-owned establishments as compared to 127,533 establishments in 2010 with an annual growth rate at 8.0 per cent. Services sector recorded the highest contribution with 92.7 per cent (173,536 establishments), followed by Manufacturing sector 5.1 per cent (9,546 establishments) and Construction sector 1.4 per cent (2,622 establishments). Agriculture sector posted the highest annual growth of 21.6 per cent followed by Construction sector (13.8%) and Services sector (8.2%).

VALUE OF GROSS OUTPUT

Value of gross output generated by the Women-owned establishments amounted to RM85.0 billion which contributed 3.4 per cent to overall economic sectors in Malaysia for year 2015. Services sector generated the highest value of gross output of RM56.2 billion or 66.1 per cent, subsequently followed by Manufacturing sector of RM16.7 billion or 19.7 per cent and Construction sector RM6.8 billion (8.0%).

VALUE ADDED

Value added generated by Women-owned establishments was RM39.6 billion which contributed 4.0 per cent to overall economic sectors in Malaysia for year 2015. Services sector remained to record the highest value added of RM30.1 billion or 76.1 per cent. This was followed by Manufacturing sector (RM4.2 billion; 10.6%) and Agriculture sector (RM2.8 billion; 7.1%).

NUMBER OF PERSONS ENGAGED

The number of persons engaged in Women-owned establishments were 853,559 persons. Out of this total, 576,462 persons or 67.5 per cent were paid full-time employees. A total of 242,547 persons were working proprietors and unpaid family workers (28.4%) whilst 34,550 persons (4.1%) were paid part-time employees.

SALARIES & WAGES PAID

In 2015, salaries & wages paid for Women-owned establishments amounted to RM14.1 billion, with annual growth of 20.7 percent as compared to 2010. Services sector recorded the highest total salaries & wages paid RM10.1 billion with percentage contribution of 71.3 per cent. This was followed by Manufacturing and Construction sector RM2.0 billion (14.1%) and RM1.3 billion (9.3%) respectively.

Released By:

**THE OFFICE OF CHIEF STATISTICIAN MALAYSIA
DEPARTMENT OF STATISTICS, MALAYSIA
22 December 2017**

Contact person:

Ho Mei Kei
Public Relation Officer
Corporate and User Services Division
Department of Statistics, Malaysia
Tel : +603-8885 7942
Fax : +603-8888 9248
Email : mkho[at]stats.gov.my