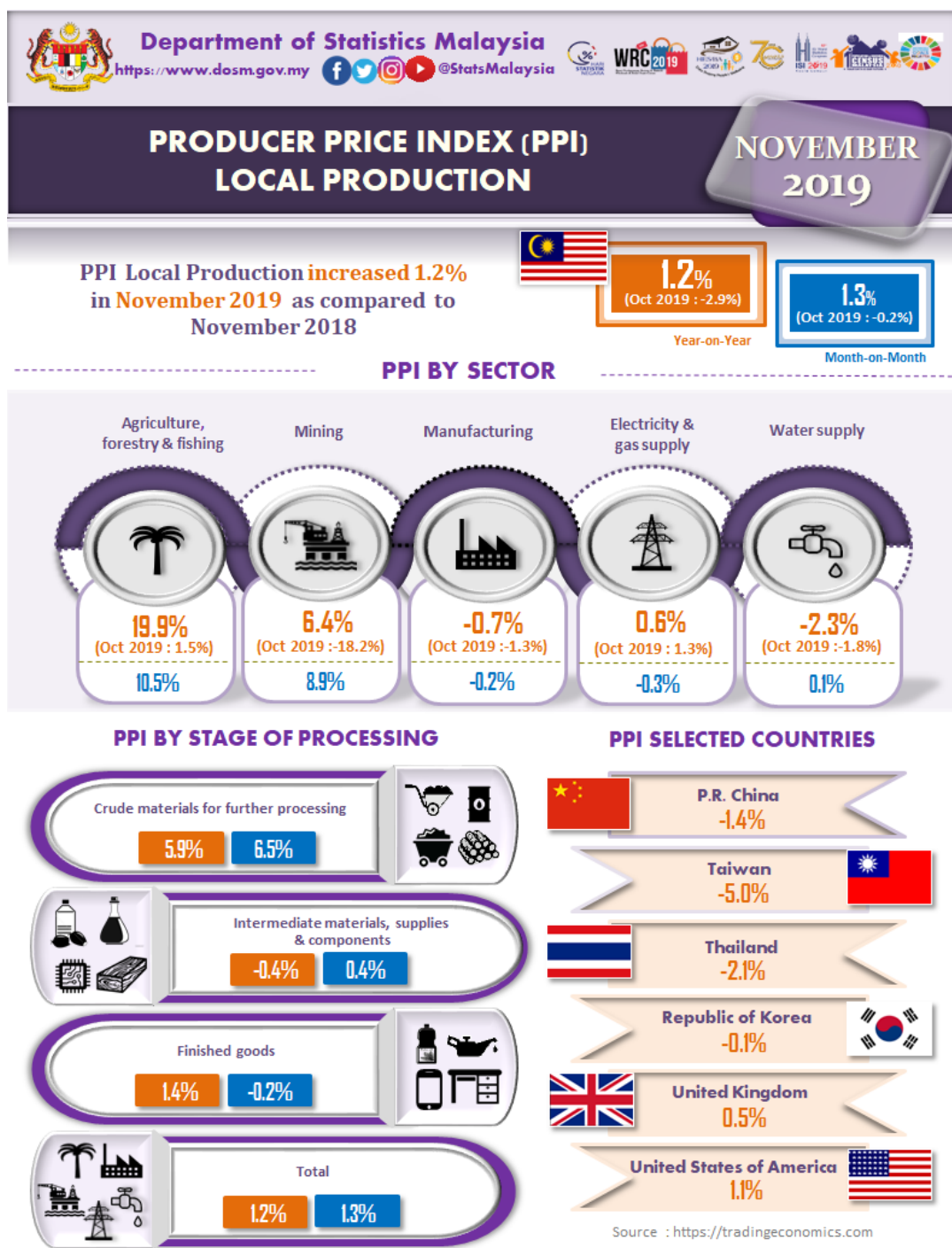




DEPARTMENT OF STATISTICS MALAYSIA

PRESS RELEASE

PRODUCER PRICE INDEX MALAYSIA NOVEMBER 2019



## PRODUCER PRICE INDEX (2010=100) BY SECTOR (MSIC 2008)

The Producer Price Index (PPI) local production increased 1.2 per cent in November 2019 to 106.5 as against 105.2 in the same month of the preceding year. This was the first positive yearly basis change after declining for twelve consecutive months since November 2018. The index of Agriculture, forestry & fishing recorded a double digit increase of 19.9 per cent, followed by Mining (6.4%) and Electricity & gas supply (0.6%) indices. In contrast, the Water supply and Manufacturing indices declined 2.3 per cent and 0.7 per cent respectively.

On a monthly basis, the PPI local production rose 1.3 per cent in November 2019. The increase was supported by the Agriculture, forestry & fishing (10.5%), Mining (8.9%) and Water supply (0.1%) indices. Meanwhile, the index of Electricity & gas supply recorded a decrease of 0.3 per cent and Manufacturing index (-0.2%). [Table 1]

**Table 1 : Producer Price Index (2010=100) Local Production by Sector (MSIC 2008), Malaysia**

Sector	Code	Weights	Index		Percentage Change				
			Nov 2019	Year-on-Year		Month-on-Month			
				Sept 2019/ Sept 2018	Oct 2019/ Oct 2018	Nov 2019/ Nov 2018	Sept 2019/ Aug 2019	Oct 2019/ Sept 2019	Nov 2019/ Oct 2019
<b>Total</b>		<b>100.000</b>	<b>106.5</b>	<b>-2.4</b>	<b>-2.9</b>	<b>1.2</b>	<b>0.7</b>	<b>-0.2</b>	<b>1.3</b>
<b>Agriculture, forestry &amp; fishing</b>	<b>A</b>	<b>6.730</b>	<b>104.9</b>	<b>-1.1</b>	<b>1.5</b>	<b>19.9</b>	<b>-0.7</b>	<b>-0.2</b>	<b>10.5</b>
<b>Mining</b>	<b>B</b>	<b>7.927</b>	<b>109.4</b>	<b>-14.4</b>	<b>-18.2</b>	<b>6.4</b>	<b>6.0</b>	<b>-2.5</b>	<b>8.9</b>
<b>Manufacturing</b>	<b>C</b>	<b>81.571</b>	<b>105.9</b>	<b>-1.0</b>	<b>-1.3</b>	<b>-0.7</b>	<b>0.3</b>	<b>0.1</b>	<b>-0.2</b>
<b>Electricity &amp; gas supply</b>	<b>D</b>	<b>3.442</b>	<b>116.9</b>	<b>1.3</b>	<b>1.3</b>	<b>0.6</b>	<b>-0.9</b>	<b>-0.1</b>	<b>-0.3</b>
<b>Water supply</b>	<b>E</b>	<b>0.330</b>	<b>111.7</b>	<b>-2.8</b>	<b>-1.8</b>	<b>-2.3</b>	<b>0.0</b>	<b>0.0</b>	<b>0.1</b>

## PRODUCER PRICE INDEX BY STAGE OF PROCESSING

In November 2019, the PPI local production by stage of processing (SOP) grew 1.2 per cent as compared to November 2018. It was contributed by Crude materials for further processing (5.9%) and Finished goods (1.4%) indices. However, the index of Intermediate materials, supplies & components declined 0.4 per cent.




On a monthly basis, the PPI local production by SOP for November 2019 increased 1.3per cent as compared to October 2019. The increase was contributed by Crude materials for further processing (6.5%) and Intermediate materials, supplies & components (0.4%) indices. Conversely, the Finished goods index dropped 0.2 per cent. [Table 2]

**Table 2 : Producer Price Index (2010=100), Local Production by Stage of Processing**

Stage of Processing	Code	Weights	Index		Percentage Change				
			Nov 2019	Year-on-Year		Nov 2019/ Nov 2018	Month-on-Month		
				Sept 2019/ Sept 2018	Oct 2019/ Oct 2018		Sept 2019/ Aug 2019	Oct 2019/ Sept 2019	Nov 2019/ Oct 2019
<b>Total</b>		<b>100.000</b>	<b>106.5</b>	<b>-2.4</b>	<b>-2.9</b>	<b>1.2</b>	<b>0.7</b>	<b>-0.2</b>	<b>1.3</b>
Crude materials for further processing	1	16.410	111.2	-8.5	-11.4	5.9	3.0	-1.7	6.5
Intermediate materials, supplies & components	2	56.119	107.2	-1.8	-1.4	-0.4	0.1	0.4	0.4
Finished goods	3	27.471	101.6	1.3	0.7	1.4	0.3	-0.3	-0.2

Released by:

**DATO' SRI DR. MOHD UZIR MAHIDIN**  
**CHIEF STATISTICIAN MALAYSIA**  
**DEPARTMENT OF STATISTICS, MALAYSIA**

 DrUzir\_Mahidin   Dr\_Uzir

31 December 2019

**Contact person:**

Rohaida binti Mohamad  
 Public Relation Officer  
 Strategic Communication and International Division  
 Department of Statistics, Malaysia  
**Tel :** +603-8885 7942  
**Fax :** +603-8888 9248  
**Email :** rohaida.mohamad[at]dosm.gov.my