



DEPARTMENT OF STATISTICS MALAYSIA

PRESS RELEASE

SELECTED AGRICULTURAL INDICATORS, MALAYSIA, 2017

Agriculture sector grew 8.1 per cent in 2016

In 2016, agriculture sector stood at 8.1 per cent or RM89.5 billion to the Gross Domestic Product (GDP). Oil palm was a major contributor to the GDP of agriculture sector at 43.1 per cent followed by other agriculture (19.5%), livestock (11.6%), fishing (11.5%), forestry & logging (7.2%) and rubber (7.1 %).

In 2016, exports and imports of agriculture sector amounted to RM115,844 million and RM84,673 million respectively with the balance of trade at RM31,172 million. Exports and imports increased 5.4 per cent and 0.9 per cent respectively as compared to 2015.

- **Crops sub-sector**

The production of staple food namely paddy increased 768.9 thousand tonnes or 28.2 percent in 2016 as compared to 2015. Similarly, the production of cocoa beans and pepper also increased by 5.9 per cent and 3.3 per cent. Meanwhile, the production of fresh fruit bunches (oil palm), natural rubber and kenaf (dried stem) showed a decline.

- **Livestock sub-sector**

The highest number of livestock in 2016 was chicken at 305.06 million, an increase of 6.4 per cent. The number of duck, goat, cattle, and buffalo also increased while swine and sheep declined.

- **Fisheries sub-sector**

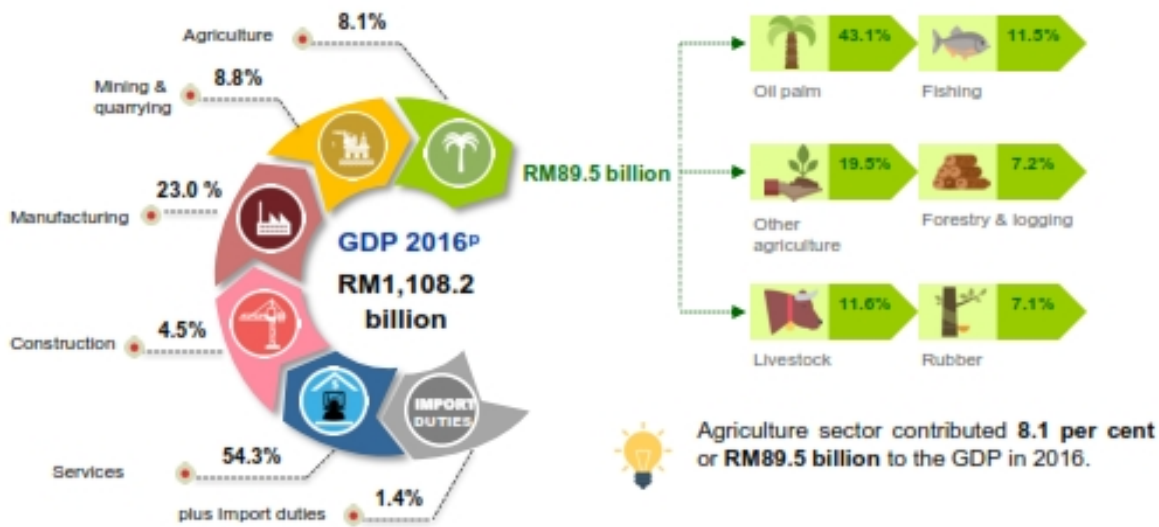
Total marine landings in 2016 was 1,583.8 thousand tonnes as compared to 1,486.1 thousand tonnes in 2015, an increase of 6.6 per cent. Meanwhile, the production of freshwater aquaculture decreased by 4.8 per cent to 106.7 thousand tonnes and the production of brackishwater aquaculture decreased 2.7 per cent to 383.7 thousand tonnes.

Number of employed persons in the agriculture sector was 1,609.9 thousand persons, a decrease of 8.2 per cent. The number of non-citizens employed in the agriculture sector was 600.4 thousand persons, a decrease of 7.1 per cent as compared to 2015. The percentage of males working in this sector was 76.9 per cent in 2016 while the remaining was females.

The comprehensive statistics can be obtained from the publication of Selected Agricultural Indicators, Malaysia, 2017.



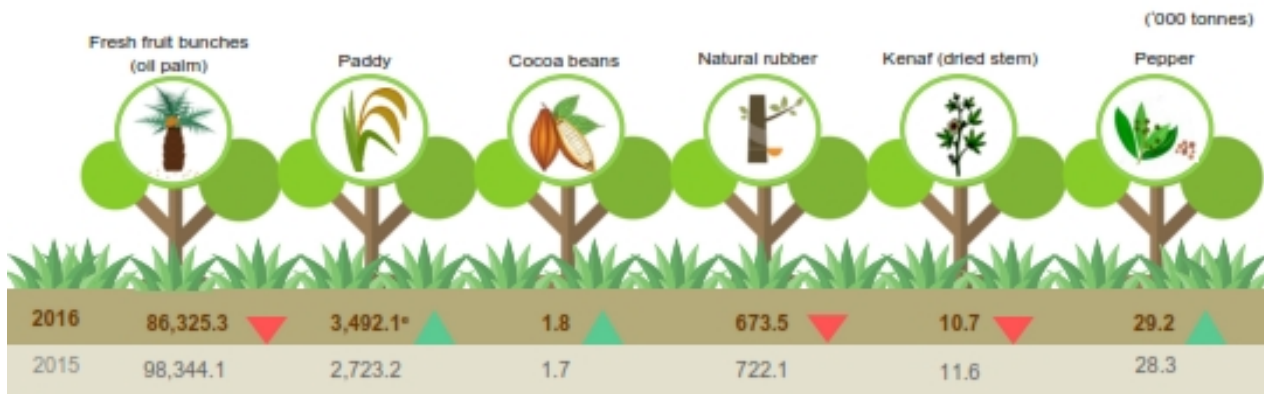
GDP 2016 – PERCENTAGE SHARE BY KIND OF ECONOMIC ACTIVITY (CONSTANT 2010 PRICES)



EXTERNAL TRADE OF AGRICULTURE SECTOR



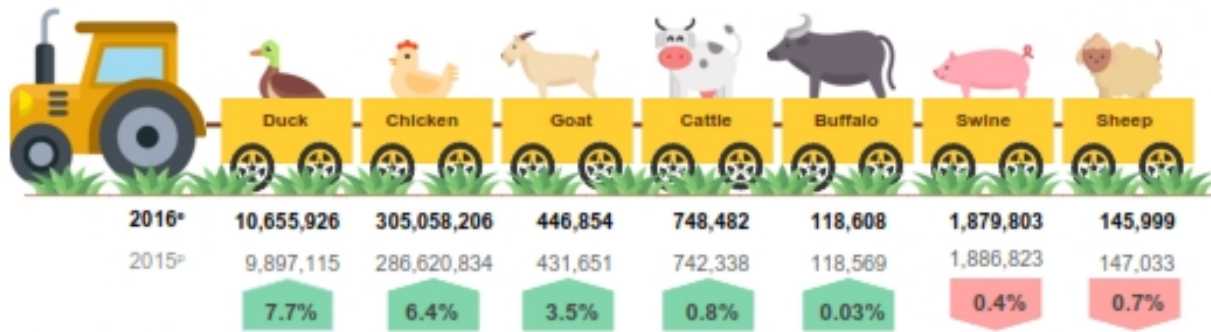
PRODUCTION OF AGRICULTURE BY SUB-SECTOR



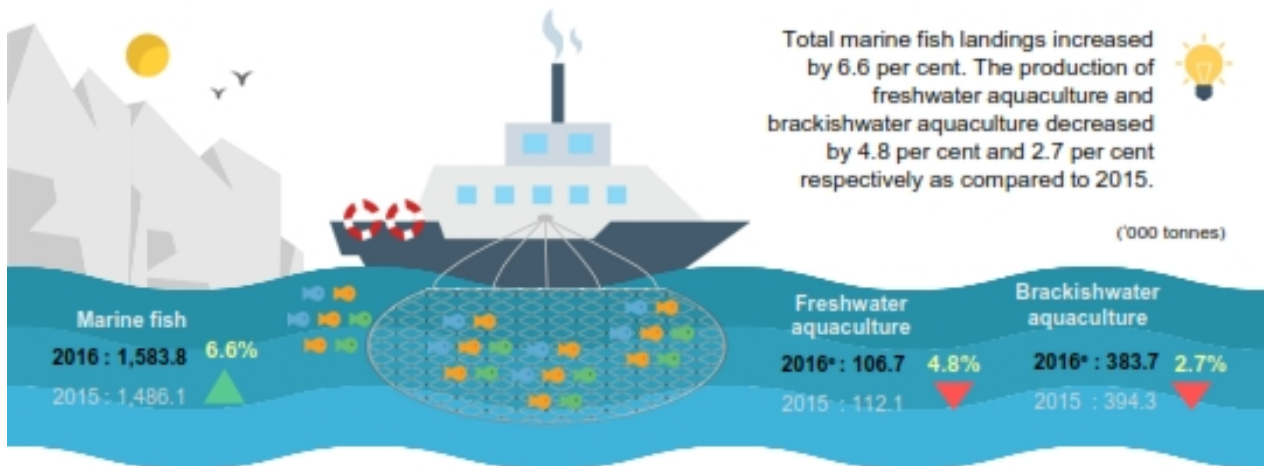
In 2016, the production of paddy, cocoa beans and pepper increased whereas the production of fresh fruit bunches (oil palm), natural rubber and kenaf (dried stem) showed a decrease as compared to 2015.

PRODUCTION OF AGRICULTURE BY SUB-SECTOR

(Numbers)

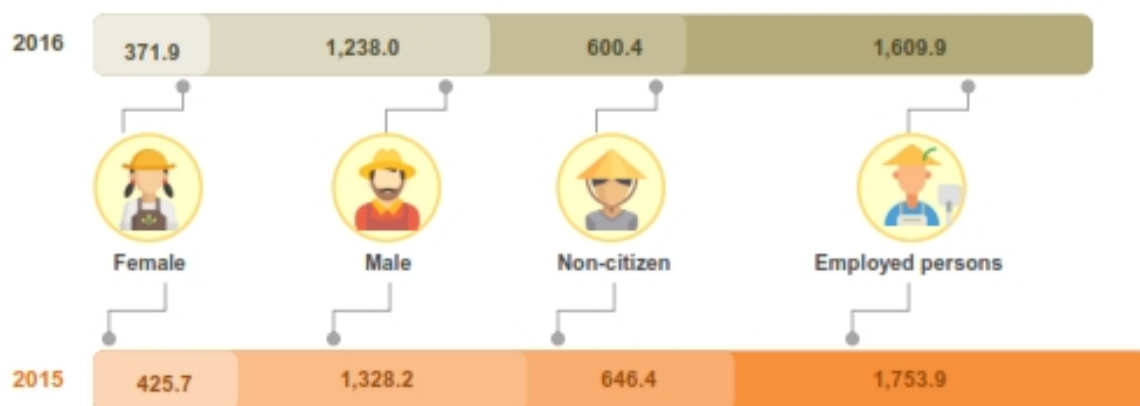


In 2016, the number of duck, chicken, goat, cattle and buffalo increased while swine and sheep showed a decrease.



EMPLOYED PERSONS IN THE AGRICULTURE SECTOR

(⁰⁰⁰ persons)



The number of employed persons in the agriculture sector decreased by 8.2 per cent as well as non-citizens employed persons declined by 7.1 per cent as compared to 2015. This sector was dominated by males with over 70 per cent of employed persons while the rest was females.

Source : Selected Agricultural Indicators, Malaysia, 2017
Department of Statistics Malaysia

Released By:

**THE OFFICE OF CHIEF STATISTICIAN MALAYSIA
DEPARTMENT OF STATISTICS, MALAYSIA**

22 December 2017

Contact person:

Ho Mei Kei

Public Relation Officer

Corporate and User Services Division

Department of Statistics, Malaysia

Tel : +603-8885 7942

Fax : +603-8888 9248

Email : mkho[at]stats.gov.my