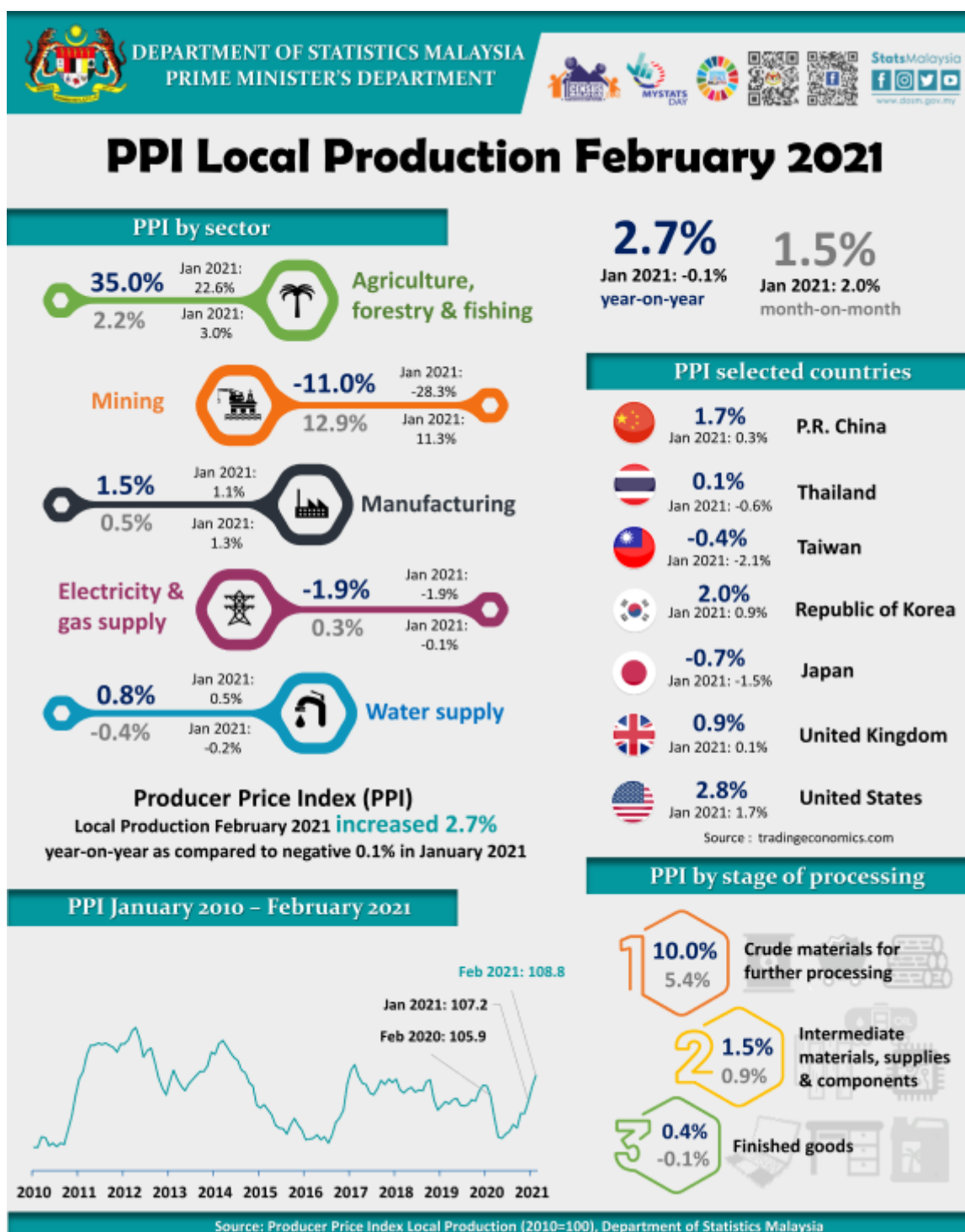




DEPARTMENT OF STATISTICS MALAYSIA

PRESS RELEASE

PRODUCER PRICE INDEX MALAYSIA FEBRUARY 2021



PRODUCER PRICE INDEX (2010=100) BY SECTOR (MSIC 2008)

Producer Price Index (PPI) local production recorded an increase of 2.7 per cent in February 2021 as compared to negative 0.1 per cent in January 2021. This is the first positive shift after experiencing a negative growth for 11 consecutive months since March 2020. Index of Agriculture, forestry & fishing continued to increase 35.0 per cent as compared to 22.6 per cent in the previous month. Index of Manufacturing and Water supply increased 1.5 per cent and 0.8 per cent respectively. Meanwhile, the index of Mining recorded a negative change of 11.0 per cent, improved from negative 28.3 per cent in January 2021. However, the index of Electricity & gas supply recorded a decrease of 1.9 per cent, similar to the previous month.

On a monthly basis, the PPI local production showed an increase of 1.5 per cent in February 2021 lower than 2.0 per cent recorded in previous month. Manufacturing and Agriculture, forestry & fishing sector increased with a slower growth of 0.5 per cent (January 2021: 1.3%) and 2.2 per cent (January 2021: 3.0%) respectively. However, Mining sector recorded a higher growth of 12.9 per cent as compared to 11.3 per cent recorded a month ago. Electricity & gas supply also recorded a positive growth of 0.3 per cent (January 2021: -0.1%). Meanwhile, the index of Water supply decreased 0.4 per cent.

Table 1 : Producer Price Index (2010=100) Local Production by Sector (MSIC 2008), Malaysia

Sector	Code	Weight	Index Feb 2021	Percentage Change					
				Year-on-Year			Month-on-Month		
				Dec 2020/ Dec 2019	Jan 2021/ Jan 2020	Feb 2021/ Feb 2020	Dec 2020/ Nov 2020	Jan 2021/ Dec 2020	Feb 2021/ Jan 2021
Total		100.000	108.8	-2.1	-0.1	2.7	1.7	2.0	1.5
Agriculture, forestry & fishing	A	6.730	139.9	23.5	22.6	35.0	4.2	3.0	2.2
Mining	B	7.927	84.2	-40.0	-28.3	-11.0	13.0	11.3	12.9
Manufacturing	C	81.571	108.6	0.2	1.1	1.5	0.9	1.3	0.5
Electricity & gas supply	D	3.442	115.9	-1.7	-1.9	-1.9	-0.9	-0.1	0.3
Water supply	E	0.330	111.9	0.7	0.5	0.8	-0.2	-0.2	-0.4

PRODUCER PRICE INDEX BY STAGE OF PROCESSING

All stages of processing recorded an increase in February 2021. A higher increase was recorded by Crude materials for further processing with a growth of 10.0 per cent (January 2021: -3.4%). Concurrently, the index of Intermediate materials, supplies & components and Finished goods increased 1.5 per cent and 0.4 per cent respectively.

On a monthly basis, the index of Crude materials for further processing rose by 5.4 per cent, a smaller shift as compared to previous month (January 2021: 6.2%). This is followed by the index of Intermediate materials, supplies & components with an increase of 0.9 per cent (January 2021: 1.2%). However, the index of Finished goods decreased 0.1 per cent.




Table 2 : Producer Price Index (2010=100), Local Production by Stage of Processing

Stage of Processing	Code	Weight	Index Feb 2021	Percentage Change					
				Year-on-Year			Month-on-Month		
				Dec 2020/ Dec 2019	Jan 2021/ Jan 2020	Feb 2021/ Feb 2020	Dec 2020/ Nov 2020	Jan 2021/ Dec 2020	Feb 2021/ Jan 2020
Total		100.000	108.8	-2.1	-0.1	2.7	1.7	2.0	1.5
Crude materials for further processing	1	16.410	115.9	-10.0	-3.4	10.0	6.3	6.2	5.4
Intermediate materials, supplies and components	2	56.119	109.8	0.3	1.1	1.5	1.3	1.2	0.9
Finished goods	3	27.471	101.8	-0.8	0.1	0.4	-0.1	0.6	-0.1

The full publication of the Producer Price Index Malaysia, February 2021 can be downloaded from [eStatistik](#) portal.

Released by:

DATO' SRI DR. MOHD UZIR MAHIDIN
CHIEF STATISTICIAN MALAYSIA
DEPARTMENT OF STATISTICS, MALAYSIA

 DrUzir_Mahidin   Dr_Uzir

31 March 2021

Contact person:

Mohd Yusrizal Ab Razak
 Public Relation Officer
 Strategic Communication and International Division
 Department of Statistics, Malaysia
 Tel : +603-8885 7942
 Fax : +603-8888 9248
 E-mail : yusrizal.razak[at]dosm.gov.my