



MINISTRY OF ECONOMY
DEPARTMENT OF STATISTICS MALAYSIA

MEDIA STATEMENT

**PERFORMANCE OF WHOLESALE & RETAIL TRADE, MALAYSIA,
FEBRUARY 2026**

**Malaysia's Wholesale & retail trade recorded sales of
RM156.3 billion, expanding by 5.3 per cent in February 2026**

PUTRAJAYA, 10TH APRIL 2026 – The Department of Statistics, Malaysia (DOSM) today released the **Performance of Wholesale & Retail Trade, February 2026**, recording total monthly sales of RM156.3 billion, reflecting a year-on-year growth of 5.3 per cent.

In a statement today, the Chief Statistician Malaysia, Dato' Sri Dr. Mohd Uzir Mahidin, said, "The sales growth recorded in February was mainly driven by the Retail trade and Wholesale trade sub-sectors. Retail trade posted total sales of RM70.1 billion, an increase of RM5.0 billion, representing a year-on-year growth of 7.7 per cent. Similarly, Wholesale trade recorded sales of RM69.5 billion, rising by RM3.7 billion, which translates to a year-on-year growth of 5.7 per cent. However, the Motor vehicles sub-sector experienced a decline of RM0.9 billion, resulting in total sales of RM16.7 billion."

Elaborating on the Retail trade sub-sector, Dato' Sri Dr. Mohd Uzir Mahidin stated that the performance was primarily driven by Retail sales in non-specialised stores, which grew by 10.4 per cent to RM27.6 billion. This expansion was largely supported by increased sales in provision stores, supermarkets and mini markets. The growth in retail activity was bolstered by seasonal festive spending during Chinese New Year, the one-off Sumbangan Asas Rahmah (SARA) disbursement, the upward revision in civil servants' salaries, and early preparations for the Ramadan season. Meanwhile, Retail sales in specialised stores rose by 7.4 per cent to RM14.8 billion in February 2026, underpinned by stronger demand for pharmaceuticals, medical & orthopaedic goods, clothing, and jewellery. In addition, Retail sales of automotive fuels increased by 6.2 per cent to RM6.3 billion. Retail sales of food, beverages & tobacco also registered a 7.7 per cent rise to RM4.5 billion, driven by higher purchases of meat and fish & other seafood.

"The Wholesale trade sub-sector continued to demonstrate steady performance in February, led by the Wholesale of household goods, which expanded by 9.6 per cent to RM15.0 billion. This growth was driven by stronger sales of pharmaceutical &

medical goods, perfumeries, cosmetics & toiletries, as well as household furniture. Meanwhile, the Other specialised wholesale group increased by 3.7 per cent to RM25.6 billion, supported by higher demand for fertilisers & agrochemical products, alongside ferrous & non-ferrous metal ores & metals. In addition, the Wholesale of food, beverages & tobacco rose by 5.7 per cent, underpinned by increased sales of dairy products, fish & other seafood, as well as vegetables,” said the Chief Statistician.

The decline in the Motor vehicles sub-sector during the month was primarily attributed to a 17.1 per cent contraction in the Sales of motor vehicle, which amounted to RM7.3 billion. This trend is in line with data from the Malaysian Automotive Association (MAA), which reported total vehicles sales of 52,414 units, while the Road Transport Department Malaysia (JPJ) recorded 56,690 vehicle registrations during the same period. Nevertheless, other groups within the sub-sector continued to register positive growth, including Sales of motor vehicle parts & accessories (6.6%), Maintenance and repair of motor vehicles (9.5%), as well as Sales, maintenance and repair of motorcycles (0.7%), reflecting sustained demand for vehicle servicing and aftermarket components.

Meanwhile, online retail sales continued to record positive growth in February, with the sales index increasing by 5.8 per cent year-on-year, slightly moderating from 5.9 per cent in the previous month. This trend indicates sustained strong demand within the e-commerce segment.

Digital payment activities continued to strengthen in February. E-money transactions surged by 74.8 per cent year-on-year, reaching RM30.2 billion, reflecting the rising adoption of cashless payment methods. The Real-time Retail Payments Platform (RPP) also maintained strong performance, with total transactions amounting to RM323.8 billion, registering a growth of 29.4 per cent. Meanwhile, FPX transactions grew by 23.3 per cent to RM40.6 billion. Credit card and debit card transactions were recorded at RM18.2 billion and RM13.5 billion, respectively.

In terms of the volume index, Wholesale & retail trade recorded a year-on-year increase of 4.4 per cent, mainly supported by the Wholesale trade and Retail trade sub-sectors, which grew by 6.2 per cent and 5.4 per cent, respectively. However, on a seasonally adjusted basis, the volume index declined by 1.8 per cent month-on-month.

The Department of Statistics Malaysia (DOSM) is conducting the **Economic Census 2026 (BE2026)**, with themed “**Data Nadi Ekonomi Rakyat**”. The sixth Economic Census, will be carried out from **5th January to 31st October 2026**. BE2026 aims to collect comprehensive and structured data from all registered and unregistered business establishments in Malaysia to assess the nation’s economic performance, structure and characteristics in an evidence-based manner.

Malaysia has, for the first time, successfully secured the **top position** globally in the biennial **Open Data Inventory (ODIN) 2024/25** report released by Open Data

Watch (ODW), surpassing 197 other countries. This achievement marks a significant leap from its 67th position in the ODIN 2022/23 assessment.

OpenDOSM NextGen is a medium that provides data catalogue and visualisations to facilitate users' analysis and can be accessed through <https://open.dosm.gov.my>.

Chart 1: Sales Value of Wholesale & Retail Trade

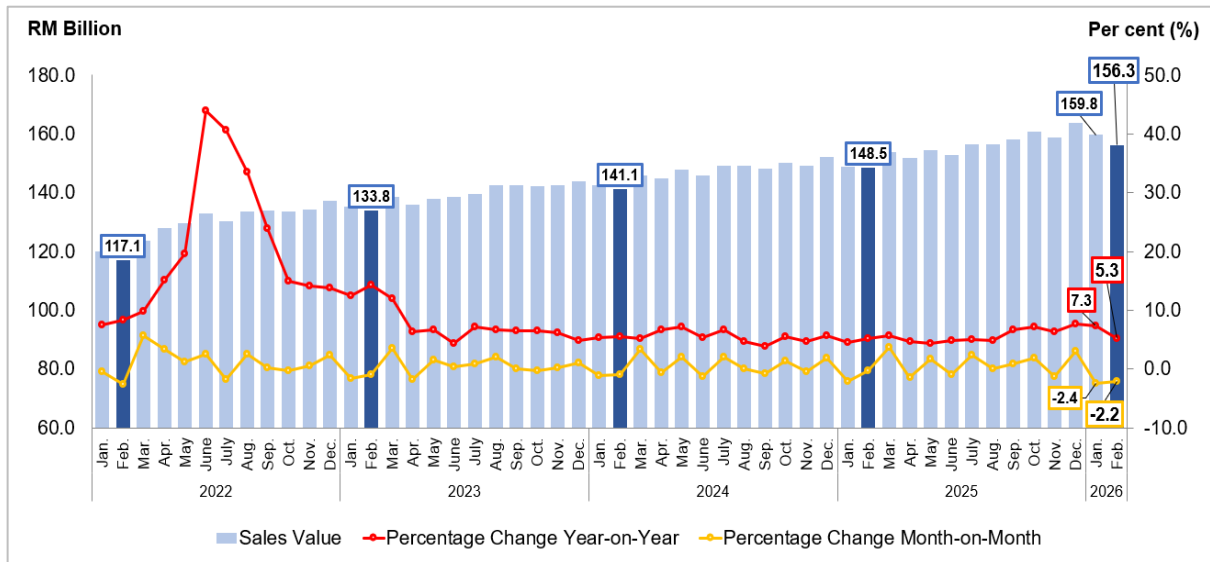


Chart 2: Sales Value of Wholesale Trade

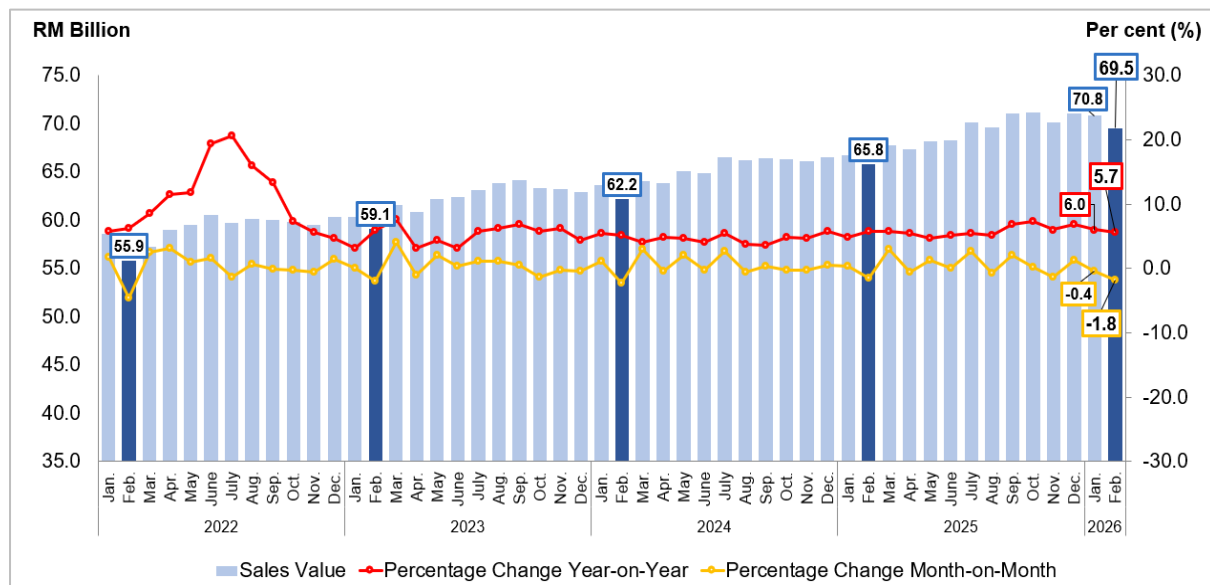


Chart 3: Sales Value of Retail Trade

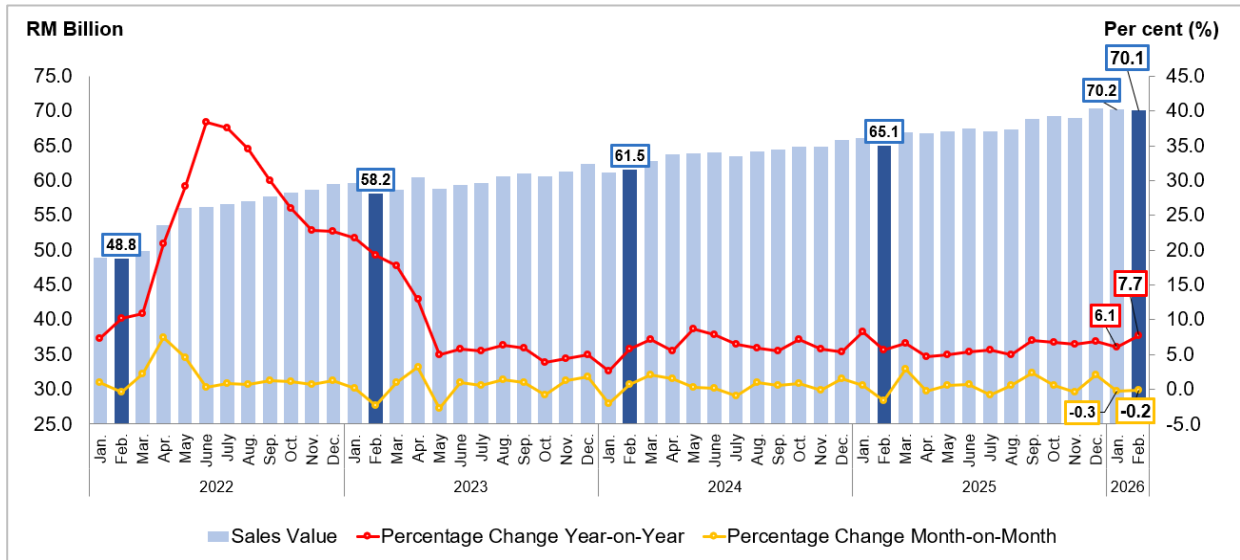


Chart 4: Sales Value of Motor Vehicles

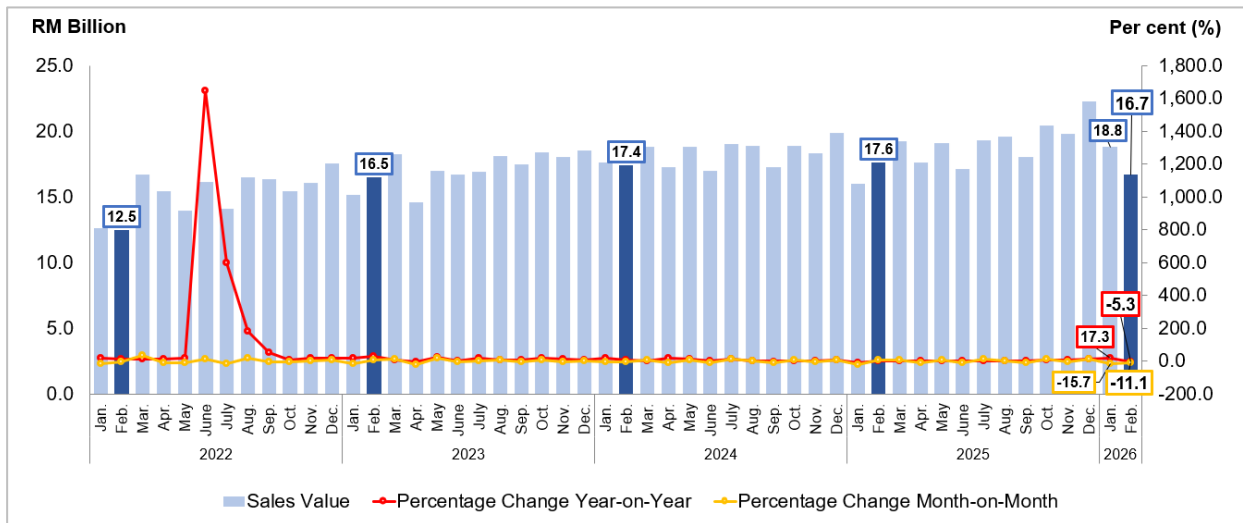
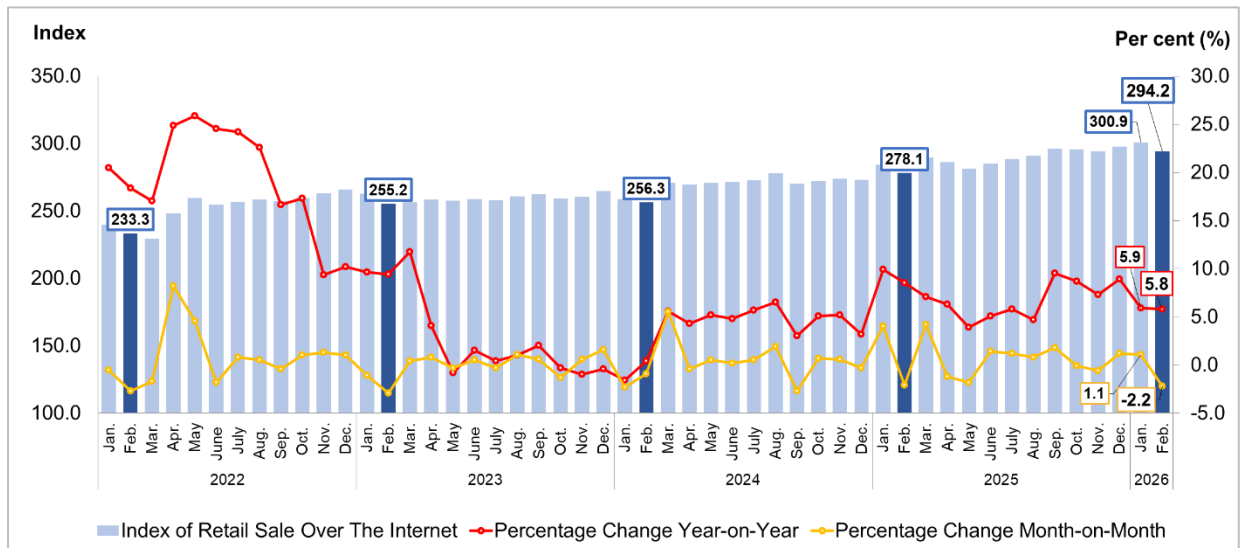


Chart 5: Index of Retail Sale Over the Internet



**Table 1: Payment Platforms in Malaysia
(January 2025 – February 2026)**

Year	Month	Payment Instruments				Payment System			
		Credit Card	Debit Card	E-money	Interbank GIRO	FPX	Direct Debit	JomPAY	RPP
(RM billion)									
2025	Jan.	20.1	14.9	19.5	142.0	38.6	6.4	5.0	290.7
	Feb.	16.8	12.7	17.3	118.1	32.9	6.0	4.9	250.3
	Mar.	19.1	15.6	20.3	140.3	40.4	6.4	4.9	297.7
	Apr.	17.7	13.3	19.7	130.0	35.5	7.3	4.7	277.8
	May	18.7	14.1	21.5	130.0	39.2	6.9	4.9	289.4
	June	18.1	13.2	21.1	125.0	31.2	6.8	4.8	277.2
	July	18.8	13.3	22.8	140.7	41.4	8.0	5.3	311.5
	Aug.	19.2	13.5	23.7	131.4	41.3	7.2	5.2	306.8
	Sept.	19.0	12.9	23.9	131.2	40.3	7.7	4.6	307.8
	Oct.	19.4	13.7	26.3	141.1	40.7	8.0	4.9	344.1
	Nov.	19.5	13.5	27.0	126.8	41.5	7.2	4.5	322.6
	Dec.	21.4	15.0	29.4	152.9	42.2	8.4	4.8	362.3
2026	Jan.	20.7	14.6	30.3	138.9	51.2	7.5	4.9	359.0
	Feb.	18.2	13.5	30.2	122.0	40.6	6.9	4.7	323.7
Year-on-Year (%)									
2025	Jan.	6.8	19.9	68.2	2.1	24.6	3.5	-1.0	26.6
	Feb.	-2.6	1.8	50.7	-2.3	19.3	3.8	2.8	20.6
	Mar.	7.0	16.2	71.2	9.2	25.9	1.4	3.5	29.9
	Apr.	5.5	4.5	68.7	0.5	25.4	9.1	0.8	21.1
	May	5.4	8.0	70.2	-3.9	21.1	9.0	0.6	20.3
	June	5.7	3.8	66.7	5.2	11.4	20.2	3.8	20.3
	July	6.0	5.4	69.8	1.6	23.4	16.9	3.2	21.6
	Aug.	7.8	6.3	67.0	-1.9	20.5	19.3	0.1	20.5
	Sept.	5.8	2.4	62.7	3.5	27.2	31.4	-0.6	26.1
	Oct.	4.7	4.2	66.7	6.4	27.6	25.4	0.7	31.0
	Nov.	6.9	6.8	66.9	-2.7	20.4	15.8	-3.7	23.6
	Dec.	4.2	1.4	64.2	6.5	20.6	23.7	-2.5	23.2
2026	Jan.	2.7	-1.9	55.4	-2.2	32.6	17.3	-1.7	23.5
	Feb.	8.5	6.3	74.8	3.3	23.3	15.5	-5.0	29.4

Source: Bank Negara Malaysia (BNM)

**Table 2: M1 Monetary Aggregates in Malaysia
(January 2025 – February 2026)**

Year	Month	M1 (RM billion)	Year-on-Year (%)
2025	Jan.	663.3	3.8
	Feb.	661.9	3.4
	Mar.	667.5	3.4
	Apr.	662.9	3.8
	May	663.1	4.4
	June	681.6	6.1
	July	680.2	6.8
	Aug.	679.5	6.6
	Sept.	694.3	7.7
	Oct.	693.5	7.5
	Nov.	700.5	6.9
	Dec.	726.3	9.0
2026	Jan.	722.2	8.9
	Feb.	727.8	10.0

Source: Bank Negara Malaysia (BNM)

Released by:

**THE OFFICE OF CHIEF STATISTICIAN MALAYSIA
DEPARTMENT OF STATISTICS MALAYSIA
10 APRIL 2026**