

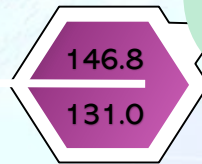
FEBRUARY 2026

EXTERNAL TRADE INDICES

EXPORTS

▼ 10.8%

JAN '26
FEB '26



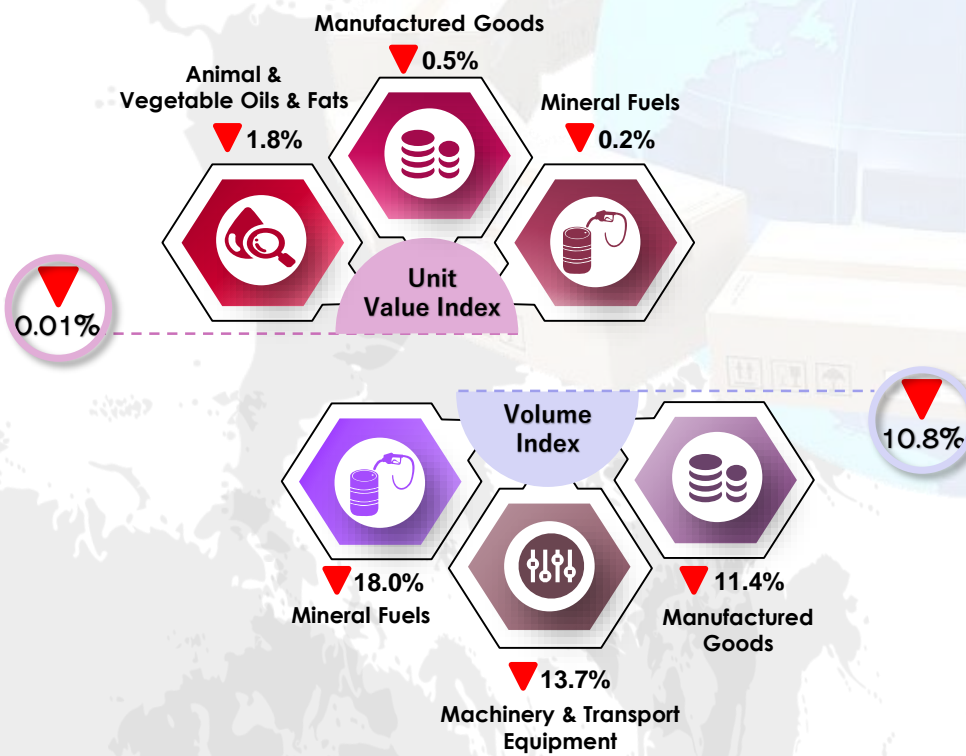
Value (RM Billion)



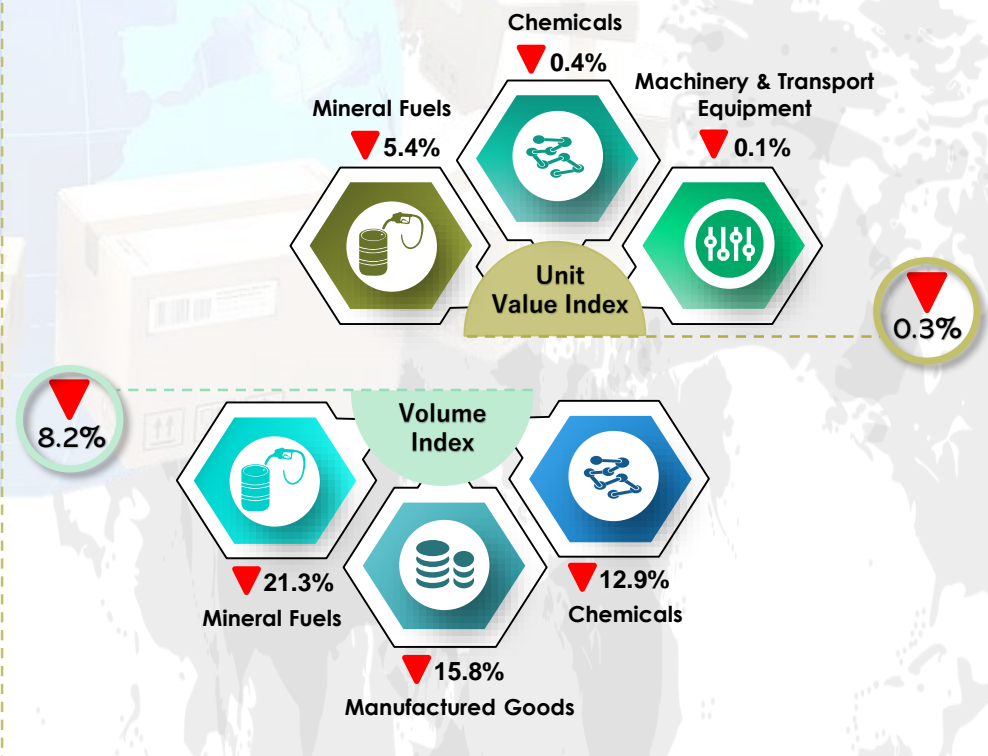
JAN '26
FEB '26

IMPORTS

▼ 8.5%

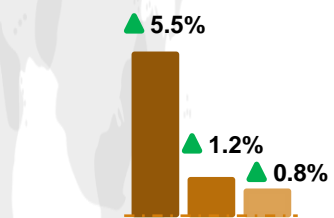
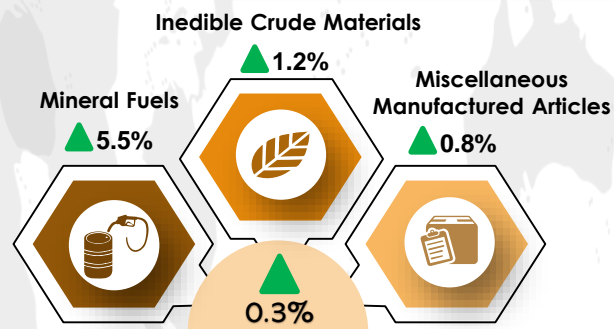


▲ All changes are based on month-on-month comparison.



▲ All changes are based on month-on-month comparison.

TERMS OF TRADE



▲ All changes are based on month-on-month comparison.

Source: External Trade Indices, February 2026, Department of Statistics Malaysia (DOSM)

