

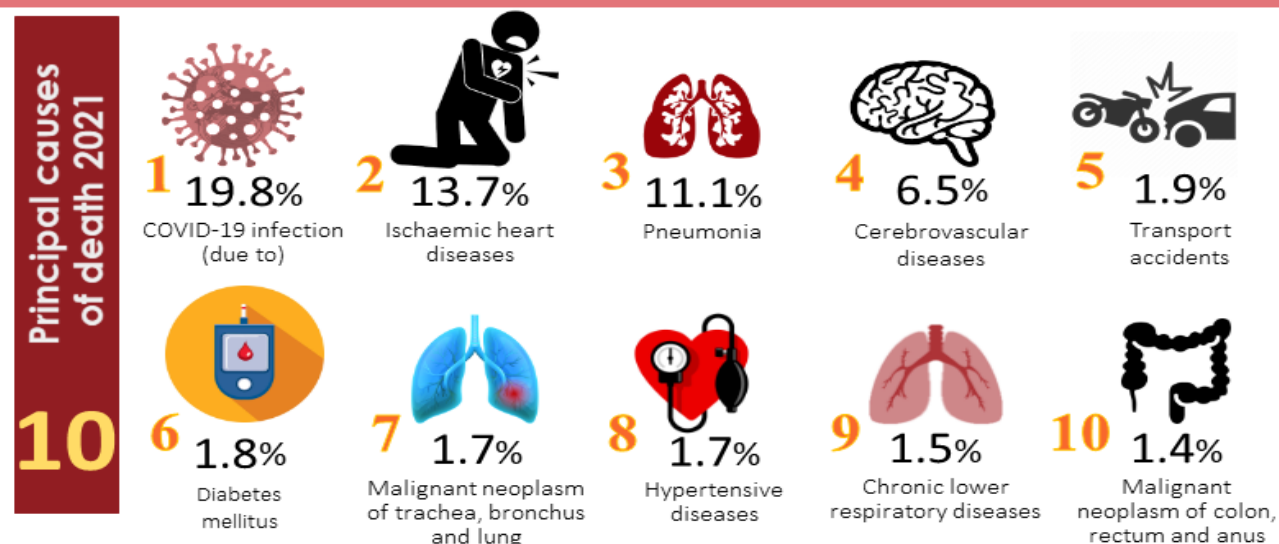


MINISTRY OF ECONOMY
DEPARTMENT OF STATISTICS MALAYSIA

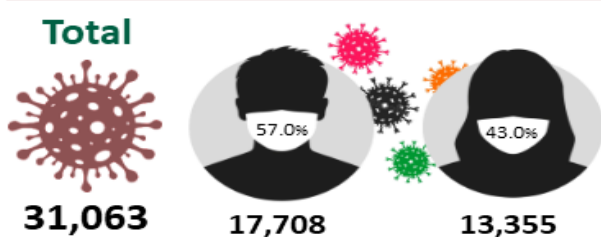
STATISTICS ON CAUSES OF DEATH, MALAYSIA, 2022



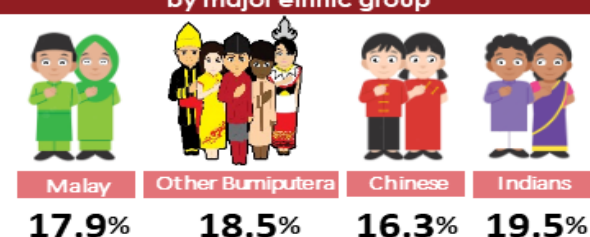
STATISTICS ON CAUSES OF DEATH, MALAYSIA, 2022



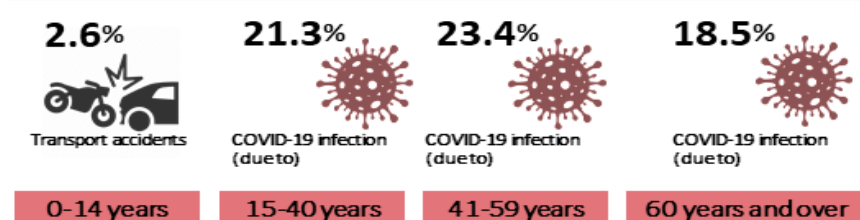
COVID-19 infection (due to)



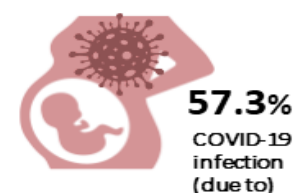
The causes of death COVID-19 infection (due to) by major ethnic group



The principal causes of death by age group



The principal causes of maternal death



Note: The analysis is based on medically certified causes of death

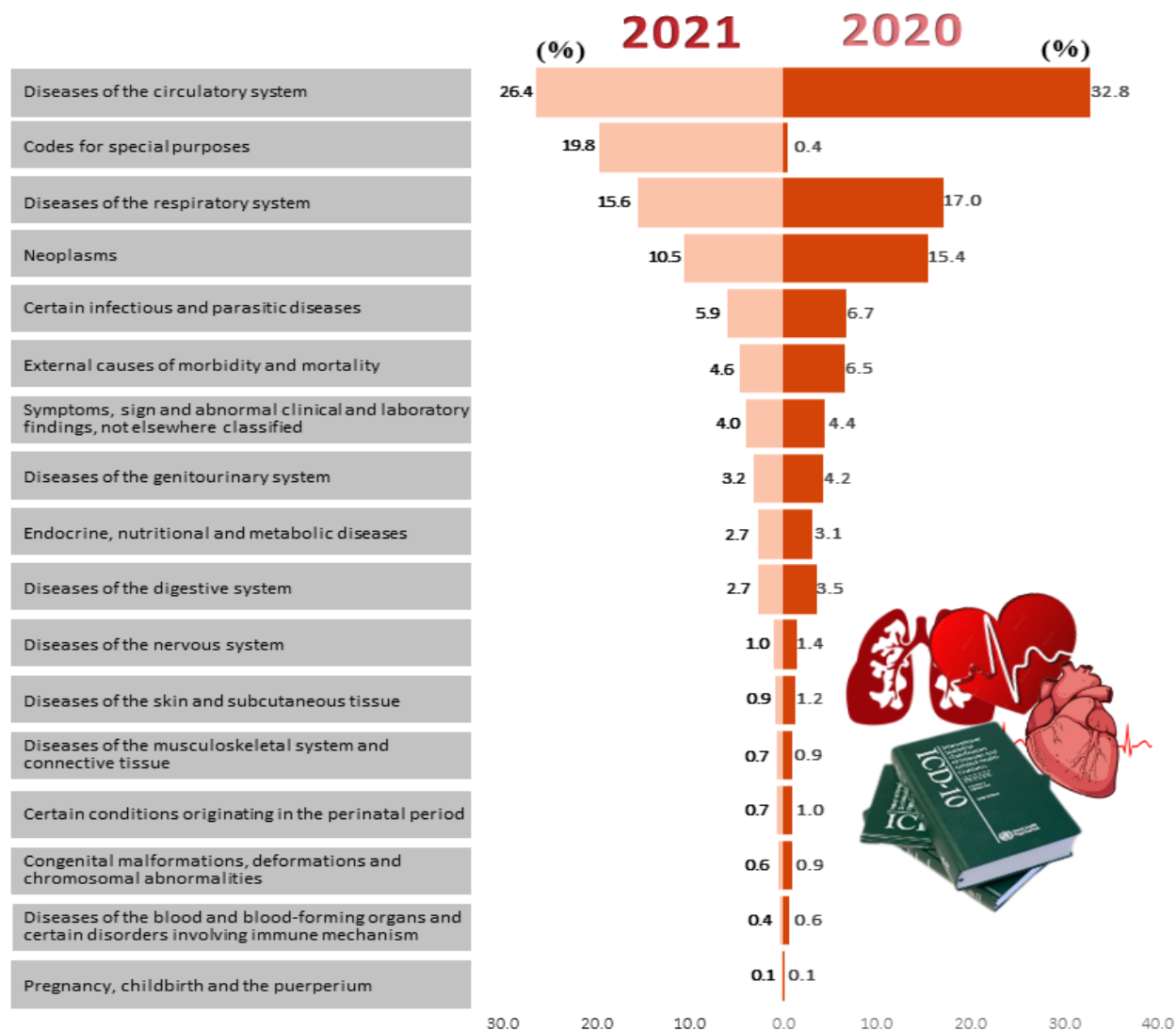
Source: Statistics on Causes of Death, Malaysia, 2022,
Department of Statistics Malaysia



PRIME MINISTER'S DEPARTMENT
DEPARTMENT OF STATISTICS MALAYSIA



Medically certified causes of death*, Malaysia, 2020-2021



Note: * The analysis is based on three (3) digits code of ICD 10

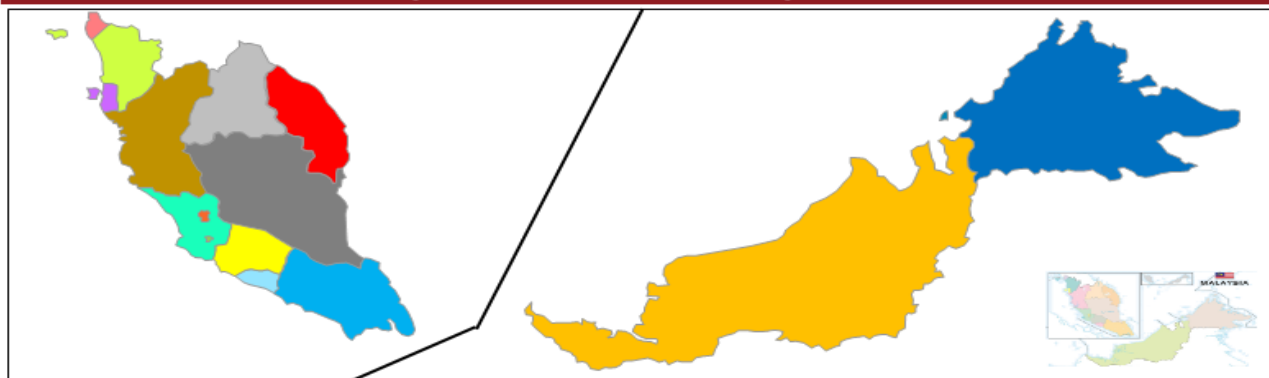
Source: Statistics on Causes of Death, Malaysia, 2022,
Department of Statistics Malaysia



PRIME MINISTER'S DEPARTMENT
DEPARTMENT OF STATISTICS MALAYSIA



3 Principal causes of death by state, 2021



JOHOR

Total deaths: 16,936

COVID-19 infection (due to) : 3,841 (22.7%)

Ischaemic heart diseases : 2,021 (11.9%)

Pneumonia : 1,984 (11.7%)



KEDAH

Total deaths: 14,897

COVID-19 infection (due to) : 2,470 (16.6%)

Ischaemic heart diseases : 2,243 (15.1%)

Pneumonia : 2,142 (14.4%)



KELANTAN

Total deaths: 9,724

COVID-19 infection (due to) : 2,041 (21.0%)

Ischaemic heart diseases : 1,286 (13.2%)

Pneumonia : 943 (9.7%)



MELAKA

Total deaths: 4,761

COVID-19 infection (due to) : 944 (19.8%)

Ischaemic heart diseases : 781 (16.4%)

Pneumonia : 424 (8.9%)



NEGERI SEMBILAN

Total deaths: 6,908

COVID-19 infection (due to) : 1,323 (19.2%)

Ischaemic heart diseases : 971 (14.1%)

Pneumonia : 641 (9.3%)



PAHANG

Total deaths: 6,789

COVID-19 infection (due to) : 1,027 (15.1%)

Ischaemic heart diseases : 802 (11.8%)

Pneumonia : 744 (11.0%)



PERAK

Total deaths: 15,425

COVID-19 infection (due to) : 3,017 (19.6%)

Ischaemic heart diseases : 1,616 (10.5%)

Pneumonia : 1,482 (9.6%)



PERLIS

Total deaths: 1,357

COVID-19 infection (due to) : 240 (17.7%)

Ischaemic heart diseases : 169 (12.5%)

Pneumonia : 139 (10.2%)



PULAU PINANG

Total deaths: 9,736

COVID-19 infection (due to) : 1,761 (18.1%)

Ischaemic heart diseases : 1,495 (15.4%)

Pneumonia : 1,184 (12.2%)



SABAH

Total deaths: 11,215

COVID-19 infection (due to) : 2,522 (22.5%)

Ischaemic heart diseases : 1,000 (8.9%)

Pneumonia : 687 (6.1%)



SARAWAK

Total deaths: 10,238

COVID-19 infection (due to) : 1,617 (15.8%)

Ischaemic heart diseases : 864 (8.4%)

Pneumonia : 747 (7.3%)



SELANGOR

Total deaths: 31,391

COVID-19 infection (due to) : 9,632 (30.7%)

Ischaemic heart diseases : 3,650 (11.6%)

Pneumonia : 3,620 (11.5%)



TERENGGANU

Total deaths: 6,667

COVID-19 infection (due to) : 1,017 (15.3%)

Ischaemic heart diseases : 752 (11.3%)

Pneumonia : 723 (10.8%)



W.P. KUALA LUMPUR

Total deaths: 10,520

COVID-19 infection (due to) : 2,682 (25.5%)

Ischaemic heart diseases : 1,476 (14.0%)

Pneumonia : 1,279 (12.2%)



W.P. LABUAN

Total deaths: 445

COVID-19 infection (due to) : 140 (31.5%)

Ischaemic heart diseases : 51 (11.5%)

Pneumonia : 30 (6.7%)



W.P. PUTRAJAYA

Total deaths: 242

COVID-19 infection (due to) : 30 (12.4%)

Ischaemic heart diseases : 27 (11.2%)

Pneumonia : 24 (9.9%)

Legend:

COVID-19 infection (due to) Ischaemic heart diseases Pneumonia
Hypertensive diseases Cerebrovascular diseases

Note: The analysis is based on medically certified causes of death

Source: Statistics on Causes of Death, Malaysia, 2022,
Department of Statistics Malaysia

- The number of deaths in 2021 increased 34.5 per cent from 166,970 deaths in 2020 due to excess death during COVID-19 pandemic. Medically certified deaths improved to 70.0 per cent (157,251) of 224,569 deaths while 30.0 per cent (67,318) was non-medically certified deaths.
- COVID-19 infection (due to) is the principal causes of death in Malaysia which recorded 31,063 deaths or 19.8 per cent of the 157,251 medically certified deaths in 2021. Ischaemic heart diseases was the second highest causes of death with 13.7 per cent followed by Pneumonia (11.1%), Cerebrovascular diseases (6.5%) and Transport accidents (1.9%).
- COVID-19 infection (due to) was the main causes of death for males and females with 17,708 and 13,355 deaths, respectively.
- The principal causes of death for major ethnic groups in Malaysia was COVID-19 infection (due to) with Malay (17.9%), Other Bumiputera (18.5%), Chinese (16.3%) and Indians (19.5%).
- All age groups recorded COVID-19 infection (due to) as the leading causes of death except for the age group of 0-14 years which recorded Transport accidents as the main causes of death.
- Nine states recorded COVID-19 infection (due to) as the principal causes of death in 2021 except for Kedah, Kelantan, Pahang, Perak, Perlis and Terengganu. These states recorded Ischaemic heart diseases as the principal causes of death. Meanwhile, only W.P. Putrajaya recorded Pneumonia as the principal causes of death at 12.4 per cent.

The full publication of the Statistics on Causes of Death, Malaysia, 2022 can be downloaded through [eStatistik](#) portal.

Released by:

DEPARTMENT OF STATISTICS MALAYSIA

27 October 2022

Contact person:

Baharudin Mohamad

Public Relation Officer

Strategic Communication and International Division

Department of Statistics, Malaysia

Tel : +603-8885 7942

Fax : +603-8888 9248

Email : baharudin[at]dosm.gov.my

Contact person:

Baharudin Mohamad

Public Relation Officer

Strategic Communication and International Division

Department of Statistics Malaysia

Tel : +603-8090 4681

Fax : +603-8888 9248

Email : baharudin[at]dosm.gov.my

Copyright ©2026 Department of Statistics Malaysia Official Portal. All Rights Reserved.