



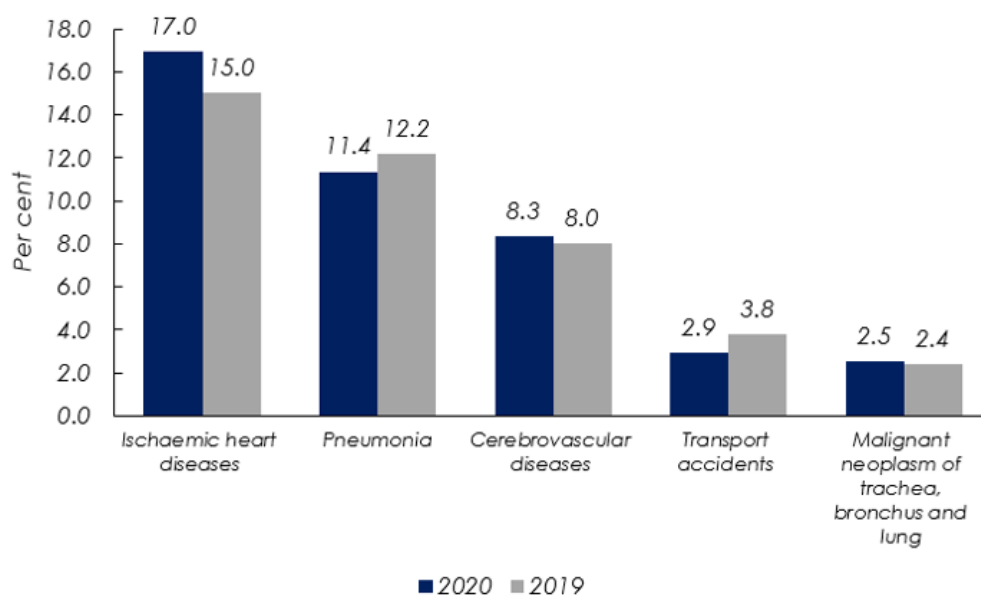
MINISTRY OF ECONOMY
DEPARTMENT OF STATISTICS MALAYSIA

STATISTICS ON CAUSES OF DEATH, MALAYSIA, 2021

i. Five principal causes of death

- **Ischaemic heart diseases remained as the principal causes of death**

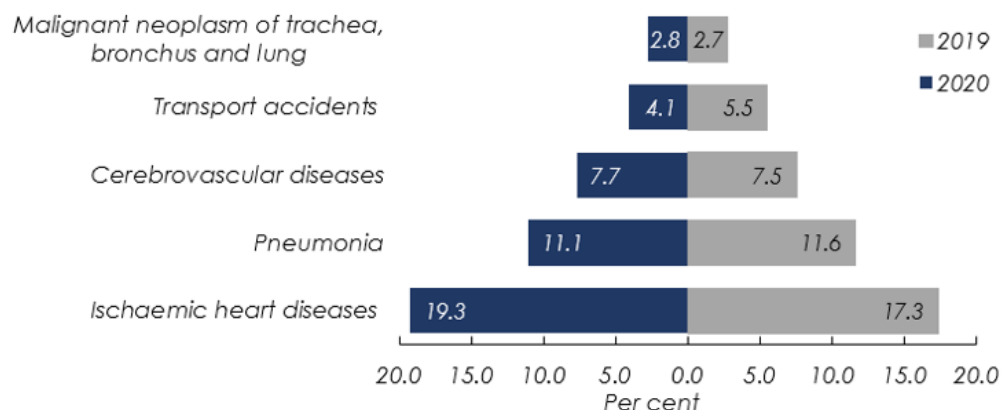
Ischaemic heart diseases remained as the principal causes of death, 17.0 per cent of the 109,155 medically certified deaths in 2020. This was followed by Pneumonia (11.4%), Cerebrovascular diseases (8.3%), Transport accidents (2.9%) and Malignant neoplasm of trachea, bronchus and lung (2.5%).



ii. Five principal causes of death by sex

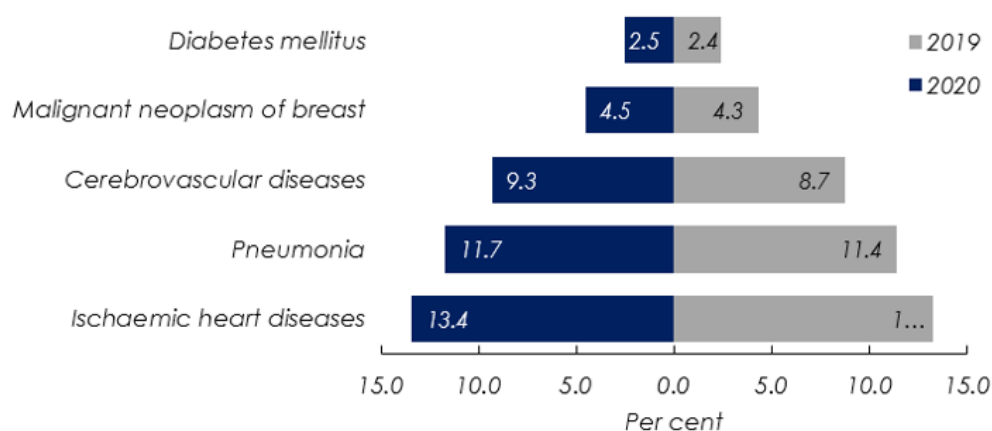
- **Ischaemic heart diseases remained as the principal causes of death for males**

Ischaemic heart diseases remained as the principal causes of death for males at 19.3 per cent of the 65,918 medically certified deaths in 2020. This was followed by Pneumonia (11.1%), Cerebrovascular diseases (7.7%), Transport accidents (4.1%) and Malignant neoplasm of trachea, bronchus and lung (2.8%).



- **Ischaemic heart diseases become the principal causes of death for females**

Ischaemic heart diseases become the principal causes of death for females at 13.4 per cent of the 43,237 medically certified deaths in 2020. This was followed by Pneumonia (11.7%), Cerebrovascular diseases (9.3%), Malignant neoplasm of breast (4.5%) and Diabetes mellitus (2.5%). Previously, Pneumonia was the principal causes of death for females.

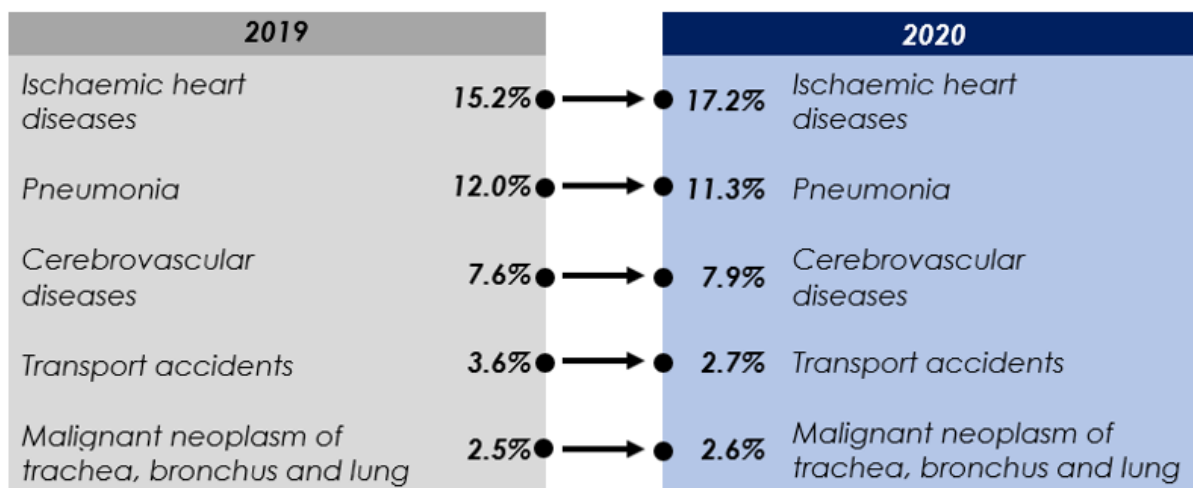


iii. Five principal causes of death by stratum

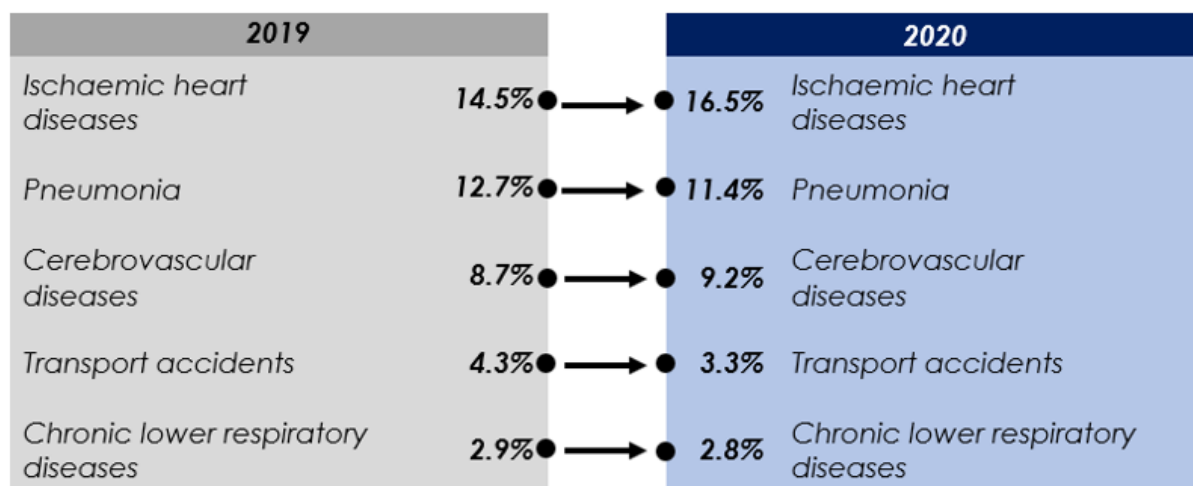
The principal causes of death in urban and rural areas in 2020 was Ischaemic heart diseases at 17.2 per cent and 16.5 per cent, respectively. Ischaemic heart diseases become the principal causes of death in rural areas starting 2018 after Pneumonia was the principal causes of death in 2015 to 2017.



Urban



Rural



iv. Five principal causes of death by major ethnic group

- **Ischaemic heart diseases remained as the principal causes of death for Bumiputera**

Ischaemic heart diseases remained as the principal causes of death for Bumiputera at 16.6 per cent of the 69,612 medically certified deaths in 2020. This was followed by Pneumonia (11.1%), Cerebrovascular diseases (9.1%), Transport accidents (3.2%) and Chronic lower respiratory diseases (2.4%).

- **Ischaemic heart diseases remained as the principal causes of death for Chinese**

Ischaemic heart diseases remained as the principal causes of death for Chinese at 16.0 per cent of the 27,216 medically certified deaths in 2020. This was followed by Pneumonia (12.1%), Cerebrovascular diseases (7.3%), Malignant neoplasm of trachea, bronchus and lung (3.9%) and Malignant neoplasm of colon, rectum and anus (3.3%).

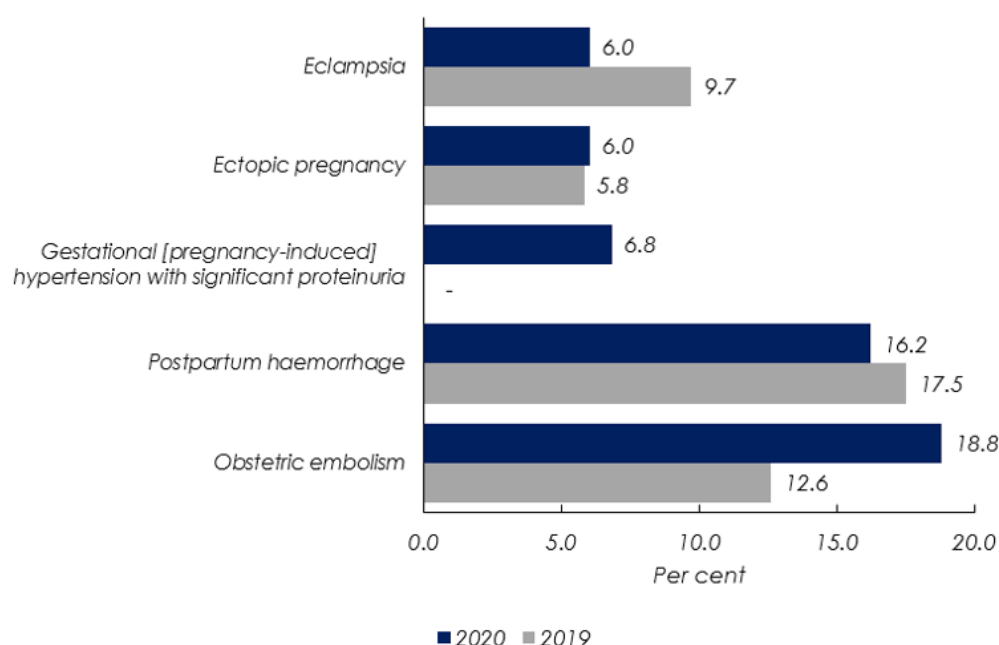
- **Ischaemic heart diseases remained as the principal causes of death for Indians**

Ischaemic heart diseases remained as the principal causes of death for Indians at 22.8 per cent of the 9,598 medically certified deaths in 2020. This was followed by Pneumonia (10.7%), Cerebrovascular diseases (6.0%), Transport accidents (4.3%) and Diseases of the liver (2.9%).

v. Five principal causes of death for maternal

- **Obstetric embolism recorded as the principal causes of death for maternal**

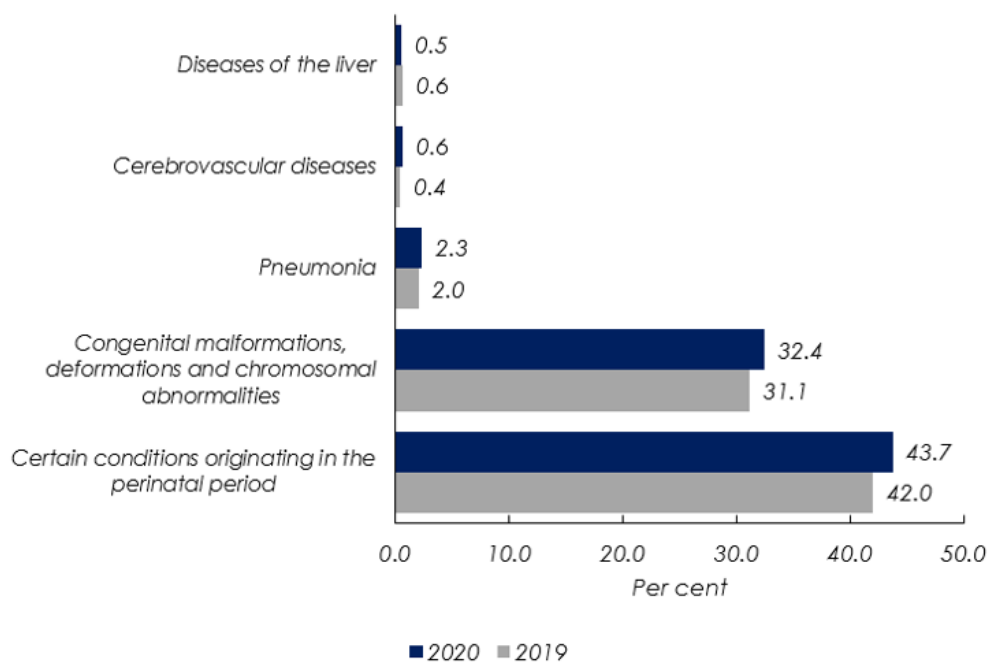
Obstetric embolism was recorded as the principal causes of death for maternal in 2020 at 18.8 per cent followed by Postpartum haemorrhage (16.2%), Gestational [pregnancy-induced] hypertension with significant proteinuria (6.8%), Ectopic pregnancy (6.0%) and Eclampsia (6.0%).



vi. Five principal causes of death for infant

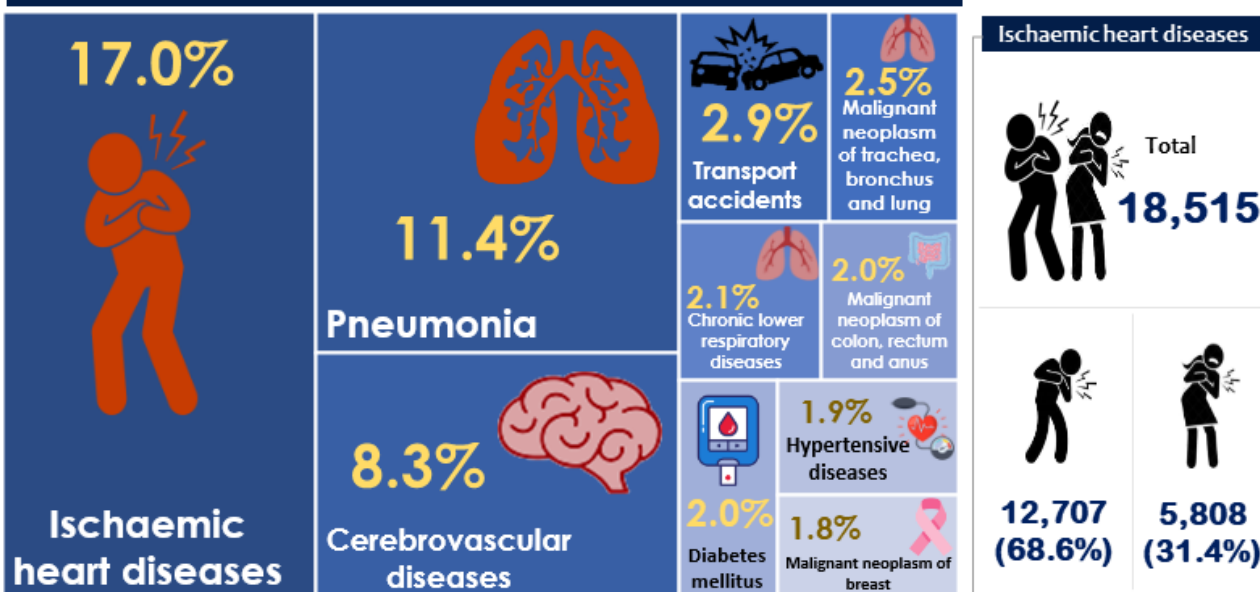
- **Certain conditions originating in the perinatal period remained as the principal causes of death for infant**

Certain conditions originating in the perinatal period remained as the principal causes of death for infant in 2020 at 43.7 per cent followed by Congenital malformations, deformations and chromosomal abnormalities (32.4%), Pneumonia (2.3%), Cerebrovascular diseases (0.6%) and Diseases of the liver (0.5%).

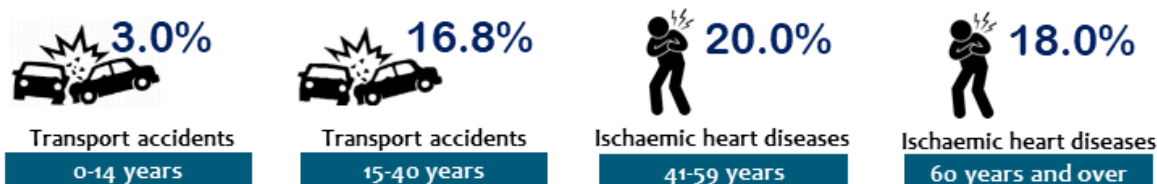


STATISTICS ON CAUSES OF DEATH, MALAYSIA, 2021

10 Principal Causes of Death 2020



The principal causes of death by age group



The causes of death due to Ischaemic heart diseases by major ethnic group



The principal causes of maternal death



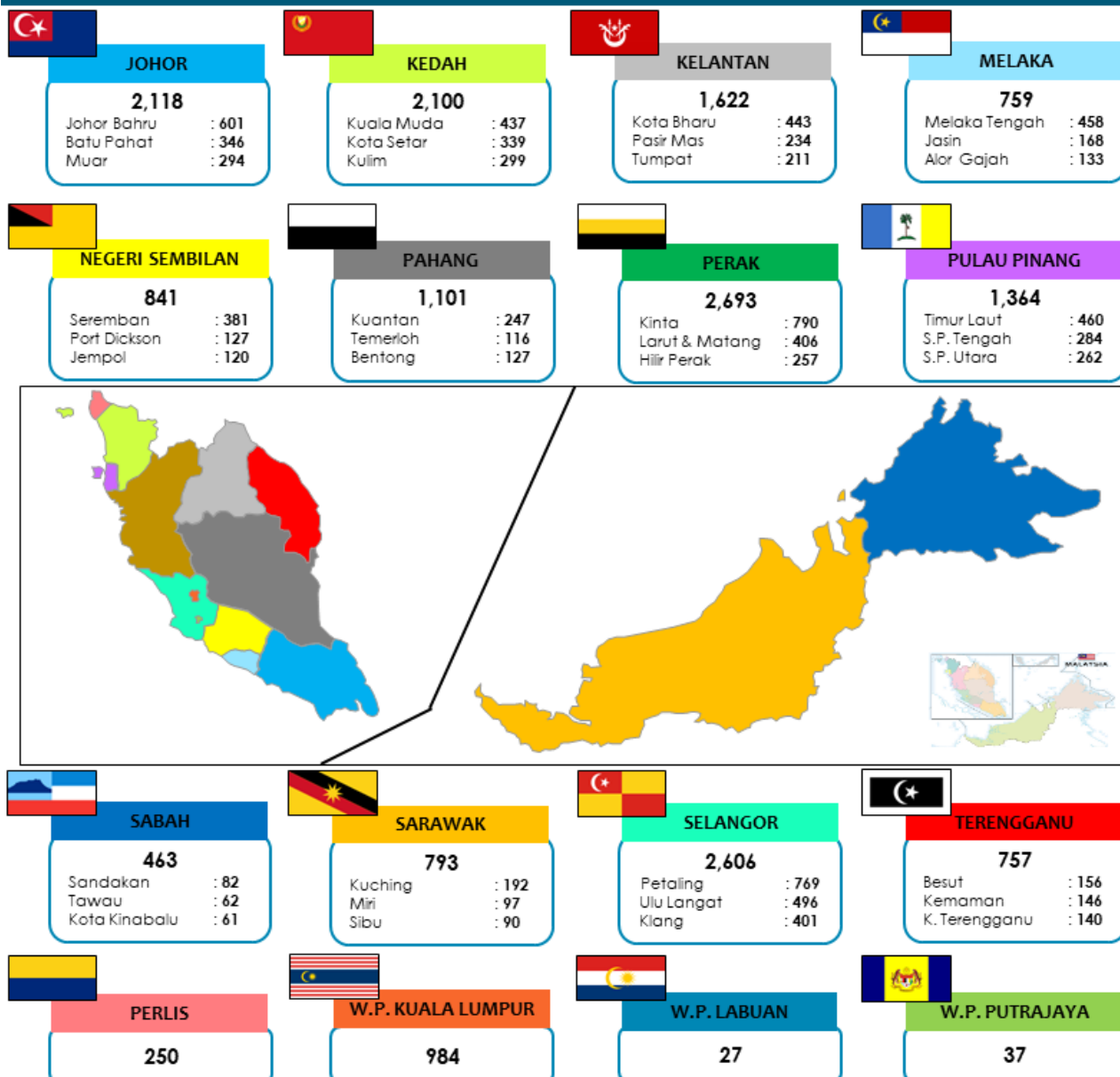
Scan the QR code below using your smartphone



Note: The analysis is based on medically certified causes of death

Source: Statistics on Causes of Death, Malaysia, 2021,
Department of Statistics Malaysia

Top 3 Administrative Districts death due to Ischaemic heart diseases



Notes:

SP: Seberang Perai
K: Kuala
W.P.: Wilayah Persekutuan

Source: Statistics on Causes of Death, Malaysia, 2021,
Department of Statistics Malaysia

Released By:

DATO' SRI DR. MOHD UZIR MAHIDIN
CHIEF STATISTICIAN MALAYSIA
DEPARTMENT OF STATISTICS, MALAYSIA

#myHariBulan# #myBulan# #myTahun#

Contact person:

Mohd Yusrizal bin Ab. Razak

Public Relation Officer

Strategic Communication and International Division

Department of Statistics, Malaysia

Tel : +603-8885 7942

Fax : +603-8888 9248

E-mail : yusrizal.razak[at]dosm.gov.my

Contact person:

Baharudin Mohamad

Public Relation Officer

Strategic Communication and International Division

Department of Statistics Malaysia

Tel : +603-8090 4681

Fax : +603-8888 9248

Email : baharudin[at]dosm.gov.my

Copyright ©2026 Department of Statistics Malaysia Official Portal. All Rights Reserved.