



MINISTRY OF ECONOMY  
DEPARTMENT OF STATISTICS MALAYSIA

---

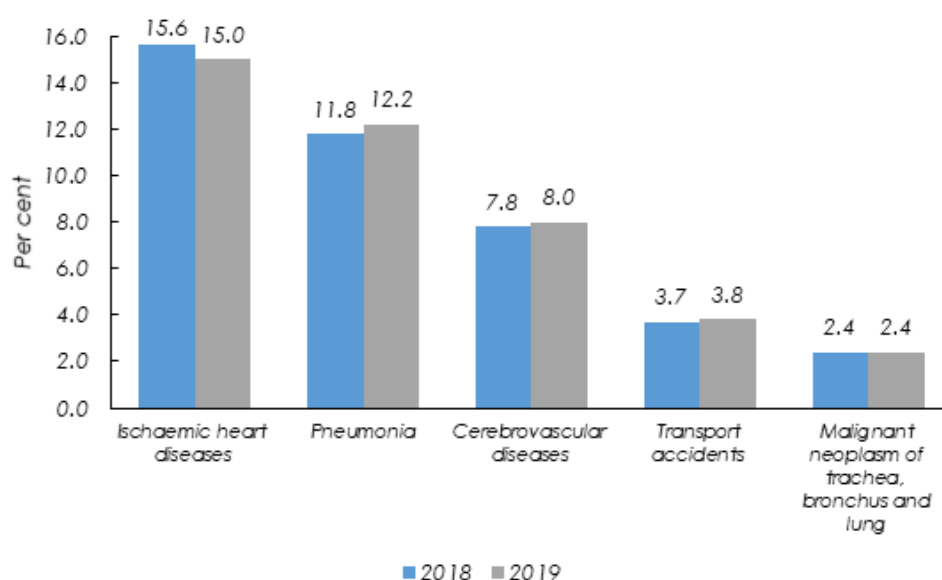
## STATISTICS ON CAUSES OF DEATH, MALAYSIA, 2020

---

### i. Five principal causes of death

- **Ischaemic heart diseases remained as the principal causes of death**

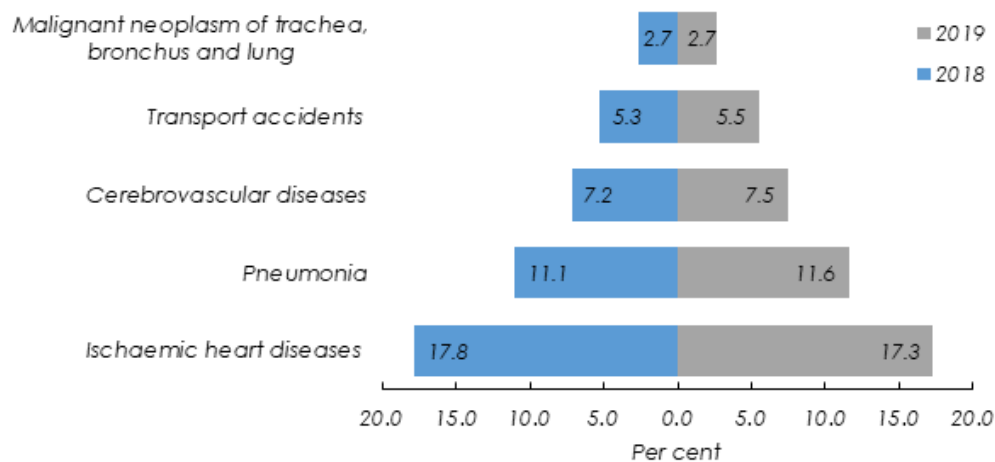
Ischaemic heart diseases remained as the principal causes of death, 15.0 per cent of the 109,164 medically certified deaths in 2019. This was followed by Pneumonia (12.2%), Cerebrovascular diseases (8.0%), Transport accidents (3.8%) and Malignant neoplasm of trachea, bronchus and lung (2.4%).



## ii. Five principal causes of death by sex

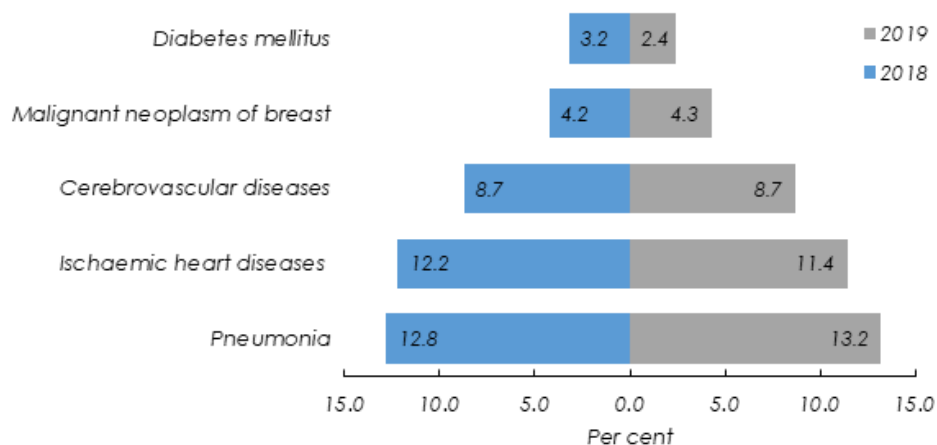
- **Ischaemic heart diseases remained as the principal causes of death for males**

Ischaemic heart diseases remained as the principal causes of death for males (17.3% in 2019). This is followed by Pneumonia (11.6%), Cerebrovascular diseases (7.5%), Transport accidents (5.5%) and Malignant neoplasm of trachea, bronchus and lung (2.7%).



- **Pneumonia remained as the principal causes of death for females**

Pneumonia remained as the principal causes of death for females at 13.2 per cent, followed by Ischaemic heart diseases (11.4%), Cerebrovascular diseases (8.7%), Malignant neoplasm of breast (4.3%) and Diabetes mellitus (2.4%).

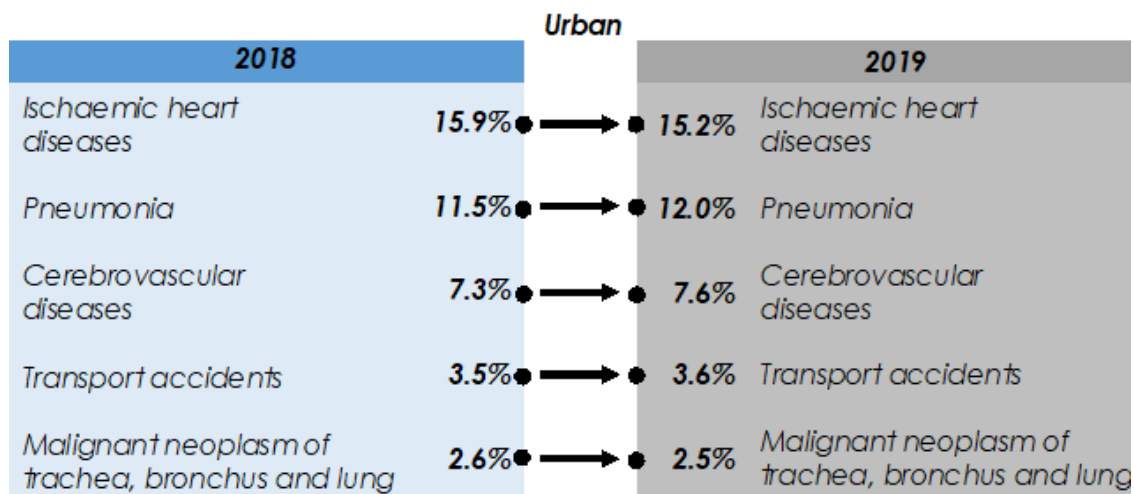


### iii. Five principal causes of death by stratum

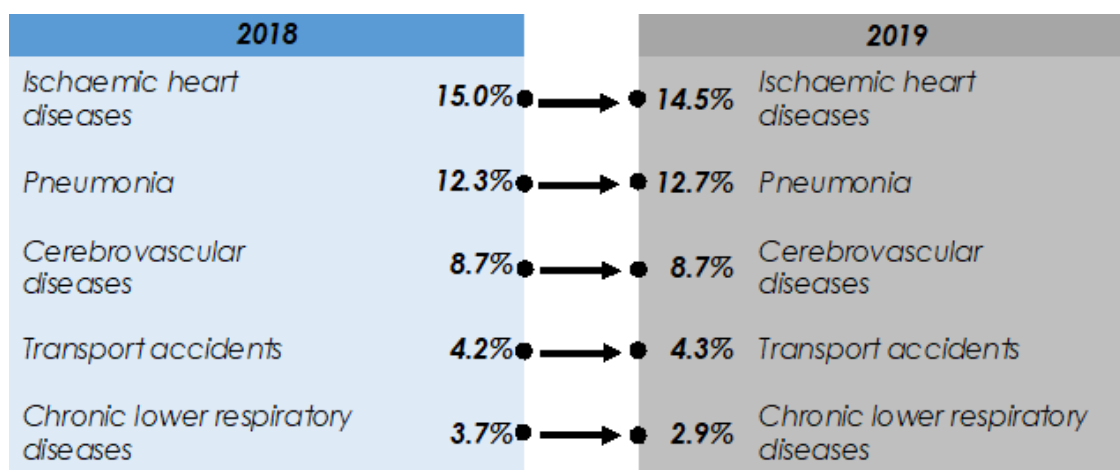
The principal causes of death in urban and rural areas in 2019 was Ischaemic heart diseases, recorded 15.2 per cent and 14.5 per cent, respectively.



Urban



Rural



#### iv. Five principal causes of death by major ethnic group

- **Ischaemic heart diseases remained as the principal causes of death for Bumiputera**

Ischaemic heart diseases remained as the principal causes of death for Bumiputera at 14.5 per cent, followed by Pneumonia (12.4%), Cerebrovascular diseases (8.4%), Transport accidents (4.3%) and Chronic lower respiratory diseases (2.4%).

- **Ischaemic heart diseases remained as the principal causes of death for Chinese**

Ischaemic heart diseases remained as the principal causes of death for Chinese at 14.0 per cent, followed by Pneumonia (12.2%), Cerebrovascular diseases (7.5%), Malignant neoplasm of trachea, bronchus and lung (3.7%) and Malignant neoplasm of colon, rectum and anus (2.8%).

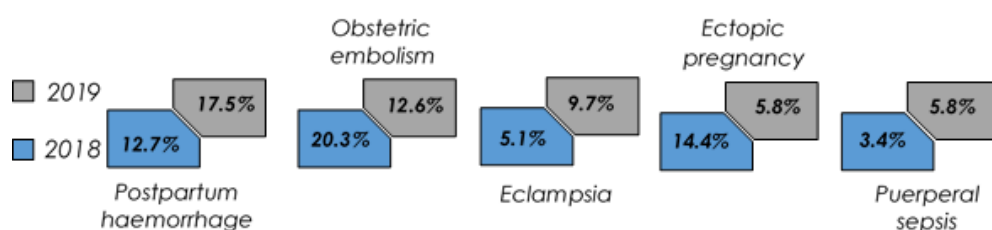
- **Ischaemic heart diseases remained as the principal causes of death for Indians**

Ischaemic heart diseases remained as the principal causes of death for Indians at 20.4 per cent followed by Pneumonia (10.9%), Cerebrovascular diseases (6.1%), Transport accidents (5.1%) and Diseases of the liver (2.7%).

#### v. Five principal causes of death for maternal

- **Postpartum haemorrhage recorded as the principal causes of death for maternal**

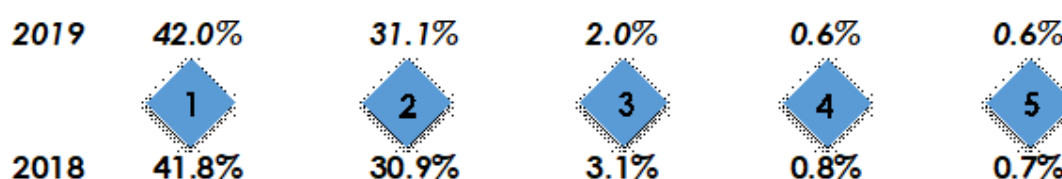
Postpartum haemorrhage was recorded as the principal causes of death for maternal in 2019 at 17.5 per cent followed by Obstetric embolism (12.6%), Eclampsia (9.7%), Ectopic pregnancy (5.8%) and Puerperal sepsis (5.8%).



#### vi. Five principal causes of death for infant

- **Certain conditions originating in the perinatal period remained as the principal causes of death for infant**

Certain conditions originating in the perinatal period remained as the principal causes of death for infant in 2019 at 42.0% followed by Congenital malformations, deformations and chromosomal abnormalities (31.1%), Pneumonia (2.0%), Meningitis (0.6%) and Chronic lower respiratory diseases (0.6%).



**1** Certain conditions originating in the perinatal period

**2** Congenital malformations, deformations and chromosomal abnormalities

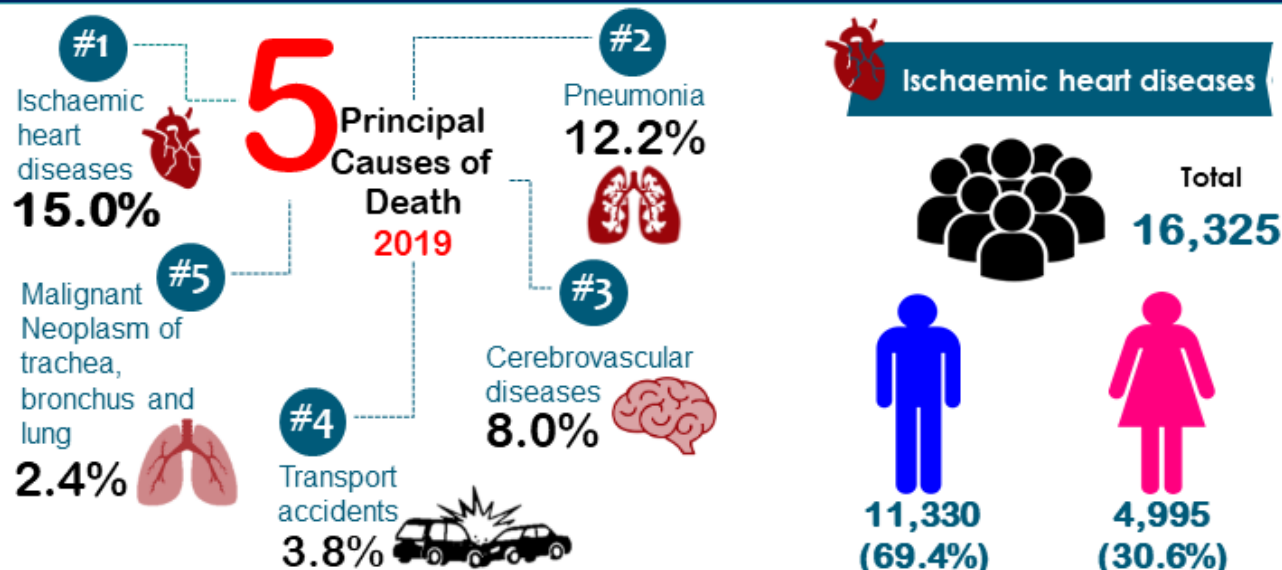
**3** Pneumonia

**4** Meningitis

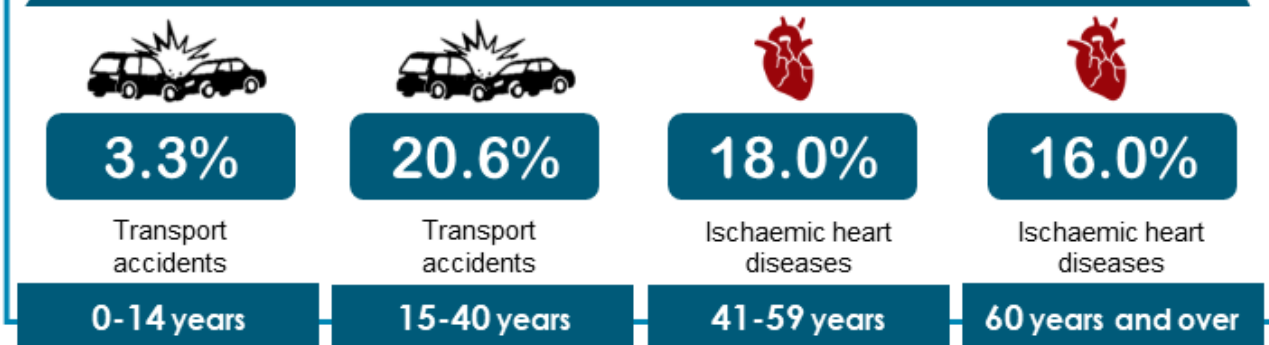
**5** Chronic lower respiratory diseases



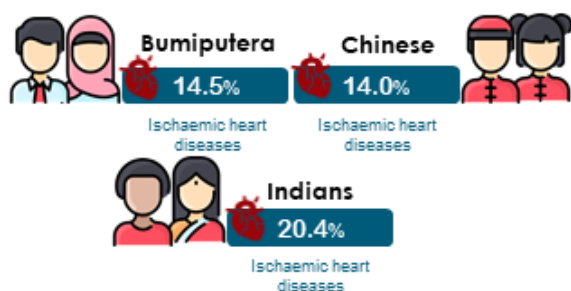
## STATISTICS ON CAUSES OF DEATH, MALAYSIA, 2020



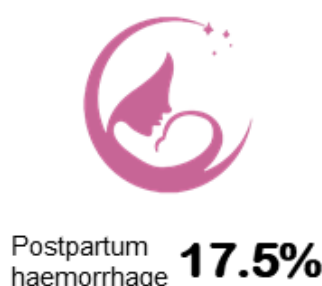
## The principal causes of death by age group



## The principal causes of death by ethnic groups



## The principal causes of maternal death



Scan the QR code to see interesting info

<https://bppd-dosm.netlify.app/>

Note: The analysis is based on medically certified causes of death

Source: Statistics on Causes of Death, Malaysia, 2020  
Department of Statistics Malaysia



## Top three administrative districts that recorded causes of death due to Ischaemic heart diseases

**JOHOR****2,384**

Johor Bahru	: 659
Batu Pahat	: 625
Muar	: 233

**KEDAH****1,486**

Kuala Muda	: 388
Kota Setar	: 231
Kulim	: 206

**KELANTAN****1,270**

Kota Bharu	: 404
Tumpat	: 189
Pasir Mas	: 139

**MELAKA****659**

Melaka Tengah	: 360
Alor Gajah	: 153
Jasin	: 146

**NEGERI SEMBILAN****710**

Seremban	: 363
Jempol	: 84
Port Dickson	: 83

**PAHANG****710**

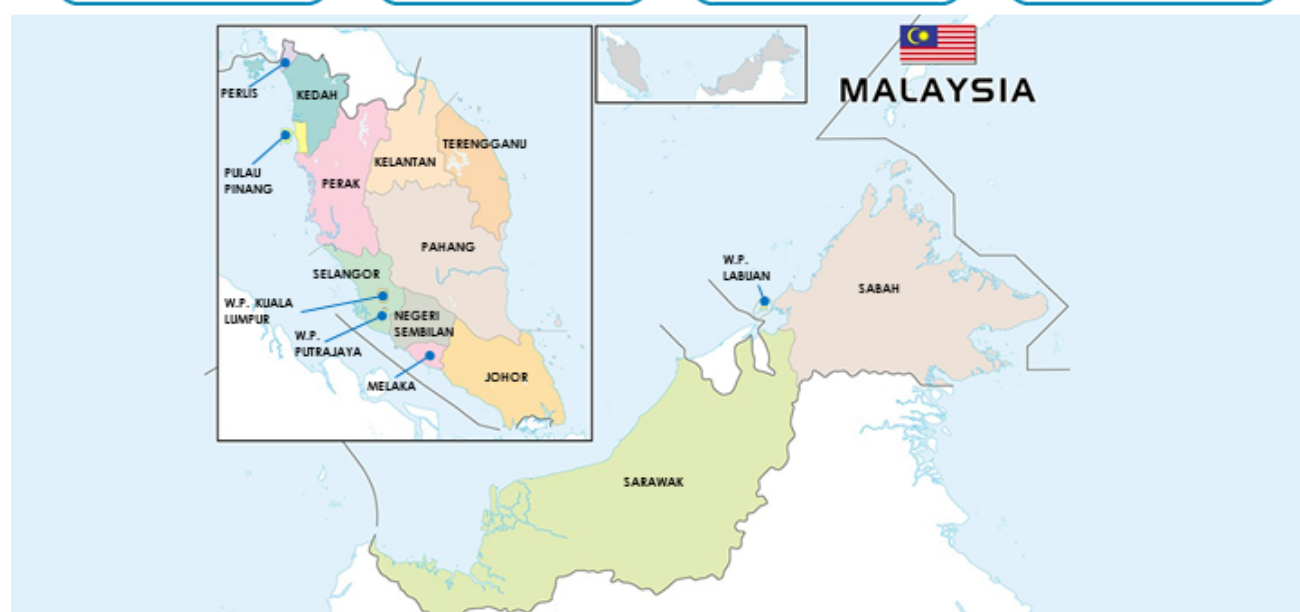
Kuantan	: 118
Temerloh	: 108
Maran	: 78

**PERAK****2,156**

Kinta	: 612
Larut & Matang	: 370
Manjung	: 224

**PULAU PINANG****1,214**

Timur Laut	: 658
S.P. Tengah	: 232
S.P. Utara	: 226

**SABAH****455**

Kota Kinabalu	: 57
Sandakan	: 57
Tawau	: 49

**SARAWAK****699**

Kuching	: 167
Miri	: 82
Bintulu	: 59

**SELANGOR****2,909**

Petaling	: 835
Ulu Langat	: 640
Klang	: 483

**TERENGGANU****619**

Besut	: 137
K. Terengganu	: 113
Dungun	: 98

**PERLIS****180****W.P. KUALA LUMPUR****828****W.P. LABUAN****22****W.P. PUTRAJAYA****24****Notes:**

S.P.: Seberang Perai

K.: Kuala

W.P.: Wilayah Persekutuan

Source: Statistics on Causes of Death, Malaysia, 2020  
Department of Statistics Malaysia

**Released By:**

**DATO' SRI DR. MOHD UZIR MAHIDIN  
CHIEF STATISTICIAN MALAYSIA  
DEPARTMENT OF STATISTICS, MALAYSIA**

**#myHariBulan# #myBulan# #myTahun#**

**Contact person:**

**Mohd Yusrizal bin Ab. Razak**

Public Relation Officer

Strategic Communication and International Division

Department of Statistics, Malaysia

Tel : +603-8885 7942

Fax : +603-8888 9248

E-mail : yusrizal.razak[at]dosm.gov.my

**Contact person:**

Baharudin Mohamad

Public Relation Officer

Strategic Communication and International Division

Department of Statistics Malaysia

Tel : +603-8090 4681

Fax : +603-8888 9248

Email : baharudin[at]dosm.gov.my

**Copyright ©2025 Department of Statistics Malaysia Official Portal. All Rights Reserved.**