



MINISTRY OF ECONOMY  
DEPARTMENT OF STATISTICS MALAYSIA

## SOCIAL STATISTICS BULLETIN, MALAYSIA, 2016

### INTRODUCTION

Social Statistics Bulletin, Malaysia, 2016 presents selected social statistics as the basic indicators for measuring the quality of life and well-being of the population at the national and state level. The main areas covered are population, housing, health, education, employment, social services, public safety and communication & recreation. Selected social statistics on health, education and public safety are highlighted as follows:

#### A) HEALTH

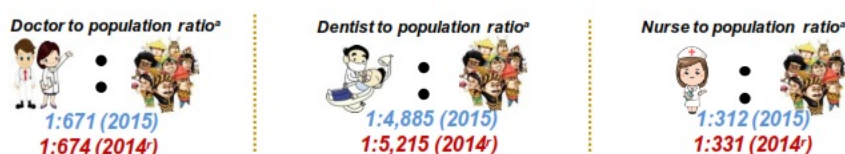
##### Doctor to Population Ratio

The number of doctors increased from 45,565 (2014) to 46,491 persons in 2015. This showed an increase of 2.0 per cent compared to 2014. Doctor to population ratio for 2015 was 671 persons compared to 674 persons in 2014.

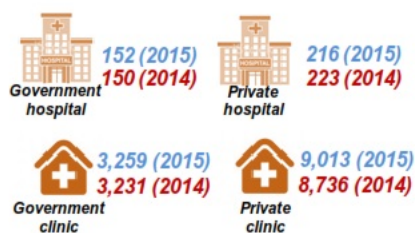
##### Dentist to Population Ratio

In 2015, the number of dentists showed an increase of 8.4 per cent from 5,888 persons in 2014 to 6,384 persons. However, dentist to population ratio decreased from 5,215 persons (2014) to 4,885 persons (2015).

**Diagram 1: Medical personnel to population ratio, Malaysia, 2014<sup>r</sup> and 2015**



**Diagram 2: Number of hospitals and clinics, Malaysia, 2014 and 2015**



**Diagram 3: Number of hospital beds<sup>a</sup> per 100,000 population, Malaysia, 2014 and 2015**



Source: Health Informatics Centre, Ministry of Health, Malaysia

**Note:**

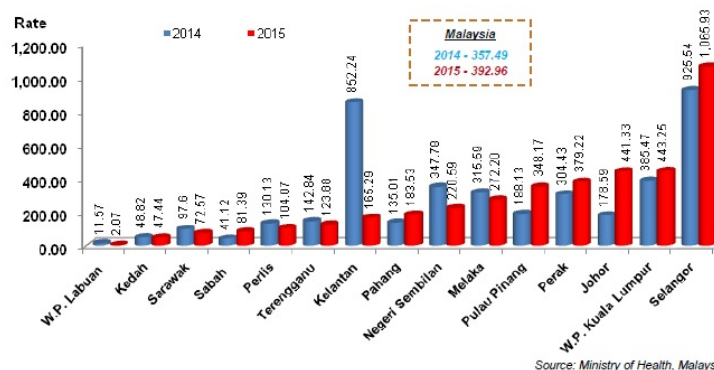
<sup>a</sup> The calculation of ratio was based on the latest current population estimates by Department of Statistics, Malaysia

<sup>r</sup> Revised

## Dengue Fever

Incidence rate for dengue fever increased from 357.49 per 100,000 population (2014) to 392.96 per 100,000 population (2015). Three states recorded incidence rates for dengue fever which exceeded the national level, namely Selangor (1,065.93 per 100,000 population), W.P. Kuala Lumpur (443.25 per 100,000 population) and Johor (441.33 per 100,000 population).

Chart 1: Incidence rate for dengue fever per 100,000 population by state, Malaysia 2014 and 2015



Note: W.P. Kuala Lumpur include W.P. Putrajaya

## B) EDUCATION

### Student Teacher Ratio in Primary School

The number of teacher in government and government-aided primary schools was 233,365 in 2015, an increase of 1,133 teachers compared to 232,232 in 2014. Student teacher ratio in government and government-aided primary schools for Malaysia in 2014 and 2015 were recorded as 11.7 and 11.5 respectively.

### Student Teacher Ratio in Secondary School

The number of teacher in government and government-aided secondary schools was 181,975 in 2015, an increase of 1,751 teachers compared to 180,224 in 2014. Student teacher ratio in government and government-aided secondary schools in Malaysia decreased from 12.5 (2014) to 12.0 (2015).

**Diagram 4: Number of school, teacher and student, Malaysia, 2014 and 2015**

	Number of schools		Number of teachers		Number of students	
YEAR	2015	2014	2015	2014	2015	2014
<b>PRIMARY SCHOOL</b>						
Government & government-aided	7,763	7,758	233,365	232,232	2,683,992	2,709,340
Private	114	106	2,838	3,024	35,052	34,186
<b>SECONDARY SCHOOL</b>						
Government & government-aided	2,397	2,375	181,975	180,224	2,181,840	2,257,712
Private	164	160	6,932	7,159	108,891	109,910
<b>OTHER EDUCATION INSTITUTE</b>						
International	113	100	4,261	4,543	46,326	41,754
Expatriate	13	14	395	404	4,587	4,778
Special education	14	11	156	151	804	840



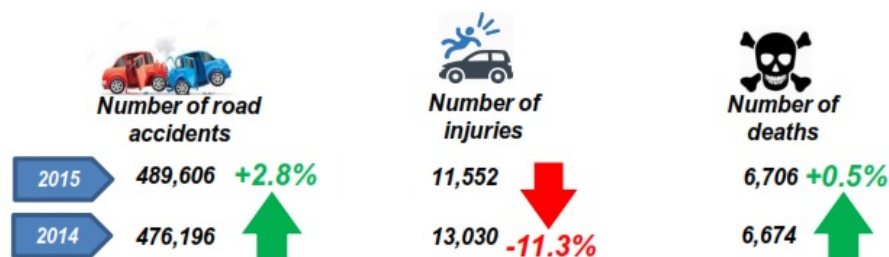
Source: Ministry of Education, Malaysia

## C) PUBLIC SAFETY

### Road Accidents

The statistics of road accidents reported an increase for the period of 2014 (476,196 cases) until 2015 (489,606 cases). However, the number of injuries in road accident reported showed a decrease from 13,030 (2014) to 11,552 (2015). Number of death in road accident reported was 6,674 cases in 2014 and 6,706 cases in 2015.

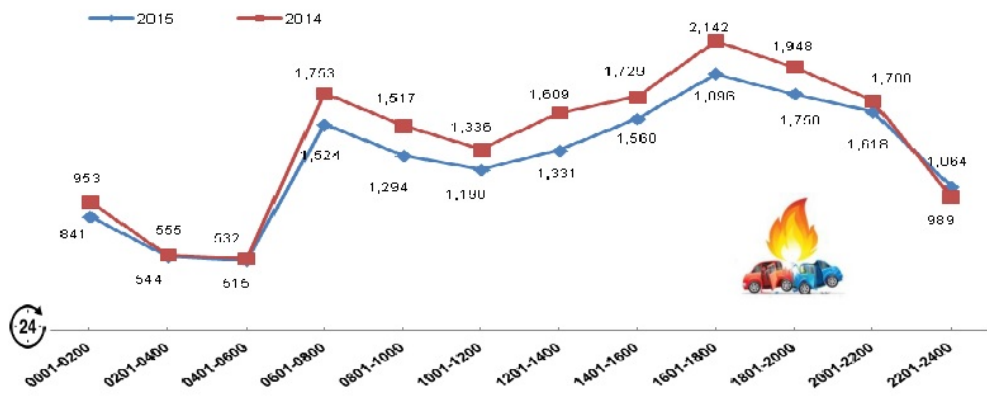
**Diagram 5: Number of road accidents, injuries and deaths reported, Malaysia, 2014 and 2015**



Source: Investigation and Enforcement of the Traffic Department, Royal Malaysia Police

In 2015, the highest number of incidents in road accidents occurred from 4.01–6.00 pm with 1,896 cases. Meanwhile, the lowest number of incident in road accidents was from 4.01–6.00 am with 515 cases.

**Chart 2: Number of incidents in road accident reported by time, Malaysia, 2014 and 2015**



Source: Royal Malaysia Police

## HEALTH

### Medical personnel to population ratio, Malaysia, 2014<sup>r</sup> and 2015

#### Doctor to population ratio<sup>a</sup>



#### Dentist to population ratio<sup>a</sup>



#### Nurse to population ratio<sup>a</sup>



### Number of hospitals and clinics, Malaysia, 2014 and 2015



### Number of hospital beds<sup>a</sup> per 100,000 population, Malaysia, 2014 and 2015



Note:

\* The calculation of ratios was based on the latest current population estimates, Department of Statistics, Malaysia

<sup>r</sup> Revised

Source: Health Informatics Centre, Ministry of Health, Malaysia

## EDUCATION

### Number of schools, teachers and students, Malaysia, 2014 and 2015

Number of schools

Number of teachers

Number of students

YEAR	2015	2014	2015	2014	2015	2014
<b>PRIMARY SCHOOL</b>						
Government & government-aided	7,763	7,758	233,365	232,232	2,683,992	2,709,340
Private	114	106	2,838	3,024	35,052	34,186
<b>SECONDARY SCHOOL</b>						
Government & government-aided	2,397	2,375	181,975	180,224	2,181,840	2,257,712
Private	164	160	6,932	7,159	108,891	109,910
<b>OTHER EDUCATION INSTITUTE</b>						
International	113	100	4,261	4,543	46,326	41,754
Expatriate	13	14	395	404	4,587	4,778
Special education	14	11	156	151	804	840



Source: Ministry of Education, Malaysia



## PUBLIC SAFETY

Number of road accidents, injuries and deaths reported, Malaysia, 2014 and 2015



Source: Investigation and Enforcement of the Traffic Department, Royal Malaysia Police

Property and violent crime reported, Malaysia, 2014 and 2015



Source: Crime Investigation Department, Royal Malaysia Police

The detailed information regarding this report can be accessed through the [eStatistik](#) application in the website of Department of Statistics, Malaysia, [www.dosm.gov.my](http://www.dosm.gov.my).

**RELEASED BY:**

**THE OFFICE OF CHIEF STATISTICIAN MALAYSIA**

**DEPARTMENT OF STATISTICS, MALAYSIA**

**15 December 2016**

**Released By:**

**THE OFFICE OF CHIEF STATISTICIAN MALAYSIA**

**DEPARTMENT OF STATISTICS, MALAYSIA**

**#myHariBulan# #myBulan# #myTahun#**

**Contact person:**

Ho Mei Kei

Public Relation Officer

Corporate and User Services Division

Department of Statistics, Malaysia

**Tel :** +603-8885 7942

**Fax :** +603-8888 9248

**Email :** mkho[at]stats.gov.my

**Contact person:**

Baharudin Mohamad

Public Relation Officer

Strategic Communication and International Division

Department of Statistics Malaysia

**Tel :** +603-8090 4681

Fax : +603-8888 9248

Email : baharudin[at]dosm.gov.my

**Copyright ©2025 Department of Statistics Malaysia Official Portal. All Rights Reserved.**