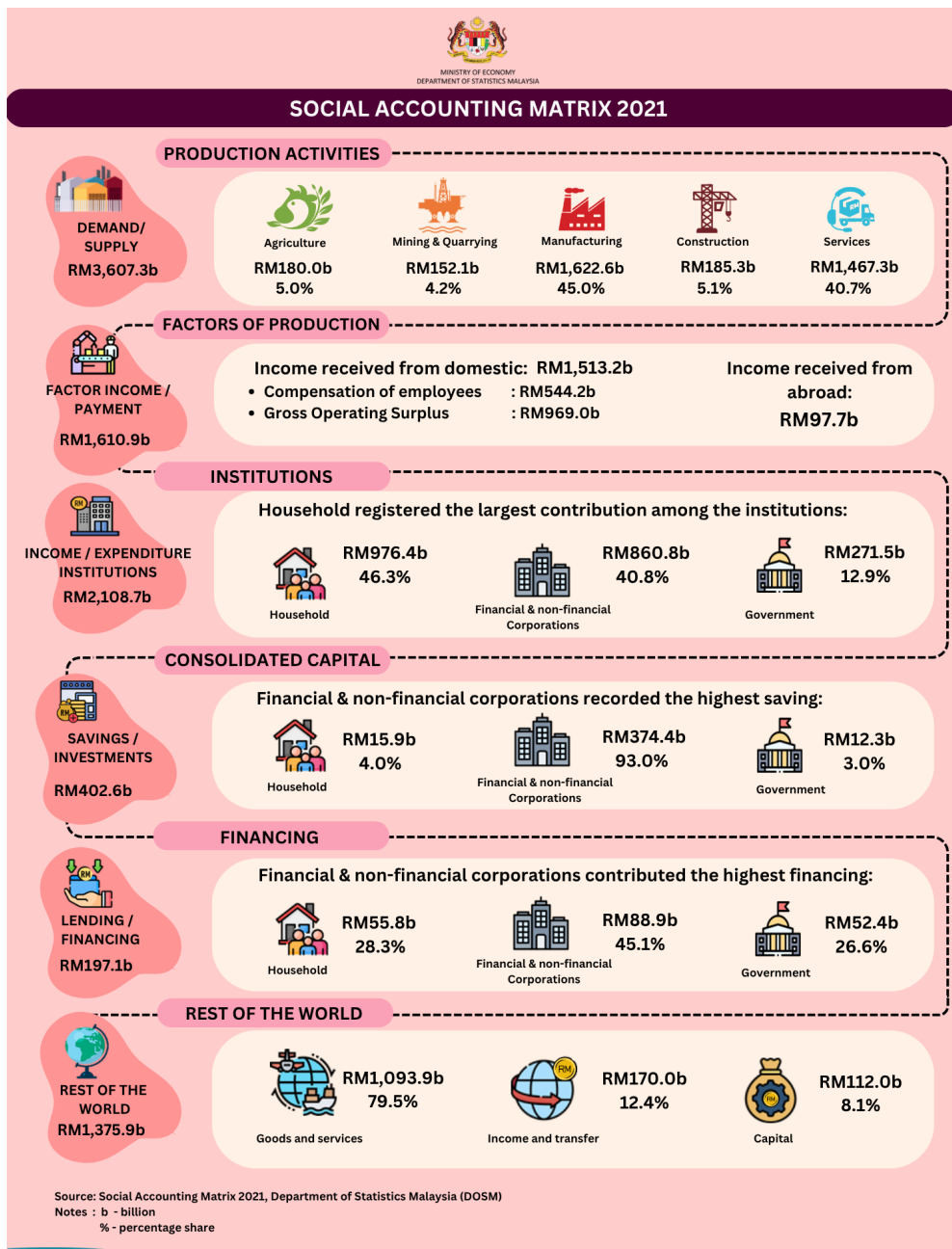




MINISTRY OF ECONOMY
DEPARTMENT OF STATISTICS MALAYSIA

SOCIAL ACCOUNTING MATRIX 2021



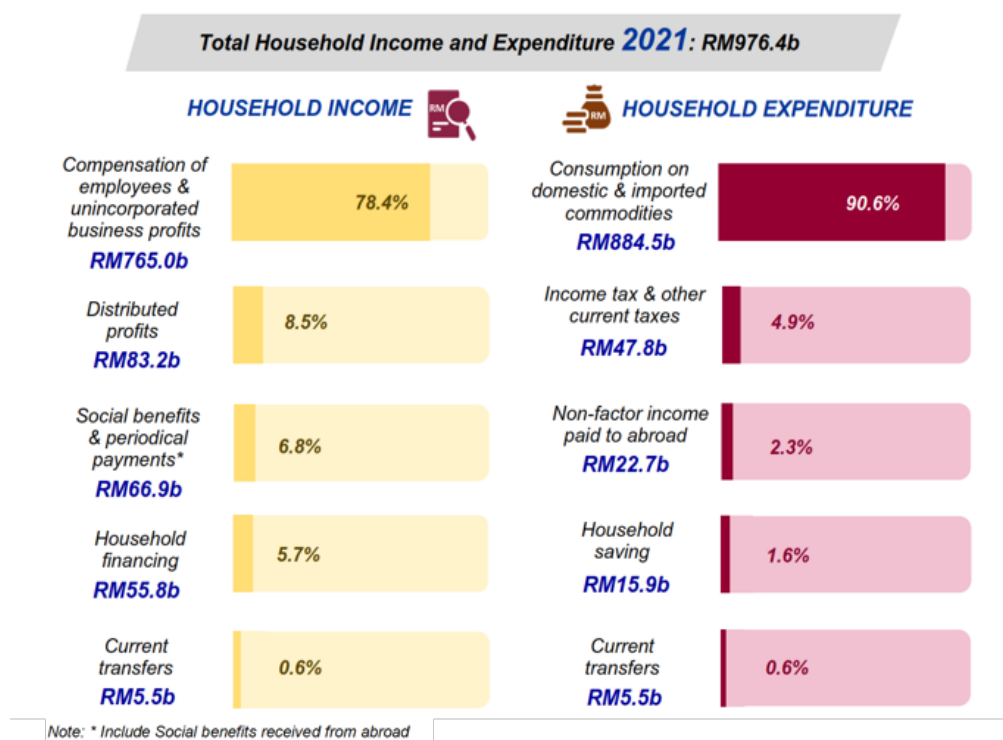
The Social Accounting Matrix (SAM) integrates economic and social statistics in Malaysia for the year 2021 in a comprehensive framework. SAM depicts the distribution of income and expenditure in a balanced structure across institutions, encompassing households, financial & non-financial corporations, government as well as the rest of the world.

HOUSEHOLD INCOME DISTRIBUTION WITH TOTAL HOUSEHOLD INCOME OF RM976.4 BILLION

The total household income in 2021 was RM976.4 billion with the main contributor was compensation of employees & unincorporated business profits, amounting to RM765.0 billion (78.4%), followed by distributed profits at RM83.2 billion (8.5%) and social benefits & periodical payments at RM66.9 billion (6.8%). Additionally, household financing recorded a total of RM55.8 billion (5.7%) while current transfers amounted to RM5.5 billion (0.6%).

THE LARGEST HOUSEHOLD EXPENDITURE IS ON THE CONSUMPTION OF DOMESTIC AND IMPORTED COMMODITIES

The consumption on domestic and imported commodities was the main component of household expenditure in 2021 totalling RM884.5 billion, which accounted for 90.6 per cent of the total household outlays. This was followed by payments for income taxes & other current taxes at RM47.8 billion (4.9%), non-factor income paid to abroad at RM22.7 billion (2.3%), household saving at RM15.9 billion (1.6%) and current transfers at RM5.5 billion (0.6%).



Contact person:

Baharudin Mohamad
Public Relation Officer
Strategic Communication and International Division
Department of Statistics Malaysia
Tel : +603-8090 4681
Fax : +603-8888 9248
Email : baharudin[at]dosm.gov.my

