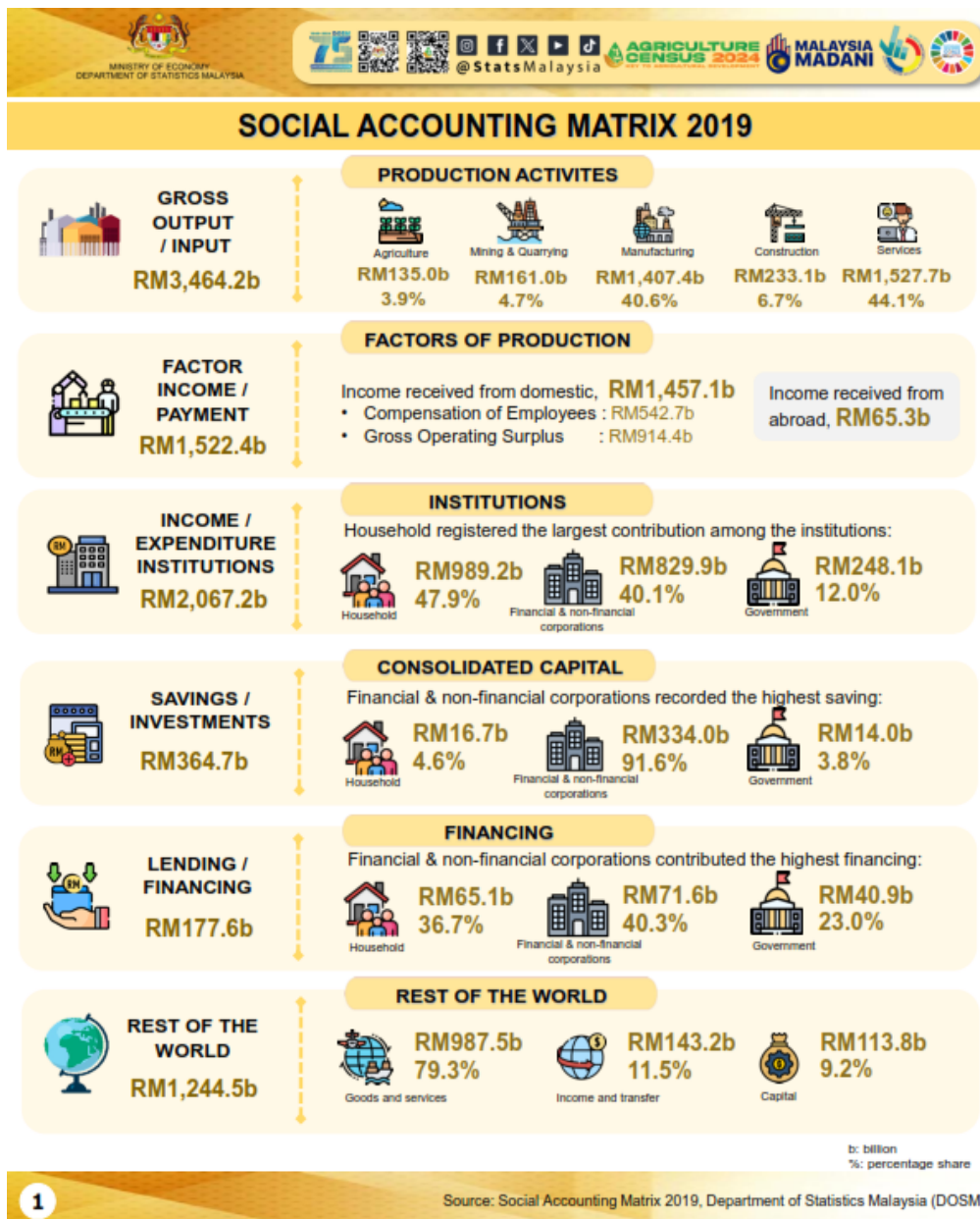




MINISTRY OF ECONOMY
DEPARTMENT OF STATISTICS MALAYSIA

SOCIAL ACCOUNTING MATRIX 2019



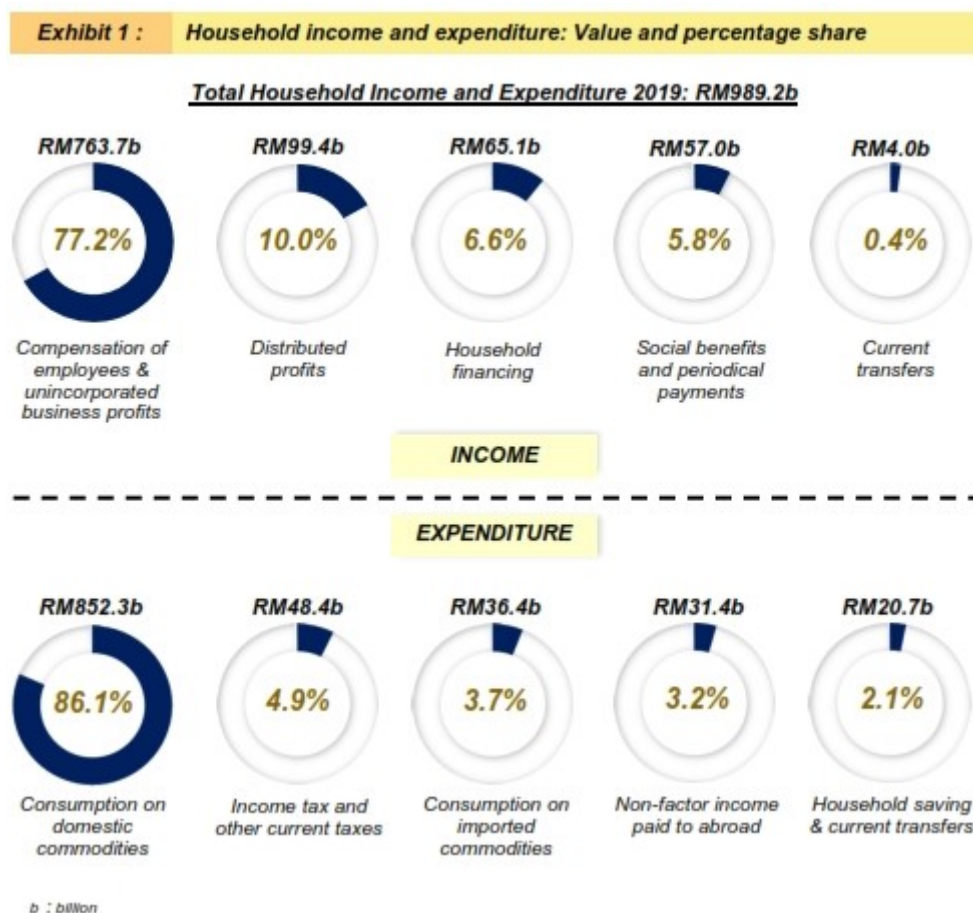
SOCIAL ACCOUNTING MATRIX 2019

Social Accounting Matrix (SAM) of Malaysia for the year 2019 integrates the economic and social statistics in a comprehensive framework. SAM describes the distribution of income and expenditure in a balanced structure within institutions, namely households, financial & non-financial corporations, government as well as rest of the world.

HOUSEHOLDS

The sources of household income incorporates compensation of employees & unincorporated business profits, distributed profits, household financing, social benefits & periodical payments, current transfers and social benefits received from abroad. The total household income recorded RM989.2 billion in 2019, with compensation of employees & unincorporated business profits as the main contributor with a value of RM763.7 billion (77.2%). Distributed profits, household financing, social benefits and periodical payments as well as current transfers contributed RM99.4 billion (10.0%), RM65.1 billion (6.6%) and RM57.0 billion (5.8%) respectively and RM4.0 billion (0.4%) as in Exhibit 1.

Meanwhile, the household expenditure was led by consumption on domestic with a value of RM852.3 billion (86.1%). The second contributor was income tax & other current taxes paid by household RM48.4 billion (4.9%), followed by consumption on imported commodities RM36.4 billion (3.7%), non-factor income paid to abroad RM31.4 billion (3.2%) as well as household saving and current transfers RM20.7 billion (2.1%).



Contact person:

Baharudin Mohamad
Public Relation Officer

Strategic Communication and International Division
Department of Statistics Malaysia
Tel : +603-8090 4681
Fax : +603-8888 9248
Email : baharudin[at]dosm.gov.my

Copyright ©2025 Department of Statistics Malaysia Official Portal. All Rights Reserved.