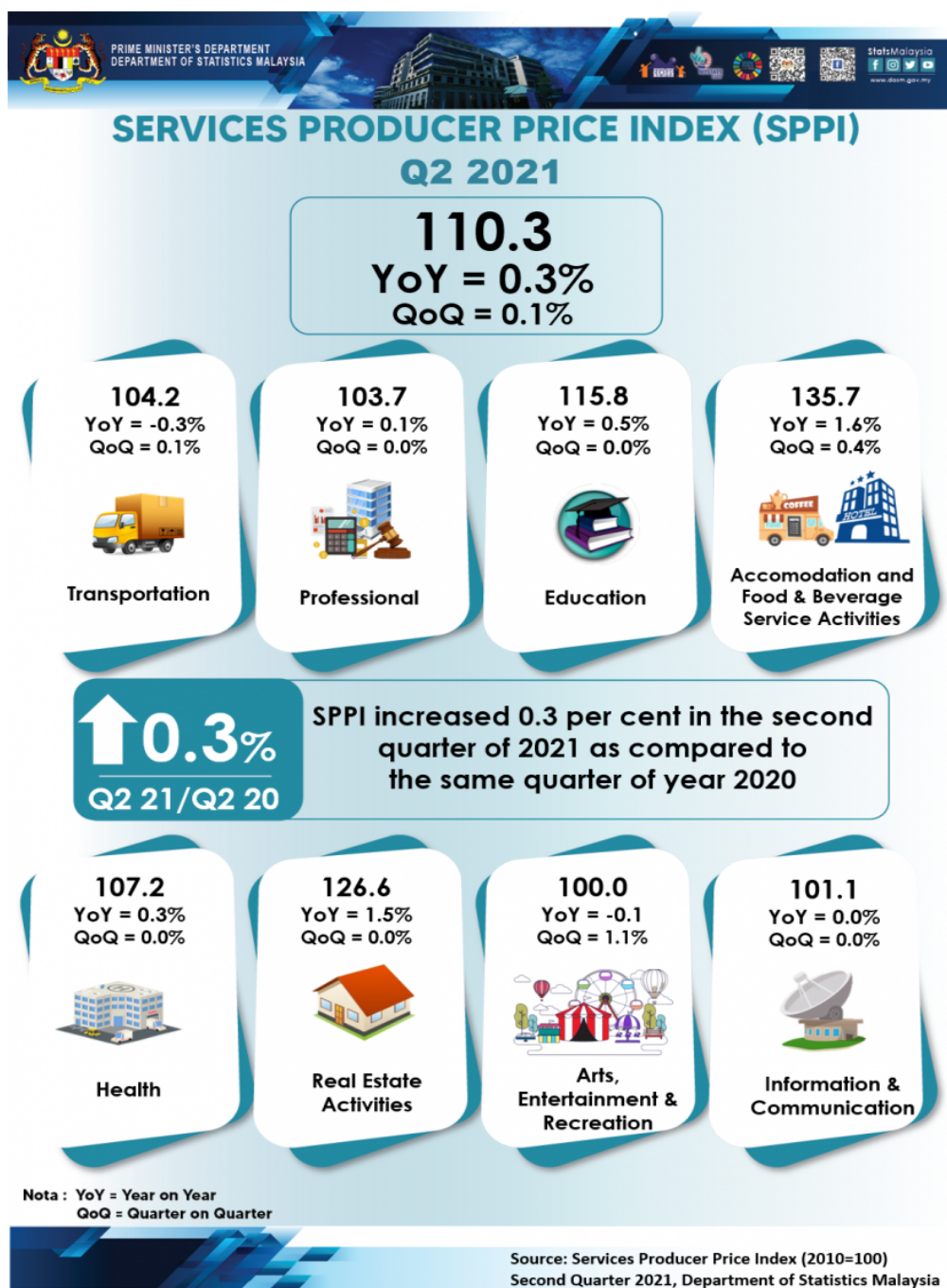




MINISTRY OF ECONOMY
DEPARTMENT OF STATISTICS MALAYSIA

SERVICES PRODUCER PRICE INDEX, SECOND QUARTER OF 2021



SERVICES PRODUCER PRICE INDEX (2010=100)

SECOND QUARTER 2021

The Services Producer Price Index (SPPI) for the second quarter of 2021 increased 0.3 per cent to 110.3 as compared to 110.0 in the same quarter of the preceding year. The main sub-sectors that showed an increase were Accommodation and Food & Beverage Service Activities (1.6%), Real Estate Activities (1.5%), Education (0.5%), Health (0.3%) and Professional (0.1%). However, the index for Transportation and Arts, Entertainment & Recreation decreased by 0.3 per cent and 0.1 per cent respectively. Index for Information & Communication remained unchanged.

On Quarterly basis, the index increased 0.1 per cent. This was driven by three sub-sectors namely Arts, Entertainment & Recreation (1.1%), Accommodation and Food & Beverage Service Activities (0.4%) and Transportation (0.1%). However, the following subsectors remained unchanged: Information & Communication, Real Estate Activities, Professional Education and Health.

Table 1: Services Producer Price Index (2010=100), Second Quarter 2021

Subsector	Index			Change %	
	Q2 2020	Q1 2021	Q2 2021	Q2 2021/ Q1 2021	Q2 2021/ Q2 2020
TOTAL	110.0	110.2	110.3	0.1	0.3
Transportation	104.5	104.1	104.2	0.1	-0.3
Accommodation and Food & Beverage Service Activities	133.6	135.2	135.7	0.4	1.6
Information & Communication	101.1	101.1	101.1	0.0	0.0
Real Estate Activities	124.7	126.6	126.6	0.0	1.5
Professional	103.6	103.7	103.7	0.0	0.1
Education	115.2	115.8	115.8	0.0	0.5
Health	106.9	107.2	107.2	0.0	0.3
Arts, Entertainment & Recreation	100.1	98.9	100.0	1.1	-0.1

TRANSPORTATION

The SPPI for the Transport sub-sector decreased 0.3 per cent in the second quarter of 2021 as compared to the same quarter of the previous year. This decrease was mainly contributed by Passenger Air Transport (3.1%) and Postal Activities (0.1%). Meanwhile, there was an increase in the following indices: Courier Activities (1.6%), Other Land Transport (1.2%), Sea & Coastal Water Transport (1.0%) and Freight Air Transport (0.2%).

As for the quarterly comparison, the index for the second quarter of 2021 increased 0.1 per cent over the previous quarter. The increase was driven by the index of Passenger Air Transport (0.5%) and Courier Activities (0.1%). However, no changes were recorded for Freight Air Transport, Postal Activities, Other Land Transport and Sea & Coastal Water Transport indices.

ACCOMMODATION AND FOOD & BEVERAGE SERVICE ACTIVITIES

Annual comparison for the second quarter of 2021 showed the SPPI for Accommodation and Food & Beverage Service Activities increased 1.6 per cent. This increase was driven by index of Restaurants & Mobile Food Service Activities (1.9%), Beverage Serving Activities (0.7%) and Short-term Accommodation Activities (0.4%). Meanwhile, Event Catering & Other Food Service Activities remained unchanged.

Quarter-on-quarter comparison also recorded an increase of 0.4 per cent. This increase was contributed by Restaurants & Mobile Food Service Activities (0.4%) and Beverage Serving Activities (0.1%). Nevertheless, Short-term Accommodation Activities and Event Catering & Other Food Service Activities did not record any changes.

INFORMATION & COMMUNICATION

Annual and quarterly comparisons for the second quarter of 2021 showed that there was no changes for Information & Communications sub-sector. However, the Wireless Telecommunication Activities index showed a decrease of 0.1 per cent.

REAL ESTATE ACTIVITIES

The SPPI for Real Estate Activities rose 1.5 per cent as compared to the previous year contributed by index of Real Estate Activities on a Fee or Contract Basis (1.5%). Quarter-on-quarter comparison, the SPPI for Real Estate Activities did not record any changes.

PROFESSIONAL

SPPI for Professional sub-sector recorded an increase of 0.1 per cent in the second quarter of 2021 as compared to the same quarter of the previous year. The increase was contributed by the index of Architectural & Engineering Activities and Related Technical Consultancy (0.1%). As for the quarterly comparison, index for Professional remained unchanged.

EDUCATION

The SPPI for Education sub-sector increased 0.5 per cent in the second quarter of 2021. All activities registered higher price. Index of Secondary Education recorded the highest increase with 1.6 per cent. Meanwhile, Pre-Primary & Primary Education, Other Education and Higher Education showed an increase of 1.5 per cent, 0.6 per cent and 0.2 per cent respectively. However, the index showed no changes in quarterly comparison.

HEALTH

The SPPI for Health sub-sector registered 0.3 per cent increase year-on-year. The increase was contributed by the index of Medical & Dental Practice Activities (0.5%) and Hospital Activities (0.2%). However, Other Human Health Activities decreased 0.7 per cent.

On a quarterly basis, the SPPI for Health sub-sector did not record any changes. However, index for Medical & Dental Practice Activities increased 0.1 per cent. Meanwhile, index for Other Human Health Activities declined 0.1 per cent.

ARTS, ENTERTAINMENT & RECREATION

In the second quarter of 2021, the SPPI for Arts, Entertainment & Recreation sub-sector declined 0.1 per cent for year-on-year. This was due to the index of Gambling & Betting Activities (0.1%). However, the index increased for Sports Activities (0.9%) and Other Amusement & Recreation Activities (0.5%). On a quarterly basis, the SPPI for Arts, Entertainment & Recreation sub-sector increased 1.1 per cent, driven by Gambling & Betting Activities (1.3%) and Other Amusement & Recreation Activities (0.5%).

The full publication of the Services Producer Price Index, Second Quarter 2021 can be downloaded through [eStatistik](#) portal.

Released by:

DATO' SRI DR. MOHD UZIR MAHIDIN
CHIEF STATISTICIAN MALAYSIA
DEPARTMENT OF STATISTICS, MALAYSIA

AUGUST 2021

Contact person:

Mohd Yusrizal Ab Razak
Public Relation Officer
Strategic Communication and International Division
Department of Statistics, Malaysia
Tel : +603-8885 7942
Fax : +603-8888 9248
E-mail : yusrizal.razak[at]dosm.gov.my

Contact person:

Baharudin Mohamad
Public Relation Officer
Strategic Communication and International Division
Department of Statistics Malaysia
Tel : +603-8090 4681
Fax : +603-8888 9248
Email : baharudin[at]dosm.gov.my

Copyright ©2025 Department of Statistics Malaysia Official Portal. All Rights Reserved.