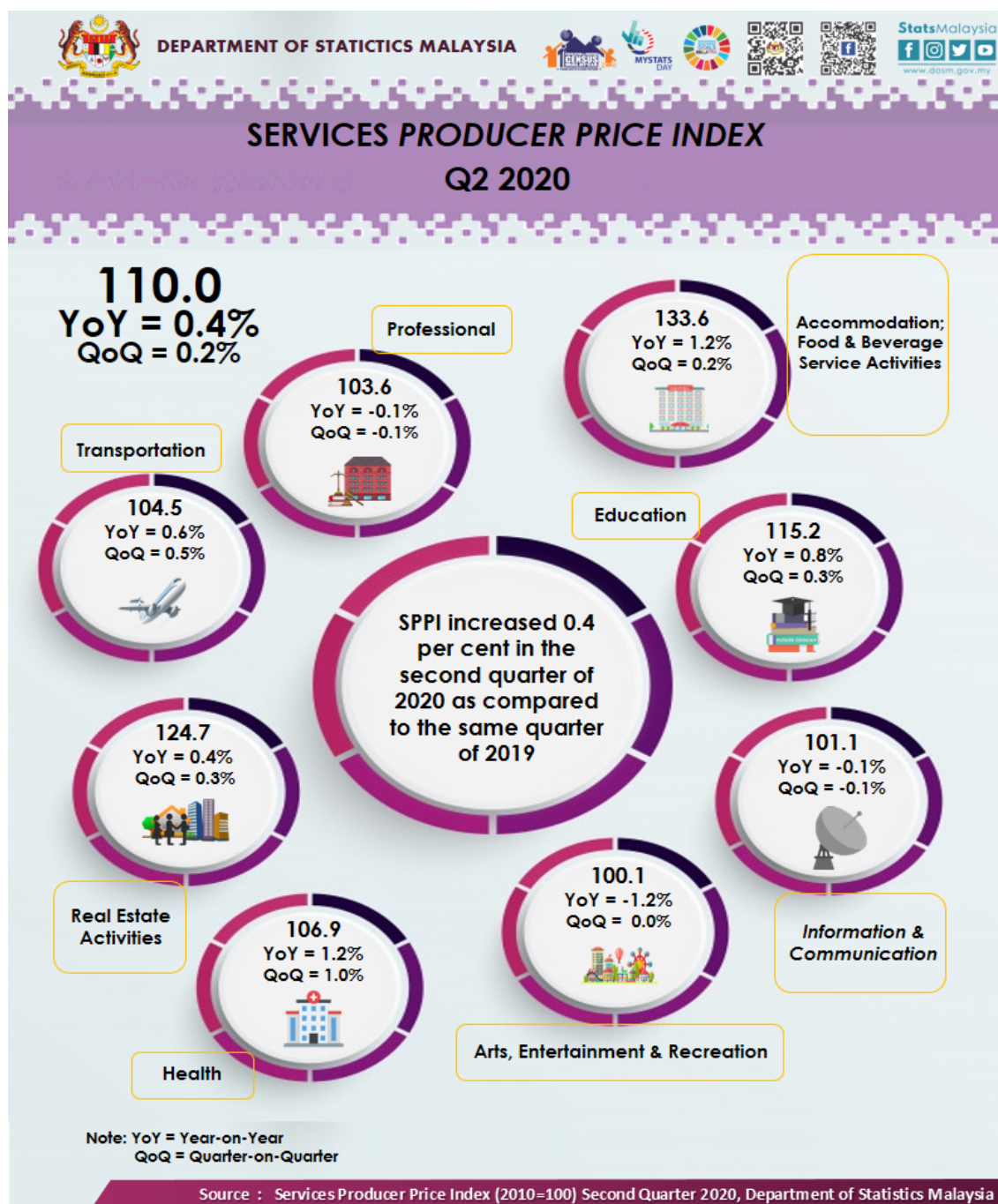




MINISTRY OF ECONOMY  
DEPARTMENT OF STATISTICS MALAYSIA

## SERVICES PRODUCER PRICE INDEX, SECOND QUARTER OF 2020



## SERVICES PRODUCER PRICE INDEX (2010=100)

### SECOND QUARTER 2020

The Services Producer Price Index (SPPI) for the second quarter of 2020 increased 0.4 per cent to 110.0 as compared to 109.6 in the same quarter of the preceding year. The main sub-sectors that contributed to the increase were Accommodation; Food & Beverage Service Activities (1.2%), Health (1.2%), Education (0.8%), Transportation (0.6%) and Real Estate Activities (0.4%). Meanwhile, the index decreased for Arts, Entertainment & Recreation (1.2%), Professional (0.1%) and Information & Communication (0.1%).

For quarterly comparisons, the index for the second quarter 2020 increased 0.2 per cent. The increase was contributed by sub-sectors Health (1.0%), Transportation (0.5%), Education (0.3%), Real Estate Activities (0.3%) and Accommodation; Food & Beverage Service Activities (0.2%). Meanwhile, the index decreased for Information & Communication (0.1%), Professional (0.1%) and Arts, Entertainment & Recreation indices remained unchanged.

**Table 1: Services Producer Price Index (2010=100), Second Quarter 2020**

Subsektor	Index			Changes %	
	Q2 2019	Q1 2020	Q2 2020	Q2 2020/ Q1 2020	Q2 2020/ Q2 2020
<b>TOTAL</b>	<b>109.6</b>	<b>109.8</b>	<b>110.0</b>	<b>0.2</b>	<b>0.4</b>
<b>Transportation</b>	<b>103.9</b>	<b>104.0</b>	<b>104.5</b>	<b>0.5</b>	<b>0.6</b>
<b>Accommodation; Food &amp; Beverage Service Activities</b>	<b>132.0</b>	<b>133.3</b>	<b>133.6</b>	<b>0.2</b>	<b>1.2</b>
<b>Information &amp; Communication</b>	<b>101.2</b>	<b>101.2</b>	<b>101.1</b>	<b>-0.1</b>	<b>-0.1</b>
<b>Real Estate Activities</b>	<b>124.2</b>	<b>124.3</b>	<b>124.7</b>	<b>0.3</b>	<b>0.4</b>
<b>Professional</b>	<b>103.7</b>	<b>103.7</b>	<b>103.6</b>	<b>-0.1</b>	<b>-0.1</b>
<b>Education</b>	<b>114.3</b>	<b>114.9</b>	<b>115.2</b>	<b>0.3</b>	<b>0.8</b>
<b>Health</b>	<b>105.6</b>	<b>105.8</b>	<b>106.9</b>	<b>1.0</b>	<b>1.2</b>
<b>Arts, Entertainment &amp; Recreation</b>	<b>101.3</b>	<b>100.1</b>	<b>100.1</b>	<b>0.0</b>	<b>-1.2</b>

### TRANSPORTATION

The SPPI of the Transport sub-sector increased by 0.6 per cent in the second quarter of 2020 as compared to the same quarter of the previous year. This increase was contributed by Postal Activities (11.5%), Air Freight Transport (3.4%), Courier Activities (1.9%) and Sea & Coastal Water Transport (0.6%). Meanwhile, the index of Other Land Transport remained unchanged.

For the quarterly comparison, the index for the second quarter of 2020 increased by 0.5 per cent over the previous quarter. It was driven by the Freight Air Transport (3.4%), Postal Activities (3.1%), Courier Activities (1.4%), and Passenger Air Transport (1.0%). No changes were recorded for Sea & Coastal Water Transport and Other Land Transport indices.

### ACCOMMODATION; FOOD & BEVERAGE SERVICE ACTIVITIES

In the second quarter of 2020, the SPPI for Accommodation; Food & Beverage Service Activities increased 1.2 per cent as compared to the same quarter of 2019. The increase was driven by Restaurants & Mobile Food Service Activities (1.5%), Beverage Serving Activities (1.2%) and Event Catering & Other Food Service Activities (0.3%) indices. Meanwhile the index of Short-term Accommodation Activities decreased 0.4 per cent.

Quarter-on-quarter comparisons showed an increase of 0.2 per cent. This increase was contributed by Restaurants & Mobile Food Service Activities (0.3%), Beverage Serving Activities (0.1%) and Event Catering & Other Food Service Activities (0.1%) indices. However, the index for Short-term Accommodation Activities decreased 0.2 per cent.

## **INFORMATION & COMMUNICATION**

The SPPI for Information & Communication sub-sector decreased 0.1 per cent in the second quarter of 2020 compared to the same period last year. The decline was due to a 0.1 decrease in the Wireless Telecommunication Activities indices. However, the Computer Programming, Consultancy & Related Activities index showed an increase of (0.2%).

Quarter-on-quarter comparison showed the index declined 0.1 per cent for Wired Telecommunication Activities and Wireless Telecommunication Activities. Meanwhile, Computer Programming, Consultancy & Related Activities index increased 0.1 per cent.

## **REAL ESTATE ACTIVITIES**

Annual comparison for the second quarter of 2020 showed the SPPI for Real Estate Activities sub-sector increased 0.4 per cent. The increase was contributed by the index of Real Estate Activities on a Fee or Contract Basis 0.4 per cent. Quarter-to-quarter comparison, the SPPI for this sub-sector increased 0.3 per cent supported by Real Estate Activities on a Fee or Contract Basis (0.3%).

## **PROFESSIONAL**

The SPPI of the Professional sub-sector registered a 0.1 per cent decrease on a year-on-year basis driven by Legal Activities index (0.1%). However, the Architectural & Engineering Activities; Related Technical Consultancy and Accounting, Bookkeeping & Auditing Activities; Tax Consultancy index remained the same. On a quarterly basis, the SPPI for Professional sub-sector also declined 0.1 per cent. This is due to the decline in the Architectural & Engineering Activities; Related Technical Consultancy (0.1%). No changes were recorded for Accounting, Bookkeeping & Auditing Activities; Tax Consultancy and Legal Activities indices.

## **EDUCATION**

The SPPI for Education sub-sector increased 0.8 per cent in the second quarter of 2020 as compared to the same quarter of 2019. The increase was contributed by Secondary Education (4.7%), Higher Education (0.4%) and Pre-Primary & Primary Education (0.2%) indices. The Other Education indices did not record any changes.

As compared to the previous quarter, SPPI for Education sub-sector increased 0.3 per cent, driven by Higher Education (0.4%). Meanwhile, Secondary Education, Pre-Primary & Primary Education and Other Education indices remained unchanged.

## HEALTH

In the second quarter of 2020, the SPPI for Health sub-sector increased 1.2 per cent year-on-year. The increase was contributed by the index of Hospital Activities (1.6%), Medical & Dental Practice Activities (0.9%) and Other Human Health Activities (0.5%).

Quarter-on-quarter comparison, the SPPI for this sub-sector recorded an increase of 1.0 per cent. It was contributed by Hospital Activities (1.3%), Medical & Dental Practice Activities (0.8%) and Other Human Health Activities (0.3%).

## ARTS, ENTERTAINMENT & RECREATION

The SPPI for Arts, Entertainment & Recreation sub-sector declined of 1.2 per cent year-on-year. The decrease was driven by the index of Gambling & Betting Activities (1.5%). However, the index increased for Sports Activities (0.1%) and Other Amusement & Recreation Activities was unchanged.

On a quarterly basis, the SPPI for Arts, Entertainment & Recreation sub-sector remained unchanged. Nevertheless, there was an increase by Sports Activities (0.2%) meanwhile Gambling & Betting Activities and Other Amusement & Recreation Activities remained unchanged.

### Released by:

**DATO' SRI DR. MOHD UZIR MAHIDIN**  
**CHIEF STATISTICIAN MALAYSIA**  
**DEPARTMENT OF STATISTICS, MALAYSIA**

 [DrUzir\\_Mahidin](#)  [Dr\\_Uzir](#)  [Dr\\_Uzir](#)

**#myHariBulan# #myBulan# #myTahun#**

### Contact person:

Mohd Yusrizal Ab Razak  
Public Relation Officer  
Strategic Communication and International Division  
Department of Statistics, Malaysia  
**Tel** : +603-8885 7942  
**Fax** : +603-8888 9248  
**E-mail** : yusrizal.razak@dosm.gov.my

### Contact person:

Baharudin Mohamad  
Public Relation Officer  
Strategic Communication and International Division  
Department of Statistics Malaysia  
**Tel** : +603-8090 4681  
**Fax** : +603-8888 9248  
**Email** : baharudin[at]dosm.gov.my

**Copyright ©2026 Department of Statistics Malaysia Official Portal. All Rights Reserved.**