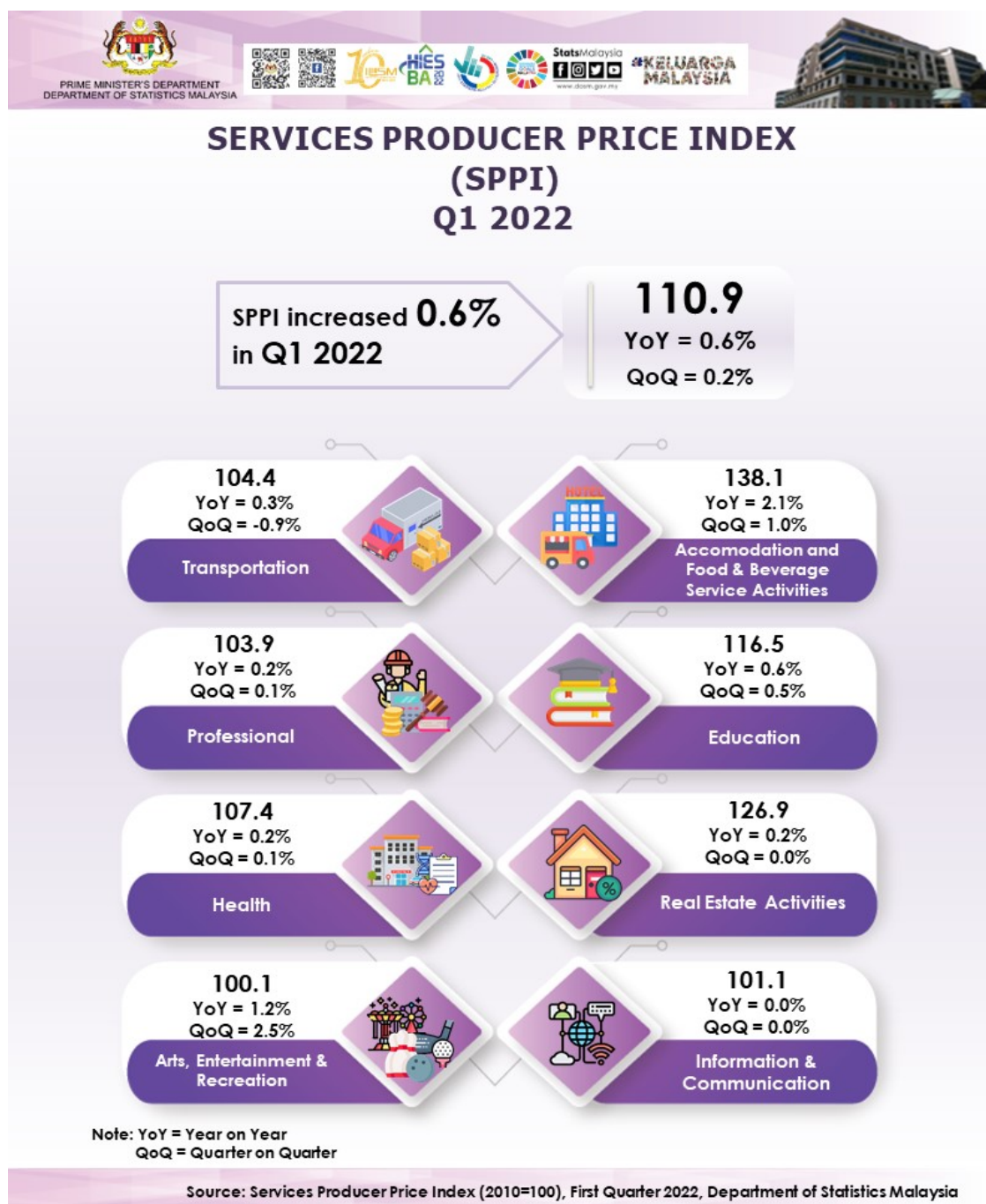




MINISTRY OF ECONOMY  
DEPARTMENT OF STATISTICS MALAYSIA

## SERVICES PRODUCER PRICE INDEX, FIRST QUARTER OF 2022



**SERVICES PRODUCER PRICE INDEX (2010=100)**  
**FIRST QUARTER 2022**

The Services Producer Price Index (SPPI) for the first quarter of 2022 increased 0.6 per cent to 110.9 as compared to 110.2 in the same quarter of the preceding year. The increase in the index was mainly driven by Accommodation and Food & Beverage Service Activities (2.1%), Arts, Entertainment & Recreation (1.2%), Education (0.6%) and Transportation (0.3%), while Real Estate Activities, Professional and Health increased 0.2 per cent respectively. However, the index for Information & Communication remained unchanged.

For quarter-on-quarter comparison, the SPPI rose by 0.2 per cent. This increase was contributed by the Arts, Entertainment & Recreation (2.5%), Accommodation and Food & Beverage Service Activities (1.0%) and Education (0.5%), while the indices of Professional and Health subsectors, registered a marginal increase of 0.1 per cent. However, the index for Transportation recorded a decline of 0.9 per cent. The index for Information & Communication and Real Estate Activities subsectors remained unchanged.

Table 1: Services Producer Price Index (2010=100), First Quarter 2022

Subsector	Index			Percentage Change (%)	
	Q1 2021	Q4 2021	Q1 2022	Q1 2022/ Q4 2021	Q1 2022/ Q1 2021
<b>TOTAL</b>	<b>110.2</b>	<b>110.7</b>	<b>110.9</b>	<b>0.2</b>	<b>0.6</b>
<b>Transportation</b>	104.1	105.3	104.4	-0.9	0.3
<b>Accommodation and Food &amp; Beverage Service Activities</b>	135.2	136.8	138.1	1.0	2.1
<b>Information &amp; Communication</b>	101.1	101.1	101.1	0.0	0.0
<b>Real Estate Activities</b>	126.6	126.9	126.9	0.0	0.2
<b>Professional</b>	103.7	103.8	103.9	0.1	0.2
<b>Education</b>	115.8	115.9	116.5	0.5	0.6
<b>Health</b>	107.2	107.3	107.4	0.1	0.2
<b>Arts, Entertainment &amp; Recreation</b>	98.9	97.7	100.1	2.5	1.2

## TRANSPORTATION

The Transportation subsector increased by 0.3 per cent in the first quarter of 2022 as compared to the same quarter of the previous year. The increase was mainly driven by the index of Postal Activities (3.0%), while Other Land Transport and Sea & Coastal Water Transport indices, increased 0.4 per cent respectively and Courier Activities (0.3%). However, the index of Passenger Air Transport showed a decrease of 0.1 per cent. The index of Freight Air Transport remained unchanged.

On a quarterly basis, the Transportation subsector decreased by 0.9 per cent in the first quarter of 2022. The decrease was driven by the index of Passenger Air Transport (-4.5%). However, there were an increase in the indices of Postal Activities (3.0%), Sea & Coastal Water Transport (0.3%), Other Land Transport (0.2%) and Courier Activities (0.1%). The index of Freight Air Transport remained unchanged.

## ACCOMMODATION AND FOOD & BEVERAGE SERVICE ACTIVITIES

On a yearly basis, the index of Accommodation and Food & Beverage Service Activities increased by 2.1 per cent. The increase was mainly contributed by the index of Restaurants & Mobile Food Service Activities (2.6%) and Beverage Serving Activities (1.5%), while Short-term Accommodation Activities and Event Catering & Other Food Service Activities increased 0.1 per cent respectively.

Simultaneously, quarterly index for this subsector also recorded an increase of 1.0 per cent. This increase was attributed by Restaurants & Mobile Food Service Activities (1.1%), Beverage Serving Activities (0.9%) and Event Catering & Other Food Service Activities (0.1%). Meanwhile, the index of Short-term

Accommodation Activities remained unchanged.

## **INFORMATION & COMMUNICATION**

Annual and quarterly comparisons index for the first quarter of 2022 remained unchanged for Information & Communications subsector. However, the Computer Programming, Consultancy & Related Activities index moved up by 0.2 per cent annually and 0.1 per cent on quarterly basis.

## **REAL ESTATE ACTIVITIES**

The Real Estate Activities subsector rose 0.2 per cent as compared to the previous year contributed by Real Estate Activities on a Fee or Contract Basis (0.2%). For quarter-on-quarter comparison remain unchanged.

## **PROFESSIONAL**

The SPPI for Professional subsector increased by 0.2 per cent in the first quarter of 2022. The increase was driven by the index of Legal & Accounting Activities (0.2%) and Architectural & Engineering Activities; Technical Testing & Analysis (0.1%).

On a quarterly basis, Professional subsector increased by 0.1 per cent driven by the indices of Legal & Accounting Activities and Architectural & Engineering Activities; Technical Testing and Analysis with each registered 0.1 per cent respectively.

## **EDUCATION**

The Education subsector increased by 0.6 per cent in the first quarter of 2022. The index of Pre-Primary & Primary Education recorded the highest increase of 1.5 per cent. Meanwhile, Secondary Education, Other Education and Higher Education indices increased 1.0 per cent, 0.5 per cent and 0.4 per cent respectively.

In addition, the index also increased 0.5 per cent on a quarterly comparison. This increase was contributed by Pre-Primary & Primary Education (1.5%), Secondary Education (0.7%), Other Education (0.5%) and Higher Education (0.3%).

## **HEALTH**

The SPPI for Health subsector registered 0.2 per cent increase as compared to the first quarter 2021. The increase was contributed by the index of Medical & Dental Practice Activities (0.4%) and Hospital Activities (0.2%). However, Other Human Health Activities index decreased by 0.1 per cent.

On a quarterly basis, Health subsector also increased by 0.1 per cent. This was driven by Medical & Dental Practice Activities, Hospital Activities and Other Human Health Activities indices, each recorded an increase by 0.1 per cent respectively.

## **ARTS, ENTERTAINMENT & RECREATION**

In the first quarter of 2022, the SPPI for Arts, Entertainment & Recreation subsector showed an increase of 1.2 per cent as against first quarter 2021. This increase was driven by the index of Other Amusement & Recreation Activities (1.5%), Gambling & Betting Activities (1.2%) and Sports Activities (0.3%).

On a quarterly basis, the SPPI for Arts, Entertainment & Recreation subsector increased by 2.5 per cent, driven by the Gambling & Betting Activities (2.9%), Other Amusement & Recreation Activities (0.5%) and Sports Activities (0.1%).

The full publication of the Services Producer Price Index, First Quarter 2022 can be downloaded through [eStatistik](#) portal.

**Released by:**

**DEPARTMENT OF STATISTICS, MALAYSIA**

**09 May 2022**

**Contact person:**

Mohd Yusrizal Ab Razak  
Public Relation Officer  
Strategic Communication and International Division  
Department of Statistics, Malaysia

**Tel :** +603-8885 7942

**Fax :** +603-8888 9248

**E-mail :** yusrizal.razak[at]dosm.gov.my

**Contact person:**

Baharudin Mohamad  
Public Relation Officer  
Strategic Communication and International Division  
Department of Statistics Malaysia

**Tel :** +603-8090 4681

**Fax :** +603-8888 9248

**Email :** baharudin[at]dosm.gov.my

**Copyright ©2025 Department of Statistics Malaysia Official Portal. All Rights Reserved.**