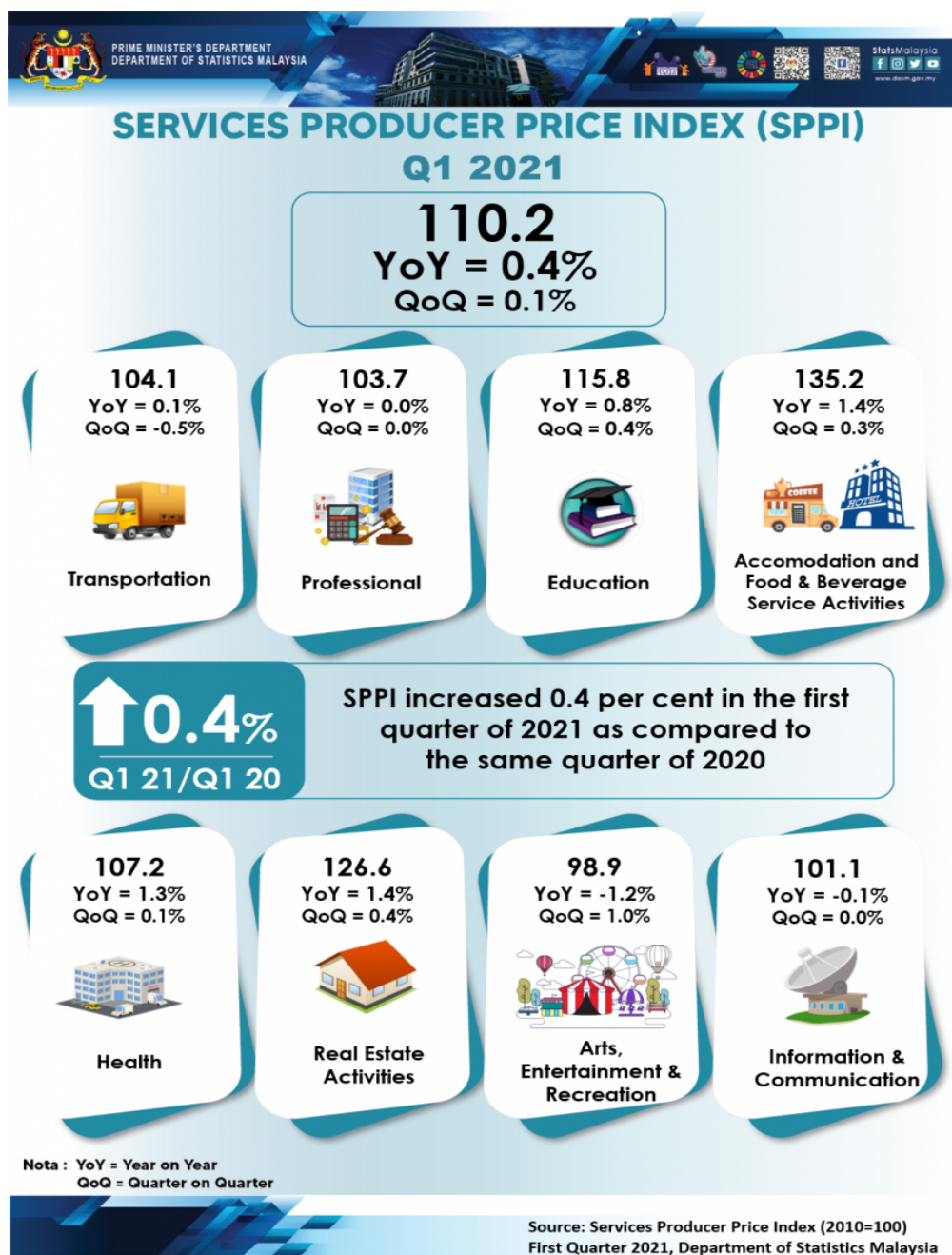




MINISTRY OF ECONOMY
DEPARTMENT OF STATISTICS MALAYSIA

SERVICES PRODUCER PRICE INDEX, FIRST QUARTER OF 2021



SERVICES PRODUCER PRICE INDEX (2010=100)

FIRST QUARTER 2021

The Services Producer Price Index (SPPI) for the first quarter of 2021 increased 0.4 per cent to 110.2 as compared to 109.8 in the same quarter of the preceding year. The main sub-sectors that showed an increase were Accommodation and Food & Beverage Service Activities (1.4%), Real Estate Activities (1.4%), Health (1.3%), Education (0.8%) and Transportation (0.1%). However, the index for Arts, Entertainment & Recreation and Information & Communication decreased by 1.2 per cent and 0.1 per cent respectively. Index for Professional remained unchanged.

On the Quarterly basis, the index increased 0.1 per cent. This was driven by the following sub-sectors: Arts, Entertainment & Recreation (1.0%), Education (0.4%), Real Estate Activities (0.4%), Accommodation and Food & Beverage Service Activities (0.3%) and Health (0.1%). The index for Transportation decreased 0.5 per cent while the Professional and Information & Communication indices remained unchanged.

Table 1: Services Producer Price Index (2010=100), First Quarter 2021

Subsector	Index			Change %	
	Q1 2020	Q4 2020	Q1 2021	Q1 2021/ Q4 2020	Q1 2021/ Q1 2020
TOTAL	109.8	110.1	110.2	0.1	0.4
Transportation	104.0	104.6	104.1	-0.5	0.1
Accommodation and Food & Beverage Service Activities	133.3	134.8	135.2	0.3	1.4
Information & Communication	101.2	101.1	101.1	0.0	-0.1
Real Estate Activities	124.8	126.1	126.6	0.4	1.4
Professional	103.7	103.7	103.7	0.0	0.0
Education	114.9	115.3	115.8	0.4	0.8
Health	105.8	107.1	107.2	0.1	1.3
Arts, Entertainment & Recreation	100.1	97.9	98.9	1.0	-1.2

TRANSPORTATION

The SPPI for the Transport sub-sector increased 0.1 per cent in the first quarter of 2021 as compared to the same quarter of the previous year. This increase was contributed by Freight Air Transport (3.6%), Postal Activities (3.1%), Courier Activities (3.0%), Other Land Transport (1.2%) and Sea & Coastal Water Transport (1.0%). Meanwhile, the index of Passenger Air Transport decreased 2.6 per cent.

As for the quarterly comparison, the index declined 0.5 per cent over the previous quarter. This was due to by the index of Passenger Air Transport (3.7%). However, the Other Land Transport and Sea & Coastal Water Transport increased by 1.0 per cent and Courier Activities (0.3%). Meanwhile, no changes was recorded for indices of Postal Activities and Passenger Air Transport.

ACCOMMODATION AND FOOD & BEVERAGE SERVICE ACTIVITIES

Annual comparison for the first quarter of 2021 showed the SPPI for Accommodation and Food & Beverage Service Activities increased 1.4 per cent. All activities registered higher price. Index of Restaurants & Mobile Food Service Activities recorded the highest increase with 1.8 per cent. Meanwhile, Beverage Serving Activities, Short-term Accommodation Activities and Event Catering & Other Food Service Activities recorded an increase of 0.7 per cent, 0.2 per cent and 0.1 per cent respectively.

Quarter-on-quarter comparison also recorded an increase of 0.3 per cent. This increase was contributed by Short-term Accommodation Activities (0.4%), Restaurants & Mobile Food Service Activities (0.3%) and Beverage Serving Activities (0.1%) and Event Catering & Other Food Service Activities (0.1%).

INFORMATION & COMMUNICATION

The SPPI for Information & Communication sub-sector registered a decrease of 0.1 per cent in the first quarter of 2021 as compared to the same period last year. This was due to the decline in the Wireless Telecommunication Activities (0.1%). However, the Computer Programming, Consultancy & Related Activities index showed an increase of 0.1 per cent. Quarter-on-quarter comparisons, the index remained unchanged.

PROFESSIONAL AND REAL ESTATE ACTIVITIES

Annual and quarterly comparison for the first quarter of 2021 showed that there was no changes for Professional sub-sector. The SPPI for Real Estate Activities rose 1.4 per cent as compared to the previous year contributed by index of Real Estate Activities on a Fee or Contract Basis (1.4%). Quarter-on-quarter comparison, the SPPI for Real Estate Activities increased 0.4 per cent supported by Real Estate Activities on a Fee or Contract Basis (0.4%).

EDUCATION

The SPPI for Education sub-sector increased 0.8 per cent in the first quarter of 2021 higher than 0.6 per cent recorded in same quarter of 2020. The index of Secondary Education recorded the highest increase with 1.6 per cent. Furthermore, Pre-Primary & Primary Education, Other Education and Higher Education showed an increase 1.5 per cent, 0.6 per cent and 0.5 per cent respectively.

As compared to the previous quarter, SPPI for Education sub-sector recorded a positive change of 0.4 per cent in the first quarter 2021. This was driven by Pre-Primary & Primary Education (1.5%), Other Education (0.6%), Secondary Education (0.5%) and Higher Education (0.2%).

HEALTH

The SPPI for Health sub-sector registered 1.3 per cent increase year-on-year. The increase was contributed by the index of Hospital Activities (1.5%) and Medical & Dental Practice Activities (1.2%). However, Other Human Health Activities decreased 0.3 per cent.

On a quarterly basis, the SPPI for Health sub-sector increased 0.1 per cent contributed by index Hospital Activities (0.2%), Other Human Health Activities and Medical & Dental Practice Activities recorded 0.1 per cent respectively.

ARTS, ENTERTAINMENT & RECREATION

In the first quarter of 2021, the SPPI for Arts, Entertainment & Recreation sub-sector declined 1.2 per cent for year-on-year. This was due to the index of Gambling & Betting Activities (1.5%) and Other Amusement & Recreation Activities (0.2%). However, the index for Sports Activities increased 1.1 per cent. On a quarterly basis, the SPPI for Arts, Entertainment & Recreation sub-sector increased 1.0 per cent, driven by Gambling & Betting Activities (1.2%), Sports Activities (0.8%) and Other Amusement & Recreation Activities (0.3%).

The full publication of the Services Producer Price Index, First Quarter 2021 can be downloaded through [eStatistik](#) portal.

Released by:

DATO' SRI DR. MOHD UZIR MAHIDIN
CHIEF STATISTICIAN MALAYSIA
DEPARTMENT OF STATISTICS, MALAYSIA

 [DrUzir_Mahidin](#)   [Dr_Uzir](#)

06 MAY 2021

Contact person:

Mohd Yusrizal Ab Razak
Public Relation Officer
Strategic Communication and International Division
Department of Statistics, Malaysia

Tel : +603-8885 7942

Fax : +603-8888 9248

E-mail : yusrizal.razak[at]dosm.gov.my

Contact person:

Baharudin Mohamad
Public Relation Officer
Strategic Communication and International Division
Department of Statistics Malaysia

Tel : +603-8090 4681

Fax : +603-8888 9248

Email : baharudin[at]dosm.gov.my

Copyright ©2026 Department of Statistics Malaysia Official Portal. All Rights Reserved.