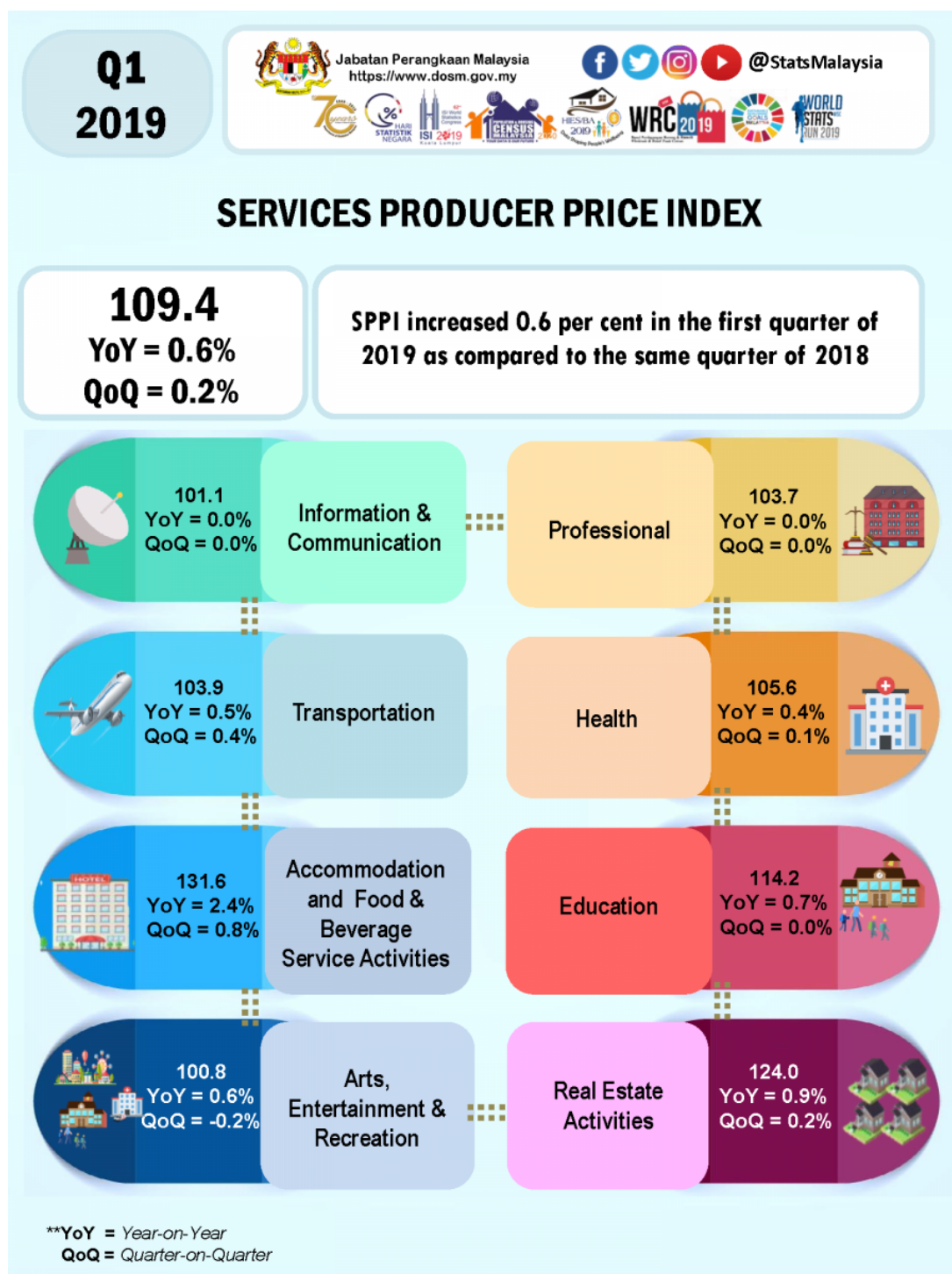




MINISTRY OF ECONOMY
DEPARTMENT OF STATISTICS MALAYSIA

SERVICES PRODUCER PRICE INDEX FIRST QUARTER OF 2019



SERVICES PRODUCER PRICE INDEX (2010=100)

FIRST QUARTER 2019

The Services Producer Price Index (SPPI) for the first quarter of 2019 increased 0.6 per cent as compared to the same period of the preceding year. The main sub-sectors that contributed to the increases were Accommodation and Food & Beverage Service Activities (+2.4%), Real Estate Activities (+0.9%), Education (+0.7%), Arts, Entertainment and Recreation (+0.6%), Transportation (+0.5%) and Health (+0.4%). Meanwhile, Professional and Information & Communication sub-sectors remain unchanged.

On the quarterly basis, the index for this quarter recorded an increase of 0.2 per cent. The increase was attributed by Accommodation and Food & Beverage Service Activities (+0.8%), followed by Transportation (+0.4%), Real Estate Activities (+0.2%) and Health (+0.1%). Meanwhile, Arts, Entertainment and Recreation decreased 0.2 per cent, while Education, Professional and Information & Communication sub-sectors remain unchanged.

TRANSPORTATION

The SPPI for Transportation increased 0.5 per cent for the first quarter of 2019 as compared to the same period of the previous year. The index of Postal Activities recorded the highest increase by 1.4 per cent, followed by Passenger Air Transport (+1.1%), Sea & Coastal Water Transport (+0.3%), Courier Activities and Other Land Transport (+0.2%). Meanwhile, Freight Air Transport's index remain unchanged.

On the Quarterly basis, the index increased by 0.4 percent as compared to the previous quarter. The index for Passenger Air Transport and Sea & Coastal Water Transport increased 0.8 per cent and 0.7 per cent respectively. The index also recorded increases for Postal Activities (+0.4%), Courier Activities (+0.2%) and Other Land Transport (0.1%). Meanwhile, the index for Freight Air Transport remained as previous quarter.

ACCOMMODATION & FOOD AND BEVERAGE SERVICE ACTIVITIES

In the first quarter of 2019, the SPPI for Accommodation and Food & Beverage Service Activities increased 2.4 per cent year-on-year comparison. This was mainly contributed by the Restaurants and Mobile Food Service Activities (+3.0%), Beverage Serving Activities (+1.2%), Short-term Accommodation Activities (+0.4%) and Event Catering & Other Food Service Activities (+0.2%).

Quarter-on-quarter comparison shows the index increased 1.0 per cent which was supported by the index of Restaurants and Mobile Food Service Activities (+1.0%), Beverage Serving Activities (+0.4%), Short-term Accommodation Activities and Event Catering & Other Food Service Activities (+0.1%).

INFORMATION AND COMMUNICATION

Annual and quarterly comparison for the first quarter of 2019 showed the SPPI for Information and Communication remain unchanged. However, index for Computer Programming, Consultancy & Related Activities increased 0.1 per cent.

REAL ESTATE ACTIVITIES

The SPPI for Real Estate Activities grew 0.9 per cent for the first quarter of 2019 as compared to the same period of the previous year. On quarterly basis, this sub-sector recorded the increases of 0.2 per cent.

PROFESSIONAL

No changes were registered for SPPI Professional in the first quarter of 2019 as compared to the previous year. However, Accounting, Bookkeeping & Auditing Activities; Tax Consultancy and Architectural & Engineering Activities & Related Technical Consultancy increased 0.1 per cent.

Quarter-on-quarter, SPPI Professional also remain unchanged. Accounting, Bookkeeping & Auditing Activities; Tax Consultancy increased 0.1 per cent, while Architectural & Engineering Activities & Related Technical Consultancy remained the same.

EDUCATION

The SPPI for Education increased 0.7 per cent in the first quarter of 2019 as compared to the same period of 2018. The increase was contributed by the index of Pre-Primary and Primary Education (+2.0%), Secondary Education (+1.2%), Other Education (+1.0%), and Higher Education (+0.4%).

No changes is recorded for the first quarter of 2019 as compared to the previous quarter. However, there were increases in the index of Pre-Primary and Primary Education (+2.1%), Secondary Education (+1.2%) and Other Education (+1.0%). Meanwhile, the index for Higher Education decreased 0.7 per cent.

HEALTH

The SPPI for Health recorded an increase of 0.4 per cent for year-on-year comparison. The increase was contributed by Medical and Dental Practice Activities (+0.5%), Hospital Activities (+0.2%) and Other Human Health Activities (+0.1%).

As for quarterly comparisons, the SPPI for Health increased 0.1 per cent. Medical and Dental Practice Activities increased 0.1 per cent while Hospital Activities and Other Human Health Activities remain unchanged.

ARTS, ENTERTAINMENT AND RECREATION

The SPPI for Arts, Entertainment, and Recreation increased 0.6 per cent in the first quarter of 2019 as compared to the same period last year. The increase was due to Gambling and Betting Activities (+0.6%) and Other Amusement & Recreation Activities (+0.3%). However, the index of Sports Activities decreased 0.1 per cent.

On a quarterly basis, the SPPI for Arts, Entertainment and Recreation declined 0.2 per cent which was contributed by Gambling and Betting Activities (-0.4%) and Sports Activities (-0.1%). However, Other Amusement & Recreation Activities increased 0.1 per cent.

Released By:

DATO' SRI DR. MOHD UZIR MAHIDIN
CHIEF STATISTICIAN MALAYSIA
DEPARTMENT OF STATISTICS, MALAYSIA

 [DrUzir_Mahidin](#)   [Dr_Uzir](#)

#myHariBulan# #myBulan# #myTahun#

Contact person:

Public Relation Officer
Strategic Communication and International Division
Department of Statistics, Malaysia

Tel : +603-8885 7187 / 7942

Fax : +603-8888 9248

Email : jpbkkp[at]dosm.gov.my

Contact person:

Baharudin Mohamad
Public Relation Officer
Strategic Communication and International Division
Department of Statistics Malaysia

Tel : +603-8090 4681

Fax : +603-8888 9248

Email : baharudin[at]dosm.gov.my

Copyright ©2025 Department of Statistics Malaysia Official Portal. All Rights Reserved.