



MINISTRY OF ECONOMY
DEPARTMENT OF STATISTICS MALAYSIA

SELECTED AGRICULTURAL INDICATORS, MALAYSIA, 2019

Oil palm contributed 37.7 per cent to the value added of Agriculture sector in 2019

Selected Agricultural Indicators, Malaysia, 2020 comprised of statistics on economic performance, employment, domestic production and external trade in the agriculture sector. These statistics are presented in three main agriculture sub-sectors namely crops, livestock and fisheries.

The agriculture sector contributed 7.1 per cent (RM101.5 billion) to the Gross Domestic Product (GDP) in 2019. Oil palm was the major contributor to the value added of agriculture sector at 37.7 per cent followed by other agriculture (25.9%), livestock (15.3%), fishing (12.0%), forestry & logging (6.3%) and rubber (3.0%).

Exports of agriculture sector in 2019 amounted to RM115.5 billion as compared to RM114.5 billion in 2018, increased by 0.9 per cent. Total imports was valued at RM93.5 billion as compared to 2018 at RM93.3 billion with an increase of 0.2 per cent. Trade balance of this sector rose by 4.1 per cent from RM21.1 billion in 2018 to RM22.0 billion in 2019.

The production of main commodity crops namely oil palm (fresh fruit bunches) and natural rubber increased by 646.0 thousand tonnes (0.7 per cent) and 36.5 thousand tonnes (6.1 per cent) respectively in 2019 as compared to the previous year. On the contrary, the production of paddy declined by 11.0 per cent from 2,639.2 thousand tonnes to 2,348.9 thousand tonnes for the same period.

The number of ducks increased 7.6 per cent to 10.4 million in 2019 followed by chicken (5.8%) and goat (3.5%). Meanwhile, the number of both swine and sheep decreased by 0.8 per cent and 0.4 per cent respectively.

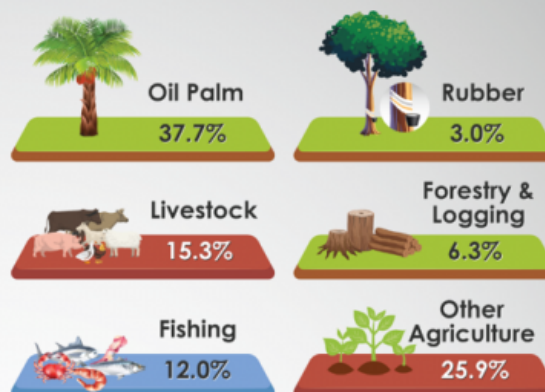
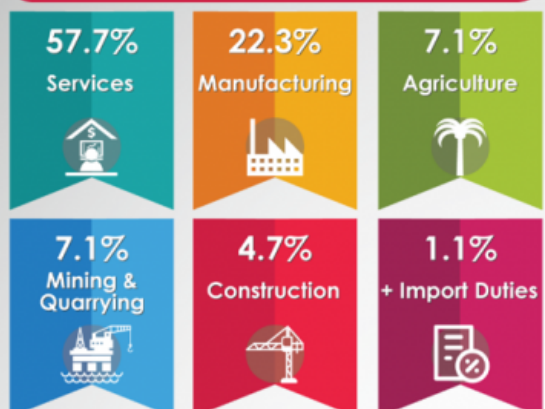
Total marine fish landings in 2019 was 1,455.4 thousand tonnes, rose by 0.2 per cent against 1,452.9 thousand tonnes in 2018. Production of brackishwater and freshwater aquaculture also showed an increase of 17.0 thousand tonnes (5.9%) and 3.3 thousand tonnes (3.3%) respectively.

Employed persons in the agriculture sector recorded 1,541.1 thousand persons in 2019 and dominated by males at 79.2 per cent (1,220.9 thousand persons).



GDP 2019 – PERCENTAGE SHARE BY KIND OF ECONOMIC ACTIVITY (CONSTANT 2015 PRICES)

GDP 2019^p : RM 1,421.5 billion



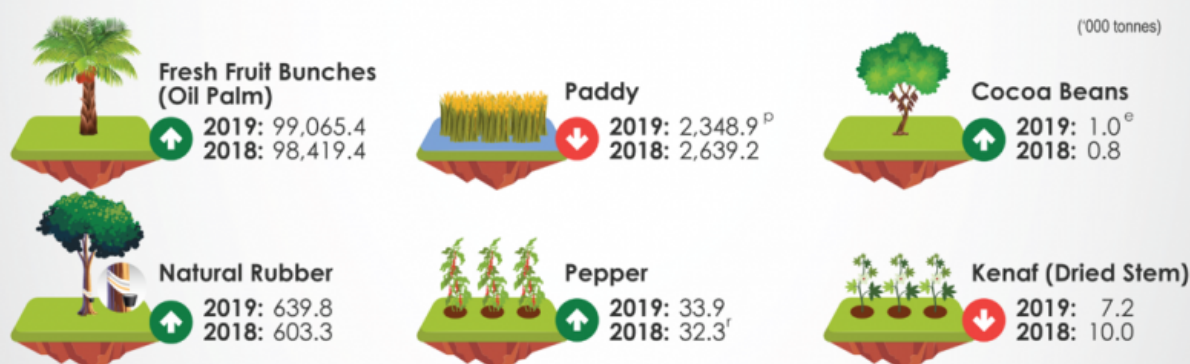
Source: Annual Gross Domestic Product 2015-2019

EXTERNAL TRADE IN AGRICULTURE SECTOR



Source: Ministry of Agriculture and Food Industries

PRODUCTION OF SELECTED CROPS



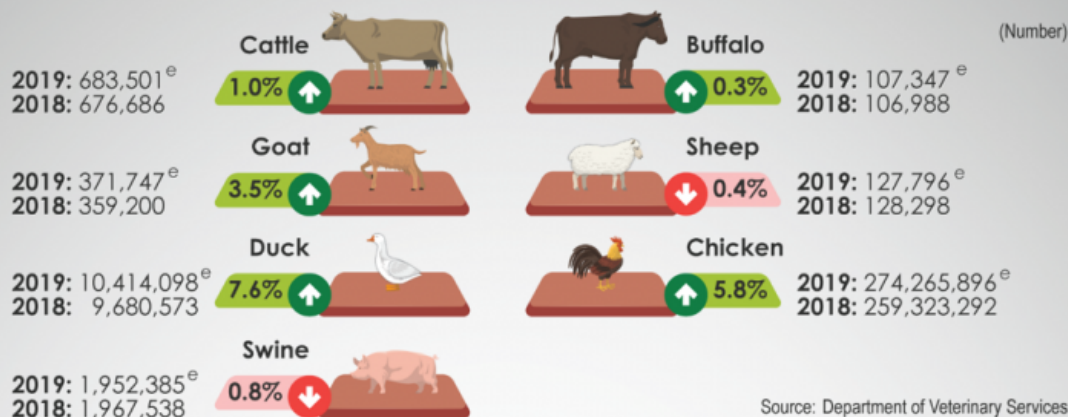
Source: Department of Agriculture Malaysia, Malaysian Palm Oil Board, Malaysian Cocoa Board, Malaysian Pepper Board and National Kenaf and Tobacco Board

p = preliminary e = estimates r = revised

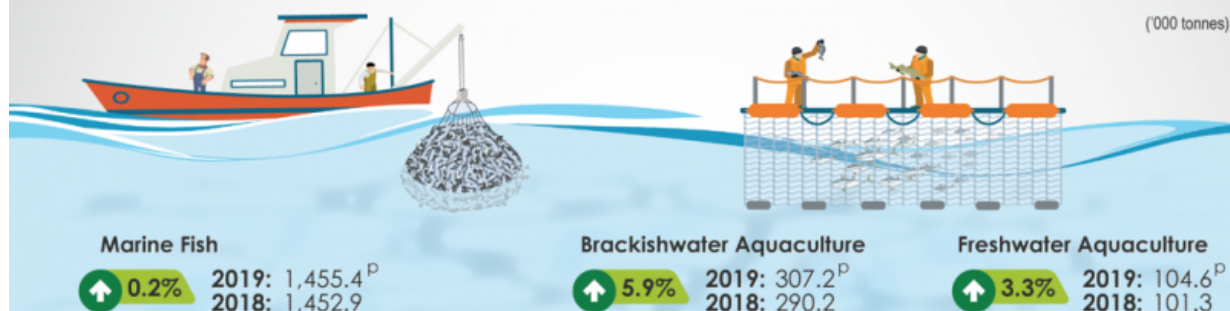
Source: Selected Agricultural Indicators, Malaysia, 2020 Department of Statistics Malaysia



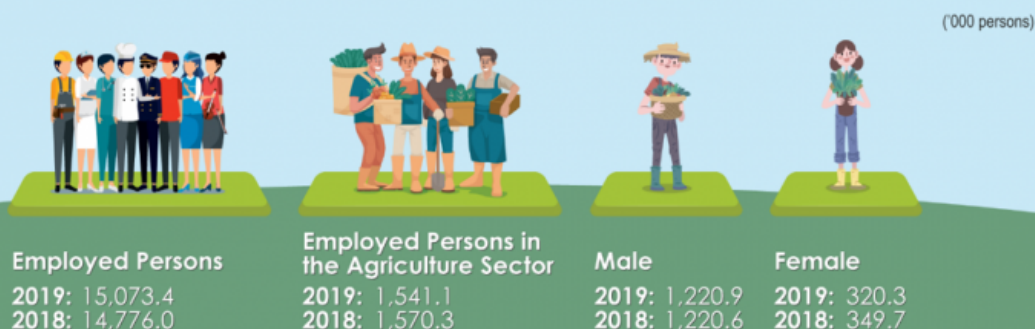
NUMBER OF LIVESTOCK



MARINE FISH LANDING AND PRODUCTION OF AQUACULTURE



EMPLOYED PERSONS IN THE AGRICULTURE SECTOR



Source: Labour Force Survey, Malaysia, 2019

p = preliminary e = estimates

Source: Selected Agricultural Indicators, Malaysia, 2020 Department of Statistics Malaysia

Released By:

DATO' SRI DR. MOHD UZIR MAHIDIN
CHIEF STATISTICIAN MALAYSIA
DEPARTMENT OF STATISTICS, MALAYSIA

 **DrUzir_Mahidin**   **Dr_Uzir**

#myHariBulan# #myBulan# #myTahun#

Contact person:

Mohd Yusrizal bin Ab. Razak
Public Relation Officer
Strategic Communication and International Division
Department of Statistics, Malaysia
Tel : +603-8885 7942
Fax : +603-8888 9248
Email : yusrizal.razak[at]dosm.gov.my

Contact person:

Baharudin Mohamad
Public Relation Officer
Strategic Communication and International Division
Department of Statistics Malaysia
Tel : +603-8090 4681
Fax : +603-8888 9248
Email : baharudin[at]dosm.gov.my

Copyright ©2025 Department of Statistics Malaysia Official Portal. All Rights Reserved.