



MINISTRY OF ECONOMY
DEPARTMENT OF STATISTICS MALAYSIA

SELECTED AGRICULTURAL INDICATORS, MALAYSIA, 2017

Selected Agricultural Indicators, Malaysia, 2018 contains statistics on economic performance, employment, domestic production and external trade for the agriculture sector. These statistics are presented in three main agriculture sub-sectors namely crops, livestock and fisheries.

The agriculture sector contributed 8.2 per cent or RM96.0 billion to the Gross Domestic Product (GDP) in 2017. Oil palm was a major contributor to the GDP of agriculture sector at 46.6 per cent followed by other agriculture (18.6%), livestock (11.4%), fishing (10.5%), rubber (7.3%) and forestry & logging (5.6%).

Exports and imports of agriculture sector amounted to RM126,587 million and RM95,218 million respectively with the trade balance of RM31,369 million. Both exports and imports of this sector showed an increase in 2017 as compared to 2016.

The highest production of crops was recorded by fresh fruit bunches (oil palm) at 101,741.0 thousand tonnes, gained 17.9 per cent. Production of natural rubber and pepper also increased by 66.6 thousand tonnes (9.9%) and 1.2 thousand tonnes (4.1%) respectively. Kenaf (dried stem), cocoa beans and paddy showed a decrease.

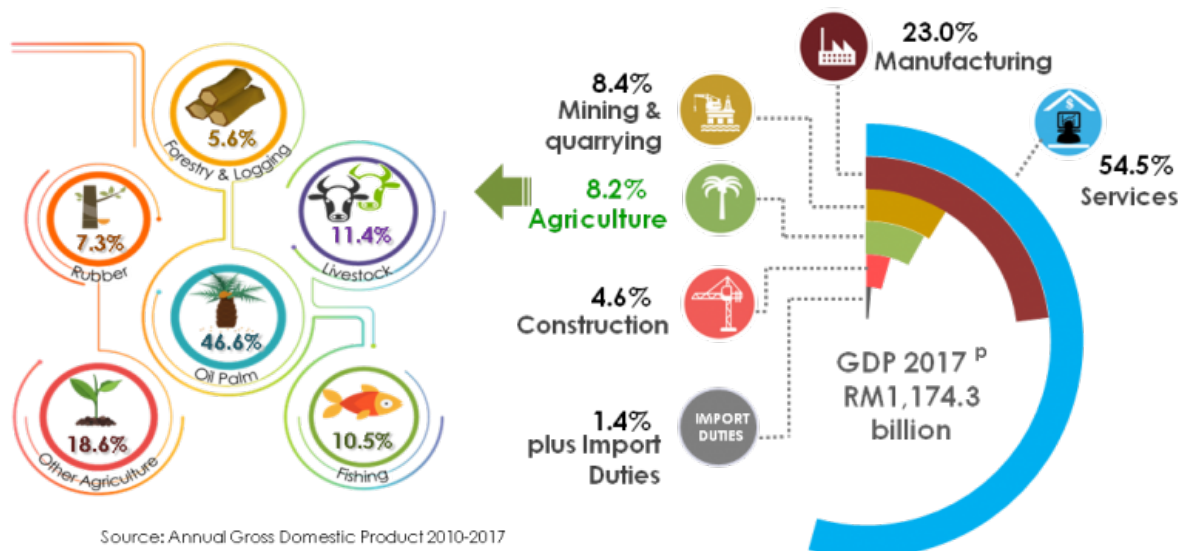
For the livestock sub-sector, chicken recorded the highest number of 308.3 million as compared to other livestock in 2017. This was followed by duck (10.4 million) and swine (1.6 million). Meanwhile, goat recorded the lowest number of 0.7 million.

Production of brackishwater aquaculture was 324.3 thousand tonnes, rose by 6.7 per cent against 304.0 thousand tonnes in the preceding year. The production of freshwater aquaculture and marine fish landings dropped by 0.8 per cent and 7.5 per cent respectively.

Number of employed persons in the agriculture sector gained by 21.7 thousand (1.3%), from 1,609.9 thousand to 1,631.6 thousand in 2017 and this sector was dominated by males (77.2%).



GDP 2017 – PERCENTAGE SHARE BY KIND OF ECONOMIC ACTIVITY (CONSTANT 2010 PRICES)



Source: Annual Gross Domestic Product 2010-2017

EXTERNAL TRADE OF AGRICULTURE SECTOR



Exports

2017: RM126,587 million
2016: RM115,693 million

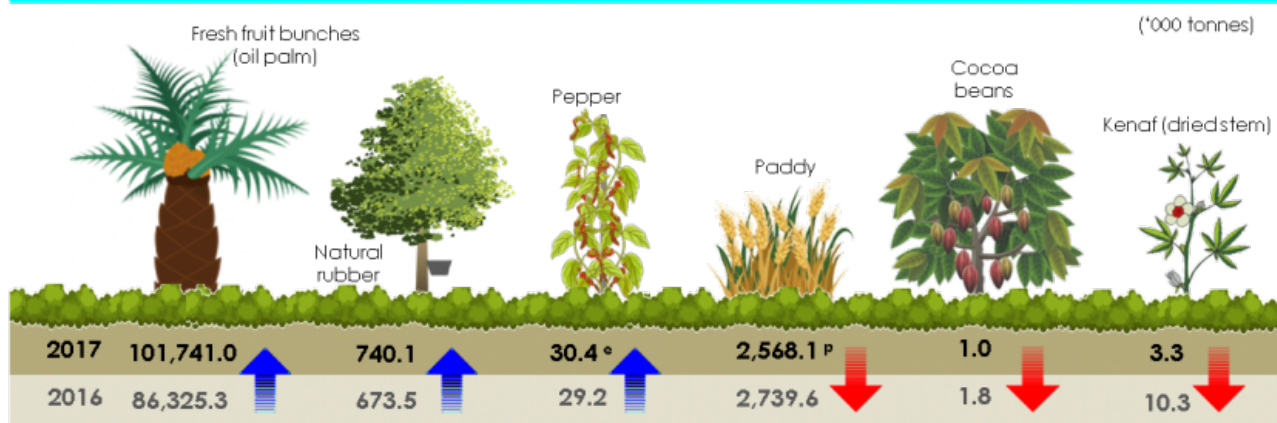


Imports

2017: RM95,218 million
2016: RM84,666 million

Source: Ministry of Agriculture and Agro-based Industry

PRODUCTION OF SELECTED CROPS



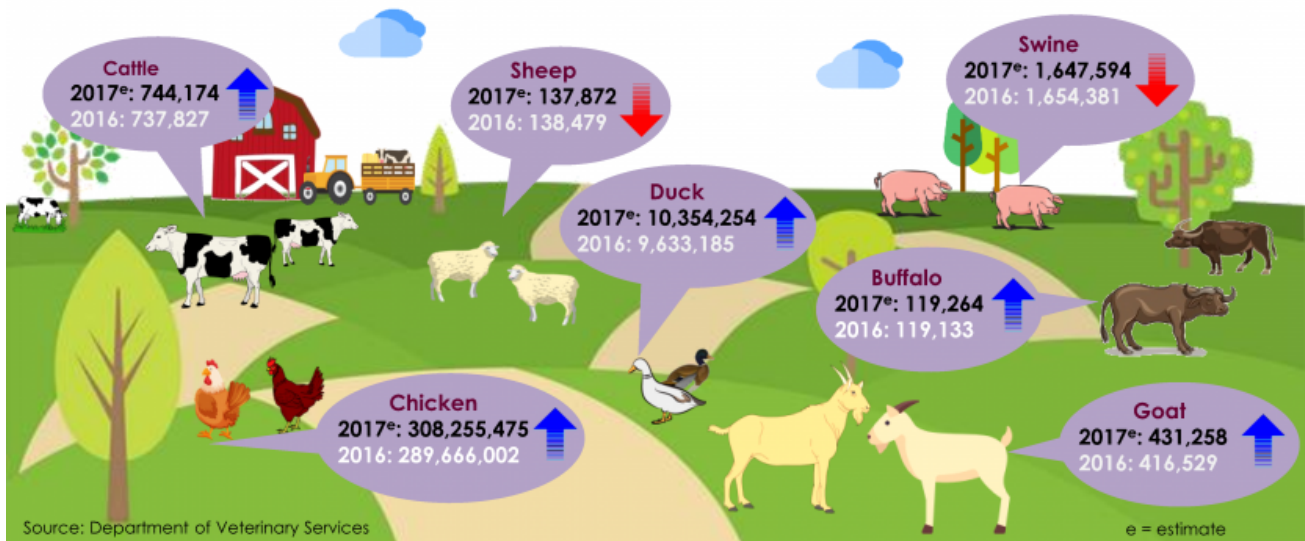
Source: Booklet of Crops Statistics 2018 (Food Crops Sub-sector) - Department of Agriculture Malaysia, Malaysian Palm Oil Board, Malaysian Cocoa Board, Malaysian Pepper Board and National Kenaf and Tobacco Board

p = preliminary e = estimate

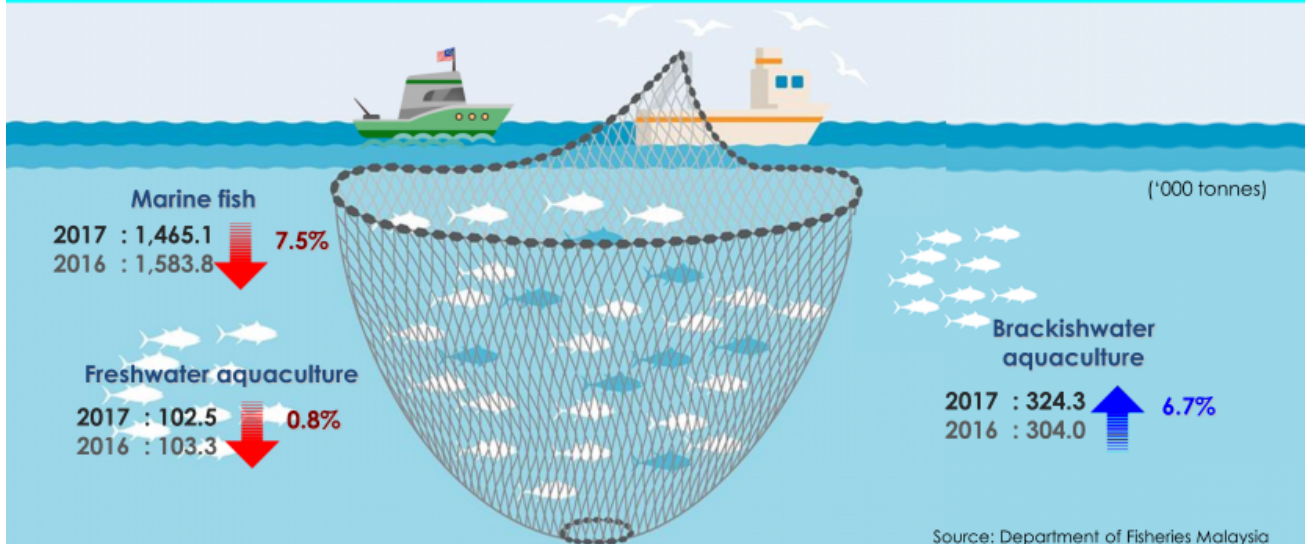
Source : Selected Agricultural Indicators, Malaysia, 2018
Department of Statistics Malaysia

NUMBER OF LIVESTOCK

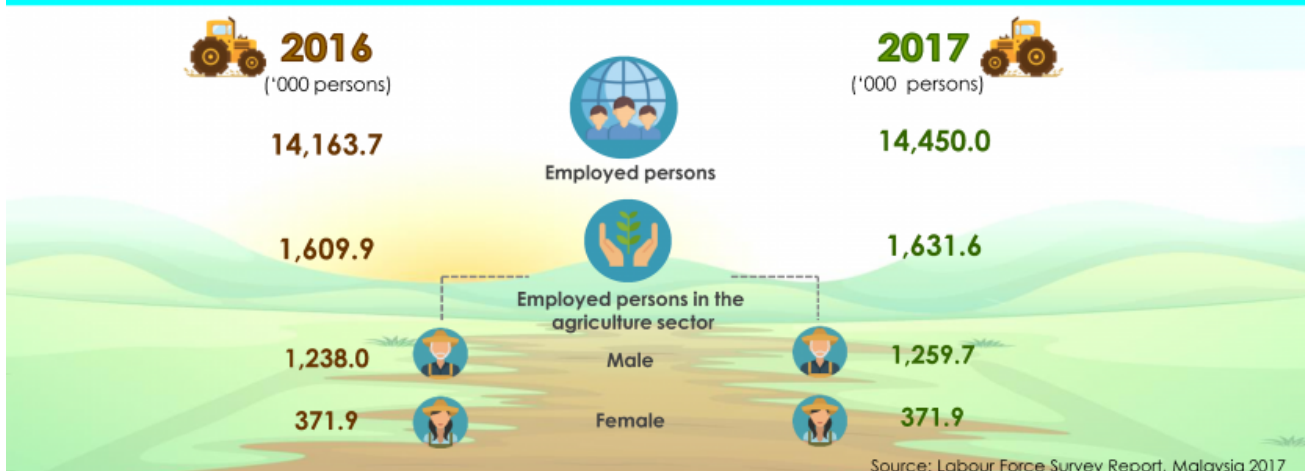
(Number)



MARINE FISH LANDING AND PRODUCTION OF AQUACULTURE



EMPLOYED PERSONS IN THE AGRICULTURE SECTOR



Source : Selected Agricultural Indicators, Malaysia, 2018
Department of Statistics Malaysia

Released By:

DATO' SRI DR. MOHD UZIR MAHIDIN
CHIEF STATISTICIAN MALAYSIA
DEPARTMENT OF STATISTICS, MALAYSIA

 **DrUzir_Mahidin**   **Dr_Uzir**

#myHariBulan# #myBulan# #myTahun#

Contact person:

Ho Mei Kei
Public Relation Officer
Strategic Communication and International Division
Department of Statistics, Malaysia
Tel : +603-8885 7942
Fax : +603-8888 9248
Email : mkho[at]dosm.gov.my

Contact person:

Baharudin Mohamad
Public Relation Officer
Strategic Communication and International Division
Department of Statistics Malaysia
Tel : +603-8090 4681
Fax : +603-8888 9248
Email : baharudin[at]dosm.gov.my

Copyright ©2026 Department of Statistics Malaysia Official Portal. All Rights Reserved.