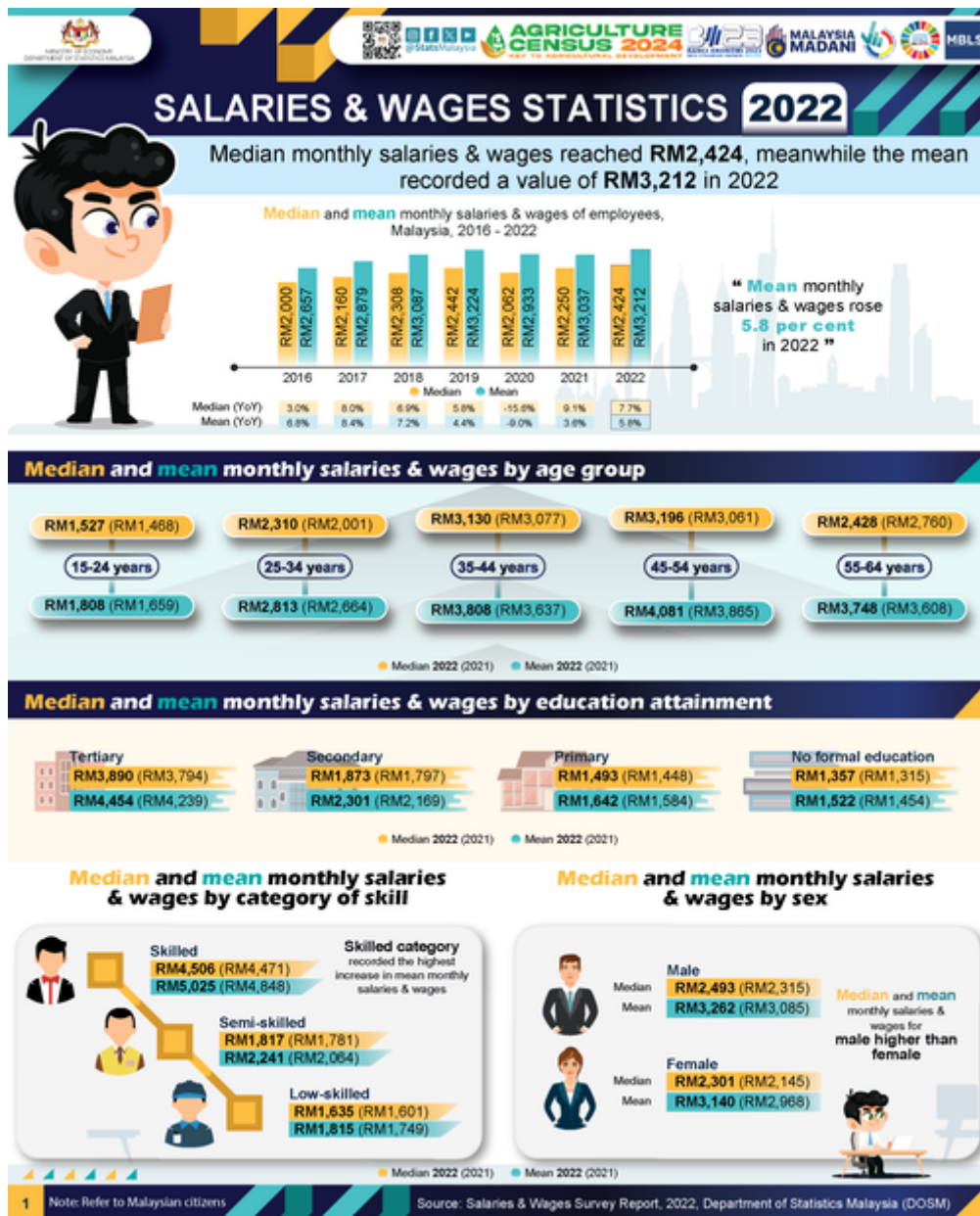




MINISTRY OF ECONOMY  
DEPARTMENT OF STATISTICS MALAYSIA

## SALARIES AND WAGES SURVEY REPORT 2022



- Entering 2022, all states were in Phase 4 of the National Recovery Plan (PPN), this situation encouraged the economic performance as businesses were allowed to operate with extended hours and most restrictions were eased. Starting from April 1, 2022, parallel with the country's transition to the endemic phase and the reopening of international borders to tourists, the tourism industry and related sectors had further recovered. Hence, this created more opportunities for the labour market to stabilise and sustain its positive performance in the upcoming years.
- In 2022, the number of recipients who received salaries & wages increased by 2.4 per cent, reaching a total of 9.95 million persons (2021: 9.71 million persons). However, this increment was lower than in 2021 with an increase of 3.4 per cent. The median monthly salaries & wages remained on a positive trend with 7.7 per cent, reaching RM2,424 as compared to RM2,250 in 2021 which registered a 9.1 per cent growth rate.
- Likewise, the mean monthly salaries & wages also increased by 5.8 per cent to record RM3,212 as compared to RM3,037 in 2021 with a growth rate of 3.6 per cent. This increase reflects improved earning potential for a significant portion of the workforce.
- In 2022, the median monthly salaries & wages for both male and female employees remained in an increasing trend. Male employees showed an increase of 7.7 per cent to record RM2,493 (2021: RM2,315) while median monthly salaries & wages females rose by 7.3 per cent to RM2,301 (2021: RM2,145). Comparing the monthly salaries & wages by sex, it was observed that male employees earned about 8.3 per cent (RM192) higher median monthly salaries & wages than females.
- Likewise, the mean monthly salaries & wages for male employees in 2022 improved by 5.7 per cent or equivalent to RM177 to register RM3,262 (2021: RM3,085). Similarly, female employees posted an improvement of 5.8 per cent or RM172 to RM3,140 as against RM2,968 in the preceding year.

The full publication of the Salaries & Wages Statistics, 2022 can be downloaded from eStatistik portal.

**Contact person:**

Baharudin Mohamad  
Public Relation Officer  
Strategic Communication and International Division  
Department of Statistics Malaysia  
Tel : +603-8090 4681  
Fax : +603-8888 9248  
Email : baharudin[at]dosm.gov.my

**Copyright ©2025 Department of Statistics Malaysia Official Portal. All Rights Reserved.**