



MINISTRY OF ECONOMY
DEPARTMENT OF STATISTICS MALAYSIA

REPORT ON HOUSEHOLD EXPENDITURE SURVEY 2016

 Jabatan Perangkaan Malaysia
<https://www.dosm.gov.my>

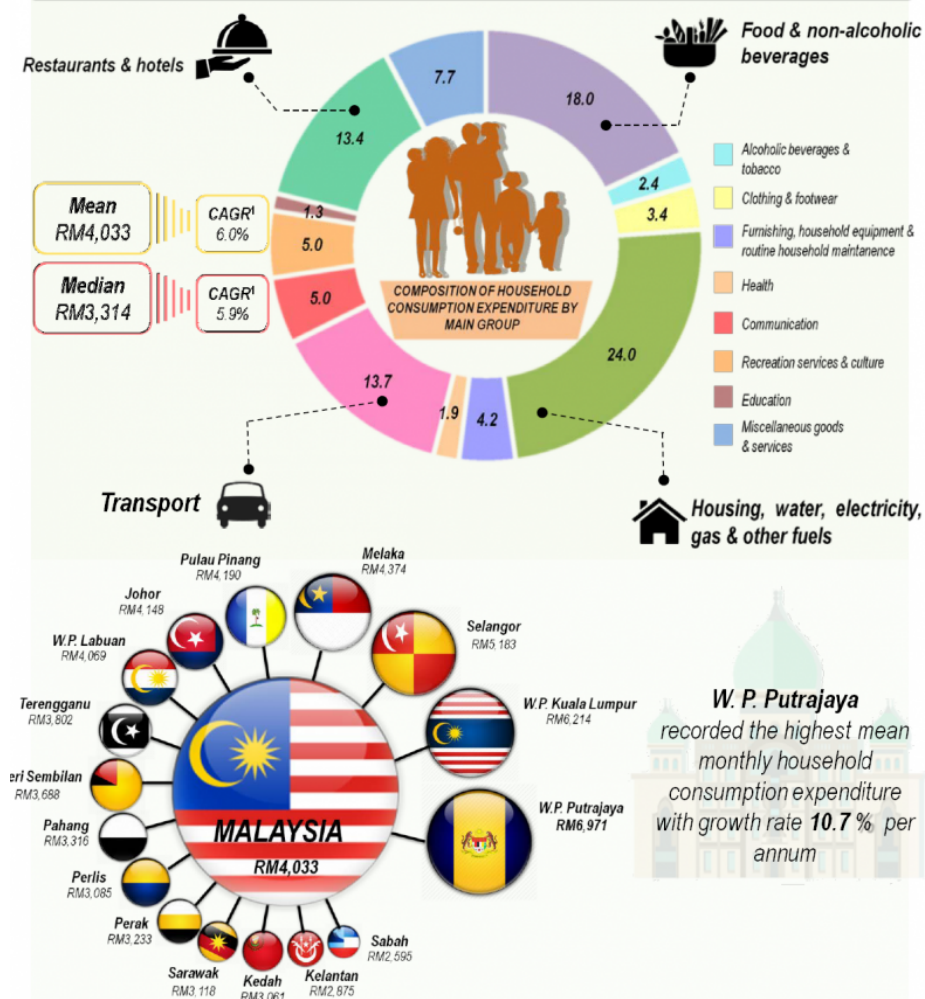
 www.facebook.com/statsMalaysia

 twitter.com/statsMalaysia

AT A GLANCE... HOUSEHOLD EXPENDITURE SURVEY 2016



SUMMARY OF FINDINGS



¹Compounded Annual Growth Rate (2014-2016)(%)

The household consumption expenditure statistics is obtained based on the findings from Household Expenditure Survey (HES) conducted in 2016. The surveys has been carried out using personal interview approach in 12 months period in 2016 covered urban and rural area for all states. The survey is carried out by probability sampling that represents all households in Malaysia.

KEY FINDINGS

Mean Monthly Household Consumption Expenditure

The mean monthly household consumption expenditure for Malaysia increased from RM3,578 in 2014 to RM4,033 in 2016 which grew at 6.0 per cent per annum at nominal value. In terms of real value¹, annual growth rate is 3.9 per cent for the same period.

The mean monthly household consumption expenditure in urban showed an increment of 5.8 per cent yearly from RM3,921 to RM4,402, meanwhile rural also increased at 5.7 per cent annually from RM2,431 to RM2,725 during the period of 2014 to 2016.

Mean Monthly Household Consumption Expenditure By State

In 2016, W.P. Putrajaya recorded the highest mean monthly household consumption expenditure (RM6,971), followed by W.P. Kuala Lumpur (RM6,214), Selangor (RM5,183), Melaka (RM4,374), Pulau Pinang (RM4,190), Johor (RM4,148) and W.P. Labuan (RM4,069). Other states recorded the mean monthly household consumption expenditure below the national level (RM4,033).

All states recorded an increase in the mean monthly household consumption expenditure. During the period, eight states exceeded the national growth rate of 6.0 per cent. W.P. Putrajaya recorded the highest growth rate at 10.7 per cent, followed by Terengganu (10.4%), Perlis (9.0%), Pulau Pinang (8.9%), Negeri Sembilan (8.4%), Perak (7.9%), W.P. Labuan (7.6%) and Melaka (6.9%).

Composition of Monthly Household Consumption Expenditure

In 2016, Malaysian main household consumption expenditure was on Main Group i.e Housing, water, electricity, gas & other fuels; Food & non-alcoholic beverages; Transport; and Restaurants & hotels (69.1%). Housing, water, electricity, gas & other fuels (24.0%) was the highest contributor to the overall household consumption expenditure, followed by Food & non-alcoholic beverages (18.0%); Transportation (13.7%); and Restaurants & hotels (13.4%). The composition of Restaurant & hotel increased by 0.7 per cent in 2016 as compared to 12.7 per cent in 2014. However, the composition of Main Group of Food & non-alcoholic beverages declined by 0.9 per cent in 2016 as compared to 18.9 per cent in 2014.

The detailed information regarding this report can be accessed through the [eStatistik](#) application in Department of Statistics Malaysia website, www.dosm.gov.my.

Note: ¹ The calculation of real value refers to constant price using the Consumer Price Index with the base year 2010 as the deflator.

Released By:

DR. MOHD UZIR MAHIDIN
CHIEF STATISTICIAN, MALAYSIA
DEPARTMENT OF STATISTICS, MALAYSIA
#myHariBulan# #myBulan# #myTahun#

Contact person:

Ho Mei Kei

Public Relation Officer

Corporate and User Services Division

Department of Statistics, Malaysia

Tel : +603-8885 7942

Fax : +603-8888 9248

Email : mkho[at]stats.gov.my

Contact person:

Baharudin Mohamad

Public Relation Officer

Strategic Communication and International Division

Department of Statistics Malaysia

Tel : +603-8090 4681

Fax : +603-8888 9248

Email : baharudin[at]dosm.gov.my

Copyright ©2025 Department of Statistics Malaysia Official Portal. All Rights Reserved.