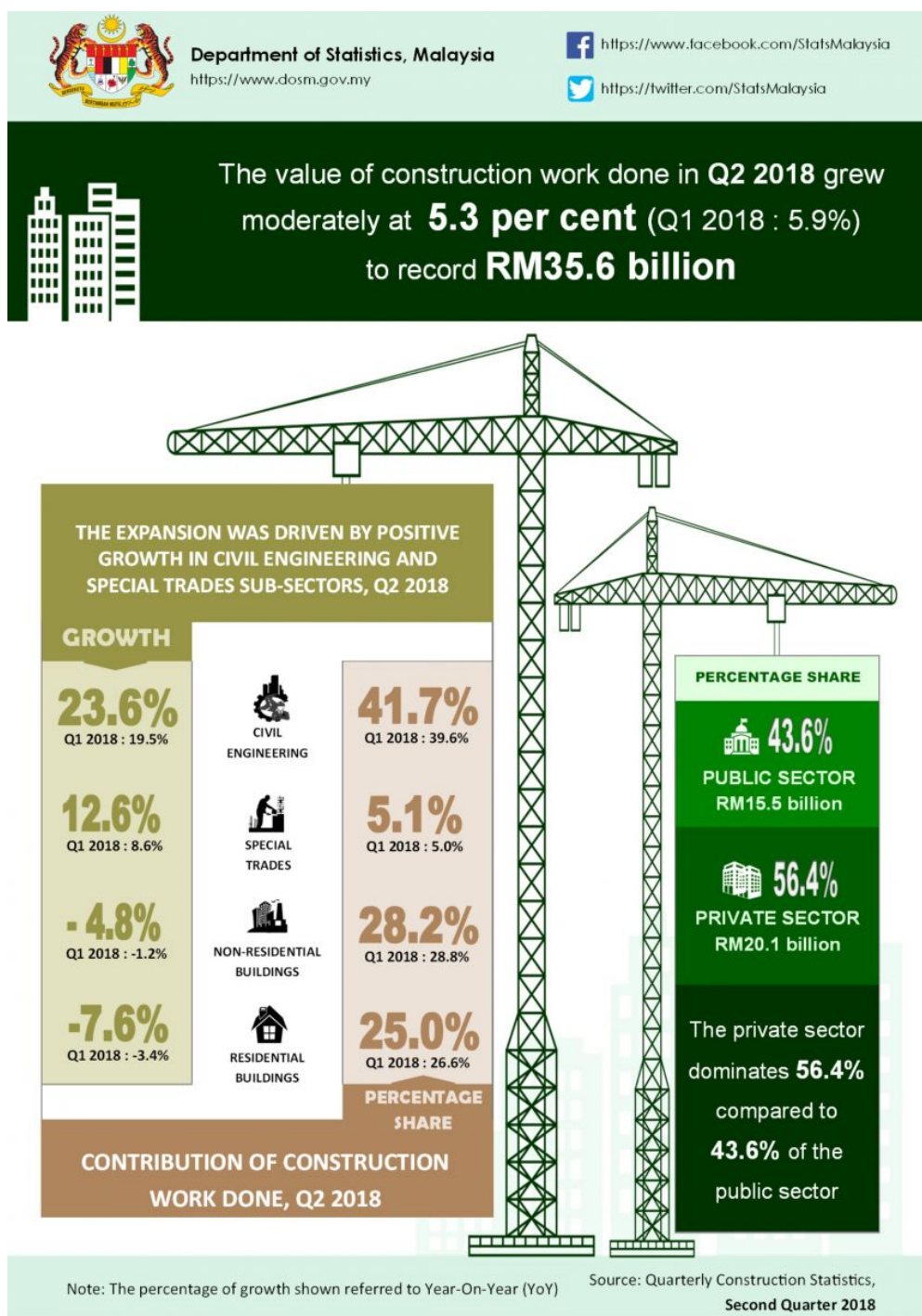




MINISTRY OF ECONOMY  
DEPARTMENT OF STATISTICS MALAYSIA

## QUARTERLY CONSTRUCTION STATISTICS, SECOND QUARTER 2018



## Performance of construction sector

The value of construction work done in the second quarter 2018 recorded a moderate growth of **5.3 per cent** year-on-year to record **RM35.6 billion** (Q1 2018: RM37.1 billion).

The expansion in value of construction work done was driven by positive growth in Civil engineering sub-sector with **23.6 per cent** and Special trades activities sub-sector with **12.6 per cent**. However, the Residential buildings and Non-residential sub-sector declined to **7.6 per cent** and **4.8 per cent** respectively.

In terms of contributions, Civil engineering sub-sector continued to dominate the performance of value of construction work done with **41.7 per cent** share, followed by Non-residential buildings (28.2%), Residential buildings (25.0%) and Special trades activities (5.1%).

The private sector continued to propelled the construction activity with **56.4 per cent** share (RM20.1 billion) as compared to the public sector with **43.6 per cent** share (RM15.5 billion).

### \*Notes:

Data for second quarter 2018 is **provisional**. The data will be updated based on the latest available figures and subsequently published in the publication third quarter 2018.

### Released By:

**DATO' SRI DR. MOHD UZIR MAHIDIN**  
**CHIEF STATISTICIAN MALAYSIA**  
**DEPARTMENT OF STATISTICS, MALAYSIA**



DrUzir\_Mahidin



Dr\_Uzir

**#myHariBulan# #myBulan# #myTahun#**

### Contact person:

Ho Mei Kei  
Public Relation Officer  
Strategic Communication and International Division  
Department of Statistics, Malaysia  
**Tel** : +603-8885 7942  
**Fax** : +603-8888 9248  
**Email** : mkho[at]dosm.gov.my

### Contact person:

Baharudin Mohamad  
Public Relation Officer  
Strategic Communication and International Division  
Department of Statistics Malaysia  
**Tel** : +603-8090 4681  
**Fax** : +603-8888 9248  
**Email** : baharudin[at]dosm.gov.my

