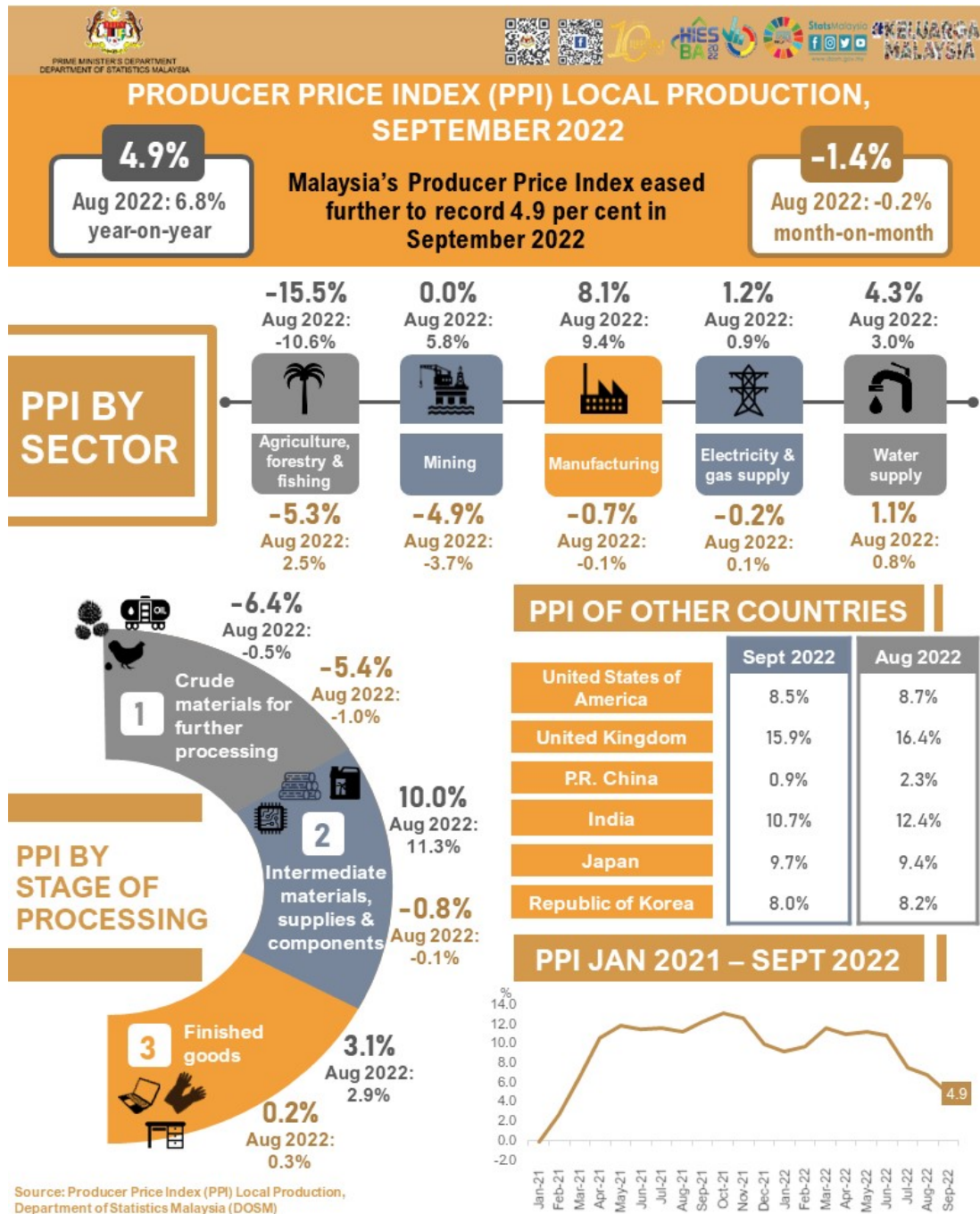




MINISTRY OF ECONOMY  
DEPARTMENT OF STATISTICS MALAYSIA

PRODUCER PRICE INDEX MALAYSIA SEPTEMBER 2022



## PPI Local Production, September 2021 - September 2022



### PRODUCER PRICE INDEX (2010=100) BY SECTOR (MSIC 2008)

- Producer Price Index (PPI) Local Production eased further to record 4.9 per cent in September 2022 as compared to 6.8 per cent in August 2022.
- The increase was attributed by Manufacturing index with 8.1 per cent (August 2022: 9.4%), followed by indices of Water supply (4.3%) and Electricity & gas supply (1.2%). However, the increase was offset by a decline in the index of Agriculture, forestry & fishing (-15.5%). On the other hand, Mining index remained unchanged as in the same month of the previous year.
- For a monthly comparison, PPI Local Production posted a decline for four consecutive months to record negative 1.4 per cent in September 2022 (August 2022: -0.2%). All sectors recorded a decline except for Water supply index that rose 1.1 per cent. The index of Agriculture, forestry & fishing fell negative 5.3 per cent and was followed by the indices of Mining (-4.9%), Manufacturing (-0.7%) and Electricity & gas supply (-0.2%).
- In addition, PPI Local Production recorded an increase of 6.5 per cent in the third quarter of 2022, down from 11.1 per cent posted in the second quarter of 2022. The increase was supported by the indices of Manufacturing (9.1%), Mining (4.9%), Water supply (3.1%) and Electricity & gas supply (0.9%). However, the incline was also offset by a decrease of negative 12.1 per cent posted by Agriculture, forestry & fishing index. Meanwhile, PPI Local Production fell negative 2.6 per cent in the third quarter of 2022 (Q2 2022: 3.3%) on a quarter-on-quarter basis.
- In terms of PPI Local Production by stage of processing, Crude materials for further processing index continued to decline with negative 6.4 per cent in September 2022 (August 2022: -0.5%). Furthermore, Intermediate materials, supplies & components index increased 10.0 per cent (August 2022: 11.3%) while Finished goods index edged up 3.1 per cent.
- For a monthly comparison, the index of Crude materials for further processing declined by negative 5.4 per cent, followed by Intermediate materials, supplies & components index (-0.8%). However, Finished goods index increased 0.2 per cent.

The full publication of the Producer Price Index Malaysia, September 2022 can be downloaded from [eStatistik](#) portal.

**Released by:**

**DEPARTMENT OF STATISTICS MALAYSIA**  
**28<sup>th</sup> OCTOBER 2022**

**Contact person:**

**Baharudin Mohamad**

Public Relation Officer

Strategic Communication and International Division

Department of Statistics, Malaysia

**Tel :** +603-8885 7942

**Fax :** +603-8888 9248

**Email:** baharudin[at]dosm.gov.my

**Contact person:**

Baharudin Mohamad

Public Relation Officer

Strategic Communication and International Division

Department of Statistics Malaysia

Tel : +603-8090 4681

Fax : +603-8888 9248

Email : baharudin[at]dosm.gov.my

**Copyright ©2026 Department of Statistics Malaysia Official Portal. All Rights Reserved.**