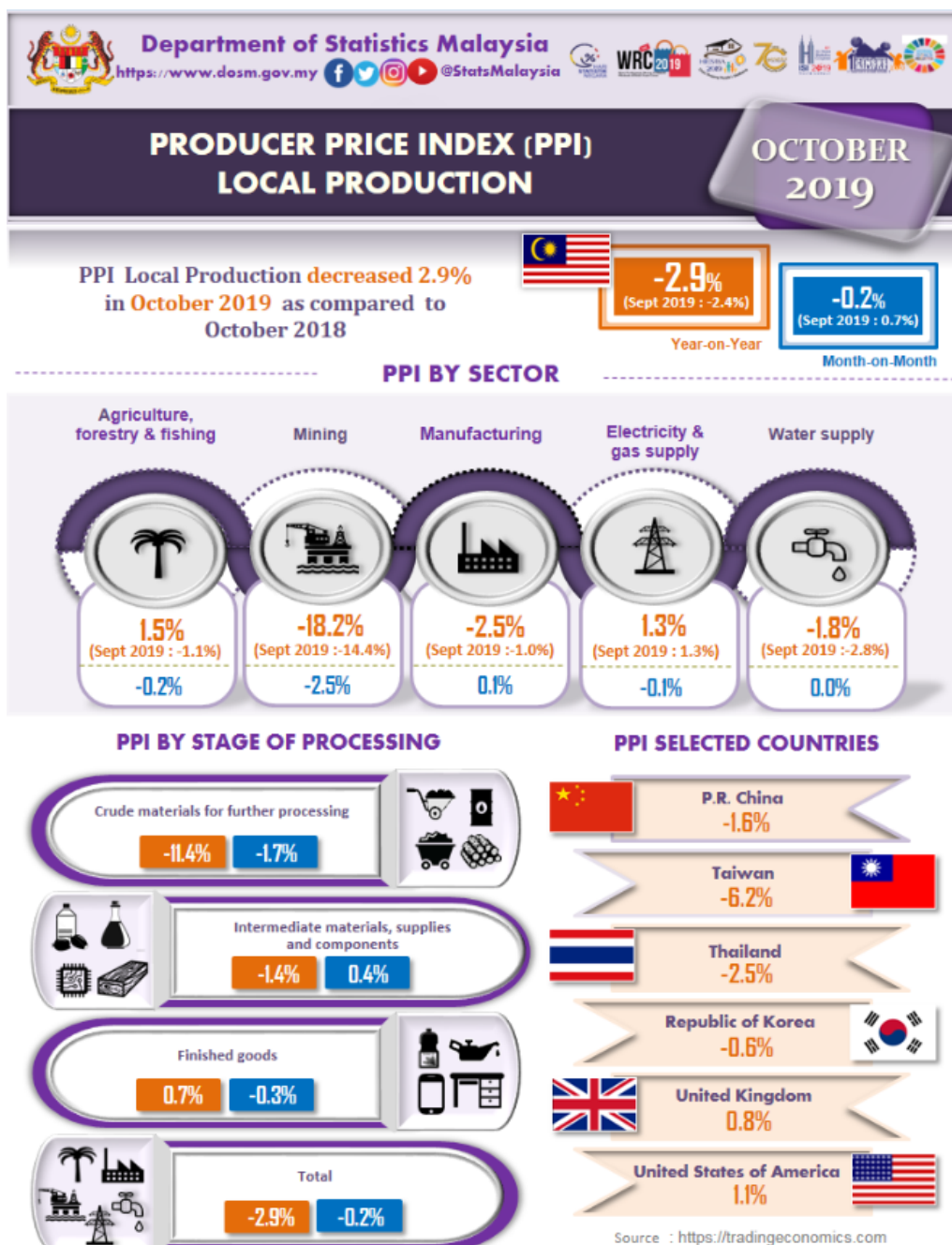




MINISTRY OF ECONOMY
DEPARTMENT OF STATISTICS MALAYSIA

PRODUCER PRICE INDEX MALAYSIA OCTOBER 2019



Source : Producer Price Index Local Production (2010=100) October 2019, Department of Statistics Malaysia

PRODUCER PRICE INDEX (2010=100) BY SECTOR (MSIC 2008)

The Producer Price Index (PPI) local production declined 2.9 per cent in October 2019 to 105.1 as against 108.2 in the same month of the preceding year. The index of Mining declined 18.2 per cent, followed by Water supply (-1.8%) and Manufacturing (-1.3%) indices. In contrast, the index of Agriculture, forestry & fishing and Electricity & gas supply rose 1.5 per cent and 1.3 per cent respectively.

As compared to the previous month, the PPI local production decreased 0.2 per cent in October 2019. This was due to the decline in the index of Mining (-2.5%), Agriculture, forestry & fishing (-0.2%) and Electricity & gas supply (-0.1%) indices. Meanwhile, the index of Manufacturing grew 0.1 per cent and Water supply was unchanged. [Table 1]

Table 1 : Producer Price Index (2010=100) Local Production by Sector (MSIC 2008), Malaysia

Sector	Code	Weights	Index	Percentage Change					
			Oct 2019	Year-on-Year		Oct 2019/ Oct 2018	Month-on-Month		
				Aug 2019/ Aug 2018	Sept 2019/ Sept 2018		Aug 2019/ July 2019	Sept 2019/ Aug 2019	Oct 2019/ Sept 2019
Total		100.000	105.1	-1.9	-2.4	-2.9	0.2	0.7	-0.2
Agriculture, forestry & fishing	A	6.730	94.9	-0.9	-1.1	1.5	5.2	-0.7	-0.2
Mining	B	7.927	100.5	-10.9	-14.4	-18.2	-2.0	6.0	-2.5
Manufacturing	C	81.571	106.1	-1.0	-1.0	-1.3	0.0	0.3	0.1
Electricity & gas supply	D	3.442	117.3	2.2	1.3	1.3	0.4	-0.9	-0.1
Water supply	E	0.330	111.6	-2.6	-2.8	-1.8	0.2	0.0	0.0

PRODUCER PRICE INDEX BY STAGE OF PROCESSING

In October 2019, the PPI local production by stage of processing (SOP) declined 2.9 per cent as compared to October 2018. It was contributed by Crude materials for further processing (-11.4%) and Intermediate materials, supplies & components (-1.4%). However, the index for Finished goods rose 0.7 per cent.

On a monthly basis, the PPI local production by SOP for October 2019 decreased 0.2 per cent as compared to September 2019. The decrease was contributed by Crude materials for further processing (-1.7%) and Finished goods (-0.3%). Conversely, Intermediate materials, supplies and components rose 0.4 per cent.[Table 2]

Table 2 : Producer Price Index (2010=100), Local Production by Stage of Processing

Stage of Processing	Code	Weights	Index Oct 2019	Percentage Change					
				Year-on-Year		Month-on-Month			
				Aug 2019/ Aug 2018	Sept 2019/ Sept 2018	Oct 2019/ Oct 2018	Aug 2019/ July 2019	Sept 2019/ Aug 2019	Oct 2019/ Sept 2019
Total		100.000	105.1	-1.9	-2.4	-2.9	0.2	0.7	-0.2
Crude materials for further processing	1	16.410	104.4	-7.5	-8.5	-11.4	-0.6	3.0	-1.7
Intermediate materials, supplies and components	2	56.119	106.8	-1.7	-1.8	-1.4	0.4	0.1	0.4
Finished goods	3	27.471	101.8	1.8	1.3	0.7	0.3	0.3	-0.3

Released by:

DATO' SRI DR. MOHD UZIR MAHIDIN
CHIEF STATISTICIAN MALAYSIA
DEPARTMENT OF STATISTICS, MALAYSIA

 DrUzir_Mahidin   Dr_Uzir

28 November 2019

Contact person:

Rohaida binti Mohamad
Public Relation Officer
Strategic Communication and International Division
Department of Statistics, Malaysia
Tel : +603-8885 7942
Fax : +603-8888 9248
Email : rohaida.mohamad[at]dosm.gov.my

Contact person:

Baharudin Mohamad

Public Relation Officer
Strategic Communication and International Division
Department of Statistics Malaysia
Tel : +603-8090 4681
Fax : +603-8888 9248
Email : baharudin[at]dosm.gov.my

Copyright ©2025 Department of Statistics Malaysia Official Portal. All Rights Reserved.