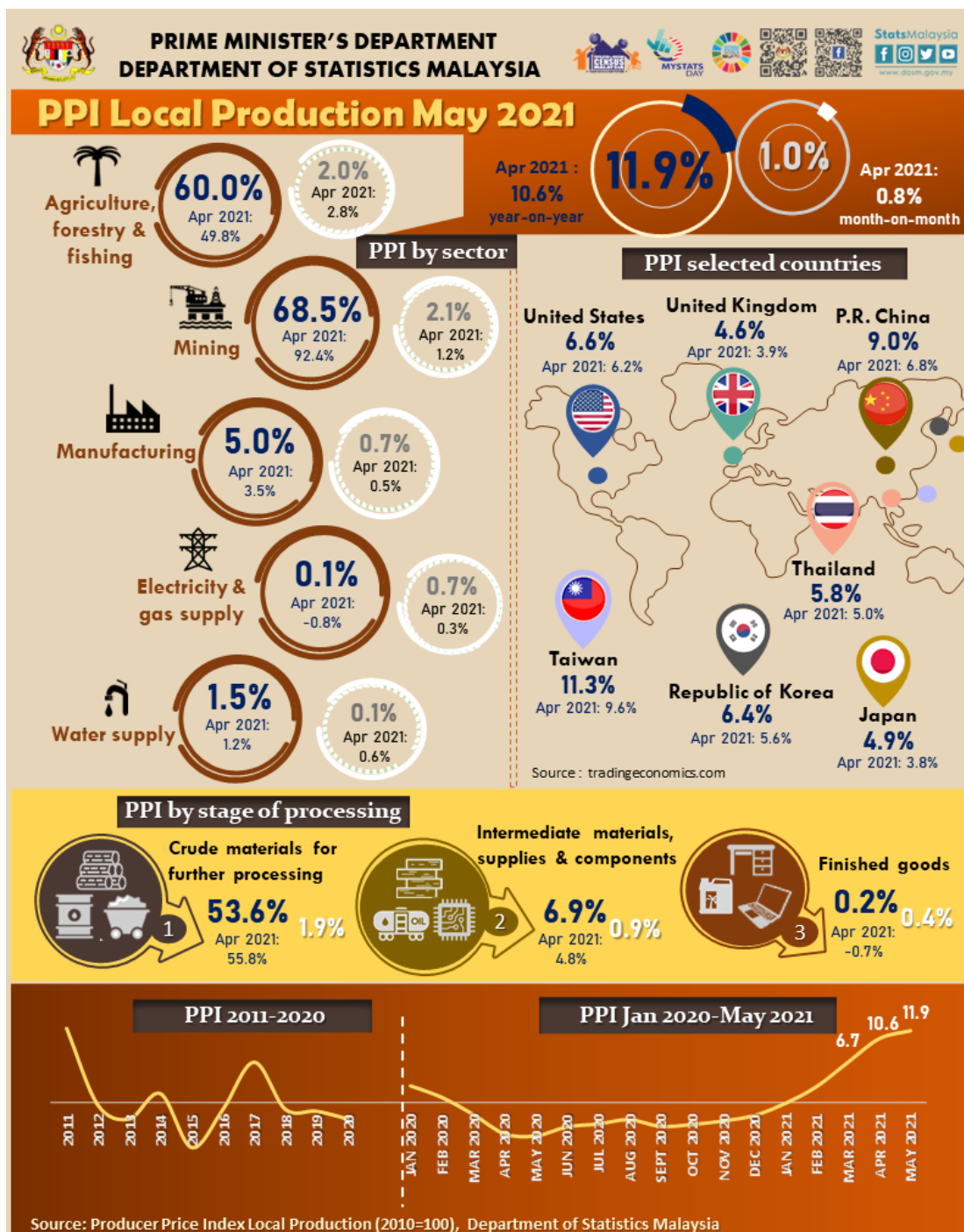




MINISTRY OF ECONOMY  
DEPARTMENT OF STATISTICS MALAYSIA

## PRODUCER PRICE INDEX MALAYSIA MAY 2021



## PRODUCER PRICE INDEX (2010=100) BY SECTOR (MSIC 2008)

In May 2021, the Producer Price Index (PPI) of local production level stood at a new high (111.6 index points) after registering an increase of 11.9 per cent as compared to the same period last year. The incline was driven by the substantial increase in primary industry products which led to the spike of Mining (68.5%) and Agriculture, forestry & fishing (60.0%) indices. Additionally, the Manufacturing index, which was influenced by the rise in primary and construction-related commodities prices, also showed a significant increase (5.0%). Utility indices comprised of Water supply and Electricity & gas supply also increased by 1.5 per cent and 0.1 per cent respectively.

On a monthly basis, the PPI local production rose 1.0 per cent in May 2021 as compared to 0.8 per cent in the previous month. The increase was supported by the index of Mining (2.1%), followed by Agriculture, forestry & fishing (2.0%), Manufacturing (0.7%), Electricity & gas supply (0.7%) and Water supply (0.1%).

**Table 1 : Producer Price Index (2010=100) Local Production by Sector (MSIC 2008), Malaysia**

| Sector                          | Code | Weight         | Index        | Percentage Change     |                       |                       |                       |                       |                       |
|---------------------------------|------|----------------|--------------|-----------------------|-----------------------|-----------------------|-----------------------|-----------------------|-----------------------|
|                                 |      |                |              | Year-on-Year          |                       |                       | Month-on-Month        |                       |                       |
|                                 |      |                | May 2021     | Mar 2021/<br>Mar 2020 | Apr 2021/<br>Apr 2020 | May 2021/<br>May 2020 | Mar 2021/<br>Feb 2021 | Apr 2021/<br>Mar 2021 | May 2021/<br>Apr 2021 |
| <b>Total</b>                    |      | <b>100.000</b> | <b>111.6</b> | <b>6.7</b>            | <b>10.6</b>           | <b>11.9</b>           | <b>0.7</b>            | <b>0.8</b>            | <b>1.0</b>            |
| Agriculture, forestry & fishing | A    | 6.730          | 150.1        | 41.1                  | 49.8                  | 60.0                  | 2.3                   | 2.8                   | 2.0                   |
| Mining                          | B    | 7.927          | 87.8         | 32.0                  | 92.4                  | 68.5                  | 1.0                   | 1.2                   | 2.1                   |
| Manufacturing                   | C    | 81.571         | 110.6        | 2.2                   | 3.5                   | 5.0                   | 0.6                   | 0.5                   | 0.7                   |
| Electricity & gas supply        | D    | 3.442          | 117.9        | -1.4                  | -0.8                  | 0.1                   | 0.8                   | 0.3                   | 0.7                   |
| Water supply                    | E    | 0.330          | 112.5        | -0.1                  | 1.2                   | 1.5                   | -0.2                  | 0.6                   | 0.1                   |

## PRODUCER PRICE INDEX BY STAGE OF PROCESSING

In May 2021, all stages of processing recorded an increase in price. The index of Crude materials for further processing rose 53.6 per cent in May 2021 as compared to 55.8 per cent recorded in April 2021. The index of Intermediate materials, supplies & components also increased 6.9 per cent. Similarly, the Finished goods index edged up 0.2 per cent.

On a monthly basis, PPI by all stages of processing increased. The index of Crude materials for further processing rose 1.9 per cent, followed by Intermediate materials, supplies & components and Finished goods increase of 0.9 per cent and 0.4 per cent respectively.

**Table 2 : Producer Price Index (2010=100) Local Production by Stage of Processing**

|   |      |         | Index    | Percentage Change     |                       |                       |                       |                       |                       |
|---|------|---------|----------|-----------------------|-----------------------|-----------------------|-----------------------|-----------------------|-----------------------|
|   |      |         |          | Year-on-Year          |                       |                       | Month-on-Month        |                       |                       |
|   |      |         |          |                       |                       |                       |                       |                       |                       |
| Stage of Processing                             | Code | Weight  | May 2021 | Mar 2021/<br>Mar 2020 | Apr 2021/<br>Apr 2020 | May 2021/<br>May 2020 | Mar 2021/<br>Feb 2021 | Apr 2021/<br>Mar 2021 | May 2021/<br>Apr 2021 |
| Total   |      | 100.000 | 111.6    | 6.7                   | 10.6                  | 11.9                  | 0.7                   | 0.8                   | 1.0                   |
| Crude materials for further processing          | 1    | 16.410  | 122.3    |                       | 31.8                  | 55.8                  |                       | 1.9                   | 1.6                   |
| Intermediate materials, supplies and components | 2    | 56.119  | 112.9    |                       | 2.8                   | 4.8                   |                       | 0.7                   | 1.2                   |
| Finished goods                                  | 3    | 27.471  | 101.5    |                       | -0.2                  | -0.7                  |                       | -0.3                  | -0.4                  |

The full publication of the Producer Price Index Malaysia, May 2021 can be downloaded from [eStatistik](#) portal.

**Released by:**

**DATO' SRI DR. MOHD UZIR MAHIDIN**  
**CHIEF STATISTICIAN MALAYSIA**  
**DEPARTMENT OF STATISTICS, MALAYSIA**

 [DrUzir\\_Mahidin](#)   [Dr\\_Uzir](#)

**#myHariBulan# #myBulan# #myTahun#**

**Contact person:**

Mohd Yusrizal Ab Razak  
Public Relation Officer  
Strategic Communication and International Division  
Department of Statistics, Malaysia  
Tel : +603-8885 7942  
Fax : +603-8888 9248  
E-mail : yusrizal.razak[at]dosm.gov.my

**Contact person:**

Baharudin Mohamad  
Public Relation Officer  
Strategic Communication and International Division  
Department of Statistics Malaysia  
Tel : +603-8090 4681  
Fax : +603-8888 9248  
Email : baharudin[at]dosm.gov.my

**Copyright ©2025 Department of Statistics Malaysia Official Portal. All Rights Reserved.**