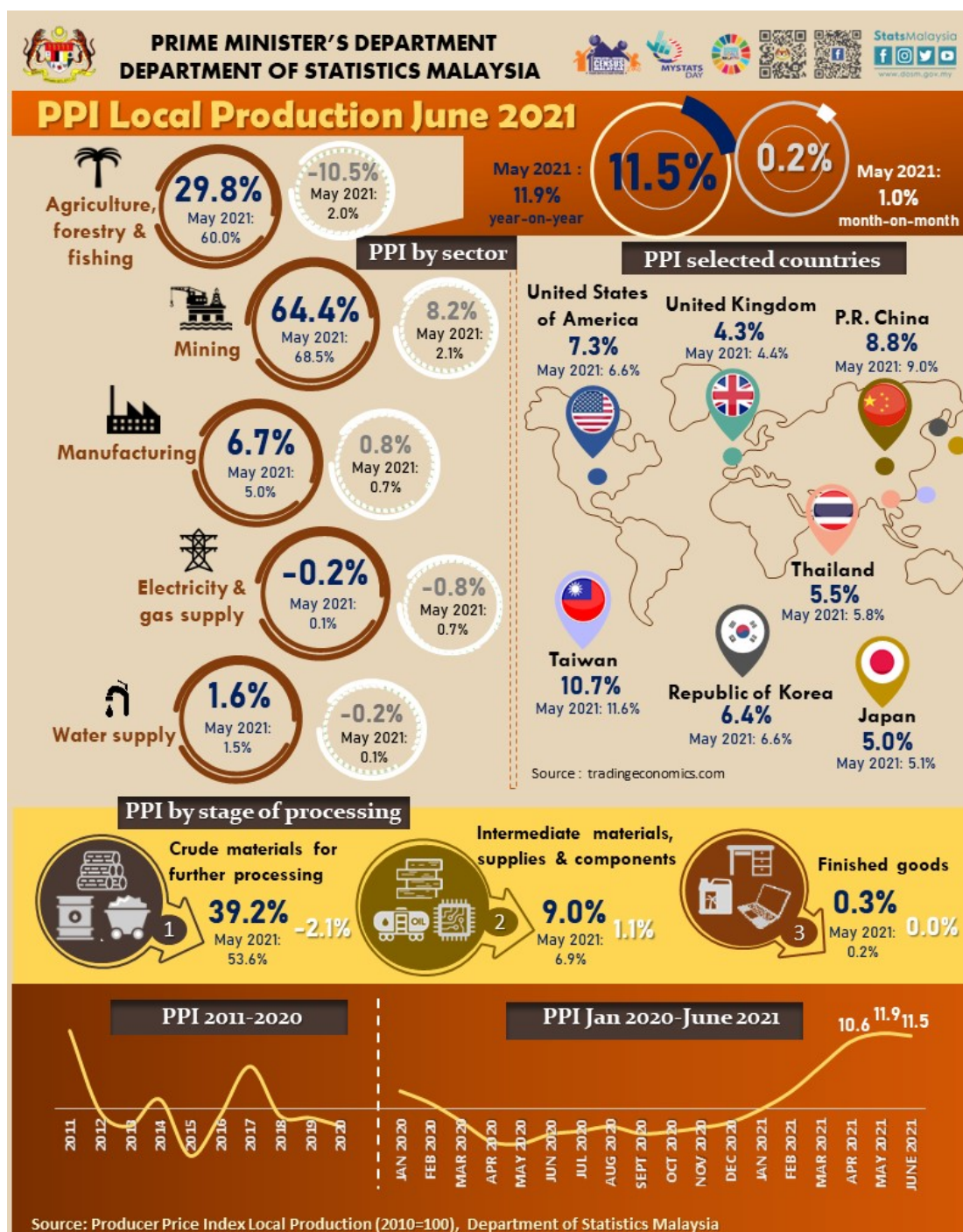




MINISTRY OF ECONOMY  
DEPARTMENT OF STATISTICS MALAYSIA

## PRODUCER PRICE INDEX MALAYSIA JUNE 2021



## PRODUCER PRICE INDEX (2010=100) BY SECTOR (MSIC 2008)

The PPI local production which measures costs for goods at the factory gate, increased 11.5 per cent year-on-year in June 2021, marking the fifth consecutive months it recorded an upward trend. The Mining index increased 64.4 per cent due to higher price in natural gas as well as continuous increase in crude petroleum. Index for Agriculture, forestry and fishing inclined at a slower pace of 29.8 per cent (May 2021: 60.0%) because of lower price in crude palm oil and livestock. In addition, the Manufacturing index, which was influenced by the rise in primary and construction-related commodities prices, also showed a significant increase (6.7%). In terms of utility indices, Water supply rose 1.6 per cent and Electricity & gas supply declined 0.2 per cent.

On a monthly basis, the PPI local production registered a marginal increase of 0.2 per cent in June 2021 as compared to 1.0 per cent in the previous month. The increase was supported by the index of Mining (8.2%) and Manufacturing (0.8%). Meanwhile, Agriculture, forestry & fishing, Electricity & gas supply and Water supply indices recorded a decline of 10.5 per cent, 0.8 per cent and 0.2 per cent respectively.

**Table 1 : Producer Price Index (2010=100) Local Production by Sector (MSIC 2008), Malaysia**

			Index	Percentage Change					
				Year-on-Year			Month-on-Month		
Sector	Code	Weight	June 2021	Apr 2021/ Apr 2020	May 2021/ May 2020	June 2021/ June 2020	Apr 2021/ Mar 2021	May 2021/ Apr 2021	June 2021/ May 2021
<b>Total</b>		<b>100.000</b>	<b>111.8</b>	<b>10.6</b>	<b>11.9</b>	<b>11.5</b>	<b>0.8</b>	<b>1.0</b>	<b>0.2</b>
Agriculture, forestry & fishing	A	6.730	134.3	49.8	60.0	29.8	2.8	2.0	-10.5
Mining	B	7.927	95.0	92.4	68.5	64.4	1.2	2.1	8.2
Manufacturing	C	81.571	111.5	3.5	5.0	6.7	0.5	0.7	0.8
Electricity & gas supply	D	3.442	116.9	-0.8	0.1	-0.2	0.3	0.7	-0.8
Water supply	E	0.330	112.3	1.2	1.5	1.6	0.6	0.1	-0.2

## PRODUCER PRICE INDEX FOR SECOND QUARTER 2021

The PPI local production for the second quarter of 2021 rose 11.3 per cent to 111.3 from 100.0 in the same quarter of the previous year. The increase was contributed by the index of Mining (74.0%), Agriculture, forestry & fishing (46.0%), Manufacturing (5.0%) and Water supply (1.4%). Meanwhile, Electricity & gas supply recorded a decline of 0.3 per cent. On a quarterly basis, the PPI local production rose 2.6 per cent as compared to 5.1 per cent in the first quarter of 2021.

**Table 2 : Average Index and Percentage Change of Quarterly PPI Local Production by Sector**

Sector	Weights	Index			% Change	
		Q2 2020	Q1 2021	Q2 2021	Q2 2021/ Q2 2020	Q2 2021/ Q1 2021
<b>Total</b>	<b>100.000</b>	<b>100.0</b>	<b>108.5</b>	<b>111.3</b>	<b>11.3</b>	<b>2.6</b>
Agriculture, forestry & fishing	6.730	98.5	140.0	143.8	46.0	2.7
Mining	7.927	51.5	81.3	89.6	74.0	10.2
Manufacturing	81.571	105.3	108.6	110.6	5.0	1.8
Electricity & gas supply	3.442	117.7	116.1	117.3	-0.3	1.0
Water supply	0.330	110.8	112.0	112.4	1.4	0.4

## PRODUCER PRICE INDEX BY STAGE OF PROCESSING

In June 2021, all stages of processing recorded an increase in price. The index of Crude materials for further processing increased 39.2 per cent as compared to 53.6 per cent recorded in the previous month. The index of Intermediate materials, supplies & components also increased 9.0 per cent. Similarly, the Finished goods index edged up 0.3 per cent.

On a monthly basis, the index of Intermediate materials, supplies & components increased 1.1 per cent. Meanwhile, Crude materials for further processing decreased 2.1 per cent and Finished goods remained unchanged.

**Table 3 : Producer Price Index (2010=100) Local Production by Stage of Processing**

			Index	Percentage Change					
				Year-on-Year			Month-on-Month		
Stage of Processing	Code	Weight	June 2021	Apr 2021/ Apr 2020	May 2021/ May 2020	June 2021/ June 2020	Apr 2021/ Mar 2021	May 2021/ Apr 2021	June 2021/ May 2021
Total		100.000	111.8	10.6	11.9	11.5	0.8	1.0	0.2
Crude materials for further processing	1	16.410	119.7	55.8	53.6	39.2	1.6	1.9	-2.1
Intermediate materials, supplies and components	2	56.119	114.1	4.8	6.9	9.0	1.2	0.9	1.1
Finished goods	3	27.471	101.5	-0.7	0.2	0.3	-0.4	0.4	0.0

The full publication of the Producer Price Index Malaysia, June 2021 can be downloaded from [eStatistik](#) portal.

**Released by:**

**DATO' SRI DR. MOHD UZIR MAHIDIN**  
**CHIEF STATISTICIAN MALAYSIA**  
**DEPARTMENT OF STATISTICS, MALAYSIA**

 [DrUzir\\_Mahidin](#)  [Dr\\_Uzir](#) 

**#myHariBulan# #myBulan# #myTahun#**

**Contact person:**

Mohd Yusrizal Ab Razak  
Public Relation Officer  
Strategic Communication and International Division  
Department of Statistics, Malaysia  
Tel : +603-8885 7942  
Fax : +603-8888 9248  
E-mail : yusrizal.razak[at]dosm.gov.my

**Contact person:**

Baharudin Mohamad  
Public Relation Officer  
Strategic Communication and International Division  
Department of Statistics Malaysia  
Tel : +603-8090 4681  
Fax : +603-8888 9248  
Email : baharudin[at]dosm.gov.my

**Copyright ©2026 Department of Statistics Malaysia Official Portal. All Rights Reserved.**