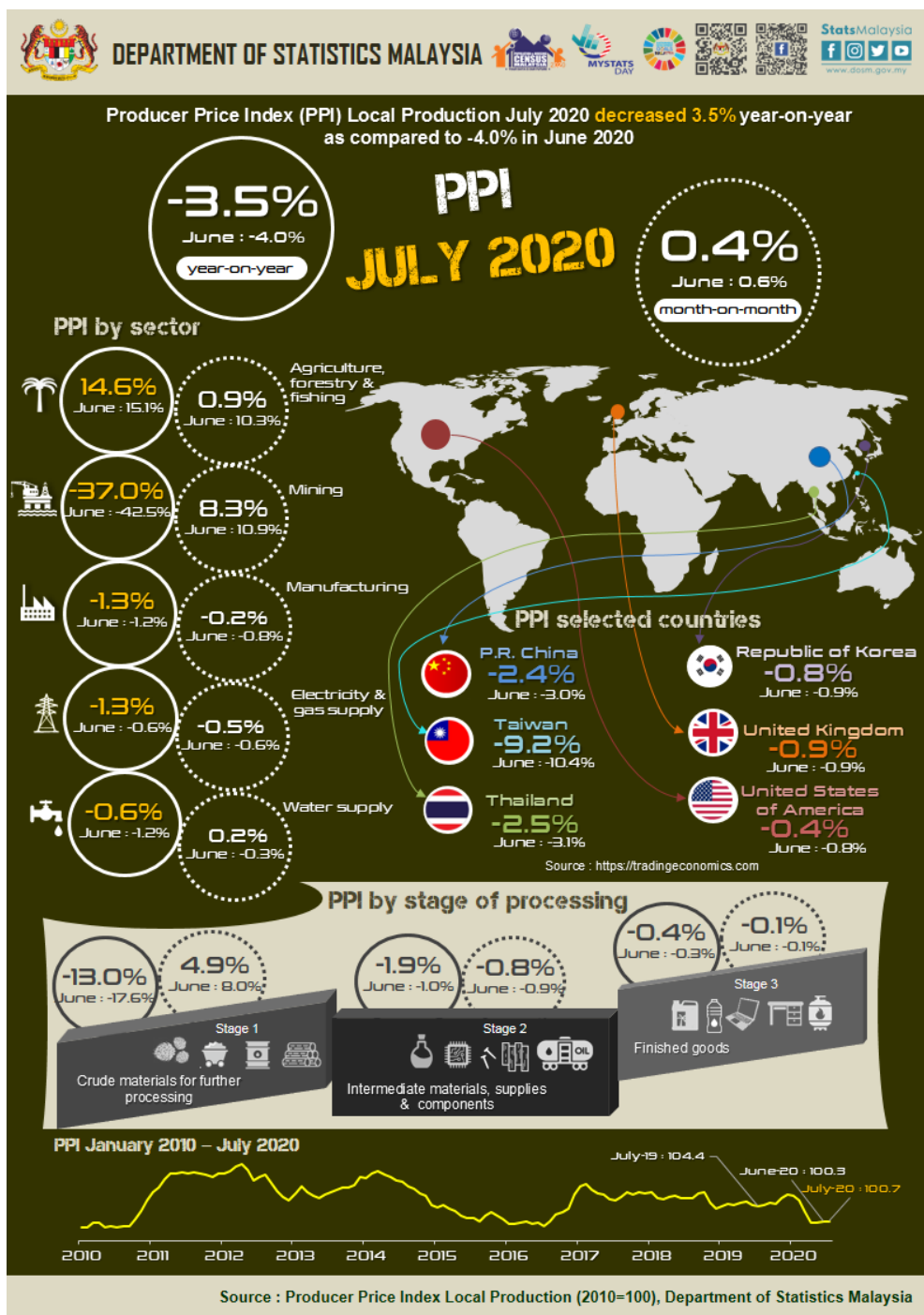




MINISTRY OF ECONOMY
DEPARTMENT OF STATISTICS MALAYSIA

PRODUCER PRICE INDEX MALAYSIA JULY 2020



PRODUCER PRICE INDEX (2010=100) BY SECTOR (MSIC 2008)

Producer Price Index (PPI) local production registered negative 3.5 per cent in July 2020 to 100.7 as against 104.4 in the same month of the preceding year. The decline of PPI local production in July 2020 was smaller than the decline in the previous two months. This is the effect of the lower oil prices that caused the Mining index to remain in the negative phase of 37.0 per cent. Similarly, the index of Manufacturing and Electricity & gas supply also recorded a decrease of 1.3 per cent respectively. Meanwhile, Water supply index fell 0.6 per cent. However, the index of Agriculture, forestry & fishing rose 14.6 per cent.

On a monthly basis, the PPI local production registered a marginal increase of 0.4 per cent in July 2020. The increase was supported by the index of Mining (8.3%), Agriculture, forestry & fishing (0.9%) and Water supply (0.2%). Conversely, Electricity & gas supply and Manufacturing indices recorded a decrease of 0.5 per cent and 0.2 per cent respectively.

Table 1 : Producer Price Index (2010=100) Local Production by Sector (MSIC 2008), Malaysia

			Index	Percentage Change					
				Year-on-Year			Month-on-Month		
Sector	Code	Weights	July 2020	May 2020/ May 2019	June 2020/ June 2019	July 2020/ July 2019	May 2020/ Apr 2020	June 2020/ May 2020	July 2020/ June 2020
Total		100.000	100.7	-5.5	-4.0	-3.5	-0.2	0.6	0.4
Agriculture, forestry & fishing	A	6.730	104.4	5.5	15.1	14.6	-4.5	10.3	0.9
Mining	B	7.927	62.6	-52.7	-42.5	-37.0	16.6	10.9	8.3
Manufacturing	C	81.571	104.3	-0.8	-1.2	-1.3	-0.8	-0.8	-0.2
Electricity & gas supply	D	3.442	116.5	-0.2	-0.6	-1.3	-0.3	-0.6	-0.5
Water supply	E	0.330	110.7	-1.1	-1.2	-0.6	-0.3	-0.3	0.2

PRODUCER PRICE INDEX BY STAGE OF PROCESSING

As compared with the same month a year ago, the PPI local production by stage of processing (SOP) declined 3.5 per cent in July 2020. It was led by the decline of all stage of processing; Crude materials for further processing (-13.0%), Intermediate materials, supplies & components (-1.9%) and Finished goods (-0.4%).

Based on month-on-month comparison, the increment of 0.4 per cent PPI local production by SOP in July 2020 was supported by the increase in the index of Crude materials for further processing (4.9%). However, the index of Intermediate materials, supplies & components and Finished goods showed a decrease of 0.8 per cent and 0.1 per cent respectively.

Table 2 : Producer Price Index (2010=100), Local Production by Stage of Processing

			Index	Percentage Change					
				Year-on-Year			Month-on-Month		
Stage of Processing	Code	Weights	July 2020	May 2020/ May 2019	June 2020/ June 2019	July 2020/ July 2019	May 2020/ Apr 2020	June 2020/ May 2020	July 2020/ June 2020
Total		100.000	100.7	-5.5	-4.0	-3.5	-0.2	0.6	0.4
Crude materials for further processing	1	16.410	90.2	-26.6	-17.6	-13.0	3.4	8.0	4.9
Intermediate materials, supplies and components	2	56.119	103.9	-0.9	-1.0	-1.9	-1.1	-0.9	-0.8
Finished goods	3	27.471	101.1	0.2	-0.3	-0.4	-0.5	-0.1	-0.1

Released by:

DATO' SRI DR. MOHD UZIR MAHIDIN
CHIEF STATISTICIAN MALAYSIA
DEPARTMENT OF STATISTICS, MALAYSIA

 [DrUzir_Mahidin](#)  [Dr_Uzir](#) 

#myHariBulan# #myBulan# #myTahun#

Contact person:

Mohd Yusrizal Ab Razak
 Public Relation Officer
 Strategic Communication and International Division
 Department of Statistics, Malaysia
 Tel : +603-8885 7942
 Fax : +603-8888 9248
 Email : yusrizal.razak[at]dosm.gov.my

Contact person:

Baharudin Mohamad
Public Relation Officer
Strategic Communication and International Division
Department of Statistics Malaysia
Tel : +603-8090 4681
Fax : +603-8888 9248
Email : baharudin[at]dosm.gov.my

Copyright ©2026 Department of Statistics Malaysia Official Portal. All Rights Reserved.