



MINISTRY OF ECONOMY  
DEPARTMENT OF STATISTICS MALAYSIA

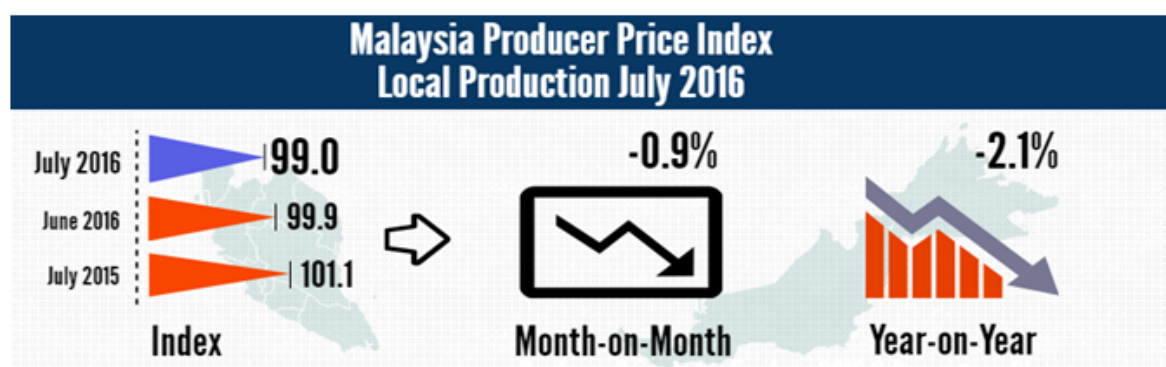
---

## PRODUCER PRICE INDEX MALAYSIA JULY 2016

---

### Local Production

The Producer Price Index (PPI) for local production measures the average change in the prices of commodities charged by domestic producers of an industry in a reference month compared with the base year.

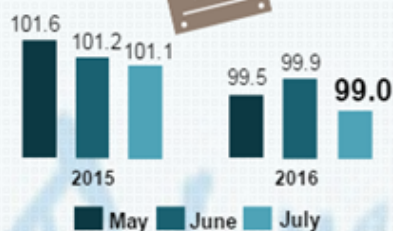


### Producer Price Index (2010=100) By Sector (MSIC 2008)

Year-on-year comparison showed that the PPI for local production fell 2.1 per cent in July 2016. The highest drop was recorded by Mining index (-17.5%), followed by Manufacturing (-2.0%). Meanwhile, the index for Agriculture, forestry & fishing, Water supply and Electricity & gas showed an increase of 10.7 per cent, 2.9 per cent and 0.6 per cent respectively. [Table I].

The PPI for local production declined by 0.9 per cent in July 2016 as compared to June 2016. This was due to decreases in all sectors namely, Mining (-8.5%), Agriculture, forestry & fishing (-2.8%), Water supply (-1.0%), Electricity & gas (-0.3%) and Manufacturing (-0.1%).

## Producer Price Index & Percentage Change, July 2016 :



Month-on-Month

Year-on-Year

-0.9%

-2.1%

  
Agriculture,  
forestry & fishing

-2.8%

+10.7%

  
Mining


-8.5%

-17.5%

  
Manufacturing


-0.1%

-2.0%

  
Electricity & gas <sup>(1)</sup>

-0.3%

+0.6%

  
Water supply <sup>(1)</sup>

-1.0%

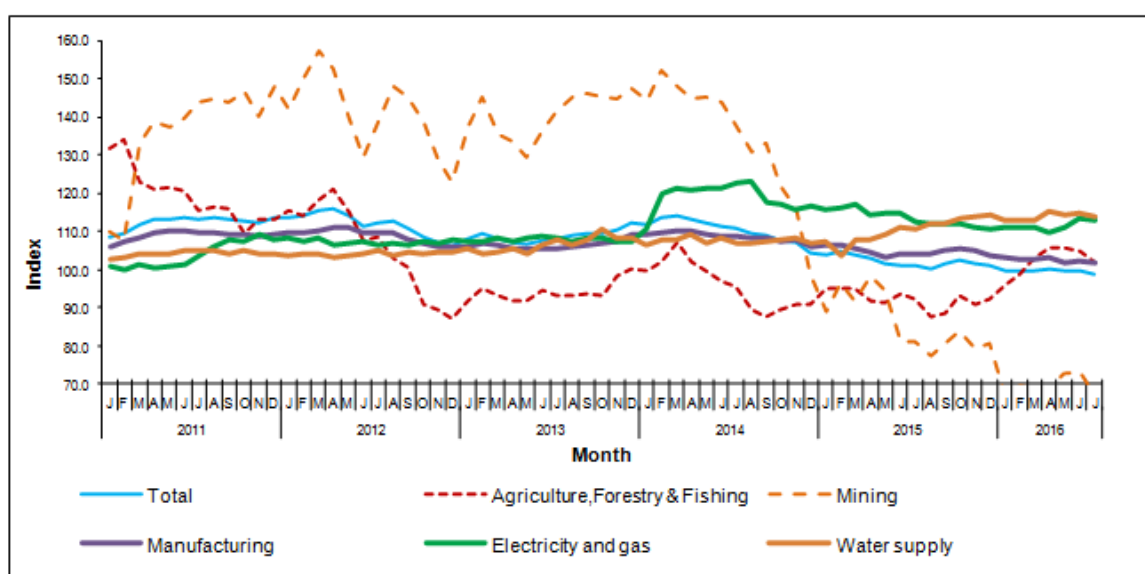
+2.9%

Note: <sup>(1)</sup> Prices used in constructing the index is refer to net transaction prices by producers receive for sales of their outputs.

**Table I : Producer Price Index (2010=100) Local Production By Sector (MSIC 2008), Malaysia**

Sector	Code	Weight	Index	Percentage Change Month on Month			Percentage Change Year on Year		
				July 2016	May 2016 / Apr. 2016	June 2016 / May 2016	July 2016 / June 2016	May 2016/ May 2015	June 2016 / June 2015
Total		100.00	99.0	-0.7	0.4	-0.9	-2.1	-1.3	-2.1
Agriculture, Forestry & Fishing	A	8.15	102.0	0.1	-0.9	-2.8	15.9	12.0	10.7
Mining	B	9.67	67.0	5.4	0.5	-8.5	-23.1	-9.6	-17.5
Manufacturing	C	78.79	102.0	-1.3	0.4	-0.1	-1.3	-1.7	-2.0
Electricity & gas	D	3.05	113.0	0.9	2.2	-0.3	-3.6	-1.1	0.6
Water supply	E	0.34	113.8	-0.9	0.6	-1.0	4.7	3.4	2.9

**Chart I : Producer Price Index (2010=100) Local Production By Sector, 2011-2016**



## Producer Price Index By Stage of Processing

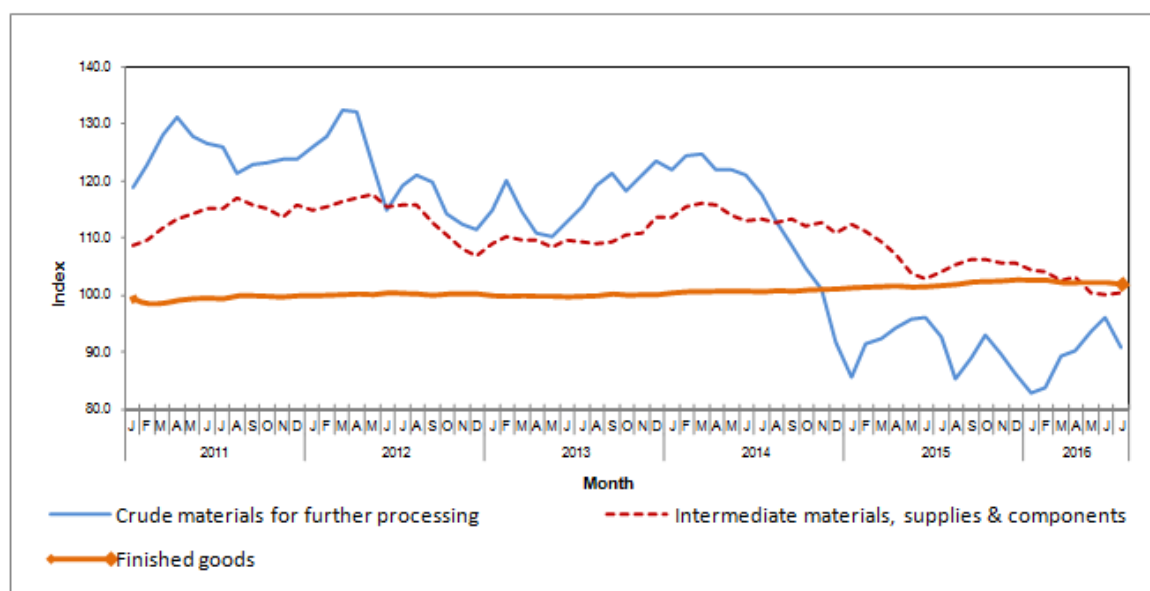
The PPI for local production by stage of processing (SOP) declined by 0.9 per cent in July 2016 compared to the previous month. This declination was due to a decrease in Crude materials for further processing (-5.6%) and Finished goods (-0.3%). Meanwhile, Intermediate materials, supplies and components increased (+0.4%). [Table II]

As compared with the same month a year ago, the PPI for local production by SOP for July 2016 dropped by 2.1 per cent. This was due to decreases in index for Intermediate materials, supplies and components (-3.4%) and Crude materials for further processing (-2.0%). However, index for Finished goods increased by 0.2 per cent.

**Table II : Producer Price Index (2010=100), Local Production By Stage of Processing**

Stage Of Processing	Code	Weight	Index	Percentage Change Month on Month			Percentage Change Year on Year		
			July 2016	May 2016 / Apr. 2016	June 2016 / May 2016	July 2016 / June 2016	May 2016/ May 2015	June 2016 / June 2015	July 2016 / July 2015
Total		100.00	99.0	-0.7	0.4	-0.9	-2.1	-1.3	-2.1
Crude materials for further processing	1	20.32	90.8	4.0	2.7	-5.6	-2.2	0.2	-2.0
Intermediate materials, supplies and components	2	53.56	100.5	-2.5	-0.3	0.4	-3.4	-2.7	-3.4
Finished goods	3	26.12	102.1	0.0	0.0	-0.3	0.8	0.7	0.2

**Chart II : Producer Price Index (2010=100), Local Production By Stage of Processing, 2011-2016**



**RELEASED BY:**

**THE OFFICE OF CHIEF STATISTICIAN MALAYSIA  
DEPARTMENT OF STATISTICS MALAYSIA**

**30 AUGUST 2016**

**Contact person:**

Ho Mei Kei  
Public Relation Officer  
Corporate and User Services Division  
Department of Statistics, Malaysia  
Tel : +603-8885 7942  
Fax : +603-8888 9248  
Email : mkho[at]stats.gov.my

**Contact person:**

Baharudin Mohamad  
Public Relation Officer  
Strategic Communication and International Division  
Department of Statistics Malaysia  
Tel : +603-8090 4681  
Fax : +603-8888 9248  
Email : baharudin[at]dosm.gov.my

**Copyright ©2026 Department of Statistics Malaysia Official Portal. All Rights Reserved.**