



MINISTRY OF ECONOMY  
DEPARTMENT OF STATISTICS MALAYSIA

---

## PRODUCER PRICE INDEX MALAYSIA JANUARY 2016

---

### Local Production

The Producer Price Index (PPI) for local production measures the average change in the prices of commodities charged by domestic producers of an industry in a reference month compared with the base year.

#### Producer Price Index (2010=100) By Sector (MSIC 2008)

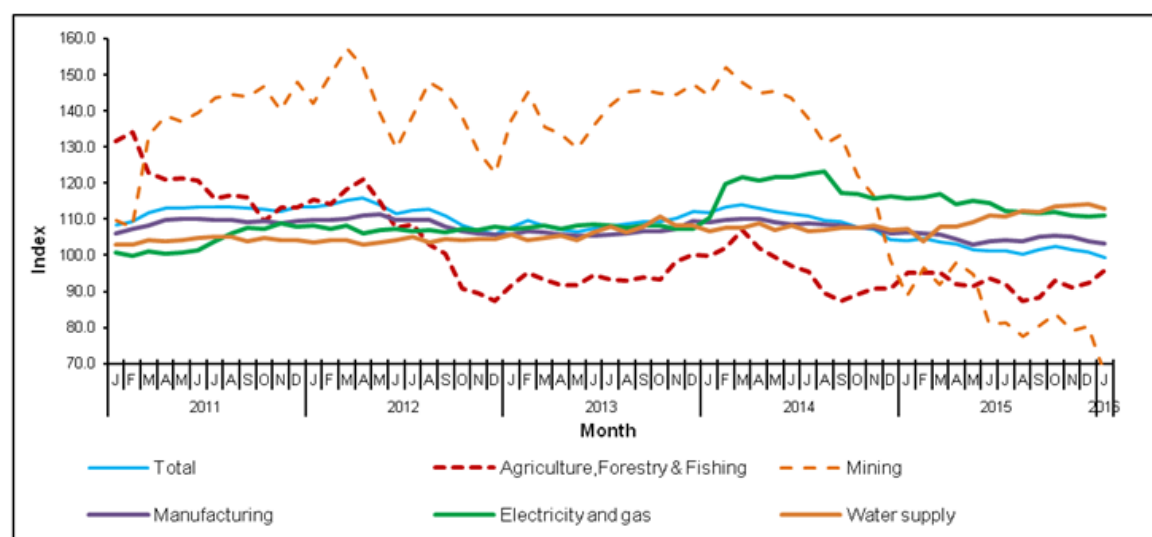
Year-on-year comparison showed that the PPI for local production fell 4.4 per cent in January 2016. The highest drop was recorded by Mining index (-24.7%), followed by Electricity & gas (-4.1%) and Manufacturing (-2.8%). Meanwhile, the index for Water supply and Agriculture, forestry & fishing showed an increase of 5.2 per cent and 0.6 per cent respectively. [Table I].

The PPI for local production declined by 1.4 per cent in January 2016 as compared to December 2015. This was due to decreases in Mining (-16.9%), Water supply (-1.0%) and Manufacturing (-0.4%). Meanwhile, the index for Agriculture, forestry & fishing and Electricity & gas increased by 3.6 per cent and 0.2 percent respectively.

**Table I : Producer Price Index (2010=100) Local Production By Sector (MSIC 2008), Malaysia**

| Sector                          | Code | Weight | Index | Percentage Change<br>Month on Month |                                |                                | Percentage Change<br>Year on Year |                               |                               |
|---------------------------------|------|--------|-------|-------------------------------------|--------------------------------|--------------------------------|-----------------------------------|-------------------------------|-------------------------------|
|                                 |      |        |       | Jan.<br>2016                        | Nov.<br>2015 /<br>Oct.<br>2015 | Dec.<br>2015 /<br>Nov.<br>2015 | Jan.<br>2016 /<br>Dec.<br>2015    | Nov.<br>2015/<br>Nov.<br>2014 | Dec.<br>2015/<br>Dec.<br>2014 |
| Total                           |      | 100.00 | 99.5  | -1.0                                | -0.7                           | -1.4                           | -5.3                              | -3.4                          | -4.4                          |
| Agriculture, Forestry & Fishing | A    | 8.15   | 95.8  | -2.3                                | 1.6                            | 3.6                            | 0.2                               | 1.8                           | 0.6                           |
| Mining                          | B    | 9.67   | 66.9  | -5.6                                | 1.8                            | -16.9                          | -31.9                             | -18.4                         | -24.7                         |
| Manufacturing                   | C    | 78.79  | 103.4 | -0.3                                | -1.2                           | -0.4                           | -2.3                              | -2.2                          | -2.8                          |
| Electricity & gas               | D    | 3.05   | 111.0 | -0.9                                | -0.1                           | 0.2                            | -4.1                              | -4.9                          | -4.1                          |
| Water supply                    | E    | 0.34   | 113.0 | 0.3                                 | 0.3                            | -1.0                           | 5.1                               | 6.5                           | 5.2                           |

**Chart I : Producer Price Index (2010=100) Local Production By Sector, 2011-2016**



### Producer Price Index By Stage of Processing

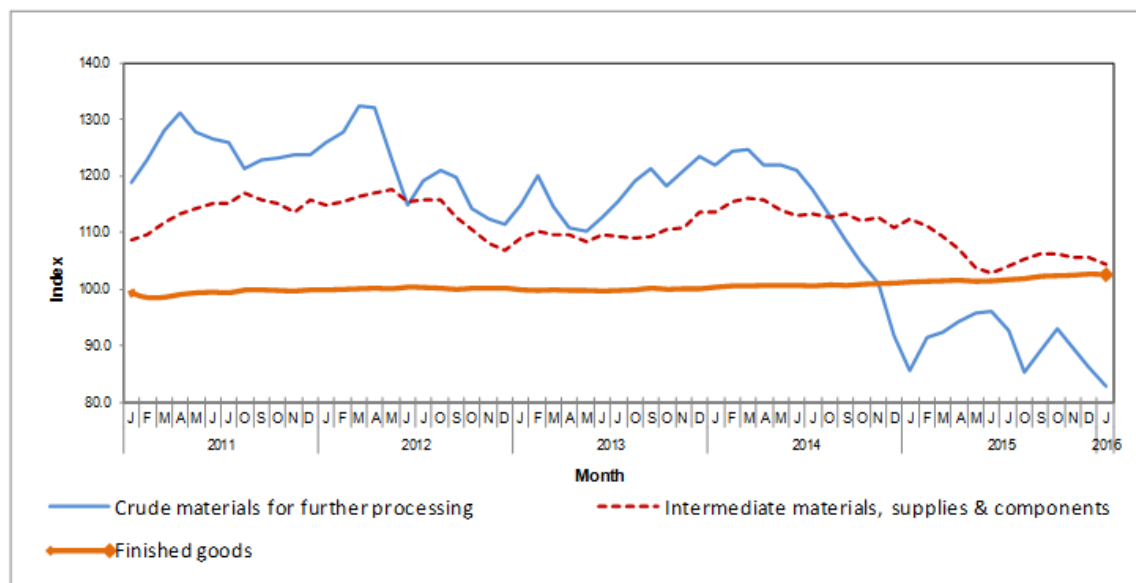
The PPI for local production by stage of processing (SOP) declined by 1.4 per cent in January 2016 compared to the previous month. This declination was due to decreases in all three stages of processing that is Crude materials for further processing (-3.9%), Intermediate materials, supplies and components (-1.1%) and Finished goods (-0.1%). [Table II].

As compared with the same month a year ago, the PPI for local production by SOP for January 2016 dropped by 4.4 per cent. This was due to decreases in index for Intermediate materials, supplies and components (-7.2%) followed by index for Crude materials for further processing (-3.3%). However, index for Finished goods increased by 1.3 per cent.

**Table II : Producer Price Index (2010=100), Local Production By Stage of Processing**

| Stage Of Processing                                    | Code     | Weight        | Index       | Percentage Change Month on Month |                       |                       | Percentage Change Year on Year |                       |                       |
|--------------------------------------------------------|----------|---------------|-------------|----------------------------------|-----------------------|-----------------------|--------------------------------|-----------------------|-----------------------|
|                                                        |          |               | Jan. 2016   | Nov. 2015 / Oct. 2015            | Dec. 2015 / Nov. 2015 | Jan. 2016 / Dec. 2015 | Nov. 2015 / Nov. 2014          | Dec. 2015 / Dec. 2014 | Jan. 2016 / Jan. 2015 |
| <b>Total</b>                                           |          | <b>100.00</b> | <b>99.5</b> | <b>-1.0</b>                      | <b>-0.7</b>           | <b>-1.4</b>           | <b>-5.3</b>                    | <b>-3.4</b>           | <b>-4.4</b>           |
| <b>Crude materials for further processing</b>          | <b>1</b> | 20.32         | 82.7        | -3.7                             | -4.0                  | -3.9                  | -11.1                          | -6.0                  | -3.3                  |
| <b>Intermediate materials, supplies and components</b> | <b>2</b> | 53.56         | 104.3       | -0.6                             | -0.1                  | -1.1                  | -6.4                           | -4.9                  | -7.2                  |
| <b>Finished goods</b>                                  | <b>3</b> | 26.12         | 102.8       | 0.1                              | 0.2                   | -0.1                  | 1.5                            | 1.6                   | 1.3                   |

**Chart II : Producer Price Index (2010=100), Local Production By Stage of Processing, 2011-2016**



**RELEASED BY:**

**THE OFFICE OF CHIEF STATISTICIAN MALAYSIA**

**DEPARTMENT OF STATISTICS MALAYSIA**

**29 FEBRUARY 2016**

Contact person:

Ho Mei Kei

Public Relation Officer

Corporate and User Services Division

Department of Statistics, Malaysia

Tel : +603-8885 7942

Fax : +603-8888 9248

Email : mkho@stats.gov.my

**Contact person:**

Baharudin Mohamad

Public Relation Officer

Strategic Communication and International Division

Department of Statistics Malaysia

Tel : +603-8090 4681

Fax : +603-8888 9248

Email : baharudin[at]dosm.gov.my

**Copyright ©2026 Department of Statistics Malaysia Official Portal. All Rights Reserved.**