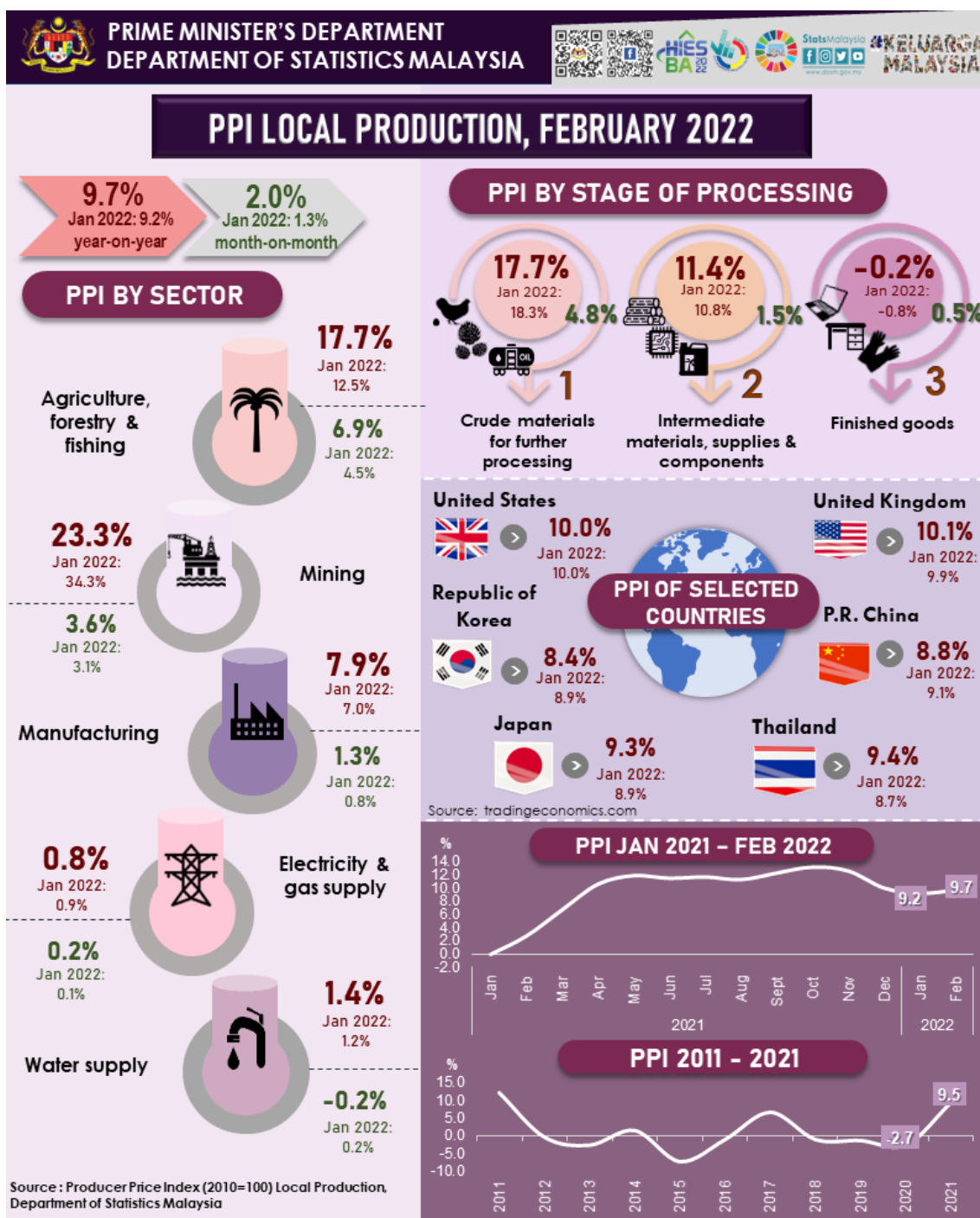




MINISTRY OF ECONOMY  
DEPARTMENT OF STATISTICS MALAYSIA

## PRODUCER PRICE INDEX MALAYSIA FEBRUARY 2022



## PRODUCER PRICE INDEX (2010=100) BY SECTOR (MSIC 2008)

The Producer Price Index (PPI) local production which measures the costs of goods at factory gate posted an increase of 9.7 per cent in February 2022 as opposed to a 9.2 per cent increase registered in January 2022. The increase was driven by Mining index that rose 23.3 per cent as opposed to 34.3 per cent recorded in January 2022. The index of Agriculture, forestry & fishing registered a higher increase of 17.7 per cent (January 2022: 12.5%) mainly led by the indices of Growing of perennial crops (23.3%), Fishing (9.4%) and Animal production (4.8%). Similarly, Manufacturing index increased 7.9 per cent as compared to 7.0 per cent recorded in January 2022, supported by an increase in the indices of subsectors namely Manufacture of refined petroleum products (20.3%), Manufacture of vegetable & animal oils & fats (18.6%) and Manufacture of basic chemicals, fertilizers & nitrogen compounds, plastics & synthetic rubber in primary forms (13.1%). In addition, the indices of Water supply and Electricity & gas supply increased 1.4 per cent and 0.8 per cent respectively.

In terms of month-on-month comparison, the PPI local production increased 2.0 per cent as opposed to 1.3 per cent recorded in the previous month. The increase was driven by a 6.9 per cent increase in Agriculture, forestry & fishing index (January 2022: 4.5%), where it was underpinned by higher price of Oil palm fresh fruit bunches. Meanwhile, prices of Crude oil and Natural gas continued to rise in February 2022, which led to a 3.6 per cent increase in Mining index. Manufacturing index also increased 1.3 per cent (January 2022: 0.8%), contributed by the indices of subsectors Manufacture of vegetable & animal oils & fats (3.2%), Manufacture of refined petroleum products (2.1%) and Manufacture of electronic components & boards (0.5%). In addition, Electricity & gas supply index edged up 0.2 per cent, while, Water supply index declined 0.2 per cent.

**Table 1 : Producer Price Index (PPI) Local Production by Sector, Malaysia**

Sector	Weight	Index	Percentage Change (%)					
			Year-on-Year			Month-on-Month		
		Feb 2022	Feb 2021	Jan 2022	Feb 2022	Feb 2021	Jan 2022	Feb 2022
<b>Total</b>	<b>100.00</b>	<b>119.4</b>	<b>2.7</b>	<b>9.2</b>	<b>9.7</b>	<b>1.5</b>	<b>1.3</b>	<b>2.0</b>
<b>Agriculture, forestry &amp; fishing</b>	<b>6.73</b>	<b>164.6</b>	<b>35.0</b>	<b>12.5</b>	<b>17.7</b>	<b>2.2</b>	<b>4.5</b>	<b>6.9</b>
<b>Mining</b>	<b>7.93</b>	<b>103.8</b>	<b>-11.0</b>	<b>34.3</b>	<b>23.3</b>	<b>12.9</b>	<b>3.1</b>	<b>3.6</b>
<b>Manufacturing</b>	<b>81.57</b>	<b>117.2</b>	<b>1.5</b>	<b>7.0</b>	<b>7.9</b>	<b>0.5</b>	<b>0.8</b>	<b>1.3</b>
<b>Electricity &amp; gas supply</b>	<b>3.44</b>	<b>116.8</b>	<b>-1.9</b>	<b>0.9</b>	<b>0.8</b>	<b>0.3</b>	<b>0.1</b>	<b>0.2</b>
<b>Water supply</b>	<b>0.33</b>	<b>113.5</b>	<b>0.8</b>	<b>1.2</b>	<b>1.4</b>	<b>-0.4</b>	<b>0.2</b>	<b>-0.2</b>

## PRODUCER PRICE INDEX BY STAGE OF PROCESSING

The index of Crude materials for further processing increased 17.7 per cent in February 2022, supported by the indices of Non-food materials and Foodstuffs & feedstuffs which increased by 20.4 per cent and 3.7 per cent respectively. Similarly, the index of Intermediate materials, supplies & components continued to register a double-digit increase of 11.4 per cent in February 2022 (January 2022: 10.8%) driven by an increase in the indices of Processed fuel & lubricants (18.4%) and Materials & components for manufacturing (11.8%). However, Finished goods index decreased 0.2 per cent due to a decrease in the index of Capital equipment (-1.8%).

For a monthly comparison, the index of Crude materials for further processing increased 4.8 per cent as compared to 3.4 per cent recorded in January 2022. The index of Intermediate materials, supplies & components increased marginally by 1.5 per cent, while Finished goods index increased 0.5 per cent.

**Table 2: Producer Price Index (PPI) Local Production by Stage of Processing, Malaysia**

Stage of Processing	Weight	Index	Percentage Change (%)					
			Year-on-Year			Month-on-Month		
		Feb 2022	Feb 2021	Jan 2022	Feb 2022	Feb 2021	Jan 2022	Feb 2022
<b>Total</b>	<b>100.00</b>	<b>119.4</b>	<b>2.7</b>	<b>9.2</b>	<b>9.7</b>	<b>1.5</b>	<b>1.3</b>	<b>2.0</b>
Crude materials for further processing	16.41	136.4	10.0	18.3	17.7	5.4	3.4	4.8
Intermediate materials, supplies and components	56.12	122.3	1.5	10.8	11.4	0.9	1.1	1.5
Finished goods	27.47	101.6	0.4	-0.8	-0.2	-0.1	0.0	0.5

The full publication of the Producer Price Index Malaysia, February 2022 can be downloaded from [eStatistik](#) portal.

**Released by:**

**THE OFFICE OF CHIEF STATISTICIAN MALAYSIA  
DEPARTMENT OF STATISTICS, MALAYSIA**

**29th MARCH 2022**

**Contact person:**

Mohd Yusrizal Ab Razak  
Public Relation Officer  
Strategic Communication and International Division  
Department of Statistics, Malaysia  
Tel : +603-8885 7942  
Fax : +603-8888 9248  
E-mail : yusrizal.razak[at]dosm.gov.my

**Contact person:**

Baharudin Mohamad  
Public Relation Officer  
Strategic Communication and International Division  
Department of Statistics Malaysia  
Tel : +603-8090 4681  
Fax : +603-8888 9248  
Email : baharudin[at]dosm.gov.my

**Copyright ©2026 Department of Statistics Malaysia Official Portal. All Rights Reserved.**