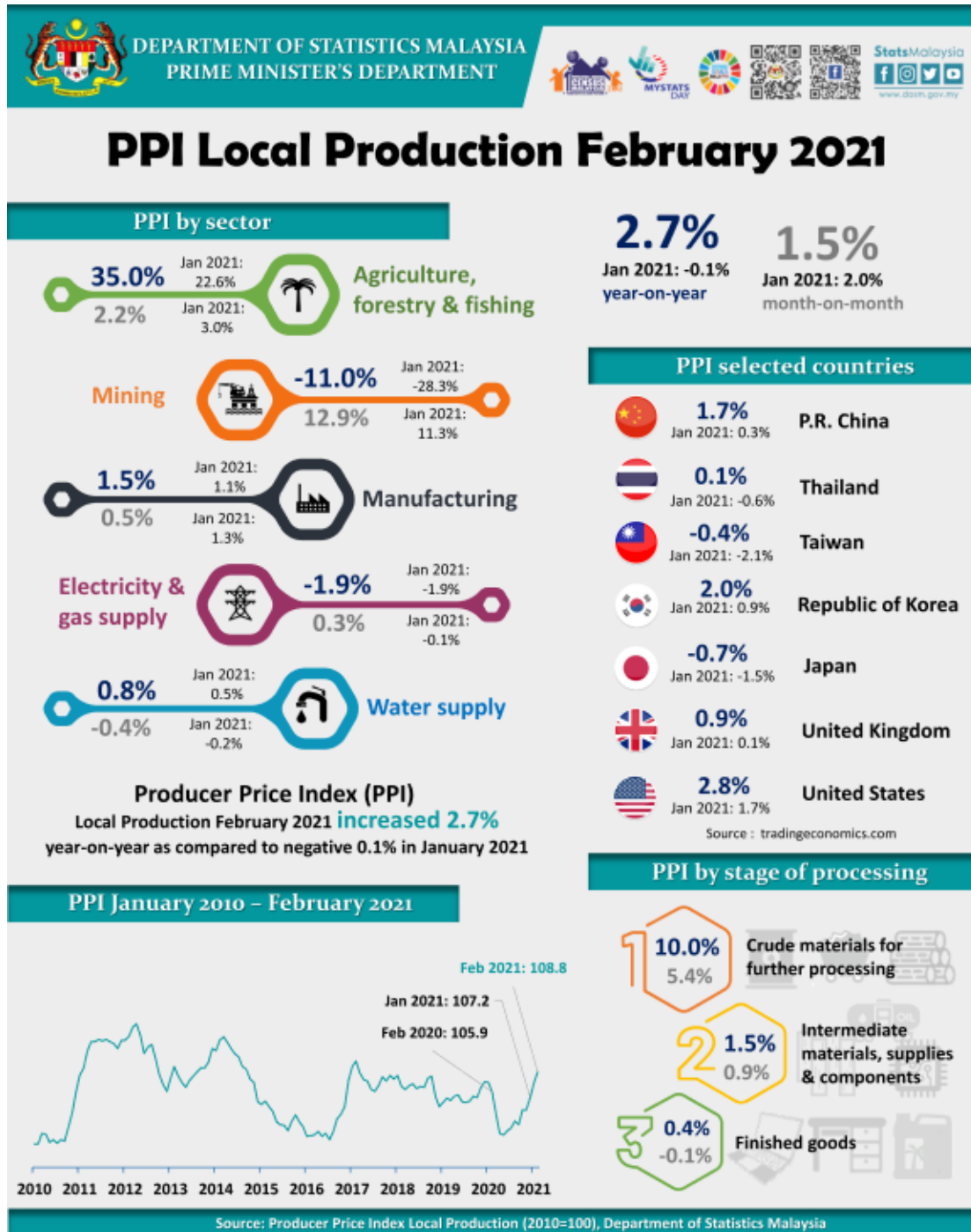




MINISTRY OF ECONOMY  
DEPARTMENT OF STATISTICS MALAYSIA

## PRODUCER PRICE INDEX MALAYSIA FEBRUARY 2021



## PRODUCER PRICE INDEX (2010=100) BY SECTOR (MSIC 2008)

Producer Price Index (PPI) local production recorded an increase of 2.7 per cent in February 2021 as compared to negative 0.1 per cent in January 2021. This is the first positive shift after experiencing a negative growth for 11 consecutive months since March 2020. Index of Agriculture, forestry & fishing continued to increase 35.0 per cent as compared to 22.6 per cent in the previous month. Index of Manufacturing and Water supply increased 1.5 per cent and 0.8 per cent respectively. Meanwhile, the index of Mining recorded a negative change of 11.0 per cent, improved from negative 28.3 per cent in January 2021. However, the index of Electricity & gas supply recorded a decrease of 1.9 per cent, similar to the previous month.

On a monthly basis, the PPI local production showed an increase of 1.5 per cent in February 2021 lower than 2.0 per cent recorded in previous month. Manufacturing and Agriculture, forestry & fishing sector increased with a slower growth of 0.5 per cent (January 2021: 1.3%) and 2.2 per cent (January 2021: 3.0%) respectively. However, Mining sector recorded a higher growth of 12.9 per cent as compared to 11.3 per cent recorded a month ago. Electricity & gas supply also recorded a positive growth of 0.3 per cent (January 2021: -0.1%). Meanwhile, the index of Water supply decreased 0.4 per cent.

**Table 1 : Producer Price Index (2010=100) Local Production by Sector (MSIC 2008), Malaysia**

|                                 |      |                | Index        | Percentage Change     |                       |                       |                       |                       |                       |
|---------------------------------|------|----------------|--------------|-----------------------|-----------------------|-----------------------|-----------------------|-----------------------|-----------------------|
|                                 |      |                |              | Year-on-Year          |                       |                       | Month-on-Month        |                       |                       |
| Sector                          | Code | Weight         | Feb 2021     | Dec 2020/<br>Dec 2019 | Jan 2021/<br>Jan 2020 | Feb 2021/<br>Feb 2020 | Dec 2020/<br>Nov 2020 | Jan 2021/<br>Dec 2020 | Feb 2021/<br>Jan 2021 |
| <b>Total</b>                    |      | <b>100.000</b> | <b>108.8</b> | <b>-2.1</b>           | <b>-0.1</b>           | <b>2.7</b>            | <b>1.7</b>            | <b>2.0</b>            | <b>1.5</b>            |
| Agriculture, forestry & fishing | A    | 6.730          | 139.9        | 23.5                  | 22.6                  | 35.0                  | 4.2                   | 3.0                   | 2.2                   |
| Mining                          | B    | 7.927          | 84.2         | -40.0                 | -28.3                 | -11.0                 | 13.0                  | 11.3                  | 12.9                  |
| Manufacturing                   | C    | 81.571         | 108.6        | 0.2                   | 1.1                   | 1.5                   | 0.9                   | 1.3                   | 0.5                   |
| Electricity & gas supply        | D    | 3.442          | 115.9        | -1.7                  | -1.9                  | -1.9                  | -0.9                  | -0.1                  | 0.3                   |
| Water supply                    | E    | 0.330          | 111.9        | 0.7                   | 0.5                   | 0.8                   | -0.2                  | -0.2                  | -0.4                  |

## PRODUCER PRICE INDEX BY STAGE OF PROCESSING

All stages of processing recorded an increase in February 2021. A higher increase was recorded by Crude materials for further processing with a growth of 10.0 per cent (January 2021: -3.4%). Concurrently, the index of Intermediate materials, supplies & components and Finished goods increased 1.5 per cent and 0.4 per cent respectively.

On a monthly basis, the index of Crude materials for further processing rose by 5.4 per cent, a smaller shift as compared to previous month (January 2021: 6.2%). This is followed by the index of Intermediate materials, supplies & components with an increase of 0.9 per cent (January 2021: 1.2%). However, the index of Finished goods decreased 0.1 per cent.

**Table 2 : Producer Price Index (2010=100), Local Production by Stage of Processing**

| Stage of Processing                             | Code | Weight         | Index        |                       |                       |                       |                       |                       |                       |
|---|------|----------------|--------------|-----------------------|-----------------------|-----------------------|-----------------------|-----------------------|-----------------------|
|   |      |                | Feb 2021     | Year-on-Year          |                       |                       | Percentage Change     |                       |                       |
|   |      |                |              | Dec 2020/<br>Dec 2019 | Jan 2021/<br>Jan 2020 | Feb 2021/<br>Feb 2020 | Dec 2020/<br>Nov 2020 | Jan 2021/<br>Dec 2020 | Feb 2021/<br>Jan 2020 |
| <b>Total</b>                                    |      | <b>100.000</b> | <b>108.8</b> | <b>-2.1</b>           | <b>-0.1</b>           | <b>2.7</b>            | <b>1.7</b>            | <b>2.0</b>            | <b>1.5</b>            |
| Crude materials for further processing          | 1    | 16.410         | 115.9        | -10.0                 | -3.4                  | 10.0                  | 6.3                   | 6.2                   | 5.4                   |
| Intermediate materials, supplies and components | 2    | 56.119         | 109.8        | 0.3                   | 1.1                   | 1.5                   | 1.3                   | 1.2                   | 0.9                   |
| Finished goods                                  | 3    | 27.471         | 101.8        | -0.8                  | 0.1                   | 0.4                   | -0.1                  | 0.6                   | -0.1                  |

The full publication of the Producer Price Index Malaysia, February 2021 can be downloaded from [eStatistik](#) portal.

### Released by:

**DATO' SRI DR. MOHD UZIR MAHIDIN**  
**CHIEF STATISTICIAN MALAYSIA**  
**DEPARTMENT OF STATISTICS, MALAYSIA**

 [DrUzir\\_Mahidin](#)   [Dr\\_Uzir](#)

**#myHariBulan# #myBulan# #myTahun#**

### Contact person:

Mohd Yusrizal Ab Razak  
 Public Relation Officer  
 Strategic Communication and International Division  
 Department of Statistics, Malaysia  
 Tel : +603-8885 7942  
 Fax : +603-8888 9248

E-mail : yusrizal.razak[at]dosm.gov.my

**Contact person:**

Baharudin Mohamad

Public Relation Officer

Strategic Communication and International Division

Department of Statistics Malaysia

Tel : +603-8090 4681

Fax : +603-8888 9248

Email : baharudin[at]dosm.gov.my

**Copyright ©2026 Department of Statistics Malaysia Official Portal. All Rights Reserved.**