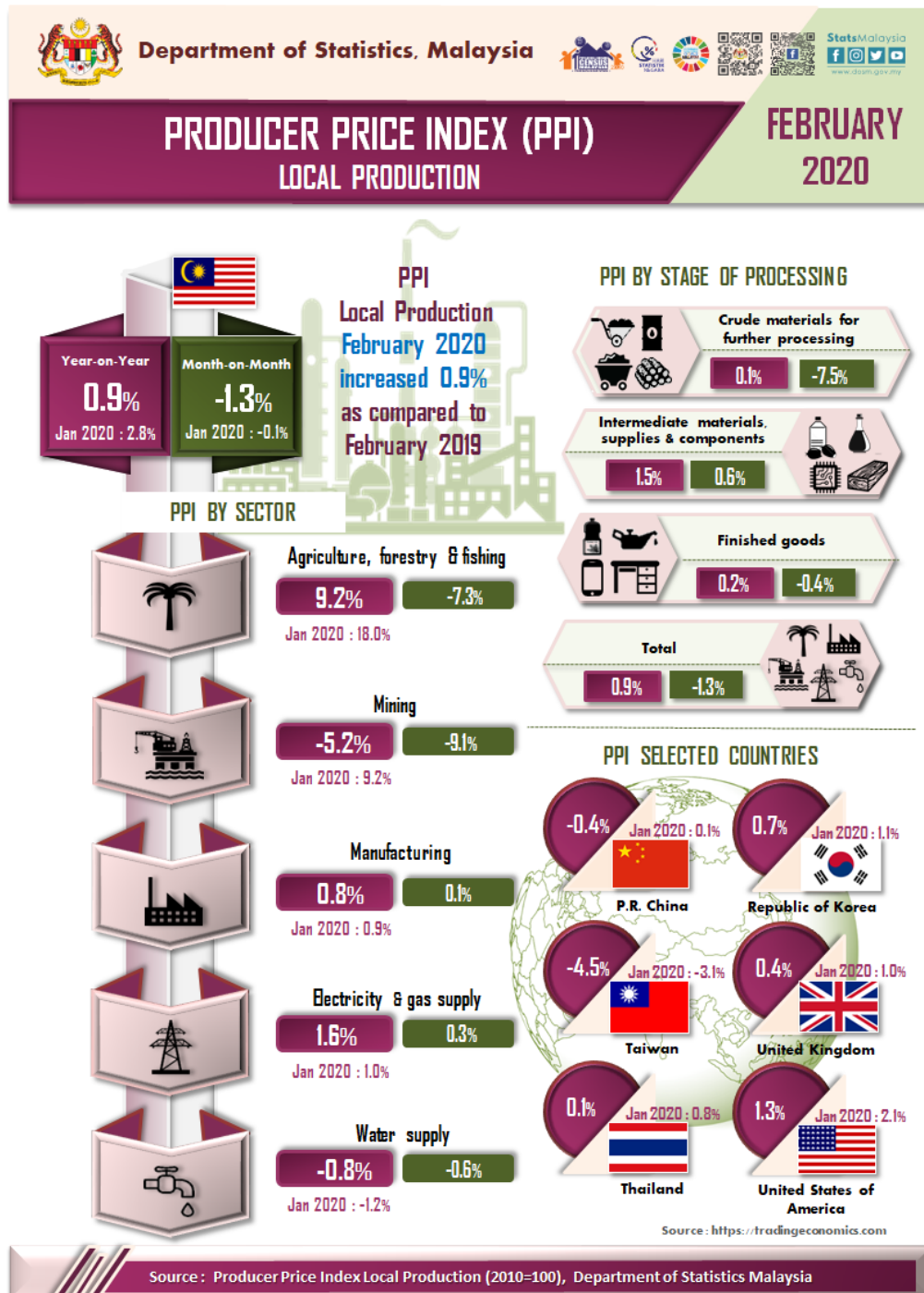




MINISTRY OF ECONOMY  
DEPARTMENT OF STATISTICS MALAYSIA

## PRODUCER PRICE INDEX MALAYSIA FEBRUARY 2020



## PRODUCER PRICE INDEX (2010=100) BY SECTOR (MSIC 2008)

The Producer Price Index (PPI) local production grew 0.9 per cent in February 2020 to 105.9 as against 105.0 in the same month of the previous year. The increase in the overall index was contributed by the index of Agriculture, forestry & fishing (9.2%), Electricity & gas supply (1.6%) and Manufacturing (0.8%). Meanwhile, the index of Mining & Water supply recorded a decline of 5.2 per cent and 0.8 per cent respectively.

On a monthly basis, the PPI local production decreased 1.3 per cent in February 2020. The decrease was attributed by the decline in the index of Mining (-9.1%), Agriculture, forestry & fishing (-7.3%) and Water supply (-0.6%). However, the index of Electricity & gas supply and Manufacturing rose 0.3 per cent and 0.1 per cent respectively. [Table 1]

**Table 1 : Producer Price Index (2010=100) Local Production by Sector (MSIC 2008), Malaysia**

Sector	Code	Weights	Index	Percentage Change					
			Feb 2020	Year-on-Year		Feb 2020/ Feb 2019	Month-on-Month		
				Dec 2019/ Dec 2018	Jan 2020/ Jan 2019		Dec 2019/ Nov 2019	Jan 2020/ Dec 2019	Feb 2020/ Jan 2020
<b>Total</b>		<b>100.000</b>	<b>105.9</b>	<b>3.5</b>	<b>2.8</b>	<b>0.9</b>	<b>0.8</b>	<b>-0.1</b>	<b>-1.3</b>
Agriculture, forestry & fishing	A	6.730	103.6	21.9	18.0	9.2	2.6	3.8	-7.3
Mining	B	7.927	94.6	19.3	9.2	-5.2	2.1	-6.8	-9.1
Manufacturing	C	81.571	107.0	0.5	0.9	0.8	0.6	0.4	0.1
Electricity & gas supply	D	3.442	118.2	1.2	1.0	1.6	0.7	0.1	0.3
Water supply	E	0.330	111.0	-2.9	-1.2	-0.8	0.0	0.0	-0.6

## PRODUCER PRICE INDEX BY STAGE OF PROCESSING

As compared with the same month a year ago, the PPI for local production by stage of processing (SOP) for February 2020 increased 0.9 per cent. This is due to the increase in all stage of processing that is Intermediate materials, supplies & components (1.5%), Finished goods (0.2%) and Crude materials for further processing (0.1%).

As compared to the previous month, the PPI local production by SOP in February 2020 dropped 1.3 per cent. The decline was attributed by the negative changes of index for Crude materials for further processing (-7.5%) and Finished goods (-0.4%). Conversely, the index of Intermediate materials, supplies & components increased 0.6 per cent. [Table 2]

**Table 2 : Producer Price Index (2010=100), Local Production by Stage of Processing**

Stage of Processing	Code	Weights	Index	Percentage Change					
			Feb 2020	Year-on-Year		Month-on-Month			
				Dec 2019/ Dec 2018	Jan 2020/ Jan 2019	Feb 2020/ Feb 2019	Dec 2019/ Nov 2019	Jan 2020/ Dec 2019	Feb 2020/ Jan 2020
<b>Total</b>		<b>100.000</b>	<b>105.9</b>	<b>3.5</b>	<b>2.8</b>	<b>0.9</b>	<b>0.8</b>	<b>-0.1</b>	<b>-1.3</b>
Crude materials for further processing	1	16.410	105.4	16.0	10.7	0.1	3.5	-1.0	-7.5
Intermediate materials, supplies and components	2	56.119	108.2	0.4	1.0	1.5	0.0	0.4	0.6
Finished goods	3	27.471	101.4	1.2	0.8	0.2	0.5	-0.3	-0.4

**Released by:**

**DATO' SRI DR. MOHD UZIR MAHIDIN**  
**CHIEF STATISTICIAN MALAYSIA**  
**DEPARTMENT OF STATISTICS, MALAYSIA**

 [DrUzir\\_Mahidin](#)   [Dr\\_Uzir](#)

**30<sup>th</sup> March 2020**

**Contact person:**

Mohd Yusrizal Ab Razak  
 Public Relation Officer  
 Strategic Communication and International Division  
 Department of Statistics, Malaysia  
 Tel : +603-8885 7942  
 Fax : +603-8888 9248  
 Email : yusrizal.razak[at]dosm.gov.my

**Contact person:**

Baharudin Mohamad

Public Relation Officer  
Strategic Communication and International Division  
Department of Statistics Malaysia  
Tel : +603-8090 4681  
Fax : +603-8888 9248  
Email : baharudin[at]dosm.gov.my

**Copyright ©2026 Department of Statistics Malaysia Official Portal. All Rights Reserved.**