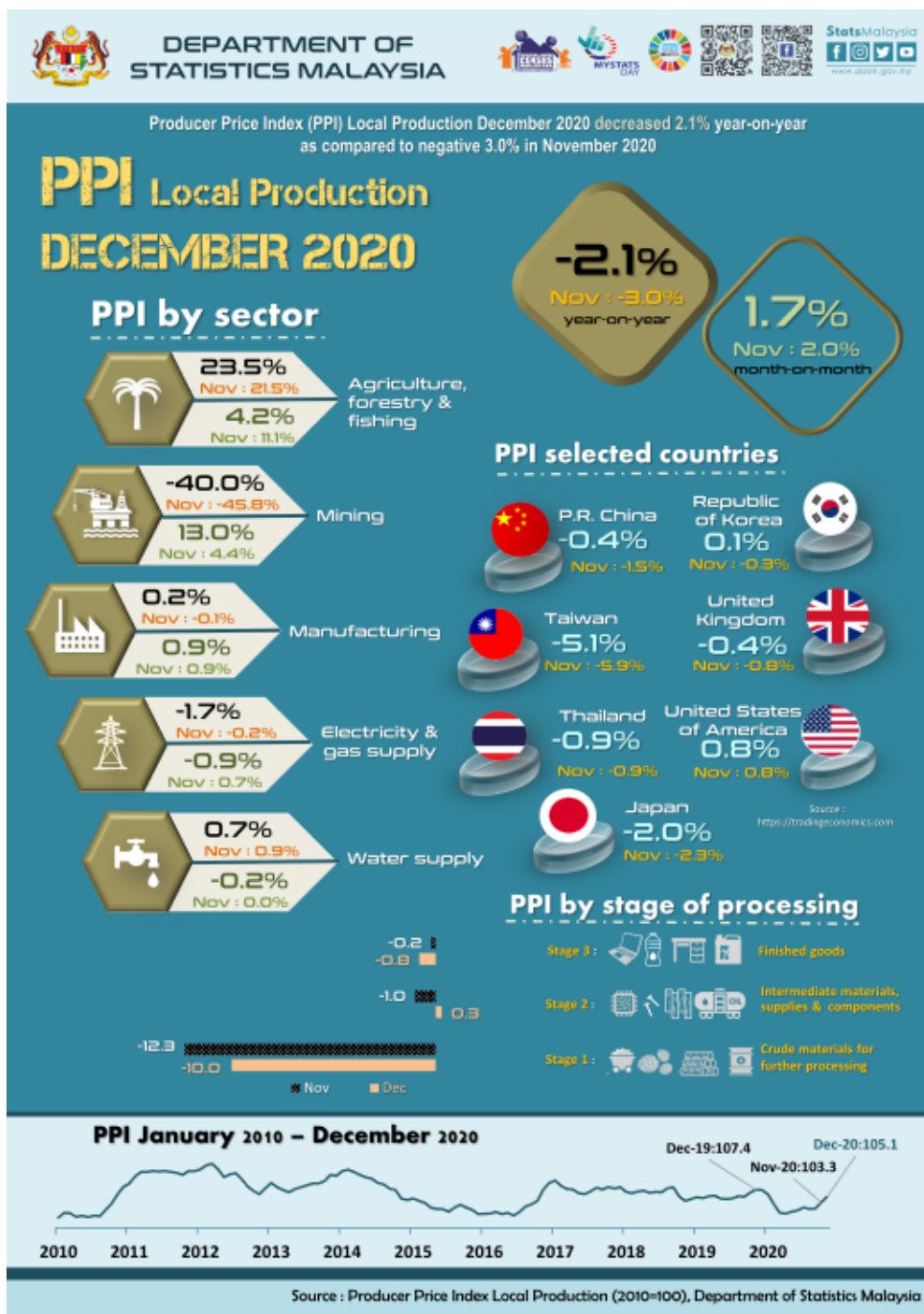




MINISTRY OF ECONOMY  
DEPARTMENT OF STATISTICS MALAYSIA

PRODUCER PRICE INDEX MALAYSIA DECEMBER 2020



## PRODUCER PRICE INDEX (2010=100) BY SECTOR (MSIC 2008)

In December 2020, the Producer Price Index (PPI) local production declined at a slower rate of 2.1 per cent year-on-year as compared to negative 3.0 per cent in November 2020. The continuous double-digit increased in the index of Agriculture, forestry & fishing (23.5%) and the positive change in Manufacturing index (0.2%), reinforced the momentum of the overall index. Index of Water supply also increased 0.7 per cent. However, the Mining and Electricity & gas supply indices still recorded a decrease of 40.0 per cent and -1.7 per cent respectively.

On a monthly basis, the PPI local production rose 1.7 per cent in December 2020. The increase was supported by the index of Mining which recorded a double-digit increase of 13.0 per cent, followed by Agriculture, forestry & fishing 4.2 per cent and Manufacturing 0.9 per cent. Meanwhile, Electricity & gas supply and Water supply declined 0.9 per cent and 0.2 per cent respectively. PPI local production for the period of January to December 2020 decreased 2.7 per cent, equivalent to the changes for the period of January to November 2020.

**Table 1 : Producer Price Index (2010=100) Local Production by Sector (MSIC 2008), Malaysia**

Sector	Code	Weight	Index		Percentage Change				
			Dec 2020	Year-on-Year			Month-on-Month		
				Oct 2020/ Oct 2019	Nov 2020/ Nov 2019	Dec 2020/ Dec 2019	Oct 2020/ Sept 2020	Nov 2020/ Oct 2020	Dec 2020/ Nov 2020
<b>Total</b>		<b>100.000</b>	<b>105.1</b>	<b>-3.6</b>	<b>-3.0</b>	<b>-2.1</b>	<b>0.1</b>	<b>2.0</b>	<b>1.7</b>
Agriculture, forestry & fishing	A	6.730	132.9	21.0	21.5	23.5	1.1	11.1	4.2
Mining	B	7.927	67.0	-43.5	-45.8	-40.0	-3.1	4.4	13.0
Manufacturing	C	81.571	106.7	-1.1	-0.1	0.2	0.3	0.9	0.9
Electricity & gas supply	D	3.442	115.7	-1.2	-0.2	-1.7	-0.4	0.7	-0.9
Water supply	E	0.330	112.5	1.0	0.9	0.7	0.0	0.0	-0.2

## PPI LOCAL PRODUCTION FOR FOURTH QUARTER 2020

PPI local production for the fourth quarter 2020 declined 2.9 per cent to 103.2 as compared to 106.3 in the same quarter of the previous year. The decline was due to the decrease in the index of Mining (-43.1%), Electricity & gas supply (-1.0%) and Manufacturing (-0.4%). Meanwhile, the index of Agriculture, forestry & fishing and Water supply recorded an increase of 22.0 per cent and 0.8 per cent respectively. On a quarterly basis, the PPI local production increased 2.0 per cent as compared to 1.2 per cent in the third quarter 2020.

**Table 2 : Average Index and Percentage Change of Quarterly PPI Local Production by Sector**

Sector	Weight	Index			% Change	
		Q4 2019	Q3 2020	Q4 2020	Q4 2020/ Q4 2019	Q4 2020/ Q3 2020
<b>Total</b>	<b>100.000</b>	<b>106.3</b>	<b>101.2</b>	<b>103.2</b>	<b>-2.9</b>	<b>2.0</b>
Agriculture, forestry & fishing	6.730	102.5	109.5	125.1	22.0	14.2
Mining	7.927	107.2	61.9	61.0	-43.1	-1.5
Manufacturing	81.571	106.2	104.6	105.8	-0.4	1.1
Electricity & gas supply	3.442	117.3	116.4	116.1	-1.0	-0.3
Water supply	0.330	111.7	111.9	112.6	0.8	0.6

The PPI local production for the year 2020 registered a decrease of 2.7 per cent as compared to negative 1.4 per cent in 2019.

## PRODUCER PRICE INDEX BY STAGE OF PROCESSING

As compared to the same month a year ago, the index for Crude materials for further processing and Finished goods dipped by 10.0 per cent and 0.8 per cent respectively. However, Intermediate materials, supplies & components rose 0.3 per cent.

On a monthly basis, Crude materials for further processing increased 6.3 per cent in December 2020 as compared to 7.6 per cent recorded in November 2020. The Intermediate materials, supplies & components index also showed an increase of 1.3 per cent. Meanwhile, Finished goods fell 0.1 per cent.

**Table 3 : Producer Price Index (2010=100), Local Production by Stage of Processing**

Stage of Processing	Code	Weight	Index						
			Dec 2020	Year-on-Year			Percentage Change		
				Oct 2020/ Oct 2019	Nov 2020/ Nov 2019	Dec 2020/ Dec 2019	Oct 2020/ Sept 2020	Nov 2020/ Oct 2020	Dec 2020/ Nov 2020
<b>Total</b>		<b>100.000</b>	<b>105.1</b>	<b>-3.6</b>	<b>-3.0</b>	<b>-2.1</b>	<b>0.1</b>	<b>2.0</b>	<b>1.7</b>
Crude materials for further processing	1	16.410	103.6	-13.2	-12.3	-10.0	-1.7	7.6	6.3
Intermediate materials, supplies and components	2	56.119	107.5	-1.6	-1.0	0.3	0.8	1.0	1.3
Finished goods	3	27.471	101.3	-0.8	-0.2	-0.8	0.0	0.4	-0.1

The full publication of the Producer Price Index Malaysia, December 2020 can be downloaded from [eStatistik](#) portal.

### Released by:

**DATO' SRI DR. MOHD UZIR MAHIDIN**  
**CHIEF STATISTICIAN MALAYSIA**  
**DEPARTMENT OF STATISTICS, MALAYSIA**

 [DrUzir\\_Mahidin](#)  [Dr\\_Uzir](#) 

#myHariBulan# #myBulan# #myTahun#

### Contact person:

Mohd Yusrizal Ab Razak  
 Public Relation Officer  
 Strategic Communication and International Division  
 Department of Statistics, Malaysia  
 Tel : +603-8885 7942  
 Fax : +603-8888 9248  
 E-mail : yusrizal.razak[at]dosm.gov.my

### Contact person:

Baharudin Mohamad

Public Relation Officer  
Strategic Communication and International Division  
Department of Statistics Malaysia  
Tel : +603-8090 4681  
Fax : +603-8888 9248  
Email : baharudin[at]dosm.gov.my

**Copyright ©2026 Department of Statistics Malaysia Official Portal. All Rights Reserved.**