

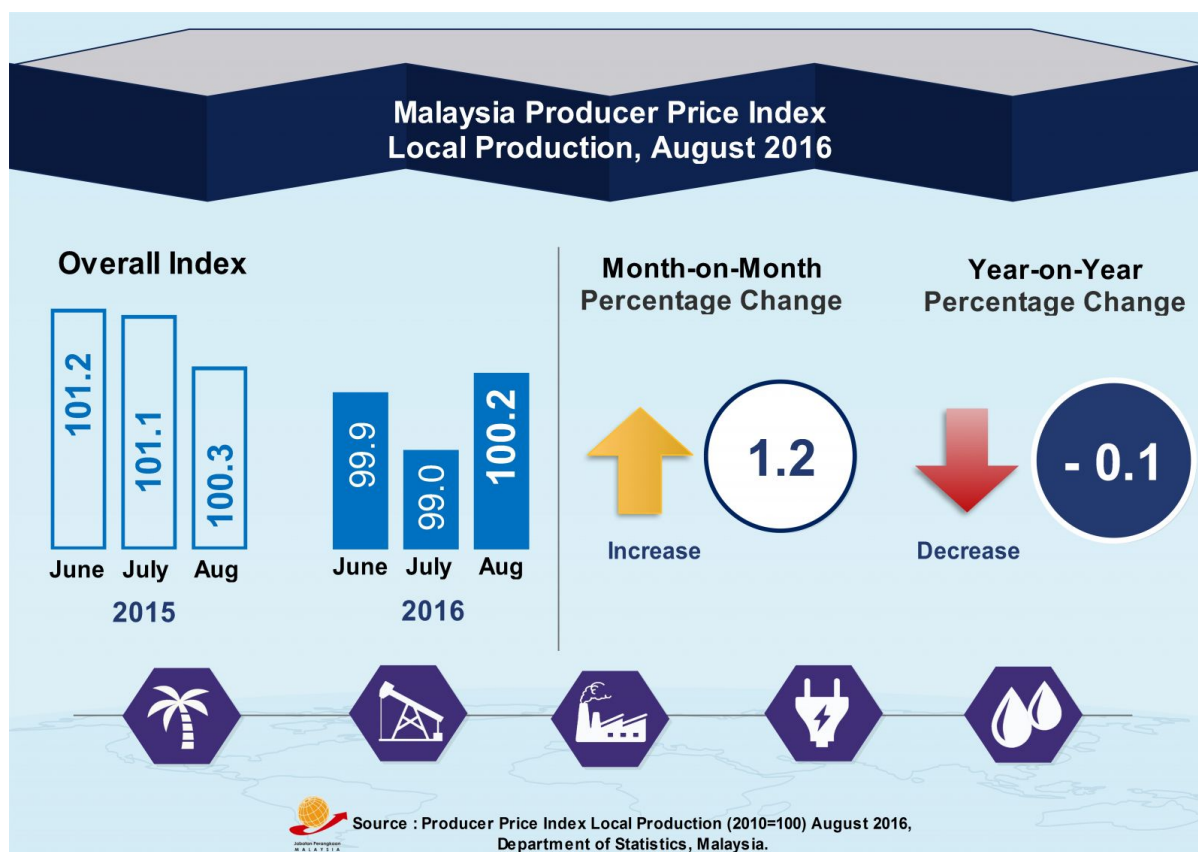


MINISTRY OF ECONOMY
DEPARTMENT OF STATISTICS MALAYSIA

PRODUCER PRICE INDEX MALAYSIA AUGUST 2016

Local Production

The Producer Price Index (PPI) for local production measures the average change in the prices of commodities charged by domestic producers of an industry in a reference month compared with the base year.



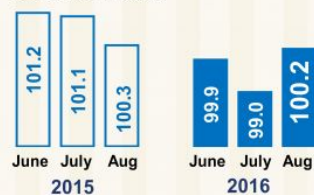
Producer Price Index (2010=100) By Sector (MSIC 2008)

Year-on-year comparison showed that the PPI for local production fell 0.1 per cent in August 2016. The highest drop was recorded by Mining index (-6.7%), followed by Manufacturing (-1.6%). Meanwhile, the index for Agriculture, forestry & fishing, Water supply and Electricity & gas showed an increase of 23.3 per cent, 1.9 per cent and 1.3 per cent respectively. [Table I]

The PPI for local production inclined by 1.2 per cent in August 2016 as compared to July 2016. This was due to increases in all sectors namely, Mining (+7.8%), Agriculture, forestry & fishing (+5.8%), Electricity & gas (+0.4%), Water supply (+0.4%) and Manufacturing (+0.3%).

Producer Price Index & Percentage Change, August 2016

Overall Index



Month-on-Month Percentage Change



Year-on-Year Percentage Change

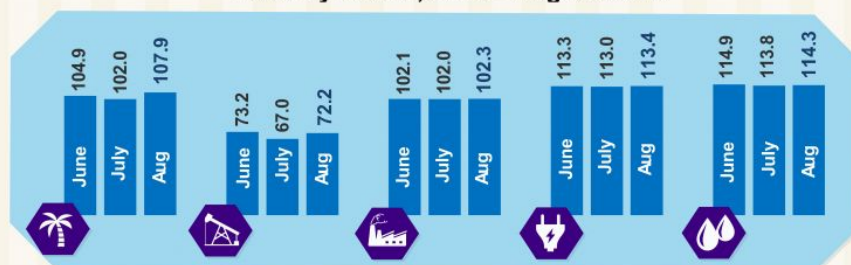


Percentage Change by Sector



Note: ⁽¹⁾ Price used in constructing the index refer to net transaction prices by producers receive for sale of their output

Index by Sector, June - August 2016

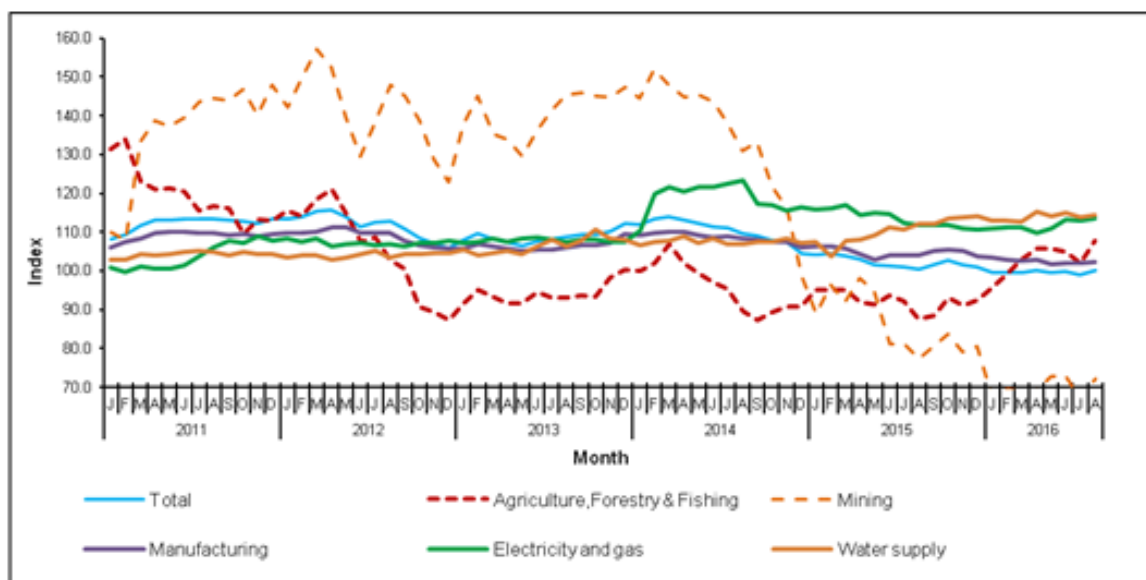


Source : Producer Price Index Local Production (2010=100) August 2016,
Department of Statistics, Malaysia

Table I : Producer Price Index (2010=100) Local Production By Sector (MSIC 2008), Malaysia

Sector	Code	Weight	Index	Percentage Change Month-on-Month			Percentage Change Year-on-Year		
			August 2016	June 2016 / May 2016	July 2016 / June 2016	August 2016 / July 2016	June 2016/ June 2015	July 2016 / July 2015	August 2016 / August 2015
Total		100.00	100.2	0.4	-0.9	1.2	-1.3	-2.1	-0.1
Agriculture, Forestry & Fishing	A	8.15	107.9	-0.9	-2.8	5.8	12.0	10.7	23.3
Mining	B	9.67	72.2	0.5	-8.5	7.8	-9.6	-17.5	-6.7
Manufacturing	C	78.79	102.3	0.4	-0.1	0.3	-1.7	-2.0	-1.6
Electricity & gas	D	3.05	113.4	2.2	-0.3	0.4	-1.1	0.6	1.3
Water supply	E	0.34	114.3	0.6	-1.0	0.4	3.4	2.9	1.9

Chart I : Producer Price Index (2010=100) Local Production By Sector, 2011-2016



Producer Price Index By Stage of Processing

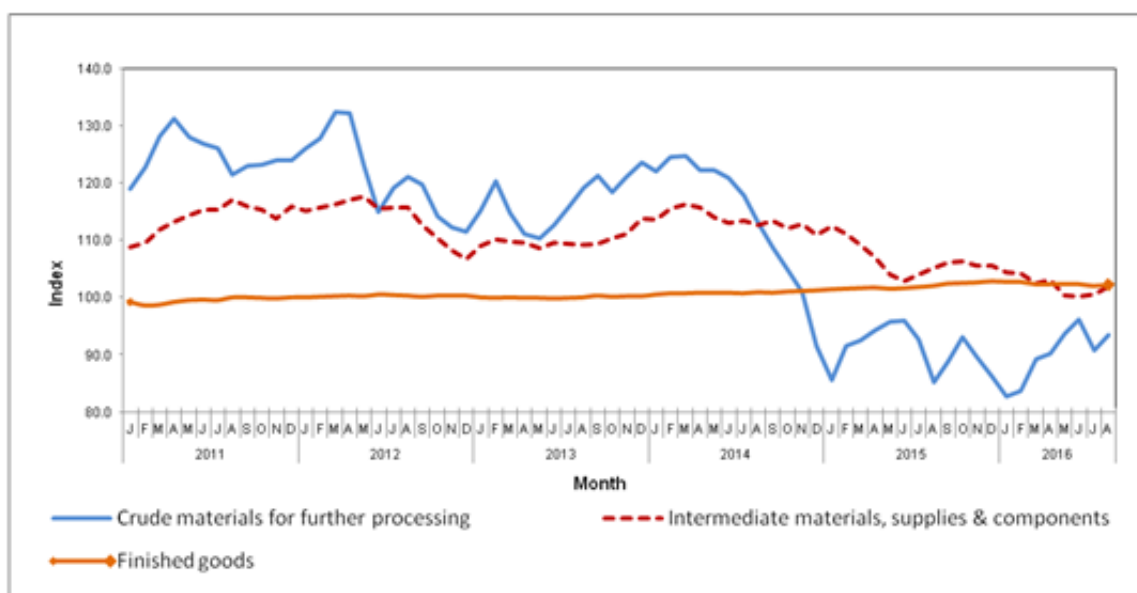
The PPI for local production by stage of processing (SOP) inclined by 1.2 per cent in August 2016 compared to the previous month. This inclination was due to an increase in Crude materials for further processing (+3.0%), Intermediate materials, supplies and components (+1.3%) and Finished goods (+0.2%). [Table II]

As compared with the same month a year ago, the PPI for local production by SOP for August 2016 dropped by 0.1 per cent. This was due to decreases in index for Intermediate materials, supplies and components (-3.2%). However, index for Crude materials for further processing and Finished goods increased by 9.7 per cent and 0.2 per cent respectively.

Table II : Producer Price Index (2010=100), Local Production By Stage of Processing

Stage of Processing	Code	Weight	Index	Percentage Change Month-on-Month			Percentage Change Year-on-Year		
			August 2016	June 2016/ May 2016	July 2016/ June 2016	August 2016/ July 2016	June 2016/ June 2015	July 2016/ July 2015	August 2016/ August 2015
Total		100.00	100.2	0.4	-0.9	1.2	-1.3	-2.1	-0.1
Crude materials for further processing	1	20.32	93.5	2.7	-5.6	3.0	0.2	-2.0	9.7
Intermediate materials, supplies and components	2	53.56	101.8	-0.3	0.4	1.3	-2.7	-3.4	-3.2
Finished goods	3	26.12	102.3	0.0	-0.3	0.2	0.7	0.2	0.2

Chart II : Producer Price Index (2010=100), Local Production By Stage of Processing, 2011-2016



RELEASED BY:

**THE OFFICE OF CHIEF STATISTICIAN MALAYSIA
DEPARTMENT OF STATISTICS MALAYSIA**

30 SEPTEMBER 2016

Contact person:

Ho Mei Kei
Public Relation Officer
Corporate and User Services Division
Department of Statistics, Malaysia
Tel : +603-8885 7942
Fax : +603-8888 9248
Email : mkho[at]stats.gov.my

Contact person:

Baharudin Mohamad
Public Relation Officer
Strategic Communication and International Division
Department of Statistics Malaysia
Tel : +603-8090 4681
Fax : +603-8888 9248
Email : baharudin[at]dosm.gov.my

Copyright ©2026 Department of Statistics Malaysia Official Portal. All Rights Reserved.