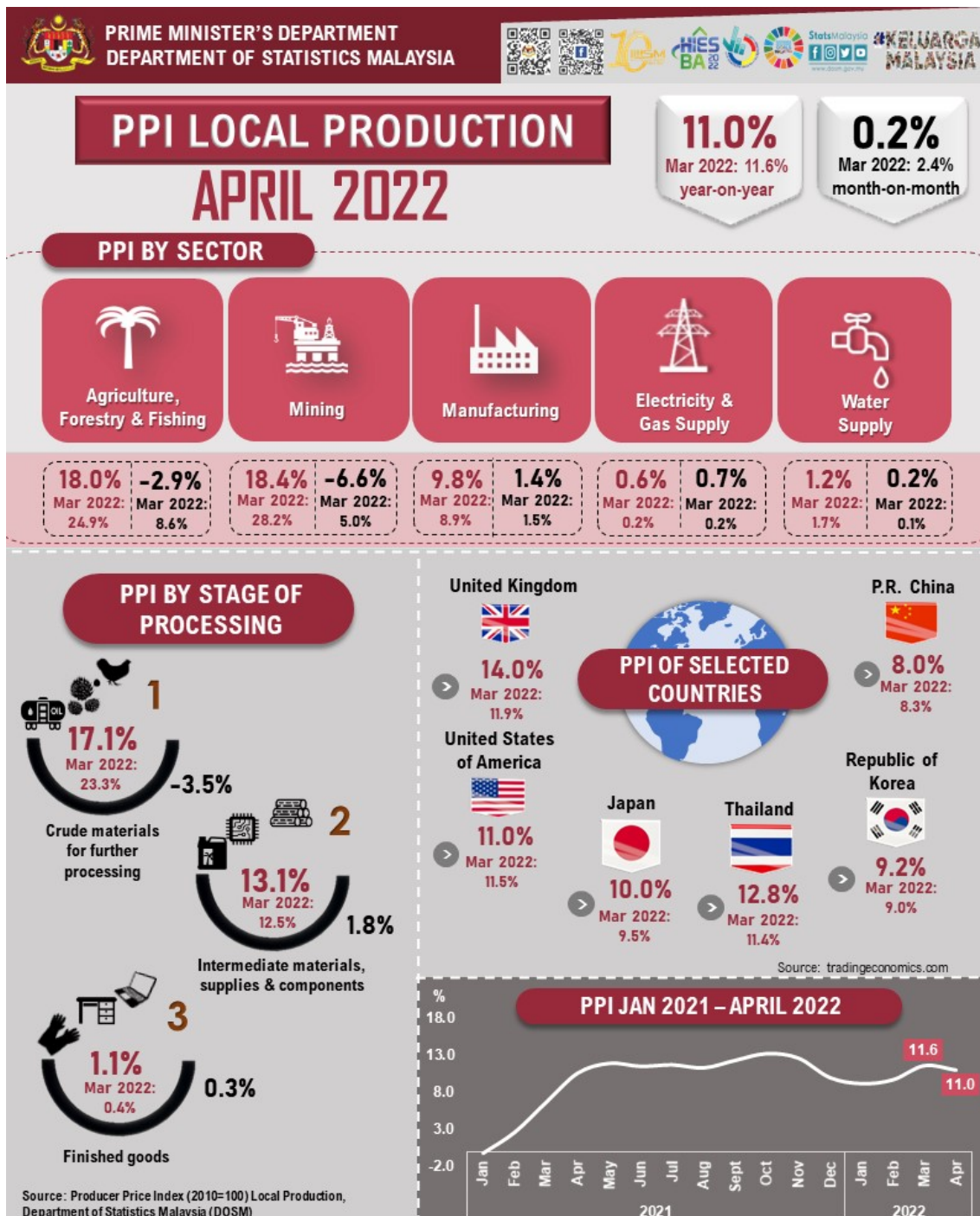




MINISTRY OF ECONOMY
DEPARTMENT OF STATISTICS MALAYSIA

PRODUCER PRICE INDEX MALAYSIA APRIL 2022



PRODUCER PRICE INDEX (2010=100) BY SECTOR (MSIC 2008)

The increase in Malaysia's Producer Price Index which measures the prices of goods at factory gate remained double digit at a rate of 11.0 per cent in April 2022 as compared to 11.6 per cent recorded in March 2022. The increase was attributed by Mining index that increased 18.4 per cent as compared to 28.2 per cent recorded in March 2022. Index of Agriculture, forestry & fishing registered an increase of 18.0 per cent (March 2022: 24.9%) mainly led by an increase in indices of Growing of perennial crops (23.8%) and Fishing (7.0%). Similarly, Manufacturing index increased 9.8 per cent as compared to 8.9 per cent posted in March 2022, supported by an increase in indices of subsectors namely Manufacture of refined petroleum products (23.4%), Manufacture of vegetable & animal oils & fats (23.4%) and Manufacture of basic chemicals, fertilizers & nitrogen compounds, plastics & synthetic rubber in primary forms (13.9%). In addition, the indices of Water supply and Electricity & gas supply increased 1.2 per cent and 0.6 per cent respectively.

In terms of month-on-month comparison, the PPI local production increased moderately at 0.2 per cent as compared to 2.4 per cent recorded in the previous month. The moderate rise was supported by Manufacturing index that increased 1.4 per cent, underpinned by an increase in indices of subsectors namely Manufacture of vegetable & animal oils & fats (3.6%), Manufacture of refined petroleum products (2.4%) and Manufacture of electronic components & boards (1.0%). However, the increase in the PPI local production during April 2022 was also offset by the decline in Agriculture, forestry & fishing index that recorded negative 2.9 per cent (March 2022: 8.6%) due to a decline in the index of Oil palm fresh fruit bunches (-4.3%). In addition, Mining index also registered a 6.6 per cent decline in April 2022 (March 2022: 5.0%), attributed by the decline in Crude oil index (-8.6%). Moreover, indices of Electricity & gas supply and Water supply each edged up 0.7 per cent and 0.2 per cent.

Table 1 : Producer Price Index (PPI) Local Production by Sector, Malaysia

Sector	Weight	Index	Percentage Change (%)					
			Year-on-Year			Month-on-Month		
		Apr 2022	Apr 2021	Mar 2022	Apr 2022	Apr 2021	Mar 2022	Apr 2022
Total	100.00	122.6	10.6	11.6	11.0	0.8	2.4	0.2
Agriculture, forestry & fishing	6.73	173.6	49.8	24.9	18.0	2.8	8.6	-2.9
Mining	7.93	101.8	92.4	28.2	18.4	1.2	5.0	-6.6
Manufacturing	81.57	120.6	3.5	8.9	9.8	0.5	1.5	1.4
Electricity & gas supply	3.44	117.8	-0.8	0.2	0.6	0.3	0.2	0.7
Water supply	0.33	113.8	1.2	1.7	1.2	0.6	0.1	0.2

PRODUCER PRICE INDEX BY STAGE OF PROCESSING

The index of Crude materials for further processing increased 17.1 per cent in April 2022 in comparison to 23.3 per cent recorded in March 2022. The increase was contributed by indices of Non-food materials (19.9%) and Foodstuffs & feedstuffs (2.0%). Similarly, index of Intermediate materials, supplies & components continued to post higher increase of 13.1 per cent in April 2022 (March 2022: 12.5%) driven by an increase in indices of Processed fuel & lubricants (19.5%), Materials & components for manufacturing (14.3%) and Materials & components for construction (4.5%). Finished goods index also registered an increase in April 2022 with 1.1 per cent (March 2022: 0.4%).

For a monthly comparison, index of Crude materials for further processing decreased 3.5 per cent as against a 6.7 per cent increase in March 2022. Index of Intermediate materials, supplies & components edged up 1.8 per cent, while Finished goods index rose moderately 0.3 per cent.

Table 2: Producer Price Index (PPI) Local Production by Stage of Processing, Malaysia

Stage of Processing	Weight	Index	Percentage Change (%)					
			Year-on-Year			Month-on-Month		
		Apr 2022	Apr 2021	Mar 2022	Apr 2022	Apr 2021	Mar 2022	Apr 2022
Total	100.00	122.6	10.6	11.6	11.0	0.8	2.4	0.2
Crude materials for further processing	16.41	140.5	55.8	23.3	17.1	1.6	6.7	-3.5
Intermediate materials, supplies and components	56.12	126.6	4.8	12.5	13.1	1.2	1.7	1.8
Finished goods	27.47	102.2	-0.7	0.4	1.1	-0.4	0.3	0.3

The full publication of the Producer Price Index Malaysia, April 2022 can be downloaded from [eStatistik](#) portal.

Released by:

THE OFFICE OF CHIEF STATISTICIAN MALAYSIA

DEPARTMENT OF STATISTICS, MALAYSIA

31st MAY 2022

Contact person:

Mohd Yusrizal Ab Razak
Public Relation Officer
Strategic Communication and International Division
Department of Statistics, Malaysia
Tel : +603-8885 7942
Fax : +603-8888 9248
E-mail : yusrizal.razak[at]dosm.gov.my

Contact person:

Baharudin Mohamad
Public Relation Officer
Strategic Communication and International Division
Department of Statistics Malaysia
Tel : +603-8090 4681
Fax : +603-8888 9248
Email : baharudin[at]dosm.gov.my

Copyright ©2025 Department of Statistics Malaysia Official Portal. All Rights Reserved.